

**CHICAGO FAUCETS**

a Geberit company

**FOR TECHNICAL ASSISTANCE**  
1-800-TEC-TRUE (1-800-832-8783)

2100 South Clearwater Drive  
Des Plaines, IL 60018  
Phone: 847-803-5000  
Fax: 847-803-5454  
www.chicagofaucets.com

**REPAIR PARTS**

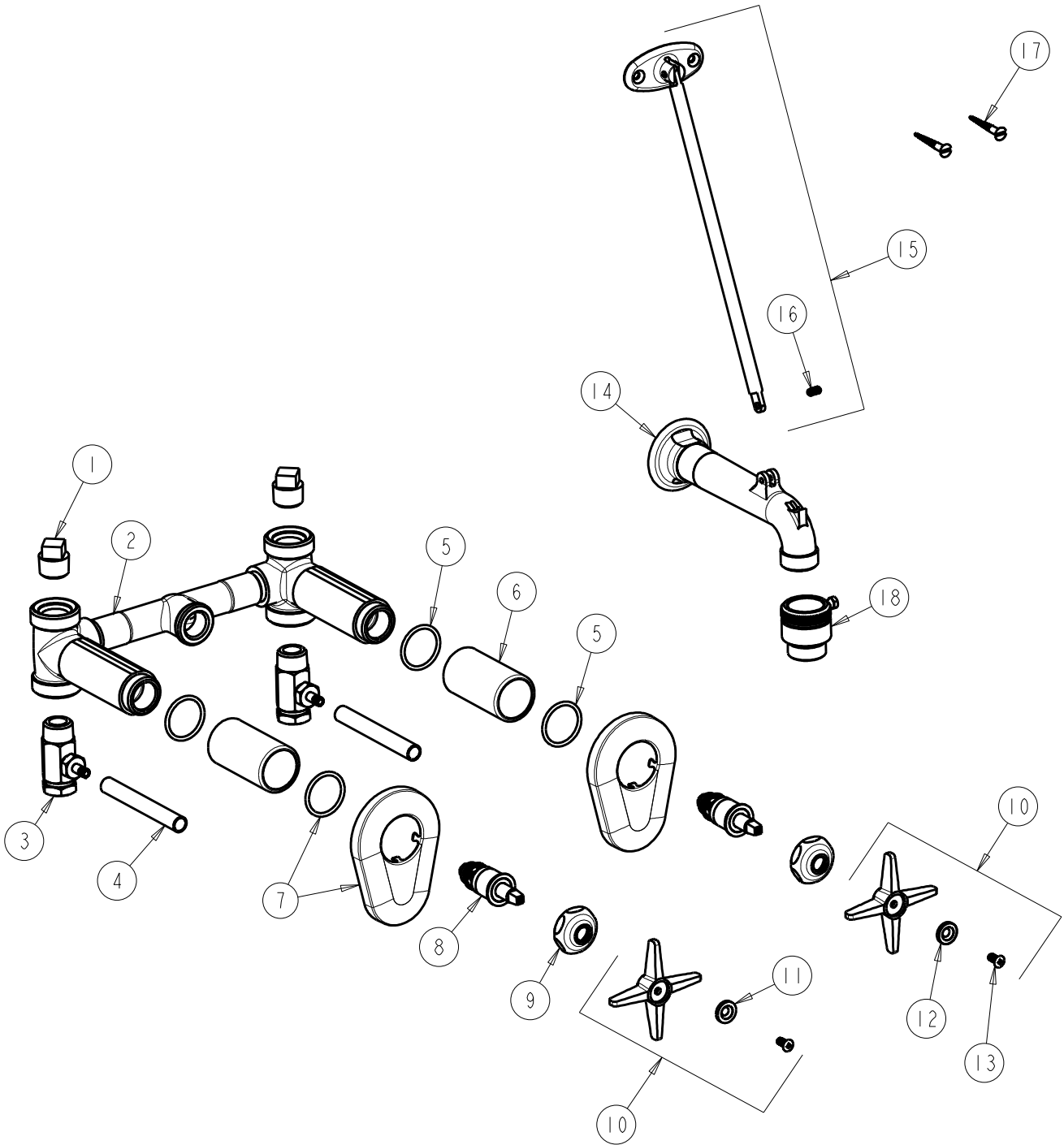
BY: SID DATE: 11-16-11  
CHK: *[Signature]* REV:

FITTING NO.

**782-ISE27CP**

SUBMITTED MODEL NO.

ITEM NO.



ITEM	PART NO.	DESCRIPTION	ITEM	PART NO.	DESCRIPTION
1	234-032JKRCF	1/2 NPT PLUG	10	633-PRJKCP	4-ARM HANDLE ASSEMBLY
2	—	VALVE BODY (NOT SOLD SEPARATELY)	11	633-023JKNF	INDEX BUTTON (RED)
3	769-013JKRBF	INTEGRAL STOP VALVE	12	633-123JKNF	INDEX BUTTON (BLUE)
4	769-005JKNF	INTEGRAL STOP SLEEVE	13	420-010JKRCF	SCREW, 10-32 UNC PH 1/2
5	5235-107JKNF	O-RING	14	782-001KJKCP	CAST SPOUT ASSEMBLY
6	5235-106JKCP	SLEEVE	15	897-013JKCP	BRACE ROD ASSEMBLY
7	769-201JKCP	WALL FLANGE & O-RING	16	665-116JKNF	SET SCREW
8	217-XTLHJKNF	CARTRIDGE, SLO-COMPRESSION (LH)	17	173-006JKCP	FLAT HEAD WOOD SCREW
9	1-214JKCP	CAP	18	E27JKCP	VACUUM BREAKER OUTLET