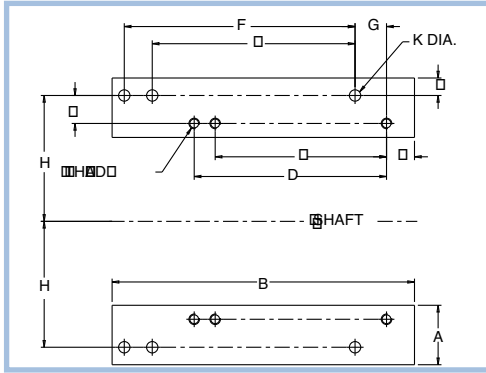




# Accessories & Kits

MARS SERIES **588**

## Transition Bases

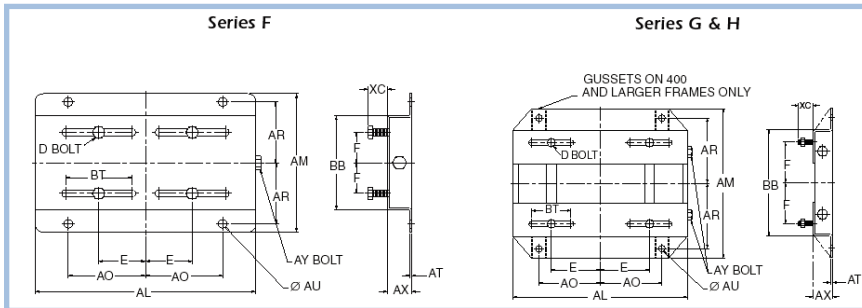


**Application:** Convert "T" frame ratings to "U" frame based dimensions and shaft heights. Shaft dimensions may vary from actual "U" frame specifications.

Dimensions = Inches

| CAT. NO. | KIT #    | CONVERTS |        | A       | B      | HGT | C      | D      | E      | F      | G     | H     | J     | K     | L      | M   | N (THREAD) | APP. WGT. | LIST PRICE |
|----------|----------|----------|--------|---------|--------|-----|--------|--------|--------|--------|-------|-------|-------|-------|--------|-----|------------|-----------|------------|
|          |          | FROM     | TO     |         |        |     |        |        |        |        |       |       |       |       |        |     |            |           |            |
| 1814T    | KIT 180U | 143/5T   | 182/4  | 2 1/4   | 7 1/2  | 1   | 4      | 5      | 4 1/2  | 5 1/2  | 1/2   | 3 3/4 | 1     | 7/16  | 1/2    | 1   | 5/16-18    | 2         | \$131      |
| 2118T    | KIT 210U | 182/4T   | 213/5  | 1 3/4   | 9 1/2  | 3/4 | 4 1/2  | 5 1/2  | 5 1/2  | 7      | 1     | 4 1/4 | 1     | 7/16  | 7/16   | 1/2 | 3/8-16     | 3         | \$166      |
| 25U21T   | KIT 250U | 213/5T   | 254/6U | 2 7/16  | 12 3/4 | 1   | 5 1/2  | 7      | 8 1/4  | 10     | 1 1/8 | 5     | 1     | 9/16  | 5/8    | 3/4 | 3/8-16     | 5         | \$166      |
| 28U25T   | KIT 280U | 254/6T   | 284/6U | 2 3/4   | 14 1/4 | 3/4 | 8 1/4  | 10     | 9 1/2  | 11     | 1 3/8 | 5 1/2 | 1 1/4 | 9/16  | 15/16  | 1/2 | 1/2-13     | 8         | \$166      |
| 32U28T   | KIT 320U | 284/6T   | 324/6U | 3 1/4   | 15 3/4 | 1   | 9 1/2  | 11     | 10 1/2 | 12     | 1 1/2 | 6 1/4 | 1 1/2 | 11/16 | 15/16  | 3/4 | 1/2-13     | 10        | \$196      |
| 36U32T   | KIT 360U | 324/6T   | 364/5U | 3 11/16 | 16 1/2 | 1   | 10 1/2 | 12     | 11 1/4 | 12 1/4 | 1 3/4 | 7     | 1 3/4 | 11/16 | 1 3/16 | 3/4 | 5/8-11     | 13        | \$232      |
| 40U36T   | KIT 400U | 364/5T   | 404/5U | 4 1/4   | 18 5/8 | 1   | 11 1/4 | 12 1/4 | 12 1/4 | 13 3/4 | 2     | 8     | 2     | 13/16 | 1 1/4  | 1   | 5/8-11     | 22        | \$297      |
| 44U40T   | KIT 440U | 404/5T   | 444/5U | 4 1/4   | 21 5/8 | 1   | 12 1/4 | 13 3/4 | 14 1/2 | 16 1/2 | 2 1/4 | 9     | 2     | 13/16 | 1 1/4  | 1   | 3/4-10     | 24        | \$297      |

## Adjustable Motor Bases (Slide Bases)



**Application:** Used to adjust tension during motor installation. Made with heavy duty steel construction with single screw adjustment for 143T-215T Frame and double screw adjustment for 254T Frame and larger.

Dimensions = Inches

| SERIES | FRAME | CAT. NO. | KIT NO.   | AL     | AM     | AX    | BB     | E     | F      | AO    | AR     | AU  | BT    | AT    | XC      | D BOLT     | AY BOLT | WGHT. LBS. | LIST PRICE |
|--------|-------|----------|-----------|--------|--------|-------|--------|-------|--------|-------|--------|-----|-------|-------|---------|------------|---------|------------|------------|
| F      | 143   | 143A     | KIT 143SB | 10 1/2 | 7 1/2  | 1 1/8 | 5 1/2  | 2 3/4 | 2      | 3 3/4 | 3 3/8  | 3/8 | 3     | 0.119 | 13/16   | 5/16 x1    | 3/8x4   | 5          | \$80       |
| F      | 145   | 145A     | KIT 145SB | 10 1/2 | 8 1/2  | 1 1/8 | 6 1/2  | 2 3/4 | 2 1/2  | 3 3/4 | 3 7/8  | 3/8 | 3     | 0.119 | 13/16   | 5/16x1     | 3/8x4   | 6          | \$89       |
| F      | 182   | 182A     | KIT 182SB | 12 3/4 | 9 1/2  | 1 1/2 | 6 1/2  | 3 3/4 | 2 1/4  | 4 1/2 | 4 1/4  | 1/2 | 3     | 0.134 | 1 1/2   | 3/8x1 3/4  | 1/2x6   | 9          | \$89       |
| F      | 184   | 184A     | KIT 184SB | 12 3/4 | 10 1/2 | 1 1/2 | 7 1/2  | 3 3/4 | 2 3/4  | 4 1/2 | 4 3/4  | 1/2 | 3     | 0.134 | 1 1/2   | 3/8s 1 3/4 | 1/2x6   | 9          | \$107      |
| F      | 213   | 213A     | KIT 213SB | 15     | 11     | 1 3/4 | 7 1/2  | 4 1/4 | 2 3/4  | 5 1/4 | 4 3/4  | 1/2 | 3 1/2 | 0.164 | 1 1/2   | 3/8x1 3/4  | 1/2x6   | 13         | \$107      |
| F      | 215   | 215A     | KIT 215SB | 15     | 12 1/2 | 1 3/4 | 9      | 4 1/4 | 3 1/2  | 5 1/4 | 5 1/2  | 1/2 | 3 1/2 | 0.164 | 1 1/2   | 3/8x1 3/4  | 1/2x6   | 15         | \$172      |
| G      | 254   | 254B2    | KIT 254SB | 17 3/4 | 15 1/8 | 2     | 10 3/4 | 5     | 4 1/8  | 6 1/4 | 6 5/8  | 5/8 | 4     | 3/16  | 1 7/16  | 1/2x1 3/4  | 5/8x6   | 17         | \$172      |
| G      | 256   | 256B2    | KIT 256SB | 17 3/4 | 16 7/8 | 2     | 12 1/2 | 5     | 5      | 6 1/4 | 7 1/2  | 5/8 | 4     | 3/16  | 1 7/16  | 1/2x1 3/4  | 5/8x6   | 18         | \$204      |
| G      | 284   | 284B2    | KIT 284SB | 19 3/4 | 16 7/8 | 2     | 12 1/2 | 5 1/2 | 4 3/4  | 7     | 7 1/2  | 5/8 | 4 1/2 | 3/16  | 1 11/16 | 1/2x2      | 5/8x6   | 21         | \$204      |
| G      | 286   | 286B2    | KIT 286SB | 19 3/4 | 18 3/8 | 2     | 14     | 5 1/2 | 5 1/2  | 7     | 8 1/4  | 5/8 | 4 1/2 | 3/16  | 1 11/16 | 1/2x2      | 5/8x6   | 22         | \$337      |
| G      | 324   | 324B2    | KIT 324SB | 22 3/4 | 19 1/4 | 2 1/2 | 14     | 6 1/4 | 5 1/4  | 8     | 8 1/2  | 3/4 | 5 1/4 | 3/16  | 2 3/16  | 5/8x2 1/2  | 3/4x9   | 31         | \$337      |
| G      | 326   | 326B2    | KIT 326SB | 22 3/4 | 20 3/4 | 2 1/2 | 15 1/2 | 6 1/4 | 6      | 8     | 9 1/4  | 3/4 | 5 1/4 | 3/16  | 2 3/16  | 5/8x2 1/2  | 3/4x9   | 32         | \$440      |
| G      | 364   | 364B2    | KIT 364SB | 25 1/2 | 20 1/2 | 2 1/2 | 15 1/2 | 7     | 5 5/8  | 9     | 9 1/8  | 3/4 | 6     | 1/4   | 2 1/16  | 5/8x2 1/2  | 3/4x9   | 44         | \$440      |
| G      | 365   | 365B2    | KIT 365SB | 25 1/2 | 21 1/2 | 2 1/2 | 16 1/2 | 7     | 6 1/8  | 9     | 9 5/8  | 3/4 | 6     | 1/4   | 2 1/16  | 5/8x2 1/2  | 3/4 x9  | 45         | \$643      |
| H      | 404   | 404B2    | KIT 404SB | 28 3/4 | 22 3/8 | 3     | 16 1/2 | 8     | 6 1/8  | 10    | 9 7/8  | 7/8 | 7     | 1/4   | 2 1/2   | 3/4x3      | 3/4x11  | 60         | \$643      |
| H      | 405   | 405B2    | KIT 405SB | 28 3/4 | 23 7/8 | 3     | 18     | 8     | 6 7/8  | 10    | 10 5/8 | 7/8 | 7     | 1/4   | 2 1/2   | 3/4x3      | 3/4x11  | 61         | \$889      |
| H      | 444   | 444B2    | KIT 444SB | 31 1/4 | 24 5/8 | 3     | 19 1/4 | 9     | 7 1/4  | 11    | 11     | 7/8 | 7 1/2 | 1/4   | 2 1/2   | 3/4x3      | 3/4x11  | 67         | \$889      |
| H      | 445   | 445B2    | KIT 445SB | 31 1/4 | 26 5/8 | 3     | 21 1/4 | 9     | 8 1/4  | 11    | 12     | 7/8 | 7 1/2 | 1/4   | 2 1/2   | 3/4x3      | 3/4x11  | 69         | \$1,064    |
| H      | 447   | 447B2    | KIT 447SB | 31 1/4 | 30 1/8 | 3     | 24 3/4 | 9     | 10     | 11    | 13 3/4 | 7/8 | 7 1/2 | 5/16  | 3       | 3/4x3 1/2  | 3/4x11  | 92         | \$1,064    |
| H      | 449   | 449B2    | KIT 449SB | 31 1/4 | 35 1/8 | 3     | 29 3/4 | 9     | 12 1/2 | 11    | 16 1/4 | 7/8 | 7 1/2 | 5/16  | 3       | 3/4x3 1/2  | 3/4x11  | 95         | \$1,064    |

\* Stock model for Marathon and/or MARS. Prices and Specifications are subject to change without notice.

MARATHON