



ENGINEERING EXCELLENCE

Installation Guide

Two Handle Roman Tub Set:

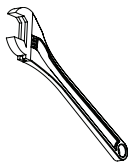
- 4AM610*
- 4MT610*
- 4MT620*
- 4BR600*
- 4BR610*
- 4BR620
- 4BR630*
- 4BR700*
- 4BR710*
- 4BR720
- 4BR730*
- 4BR800*
- 4BR810*
- 4BR820
- 4BR830*
- 4CL610*

This product meets the following standards:

- ASME A112.18.1
- ANSI A117.1
- CUPC/ IAPMO LISTED/ *ADA COMPLIANT

Thank you for purchasing this Pioneer quality product.

Tools Required



Adjustable
Wrench

Teflon Tape

Rags

3/32" Allen
Wrench

Prior to Installation

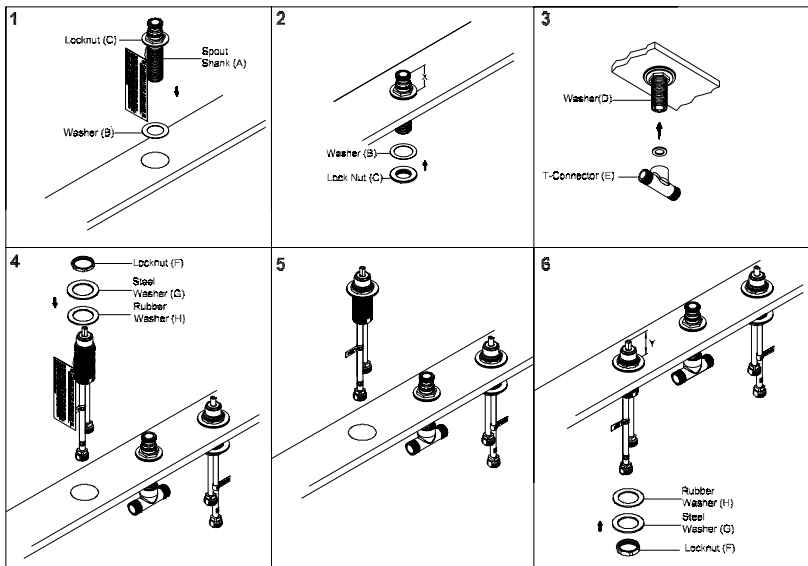
- Observe all local plumbing and building codes before you begin installation.
- Carefully shut off both hot and cold water supplies.
- Plug the tub drain with a soft cloth to prevent intrusion of debris or the loss of any parts.
- Pioneer reserves the right to make changes in the design of faucets without notice.

Valve Installation

1. Thread the locknut (C) and rubber washer (B) from bottom of the spout shank (A).
2. Slide the spout shank (A) from the spout mounting hole. Slide the rubber washer (B) from underneath of the shank. Thread the locknut (C) from underneath of the shank. Adjust the shank height to "X" from finished deck or finished rim.
3. Install the "T" connector (E) to beneath of the shank (A). Do not forget to place the washer (D) between the 'T' connector (E) and the shank (A). Tighten the 'T' connector.
4. Slide the rubber & steel washer (G,H) on the hot side valve from the top. Thread locknut (F) from the top.
5. Place the valve from the mounting hole.
6. Adjust the locknut (F) so that the distance between finished surface and top of the valve is Y. Tighten rubber and steel washer (G,H) and locknut (F) from underneath with the help of 1-7/16" socket or adjustable wrench. Install Cold side valve as the same way.

Series	'X'	'Y'
4BR7X0	1-11/16"	1-3/4"
4BR6X0	1-11/16"	1-3/4"
4BR8X0	1-11/16"	1-3/4"
4AM610	1-1/2"	1-3/4"
4MT6X0	1-5/16"	1-3/4"
4CL610	1-1/2"	1-3/4"

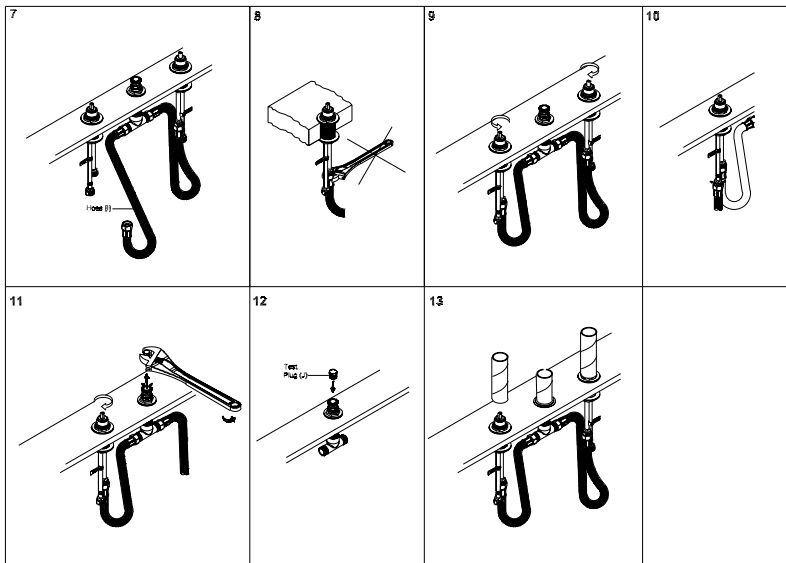
Valve Installation



Valve Installation

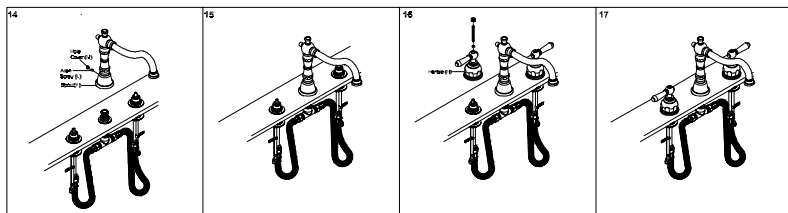
7. Carefully install the hose (I) to the valve outlets. The other end connect it to 'T' connector (E).
8. Do not overtighten the hose with adjustable wrench as it may damage the valve assembly.
9. Ensure that hot and cold side stems are turning in correct direction. Connect the valve assembly inlets to water supply tubes (left is hot water supply and right is cold water supply). Do not overtighten the hose with adjustable wrench as it may damage the valve assembly.
10. Turn on the hot and cold water supply. Check for any leaks at all the connections.
11. Remove the test plug. Turn on the both valves make sure there is appropriate amount of water coming from the spout shank (A).
12. Turn off the valves. Reinstall the test plug.
13. Install the mud guards.

Valve Installation



Trim Installation

14. After installed the finished deck , remove the mud guards. Ensure the supplied o-ring is placed underneath of the spout (K)
15. Install the spout (K) on the spout shank (A) and secure it with the help of allen screw (L). Place the hole cover (M). Clean the mounting surface if necessary.
16. Install the cold side and hot side handle (N) by tightening screw with the help of philips head screwdriver. Place the cap on the handle (N).
17. Ensure the handle works properly.



For more care information or trouble shooting inquiries about your Pioneer Product, please see the contact information on the back page.



ENGINEERING EXCELLENCE

3325 S. Garfield Ave. | Commerce, CA 90040
Telephone: (800) 338-9468 | (323) 888-8873 | Fax: (323) 888-9515
Hours: M - F, 7:30am to 5:00pm PST
www.pioneerind.com