



SERVICE PARTS LIST

BULLETIN NO.
54-40-2800

SPECIFY CATALOG NO. AND SERIAL NO. WHEN ORDERING PARTS		REVISED BULLETIN	DATE
M18™ FUEL JIG SAW (D-Handle)			Apr. 2018
CATALOG NO.	2737-20	STARTING SERIAL NO.	J70A
		WIRING INSTRUCTION SEE PAGE 3	

EXAMPLE:
Component Parts (Small #)
Are Included When Ordering
The Assembly (Large #).

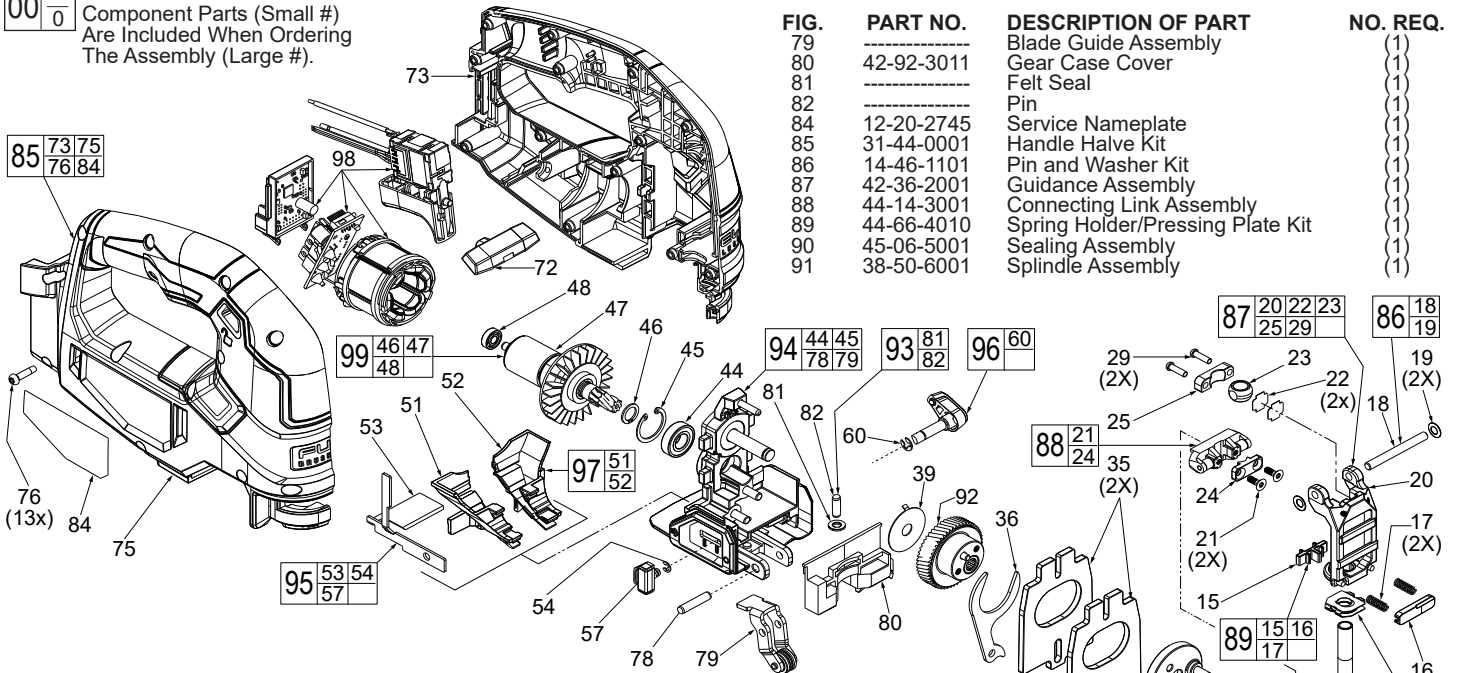


FIG.	PART NO.	DESCRIPTION OF PART	NO. REQ.
1	42-92-4001	Blade Cover	(1)
2	43-54-4001	Guard Wire	(1)
3	44-10-5001	Rotation Lever	(1)
4	40-50-1001	Spring	(1)
15	-----	Pressing Plate	(1)
16	-----	Spring Holder	(1)
17	-----	Spring	(2)
18	-----	Pin	(1)
19	-----	Disc Springs	(2)
20	-----	Spindle Guide	(1)
21	-----	M3.5 x 10mm Flat Hd. T-15 Mach. Scr.	(2)
22	-----	Leaf Spring	(2)
23	-----	Sliding Bearing	(1)
24	-----	Link Cover	(1)
25	-----	Cover	(1)
29	05-88-5380	M3.5 x 12mm Pan Hd. T-10 Mach. Scr.	(2)
30	34-60-4001	E-Retaining Ring	(1)
31	05-81-1070	M4 x 12mm Pan Hd. T-20 Mach. Screw	(2)
32	02-50-1260	Needle Bearing	(1)
33	45-88-1890	Spring Washer	(3)
34	44-66-1510	Eccentricity Plate	(1)
35	42-28-2001	Balance Block	(2)
36	44-66-1630	Drive Plate	(1)
39	45-88-3070	Washer	(1)
44	-----	Ball Bearing	(1)
45	-----	C-Retaining Ring	(1)
46	-----	Retaining Ring	(1)
47	-----	Rotor	(1)
48	-----	Ball Bearing	(1)
51	-----	Right Air Channel	(1)
52	-----	Left Air Channel	(1)
53	-----	Blower Shuttle	(1)
54	34-60-0401	E-Retaining Ring	(1)
57	-----	Blower Shut Off Button	(1)
60	34-60-0770	E-Retaining Ring	(1)
61	44-10-6001	Adjustable Base Lever	(1)
62	28-06-6001	Base	(1)
63	31-17-0570	Base Clamp	(1)
64	45-88-2060	Washer	(1)
65	05-74-1001	M6 Screw Bolt	(1)
66	05-81-1033	M4 x 9mm T-20 Screw	(1)
67	42-92-2001	Base Insert	(1)
68	05-81-1050	M4 x 10mm Flat Head T-20 Screw	(4)
69	31-15-0693	Base Cover	(1)
70	31-03-5001	Vacuum Attachment	(1)
72	42-42-8001	Lock Button	(1)
73	-----	Left Housing Halve - Support	(1)
74	05-88-1208	M4 x 13mm Flat Head T-20 Screw	(2)
75	-----	Right Housing Halve - Cover	(1)
76	05-88-1200	M4 x 16mm Pan Hd. ST T-20 Screw	(13)
77	43-84-1030	Anti-Splintering Insert	(1)
78	-----	Pin	(1)

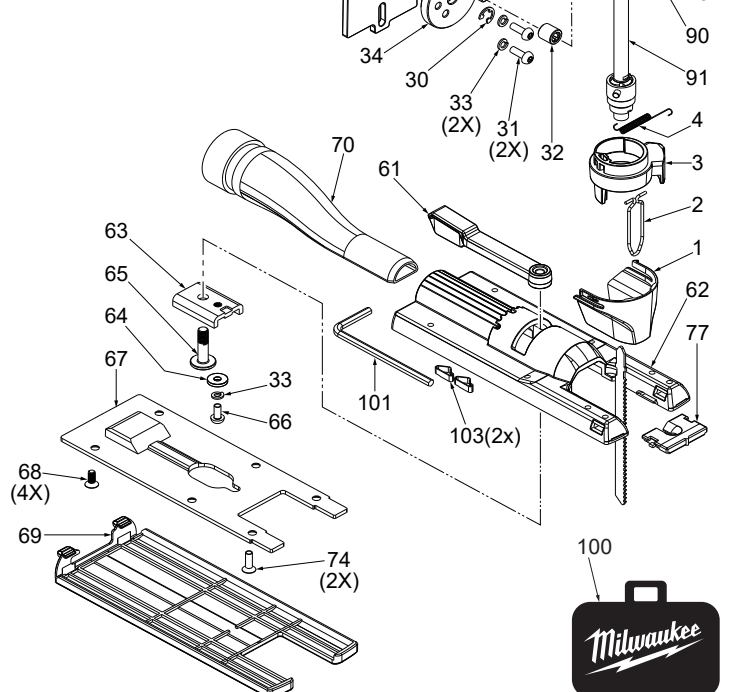


FIG.	PART NO.	DESCRIPTION OF PART	NO. REQ.
79	-----	Blade Guide Assembly	(1)
80	42-92-3011	Gear Case Cover	(1)
81	-----	Felt Seal	(1)
82	-----	Pin	(1)
84	12-20-2745	Service Nameplate	(1)
85	31-44-0001	Handle Halve Kit	(1)
86	14-46-1101	Pin and Washer Kit	(1)
87	42-36-2001	Guidance Assembly	(1)
88	44-14-3001	Connecting Link Assembly	(1)
89	44-66-4010	Spring Holder/Pressing Plate Kit	(1)
90	45-06-5001	Sealing Assembly	(1)
91	38-50-6001	Spindle Assembly	(1)
92	32-30-8001	Output Gear Assembly	(1)
93	14-46-7001	Orbit Pin and Seal Kit	(1)
94	28-14-8001	Gear Case Assembly	(1)
95	42-14-9001	Blower Assembly	(1)
96	30-58-0001	Orbit Adjustment Lever Assembly	(1)
97	43-56-1001	Channel Kit	(1)
98	14-20-9001	Electronic Assembly	(1)
99	16-01-0001	Rotor Assembly	(1)
100	42-55-0007	Blow Molded Carrying Case	(1)
101	45-96-8001	Wrench	(1)
102	10-20-5472	Warning Label (Not Shown)	(1)
103	40-50-2737	Spring Plate	(2)

