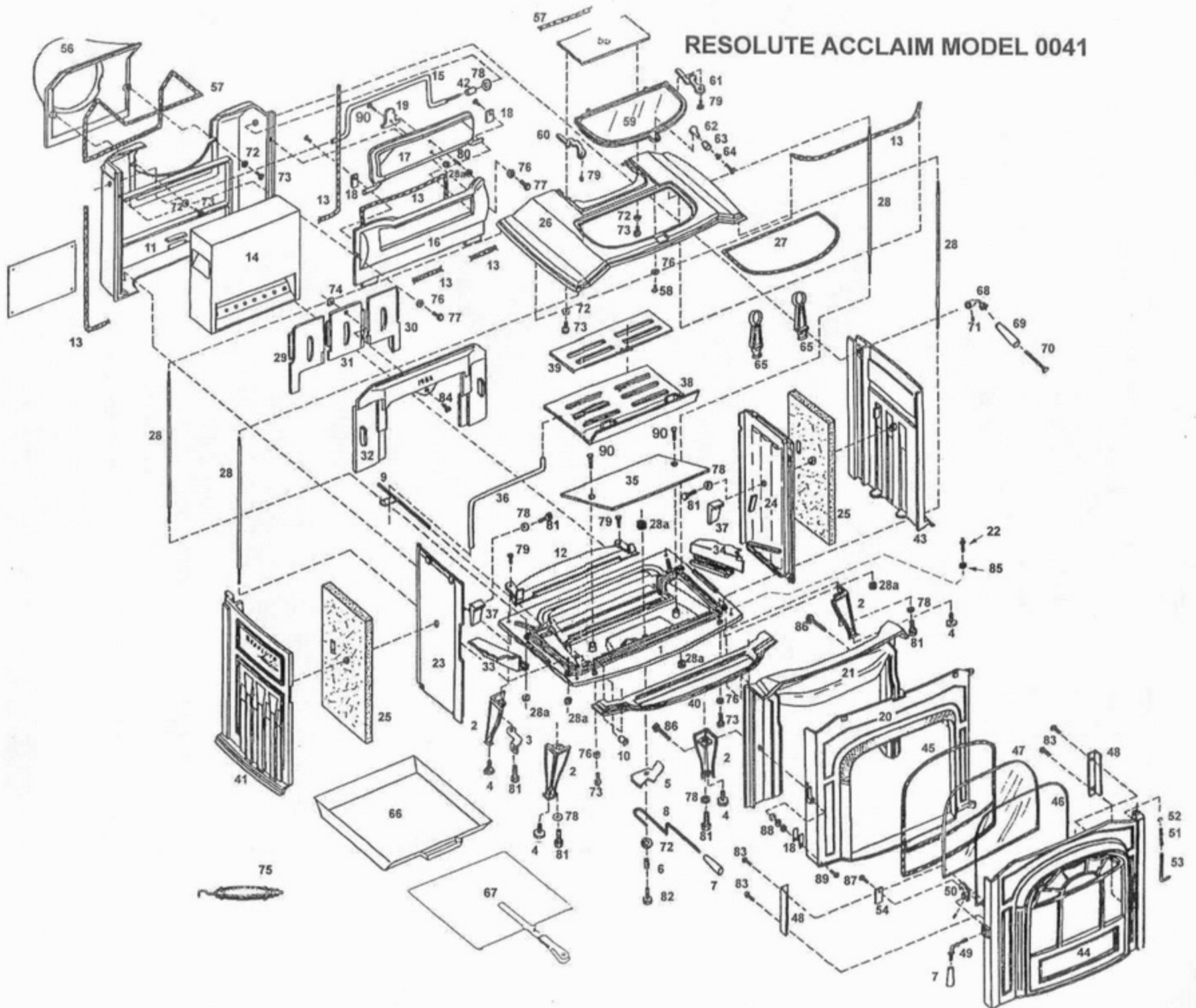


RESOLUTE ACCLAIM MODEL 0041



RESOLUTE ACCLAIM

MODEL #: 0041 RESOLUTE ACCLAIM

ATTN: TO STATIONARY GRATE IN 10/93. SHAKER GRATES ARE NO LONGER AVAILABLE. NEW GRATES MAY BE SUBSTITUTED FOR THE SHAKER GRATES BUT BOTH GRATES MUST BE REPLACED.

* denotes dead product - not available ** used only on units built prior to 10/93 with shaker grates

ITEM #	PART #	DESCRIPTION	ITEM #	PART #	DESCRIPTION
1	130-1853*	Bottom - Substitute 130-1854	44	130-1818*	Door - Sub 130-1865+160-0155/160-0623/120-3290
2	See Chart	Leg (4 Used)	45	120-3564	1/2" Fiberglass Low Density 6' Used
3	160-0600	Handle Holder	46	120-3556	3/16" Fiberglass 4' Used
4	120-1745	1/4 -20 x 1" Hex Hd Leg Levellers	47	140-1120	Glass IR Coated Outside
5	130-1814	Primary Air Valve	48	160-1399	Glass Retainer (2 Used)
6	120-1846	Spring	49	160-0623	Door Handle Shaft Only
7	160-0663	Air Valve/Door Handle	50	130-1813	Door Hook (Latch)
8	160-0621	Air Valve Shaft	51	160-0551	Compression Spring For Upper Door Pin
9	160-0915**	Grate Actuator	52	160-0553	C-Clip For Upper Door Pin
10	160-0880**	Damper Pull	53	160-0550	Upper Door Pin
11	130-1815*	Back - Substitute 130-1860	54	120-1843	Latch Spring (Mounted On Rear of Door)
12	130-1809	Package Support Plate	55	130-1817	Flue Collar Extension
13	120-3588	5/16 Medium Density Gasket	56	130-1816	Flue Collar
14	160-2497	Combustion Package	57	120-3591	5/16" Adhesive Backed Fiberglass
15	160-0853	Damper Rod	58	120-1308	Griddle Handle Screw
16	130-1805	Upper Fireback Only	59	130-6356	Griddle
	500-0336	Upper Fireback Damper Ass'y	60	130-1807	Left Griddle Quadrant
17	130-1829	Damper	61	130-1832	Right Griddle Quadrant
18	160-1488	Damper/Door Tab	62	160-0881	Griddle Handle Stub
19	130-1811	Damper Ramp	63	160-0661	Griddle Knob
20	130-1850*	Front - Not Available Substitute	64	120-1900	Bushing
	130-1861	Front Acclaim II		000-4360	Griddle Handles Complete (58,60,61,62,63,64,78)
	130-1865	Door Acclaim II with 160-0155 Latch	65	130-1806	Andiron
21	130-1803	Air Manifold	66	500-5774	Original Ashpan Ass'y - Use With Shaker Grates
22	160-0419	Lower Door Hinge Pin	67	500-5775	New Ashpan Ass'y - Use With Stationary Grates
23	130-1848*	Left Core Side-Sub FB Repair Kit	68	140-0935*	Ashpan Cover Original Ashpan
24	130-1849*	Rt Core Side-Sub FB Repair Kit	68	500-4265	Damper Handle Stub Nickel With Set Screw
25	120-3505*	Insulation	69	160-0664	Damper Handle Wood Part Only
26	130-1800*	Top - Substitute 130-1862	70	120-1310	1/4 -20 x 3" Slotted Pan Hd Handle Screw
27	120-3668	5/16" Fiberglass w/ Wire - 3.6'	71	120-0563	Damper Handle Set Screw 5/16-18 x 5/16"
28	160-1640	Tie Rod	72	120-2474	1/4 Standard Flat Washer
	500-7499	Tie Rod Set of 4 with Hex Nuts	73	120-1372	1/4 -20 x 5/8" Hex Head Cap Screw
28a	30002229	Tie Rod Nut (replaces 120-3210)	74	120-3329	1/4 -20 Square Nut
29	130-1835	Arch Insert Left	75	000-4349	Wireform Handle Complete (Not With All Units)
30	130-1837	Arch Insert Right	76	120-1373	1/4 Flat Washer
31	130-1838	Arch Insert Center	77	120-1374	1/4 -20 x 3/4" Hex Head Cap Screw
	000-5862	Set of Three Arch Inserts With Nut & Bolt	78	120-2488	3/8" Flat Washer
32	130-1826	Lower Fireback	79	120-1338	1/4 -20 x 1/2" Hex Head Cap Screw
33	130-1836*	Left Shoulder Plate - Sub. 130-1863	80	120-0436	1/4 -20 x 1" Socket Set Screw
34	130-1822*	Right Shoulder Plate - Sub. 130-1864	81	120-1432	3/8-16 x 1" hex Head Cap Screw
35	130-1804	Pit Plate	82	120-1378	1/4 -20 x 1 1/4" Hex Head Cap Screw Flat Head Zinc
36	160-0914	Grate Rod (Used With Shaker Grates)	83	120-0984	10-24 x 3/8" Phillips Pan Head Screw
37	130-1810	Wedge	84	120-1376	1/4 -20 x 1" Hex Head Cap Screw
38	130-1852	Front Grate (Stationary) Replaced 130-1828	85	120-3279	Hex Nut 5/16-18 Black
39	130-1851	Rear Grate (Stationary) Replaced 130-1820	86	120-1392	1/4 -20 x 2" Hex Head Cap Screw
40	130-1819	Ash Lip	87	120-0996	10-24 x 1/4" Phillips Truss Head Screw Zinc
41	130-1801*	Left End -Substitute Fireback Repair Kit	88	120-2475	Washer, 1/4 Flat Narrow
42	120-1780	Damper Rod Spacer	89	120-0461	1/4 -20 x 3/4" Socket But Head Cap Screw
43	130-1802*	Right End -Substitute Fireback Repair Kit	90	120-0809	1/4 -20 x 1" Phillips Flat Head Black

ACCLAIM 0041 ENAMEL PARTS

Part Name	Red -131	Sand -132	Blue -133	Midn't -134	Green -231	Ant Brn -139
Ash Lip	1311819	1311819	1331819	1341819	2311819	N/A
Door	1311865*	1321865*	1331865*	N/A	2311865*	N/A
Left End	N/A	N/A	N/A	N/A	N/A	N/A
Right End	N/A	N/A	N/A	N/A	N/A	N/A
Leg	1311833	1321833	1331833	1341833	2311833	N/A
Flue Collar	1311816	1321816	1331816	1341816	2311816	N/A
Flue Ext.	1311817	1321817	1331817	1341817	2311817	N/A
Short Leg	1311834	1321834	1331834	N/A	2311834	N/A
Top	1311862*	1321862*	1331862*	N/A	1321862	N/A

*Substitute for original number

ACCLAIM 0041 GASKETS

120-3588	5/16" Medium Density 6 Needle Fiberglass	3.2'	Back
		2'	Top (UFB Groove)
		3'	Upper Fireback for Damper
120-3668	5/16" Wire w/ Fiberglass Gasket Core	3.6'	Griddle
120-3564	½" Low Density Fiberglass	6"	Door
120-3591	5/16" Adhesive Backed Gasket	5'	Flue Collar
		1'	Flue Collar Extension
120-3556	3/16" 4 Needle Black Fiberglass	4"	Door Glass
(000-3427	Kit contains enough 3/16" gasket and cement to gasket the glass)		

ACCLAIM 0041 ACCESSORIES

HEAT SHIELDS

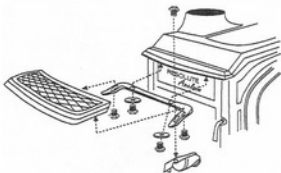
000-5834	Hardware Package of four 1¼" spacers Rear and Bottom
160-1755	1¼" spacers
200-2966	Instructions

OUTSIDE AIR KIT

140-3011	Outside Air Duct Flange
140-3012	Outside Air Body
160-1756	2" Spacers (2 used)
200-4021	Instructions
120-2058	#10 x ½" Phillips Pan Head SMS (2 Used)

WARMING SHELF

- 130-2211 Warming Shelf Classic Black
- 130-2211 Warming Shelf Classic Black
- 130-2220 Dragon Bracket Classic Black
- For All Other Enamel Colors Use the Prefixes:
Sand-132, Blue-133, Old Red-131, Mdnt-134,
Fgrn-231, Moonlight-237, New Red-232
- 130-2223 Shelf Bracket Large
- 160-1705 Mittenrack Short Nickel
- 120-1372 ¼ -20 x 5/8" Hex Head Cap Screws (2)
- 120-1338 ¼ -20 x ½" Hex Head Cap Screws (3)
- 120-2473 ¼" Washers (3)



ACCLAIM 0041 REPAIR KITS

000-5862 ARCH INSERT REPLACEMENT KIT

INCLUDES: Left Arch, Right Arch, Center Arch, Bolt & Nut, Instructions

**FOR THE FOLLOWING KITS YOU NEED TO ORDER 1-BOX 2 PLUS
1-BOX 1 OR 2490 LEFT & RIGHT SIDES IN THE APPROPRIATE COLOR**

000-5892 FIREBRICK INTERIOR KIT – BOX 2

INCLUDES:




- CAST PARTS:
1-Front Grate, 1-Rear Grate, 1-Bottom, 1-Inner Left Side, 1-Inner Right Side,
2-Sealing Plates, 1-Back, 1-Left Shoulder Plate, 1-Right Shoulder Plate
- NON CAST PARTS:
1-Left Arch Brick, 1-Right Arch Brick, 2-Side Bricks, 1-Tie Rod Set,
3-Tubes of Cement, 1-Can of Paint, 5.5' of 5/16 Fiberglass Gasket,
1-Brick Retainer, and Instructions
- HARDWARE:
2 -¼ -20 x 5/8" SS Hex Head Cap Screws, 2 -¼ -20 x 1" Hex Head Cap Screws
2 -¼ SS Flat Washers, 2 -¼ Flat Washers, 2 -Hex Nuts, 4 -¼ -20 Flex Lock Nuts

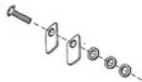
*denotes dead part

- 000-5887* Order Red Left Side 131-1857 & Right Side 131-1858
- 000-5889 Box 1 Blue Sides or Left Side 133-1857 & Right Side 133-1858
- 000-5890 Box 1 Green Sides or Left Side 231-1857 & Right Side 231-1858
- 000-5886* Order Classic Black Left Side 130-1857 and Right Side 130-1858
- 000-5888* Order Sand Left Side 132-1857 and Right Side 132-1858
- 000-5891* Midnight Sides Are No Longer Available
- 000-5893* Antique Brown Sides Are No Longer Available

NOTE: THE COMBUSTION PACKAGE (160-2497) AND THE UPPER FIREBACK ASSEMBLY (500-0336) ARE THE ONLY INTERIOR PARTS NOT INCLUDED IN THE REPAIR KIT. ORDER THESE TWO PARTS SEPARATELY IF THEY ARE NEEDED.

ACCLAIM 0041 HARDWARE

120-1322	10 -24 x ½" Hex Head Cap Screw Zinc (6-bottom assembly)	160-0623	Shaft Only	
120-1432	3/8-16 x 1" Zinc Hex Head Cap Screw (4-legs, 2-core sides [replaces 120-0482])	130-0813	Hook For Door Latch	
120-2488	Washer, Flat ¾ .442 id Zinc (1-damper rod, 2-core sides, 4-legs)	160-0663	Handle, Hard Wood Black (1-primary air assembly, 1-door handle assy)	
120-1745	¼ -20 x 1" Hex Head Leveller Bolts (4-legs)	160-0551	Spring (1-upper hinge pin of front door)	
120-1378	¼ -20 x 1¼" Hex Head Cap Screw Flat Head Zinc (1-primary air valve)	160-0550	Hinge Pin (1-front door)	
120-2472	Washer, ¼ Flat .266 id x 1 od SS (1-primary air valve)	160-0553	C-Clip (hinge pin on front door)	
120-1846	Spring, Friction (1-primary air valve)	120-0330	10-24 x ½" Socket Cup Point SS (1-griddle handle stub)	
120-3210	Nut, Hex Head ¼ -20 Plain (2-damper ramp, 1-primary air valve)	120-2474	Washer, ¼ Flat .131 id x .742 od Zinc (2-flue collar, 2-extension plate)	
120-1338	¼ -20 x ½" Hex Head Cap Screw Black Gr 5 (2-package supports, 2-damper tabs to upper fireback, 2-griddle quads)	120-3251	Nut, Hex 10-24 Zinc (1-griddle handle stub)	
120-0996	10-24 x ¼" Phillips Truss Head Screw Zinc (4-heat shield holes in back, 1-front door latch spring, 1-griddle handle)	120-1308	8-32 x 1" Phillips Pan Head Zinc (1-griddle handle)	
120-0436	¼ -20 x 1" SS Oval Point Socket Screw Black (1-damper ramp adjuster)	120-1900	Bushing, Griddle Handle	
120-0809	¼ -20 x 1" Phillips Flat Head Black (2-pit plate, 1-damper ramp)	120-1310	¼ -20 x 3" Slot Pan Head Screw Zinc (1-damper stub)	
120-1374	¼ -20 x ¾" Hex Head Cap Screw Black (2-upper fireback)	30002229	Nut, Hex Head ¼ -20 Flex Lock CDPLT (rep 120-3213) (4-tie rods, 1-primary air valve to bottom)	
120-2473	Washer, ¼ Flat .266 id x .629 od (2-ash lip, 2-upper fireback, 1-right end, 1-griddle handle)	120-0563	5/16-18 x 5/16" Socket Set Screw (1-damper stub)	
120-1392	¼ -20 x 2" Hex Head Cap Screw Zinc (2-air wash manifold)	120-1780	Spacer ¾ x 1" Zinc (1-damper rod)	
120-3279	Nut, Hex 5/16 -18 Black (1-hinge pin)	120-1780	Spacer ¾ x 1" Zinc (1-damper rod)	
120-1376	¼ -20 x 1" Hex Head Cap Screw Black Gr 5 (1-center arch insert)	120-3290	Nut, Jam Large Hex (1-latch to door shaft)	
120-3329	Nut, Square ¼ -20 (1-center arch insert)	120-2560	Washer, Narrow Flat 3/8" Zinc (1-door handle)	
160-1488	Damper Tab (2-door catch on stove front, 2-damper)	120-1843	Spring, Latch (1-back of door for hook)	
120-0461	¼ -20 x ¾" Socket But Head Cap Screw Black (1-door catches on stove front)	120-1372	¼ -20 x 5/8" Hex Head Cap Screw Black (2-ashlip, 2-flue collar, 2-flue collar extension)	
120-2475	Washer, ¼ Narrow Flat .275 id x .5 od (4-door catch on stove front)	120-0984	10-24 x ¾" Phillips Round Head Screw (4-glass retainers)	



120-1846 Friction Spring
(1-primary air assembly)
30001749 Pin, Cotter
(1-ashdoor hinge pin)
10-0991 10-24 x 3/4" Zinc Phillips Pan Head Screw
(1-left manifold to door right screw)
160-0616 Hinge Pin Upper
(2-door assemblies)
160-1396 Glass Clip, Long .75"
(6-glass panels)

120-8608 Pin, Hinge
(1-ashdoor)
120-1864 Eyelet, Thermostat Wire
160-1488 Tab, Damper
(3-damper assembly)
160-1036 Clip, Torsion Bar (Damper Rod)
160-0617 Hinge Pin Lower
(2-door assemblies)
160-1394 Glass Clip, Short .62"
(2-glass panels)