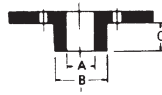


Template Guides



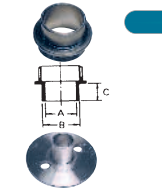
A	B	C	Model	Part#
19/64	3/8	29/64		164379-4
23/64	7/16	33/64		164775-6
7/16	1/2	33/64		164776-4
9/16	5/8	33/64	3612	164835-4
45/64	25/32	33/64	3612C	164393-0
15/16	1-1/16	33/64	3620	164470-8
63/64	1-9/64	19/32		163080-8
1-1/16	1-3/16	33/64		164471-6
1-29/64	1-37/64	29/64		164472-4



A	B	C	Model	Part#
5/16	3/8	5/16		323448-2
7/16	1/2	5/16		323449-0
9/16	5/8	5/16	3601B	323018-7
9/16	5/8	9/16		321308-2
11/32	7/16	3/16		323023-4



A	B	C	Model	Part#
57/64"	1"	7/16"		193235-1
21/32"	3/4"	9/16"		193261-0
11/32"	7/16"	5/32"		193262-8
13/32"	1/2"	5/16"	RP1101	193263-6
9/32"	3/8"	5/16"	RF1101 Kit	193264-4
5/8"	51/64"	9/16"	RF1100	193265-2
17/32"	5/8"	9/16"	RF1100	193266-0
1/4"	5/16"	5/32"	RF1101	193267-8
17/32"	5/8"	7/32"	RD1100	193366-6
3/4"	59/64"	9/16"	RD1101	193367-4
1-1/32"	1-3/16"	25/64"		193368-2
1-1/32"	1-1/4"	7/16"		193369-0
1-3/8"	1-35/64"	17/32"		193372-1
Locknut:				252627-4



A	B	C	Model	Part#
57/64	1	7/16		193235-1
Must be used with template guide lock nut (252627-4) and template guide adapter (321492-3) or (321493-1) for 3601B, 3612C/3612BRA, 3612C/3620				
Nut M30				252627-4
Template guide adapter 30 (321492-3) or (321493-1)				
Template guide 25, (321812-1)				

Straight – 2 Flute, 1/4" Shank

For general purpose routing and grooving where smoothness of cut and minimal vibration are desired

Type	A	B	C	D	E	Part#
Solid Carbide*	1/8	7/16	1-3/8	1/4	2	733003-1A
Carbide Tipped	1/16	1/4	1-1/8	1/4	1-5/8	733250-A
Carbide Tipped	3/16	7/16	1-3/8	1/4	2	733003-2A
Carbide Tipped	1/4	3/4	1-3/16	1/4	2	733003-4A
Carbide Tipped	1/4	1	1-3/16	1/4	2	733003-6A
Carbide Tipped	5/16	1	1-1/8	1/4	2	733003-8A
Carbide Tipped	3/8	1	1-1/8	1/4	2-1/4	733004-0A
Carbide Tipped	7/16	1	1	1/4	2-1/8	733004-1A
Carbide Tipped	1/2	1	1-1/8	1/4	2-1/8	733004-2A
Carbide Tipped	5/8	3/4	1-1/8	1/4	2	733004-4A
Carbide Tipped	3/4	3/4	1-1/8	1/4	2	733004-6A

2 Flute Flush Trimmer

For fast, smooth and accurate 90° flush trimming applications. Non marring ball bearing pilot. 1/4" (REPLACEMENT BEARING NO. 733132-1A) (3/8" REPLACEMENT BEARING NO. 733132-2B) (1/2" REPLACEMENT BEARING NO. 733132-4A)

Type	A	B	C	D	E	Part#
Carbide Tipped	1/4	1/2	1	1/4	2-1/2	733128-1A
Carbide Tipped	3/8	1/2	1	1/4	2	733128-7A
Carbide Tipped	3/8	1	1-1/4	1/4	2-1/2	733128-8A
Carbide Tipped	1/2	1/2	1-1/4	1/4	2	733128-9A
Carbide Tipped	1/2	1	1-1/4	1/4	2-1/2	733129-0A
Carbide Tipped	1/2	1	1-1/4	1/2	3	733129-1A
Carbide Tipped	1/2	2	1-1/4	1/2	4	733274-A

Straight – Single Flute

For rough routing, grooving and general stock removal. Single flute gives more efficient chip clearance for improved feed rates. 1/2" shank bits are for maximum strength production use.

Type	A	B	C	D	E	Part#
Carbide Tipped	1/4	1	1-3/16	1/4	2	733001-0A
Carbide Tipped	1/2	2	2-1/16	1/2	4-1/4	733002-6A

Straight – 2 Flute, 1/2" Shank

Larger 1/2" shank is stronger for production use situations

Type	A	B	C	D	E	Part#
Carbide Tipped	3/8	1	1-1/4	1/2	2-3/4	733005-4A
Carbide Tipped	1/2	1	1-5/16	1/2	2-5/8	733252-A
Carbide Tipped	1/2	1-1/4	1-7/16	1/2	2-7/8	733005-6A
Carbide Tipped	1/2	1-1/2	1-1/4	1/2	3-1/8	733005-8A
Carbide Tipped	1/2	2	2	1/2	4-1/4	733005-9A
Carbide Tipped	1/2	2-1/2	1-1/16	1/2	4-1/2	733254-A
Carbide Tipped	3/4	1-1/4	1-1/4	1/2	2-7/8	733006-4A
Carbide Tipped	7/8	1-1/4	1-3/16	1/2	2-7/8	733006-6A
Carbide Tipped	1	1-1/4	1-3/16	1/2	2-7/8	733006-8A

Core Box

For high quality radius cuts, rounded grooves, letter cutting, reeding, fluting and general ornamentation.

Type	Radius	A	B	C	D	E	Part#
Carbide Tipped	1/8	1/4	15/32	1-1/4	1/4	1-1/2	733008-2A
Carbide Tipped	3/16	3/8	9/16	1-1/4	1/4	1-1/2	733008-4A
Carbide Tipped	1/4	1/2	11/16	1-1/4	1/4	1-1/2	733008-6A
Carbide Tipped	5/16	5/8	11/16	1-1/4	1/4	1-1/2	733008-8A
Carbide Tipped	3/8	3/4	13/16	1-1/4	1/4	1-1/2	733009-0A
Carbide Tipped	1/2	1	5/8	15/16	1/4	1-3/4	733270-A

Panel Pilot

For fast door and window cutouts through covering sheets. Drill thru pilot point allows fast plunging and acts as pilot for guiding on framing after panels have been mounted.

Type	A	B	C	D	E	Part#
Carbide Tipped	1/4	3/4	1	1/4	2-1/2	733030-2A
Carbide Tipped	1/2	1-1/8	1-1/2	1/2	3-1/2	733030-6A

Top Bearing Straight – 2 Flute

For cutting grooves, dados and rabbets. Cuts flush with bearing to give exact duplication of template.

Type	A	B	C	D	E	Part#
Carbide Tipped	1/2	1/2	1	1/4	1-5/8	733325-A
Carbide Tipped	1/2	1	1-1/4	1/4	2	733012-1A
Carbide Tipped	5/8	1	7/8	1/4	2-1/8	733258-A
Carbide Tipped	3/4	1	13/16	1/4	2-1/4	733259-A
Carbide Tipped	1	1	1-1/8	3/8	2-3/4	733260-A

Top Bearing Round Nose & V Grooving – 2 Flute

For cutting decorative grooves where template is on top of the workpiece. Gives exact duplication of template. REPLACEMENT BALL BEARING NO. 733132-5A

Type	A	B	C	D	E	Part#
Carbide Tipped	1/2	1/2	1-1/2	1/4	2	733013-1A
Carbide Tipped	1/2	1/2	1-1/2	1/4	2	733014-1A

Beading

For decorative molding or edging. Rounds corners and produces small edge beads. Shallower depth setting eliminates top edge bead. REPLACEMENT BEARING NO. 733132-2B

Type	A	B	C	D	E	Part#
C.T. Ball Bearing Pilot	3/16	3/8	1-1/4	1/4	1-3/4	733121-4A
C.T. Ball Bearing Pilot	1/4	1/2	1-1/4	1/4	1-3/4	733121-6A
C.T. Ball Bearing Pilot	5/16	1/2	1-1/4	1/4	1-7/8	733121-8A
C.T. Ball Bearing Pilot	3/8	5/8	1-1/4	1/4	1-7/8	733122-0A
C.T. Ball Bearing Pilot	1/2	3/4	1-1/4	1/4	2	733122-2A

V Grooving

For sign lettering, decorative work, plank simulation on panels, and cabinet door grooving. Recommended maximum depth of cut is not greater than half of the cutting diameter, F.

Type	A	B	C	D	E	F	Part#
Carbide Tipped	1/4	1/2	1-3/16	1/4	1-3/4	3/8	733009-2A
Carbide Tipped	7/16	3/4	1-5/16	1/4	1-7/8	5/8	733009-4A
Carbide Tipped	9/16	7/8	1	1/4	2	7/8	733009-5A

Dovetail

For smooth dovetail joints and drawer fingers

Type	A	B	C	D	E	Degree	Part#
Carbide Tipped	9-16"	25/64"	1-49/64"	1/4"	2-5/32"	35°	793372-7
Carbide Tipped	9-16"	25/64"	1-49/64"	1/4"	2-5/32"	35°	793373-5
	9-16"	9/16"	1-19/32"	1/4"	2-5/32"	23°	793374-3
	1/2"	1/2"	1-3/8"	1/2"	2/1/8"	14°	733265-A

Keyhole Slot

Plunge cut followed by a side movement of router produces the slot for screw and nail heads for mounting picture frames, plaques.

Type	A	B	C	D	E	Part#
Carbide Tipped	3/8	3/8	1	1/4	1-1/2	733010-1A

Corner Rounding

For smooth decorative edge rounding or molding. Lower depth setting produces a rounded corner with a decorative bead. REPLACEMENT BEARING NO. 733132-4A NO. 733132-2A

Type	A	B	C	D	E	Lrg. Diam.	Part#
C.T. Ball Bearing Pilot	1/8	1/2	1-1/4	1/4	2-1/4	—	733120-1A
C.T. Ball Bearing Pilot	3/16	3/8	1-1/4	1/4	1-3/4	—	733120-0A
C.T. Ball Bearing Pilot	1/4	1/2	1-1/4	1/4	1-3/4	—	733120-2A
C.T. Ball Bearing Pilot *	1/4	1/2	1-5/16	1/2	2-1/8	1	733291-A
C.T. Ball Bearing Pilot	5/16	1/2	1-1/4	1/4	1-7/8	—	733120-4A
C.T. Ball Bearing Pilot	3/8	5/8	1-1/4	1/4	1-7/8	—	733120-6A
C.T. Ball Bearing Pilot	1/2	3/4	1-1/4	1/4	2	—	733120-8A
C.T. Ball Bearing Pilot	3/8	5/8	1-1/2	1/2	2-1/4	—	733121-0A
C.T. Ball Bearing Pilot	1/2	3/4	1-1/2	1/2	2-3/8	—	733121-2A
1. C.T. Ball Bearing Pilot *	5/8	7/8	1-5/16	1/2	2-3/8	1-3/4	733292-A
2. C.T. Ball Bearing Pilot *	3/4	1	1-5/16	1/2	2-3/8	2	733293-A
3. C.T. Ball Bearing Pilot *	1	1-1/4	1-3/8	1/2	3-3/16	2-1/2	733329-A