

**VENETO ELONGATED 1-PIECE TOILET,  
 MODEL 9712X**

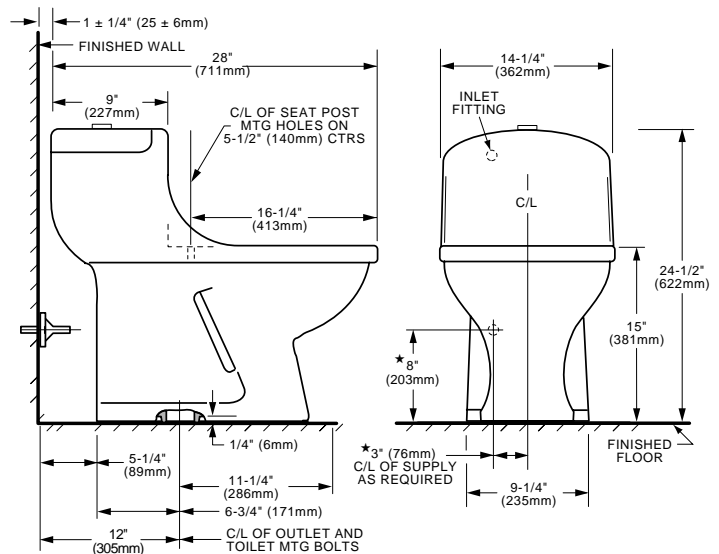
- Design-matched to Veneto Suite products
- Vitreous china construction
- Contoured, low-profile, 1-piece design eliminates crevices and squared corners
- Fitted tank cover with integral chrome, polished brass, or gold push button actuator
- Available in white or biscuit
- Low-consumption, quiet refill (1.6 gpf/6.0 Lpf)
- Elongated siphon action bowl with smooth-sided, concealed trapway
- Rim height at 15" (381mm)
- Internal trapway area fully glazed
- 100% factory flush tested
- Includes color-matched bolt caps and solid plastic design-matched comfort toilet seat with chrome, polished brass, or gold hinges
- Includes flex supply connection with integral shutoff control valve



- 97120** Toilet complete with chrome push button actuator and seat hinges
- 97122** Toilet complete with polished brass push button actuator and seat hinges
- 97123** Toilet complete with gold push button actuator and seat hinges

**Nominal Overall Dimensions:**  
 28" x 14-1/4" x 24-1/2" (711 x 362 x 622mm)

Hydraulic performance, water surface area, trap seal depth, ballpass diameter, and all fixture dimensions meet or exceed ANSI Standard A112.19.2M requirements.



**To Be Specified**

- Color:

**NOTES:**

THIS TOILET IS DESIGNED TO ROUGH-IN AT A MINIMUM DIMENSION OF 12" (305MM) FROM FINISHED WALL TO C/L OF OUTLET. SUPPLIED WITH INSTALLATION TEMPLATE.

INCLUDES FLEX SUPPLY WITH INTEGRAL SHUTOFF VALVE, SEAT, AND BOLT CAPS.

★ DIMENSIONS SHOWN FOR LOCATION OF CONCEALED SUPPLY ARE SUGGESTED. IMPORTANT: Dimensions of fixtures are nominal and may vary within the range of tolerances established by ANSI Standard A112.19.2M.

These measurements are subject to change or cancellation. No responsibility is assumed for use of superseded or voided pages.

**SPS 9712X**