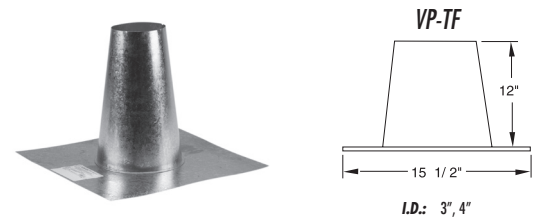


Pellet Pipe Flashings

- Used to waterproof installations through a flat roof.

Item Description	3"Diameter		4"Diameter	
	Product No.	Part No.	Product No.	Part No.
Tall Cone Flashing	243815	3VP-TF	244815	4VP-TF

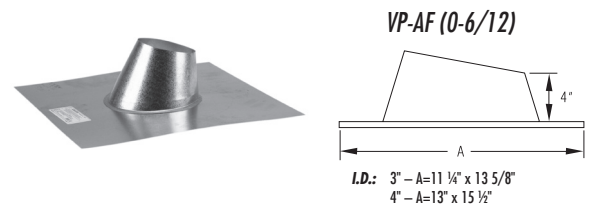
TALL CONE FLASHING



- Used to waterproof installations that penetrate the roof line.

Item Description	3"Diameter		4"Diameter	
	Product No.	Part No.	Product No.	Part No.
Adj. Flashing	243825	3VP-AF	244825	4VP-AF

ADJUSTABLE FLASHING

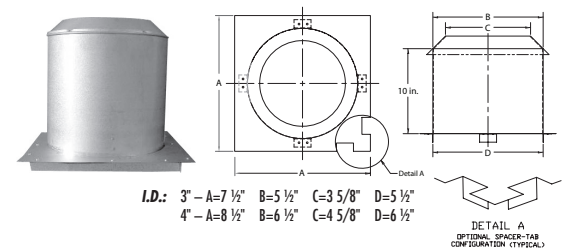


Pellet Pipe Shields

- The attic insulation shield is required to guard against the hazard of blown in or blanket insulation occupying the required 1" air space around the vent.

Item Description	3"Diameter		4"Diameter	
	Product No.	Part No.	Product No.	Part No.
Attic Insulation Shield	243490	3VP-AIS	244490	4VP-AIS

ATTIC INSULATION SHIELD



- Used in Thru-the-Wall installations.
- Maintains airspace clearance.
- Centers pipe between walls.
- Telescopic design can be used on standard walls - WT: 4" - 7" WTT: 6.5" - 11.5"

Item Description	3"Diameter		4"Diameter	
	Product No.	Part No.	Product No.	Part No.
Wall Thimble	243460	3VP-WT	244460	4VP-WT
Wall Thimble, Thick	243461	3VP-WTT	244461	4VP-WTT

WALL THIMBLE

