

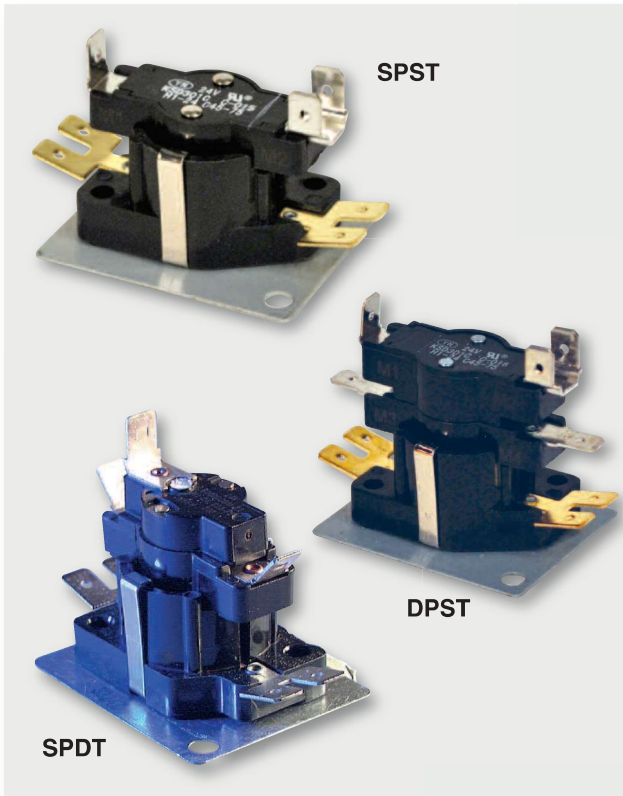


## Thermal Time Delay Relays Sequencers

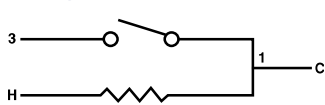
These time delay relays are used for a variety of applications in heating and air conditioning. They operate by means of a solid state PTC (positive temperature coefficient) device which heats up as current passes through it from the control circuit. This heat causes a positive, snap-acting disc to make or break the necessary contacts.

### Features:

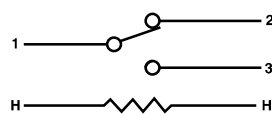
- Shock & vibration resistant internal snap action automatic reset switch mechanism assures positive make/break action
- Non-positional
- Wide selection for any application
- Voltage and ambient compensated
- UL and CSA listed
- Used for electric heat, air conditioning, heat pumps, gas & oil furnaces, unit heaters and commercial refrigeration



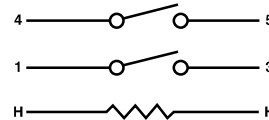
### Diagrams:



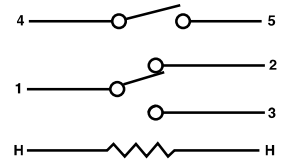
Single Pole Single Throw



Single Pole Double Throw  
(Contacts 1 and 3 are normally open)



Double Pole Single Throw



Double Pole Single Throw  
Single Pole Double Throw  
(Contacts 1 and 3 are normally open)

| MARS NO. | REPLACES KLIXON TYPE 6000 | SWITCH TYPE               | CONTROL VOLTAGE | DELAY (SEC.) |       |
|----------|---------------------------|---------------------------|-----------------|--------------|-------|
|          |                           |                           |                 | ON           | OFF   |
| 33215    | G0-18                     | DPST & SPDT<br>1 & 3 N.O. | 24              | 1-60         | 1-45  |
| 33217    | G4-9                      | 1 & 2 N.C., 4 & 5 N.O.    | 240             | 20-70        | 20-80 |
| 33241    | AOM                       | SPST N.O.                 | 24              | 1-24         | 45-75 |
| 33242    | AOM                       |                           | 24              | 30-75        | 1-40  |
| 33243    | AOM                       |                           | 24              | 1-60         | 1-45  |
| 33244    | EOM                       | DPST N.O.                 | 24              | 1-24         | 45-75 |
| 33245    | EOM                       |                           | 24              | 30-75        | 1-40  |
| 33246    | EOM                       |                           | 24              | 1-60         | 1-45  |
| 33247    | COM-21                    | SPDT 1 & 3 N.O.           | 24              | 1-24         | 15-75 |
| 33255    | E4                        | DPST N.O.                 | 120             | 30-110       | 15-65 |
| 33256    | E4                        |                           | 120             | 20-70        | 20-80 |
| 33265    | E4                        | DPST N.O.                 | 240             | 30-110       | 15-65 |
| 33266    | E4                        |                           | 240             | 20-70        | 20-80 |
| 33267    | C4M-13                    | SPDT 1 & 3 N.O.           | 240             | 20-70        | 20-80 |