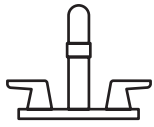


American Standard



American Standard is devoted to making life, in the heart of your home, better every day...

...so, thank you for inviting us in! With the very best in kitchen and bathroom products, we are here to help make your life happier, healthier and simpler. Our commitment to quality, innovation and performance has made us part of your everyday routine for nearly 150 years, and we look forward to being a part of your life for many years to come.

Learn more at www.AmericanStandard.com

REGISTER YOUR WARRANTY

Try the easy-scan **QR code** to quickly enter your information or find your product's detailed warranty here:

www.AmericanStandard.com/warranty

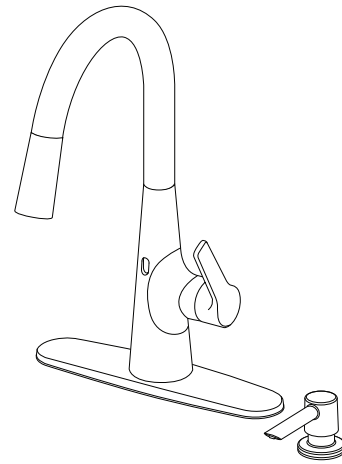


Registering allows you to keep your product information safe, and us the ability to contact you in the event of a product recall or *any* news about your purchase.

And if ever you have a question or need help...?

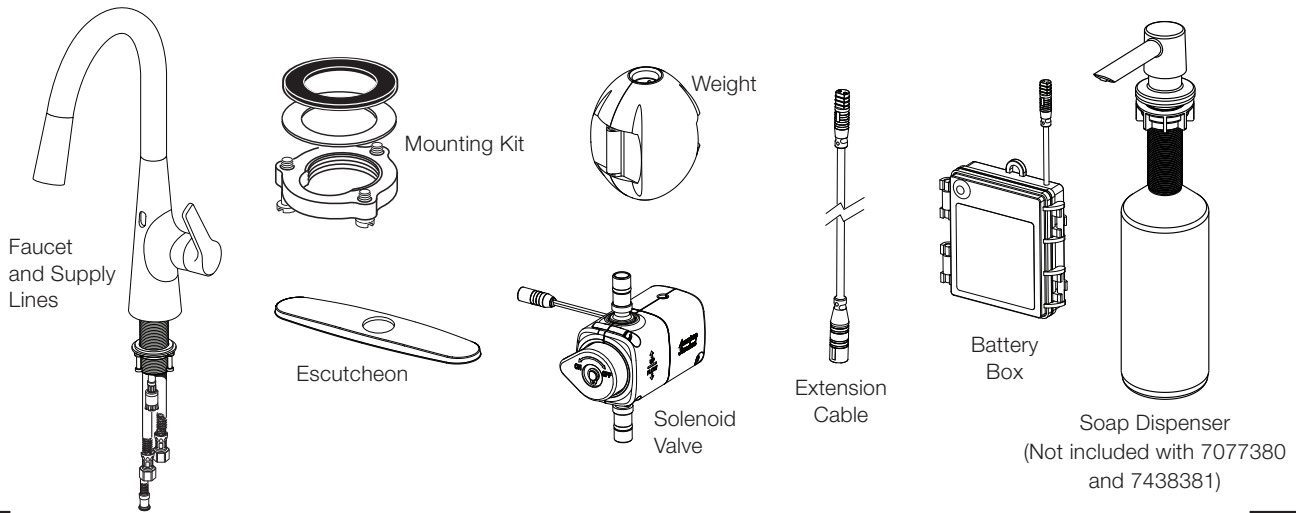
Call us at 1-855-815-0004

OWNERS MANUAL
American Standard Electronic
Pull-Down Kitchen Faucet
 7441381 / 7442381 / 7438381
 7077380 / 7418381



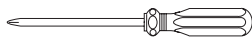
INSIDE THE BOX

Image shown may vary from product purchased.



RECOMMENDED TOOLS

Installation steps will indicate which tools should be used with associated letter



Phillips
Screwdriver

A



Channel
Locks

B



Adjustable
Wrench

C



BEFORE INSTALLING YOUR FAUCET

Turn off hot and cold water supplies before beginning.

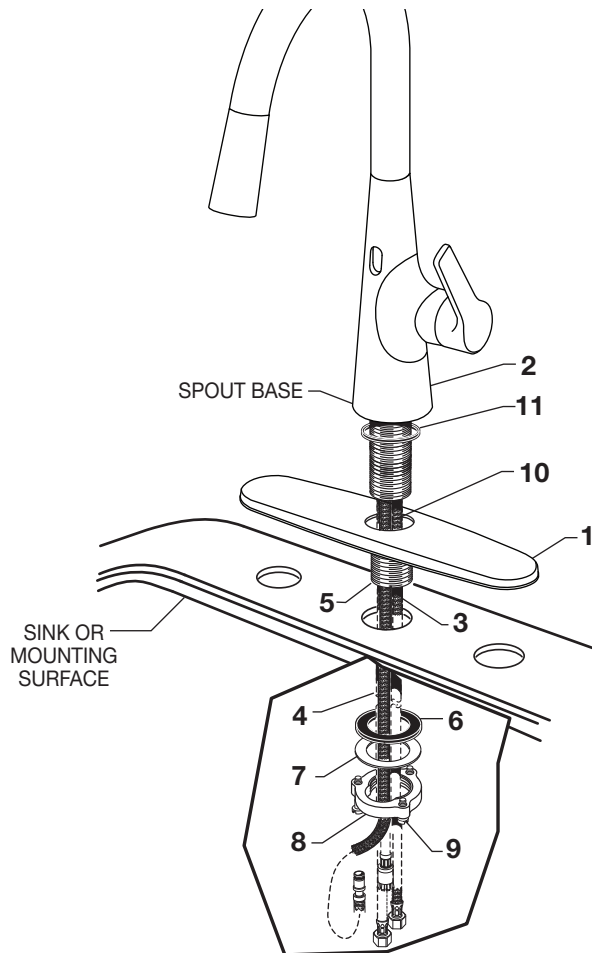
INSTALLATION INSTRUCTIONS

1

INSTALL WITH ESCUTCHEON



Turn off hot and cold water supplies before beginning.



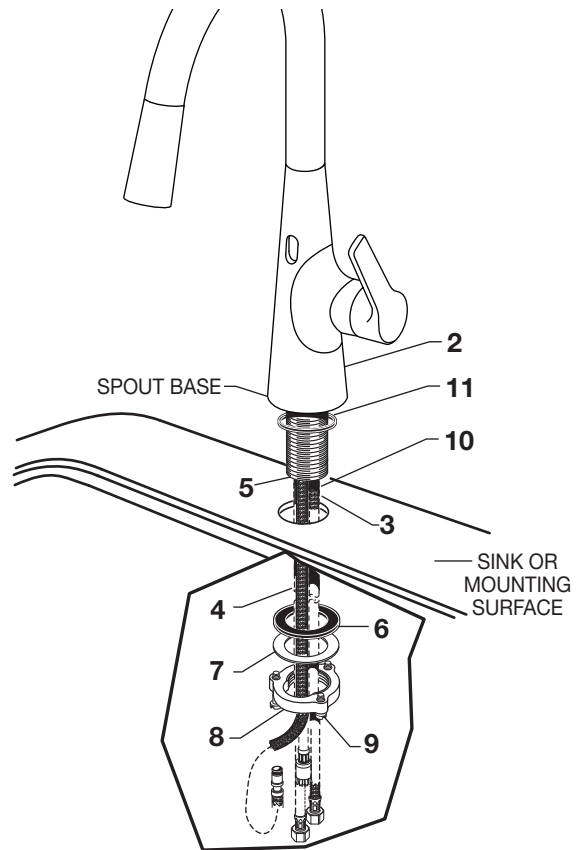
Installation with Escutcheon

- Make certain the SEAL (11) is properly seated in bottom recess of FAUCET (2).
- Place deck escutcheon over mounting holes of the deck.
- Insert SUPPLY CABLES (10), HOSES (3), SPRAY HOSE (4) and SHANK (5) through hole of DECK ESCUTCHEON (1) and mounting surface.
- Follow mounting instructions in step 1A to secure faucet to mounting surface.

A

1A

INSTALL WITHOUT ESCUTCHEON



Installation without Escutcheon

- Make certain the SEAL (11) is properly seated in bottom recess of FAUCET (2). Insert cables (10), hoses (3) and shank (5) through mounting ring and deck, seat SPOUT BASE onto sink or mounting surface. **Do not use putty.**
- From below: Insert CABLES (11) and HOSES (3) through RUBBER WASHER (6), BRASS WASHER (7), and threaded LOCKNUT (8).
- Assemble RUBBER WASHER (6), BRASS WASHER (7), and threaded LOCKNUT (8) onto SHANK (5) from underside of sink or mounting surface. Hand tighten LOCKNUT (8).
- Make sure faucet is aligned properly with handle on the right and logo facing directly forward.
- Use a screwdriver to tighten SCREWS (9) on LOCKNUT (8). Work your way around LOCKNUT (8), tightening the screws slightly each time until all are snug to ensure even pressure.

A

American Standard

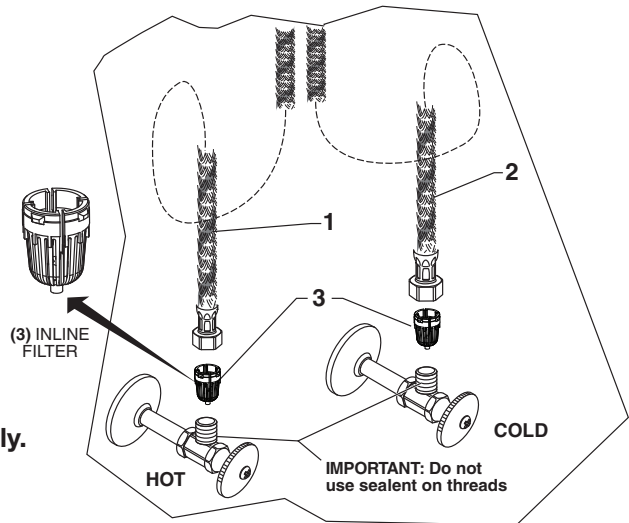
2

MAKE WATER SUPPLY CONNECTIONS



Turn off hot and cold water supplies before beginning.

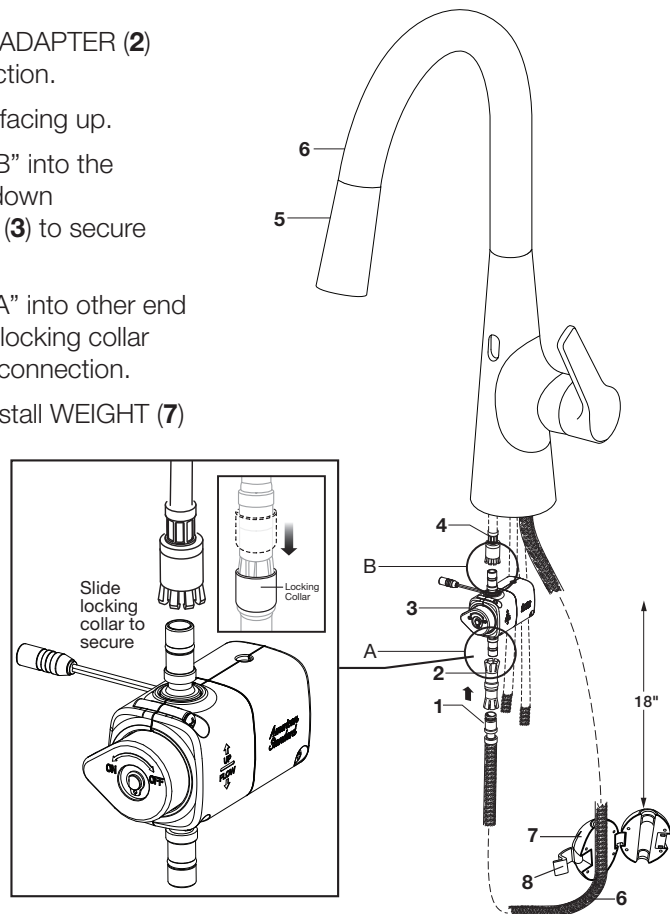
- Install **INLINE FILTER (3)** on each wall supply outlet. Be sure that **INLINE FILTER (3)** is inserted in the correct direction. (See Illustration)
- Connect **FLEXIBLE SUPPLY HOSES (1, 2)** directly to **INLINE FILTER (3)**. Connection on fitting supplies are 3/8" compression. Connect left supply hose (Red Label) to Hot wall supply. Connect right supply hose (Blue Label) to Cold wall supply. Use adjustable wrench to tighten connections. Do not over tighten.
- * Faucet supplies are 35" long from faucet base.
- **Note: If additional supply length is required, installer must purchase additional parts separately.**
- **Important: If SUPPLY HOSES (1, 2) are too long, loop as illustrated to avoid kinking.**



3

CONNECT SPRAY HOSE, SOLENOID ASSEMBLY, AND INSTALL WEIGHT

- Push the **SPRAY HOSE END (1)** into **FEMALE ADAPTER (2)** and slide down locking collar to secure connection.
- Orient solenoid valve with the orientation label facing up.
- Push **SOLENOID ASSEMBLY (3)** connection "B" into the **HOSE CONNECTOR (4)** as shown, and slide down locking collar towards **SOLENOID ASSEMBLY (3)** to secure connection.
- Push **SOLENOID ASSEMBLY (3)** connection "A" into other end of **FEMALE ADAPTER (2)** as shown, and slide locking collar towards **SOLENOID ASSEMBLY (3)** to secure connection.
- With **SPRAY HEAD (5)** seated in **SPOUT (6)**, install **WEIGHT (7)** onto **HOSE (6)** 24 inches from the underside of the sink deck and secure with **LATCH (8)**.
NOTE: there is a label on the hose indicating weight placement.
- **Important:** Make sure you pull out hose and check to see that it moves freely and is not obstructed by supply hoses, solenoid valve or items in the bottom of the cabinet.

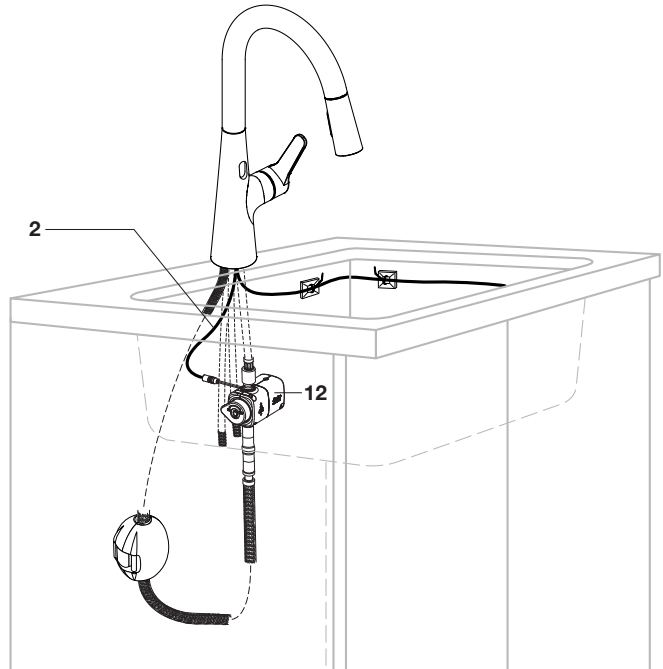


4

ELECTRICAL CONNECTIONS - SENSOR TO SOLENOID

- Connect SOLENOID CONNECTOR (12) with the SENSOR CONNECTOR (2) from the faucet.

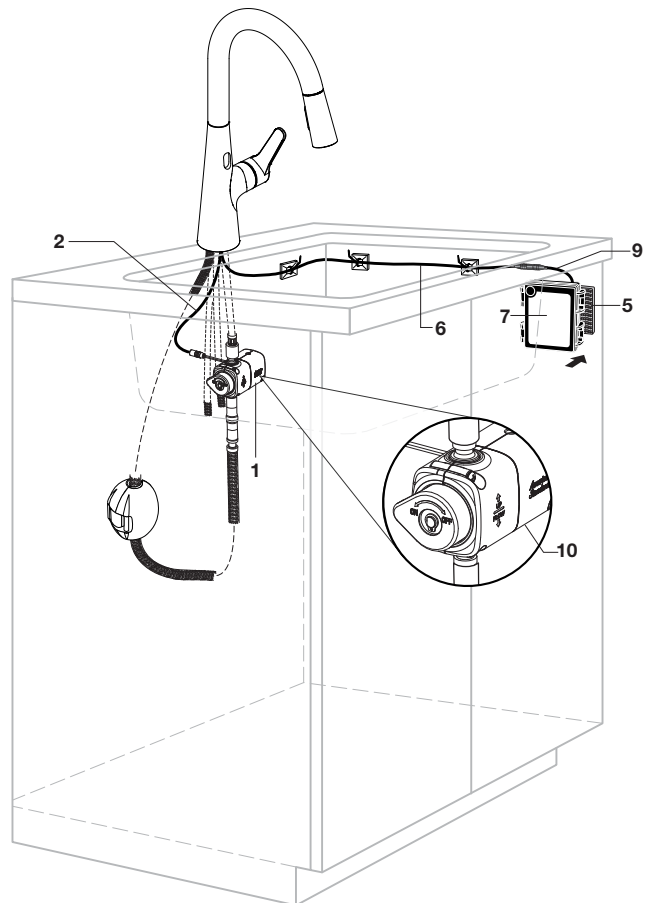
NOTE: Use Qty. (4) AA Alkaline type batteries only.



5

ELECTRICAL CONNECTIONS – BATTERY HOLDER

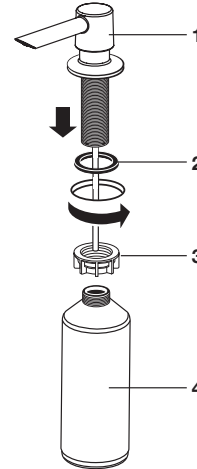
- Identify desired BATTERY HOLDER (7) location. Battery holder should be located so batteries can be easily accessed, with in 6ft of the faucet hook and loop (BLACK STRIP) (5).
- Attach 'hook to loop' fastener (BLACK STRIP) (5) to the back side of the BATTERY HOLDER (7) and attach 'hook to loop' fastener (BLACK STRIP) (5) on desired location inside the kitchen cabinet. Wipe mounting surface clean before attaching 'hook to loop' fastener (BLACK STRIP) (5).
- Ensure that the BYPASS KNOB (10) on the SOLENOID ASSEMBLY (1) is in the "OFF" position.
- Connect the BATTERY HOLDER CABLE (9) to the other end of the long SENSOR CABLE (6), that is coming out of the faucet. Use the provided extension cable if necessary. The sensor will start to blink several times and then stop.



6

INSTALL SOAP DISPENSER

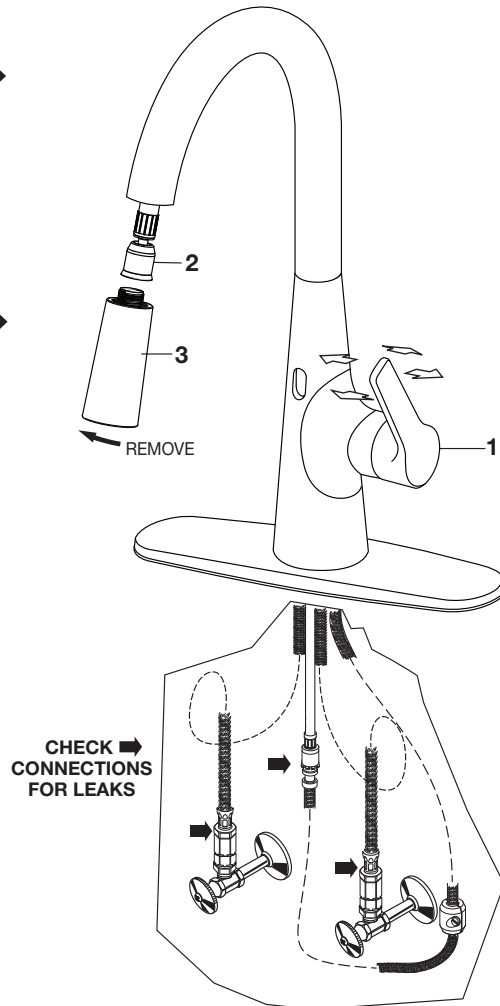
- Insert SOAP DISPENSER SHANK (1) through O-RING (2) and the deck.
- Thread MOUNTING NUT (3) on to SOAP DISPENSER SHANK (1) to secure it to the deck.
- Fill SOAP BOTTLE (4) and thread it on to SOAP DISPENSER SHANK (1).



7

TEST INSTALLED FAUCET & CHECK CONNECTIONS FOR LEAKS

- Move HANDLE (1) into "off" position.
- Turn on water supplies and check connections for leaks. ➡
- With HANDLE (1) in "off" position, unthread SPRAY (3) from HOSE (2).
- Operate HANDLE (2) up and down, left and right to flush water lines thoroughly.
- Replace SPRAY (3) onto HOSE (2).
- Operate HAND SPRAY and check connections for leaks. ➡



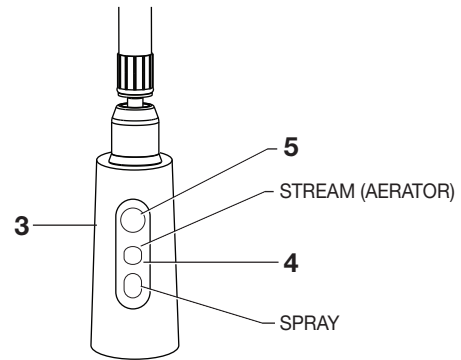
8

FAUCET OPERATION

FEATURES

Safety Timer

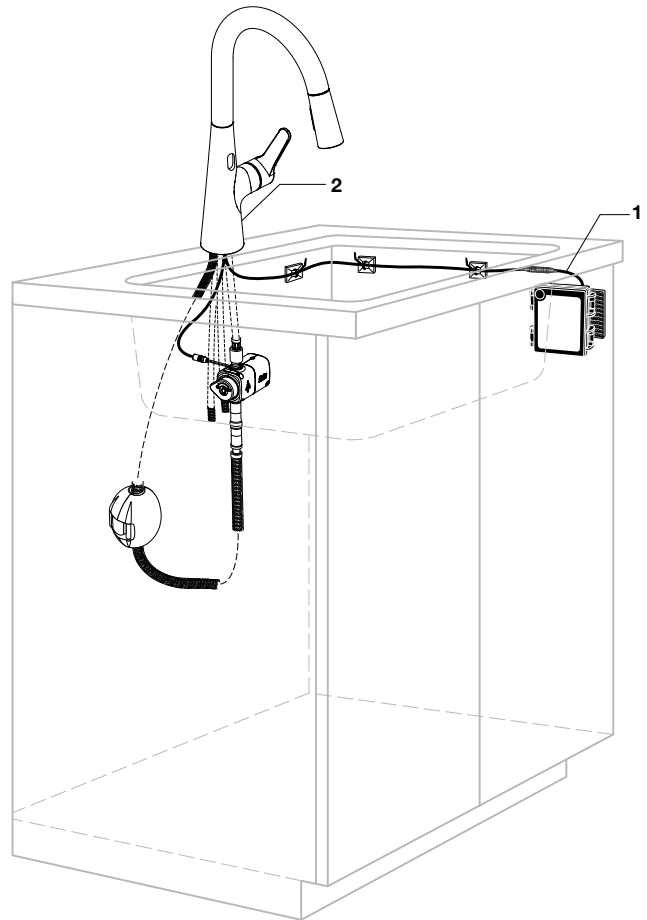
- The faucet will automatically turn off the water after 2 minutes of continuous use. Momentarily place your hand in front of the sensor to turn on the water.
- With FAUCET on, press TOGGLE BUTTON (4) on SPRAY (3) to switch from stream to spray.
- Press and hold PAUSE BUTTON (5) to temporarily stop flow from SPRAY (3). Release PAUSE BUTTON (5) to resume flow from SPRAY (3).



9

CHANGE SENSOR RANGE

- Disconnect the BLACK POWER SUPPLY CONNECTOR (1) and reconnect.
- While the SENSOR CONTROL LED (2) is blinking slowly, place your hand 1 - 2 in. (25.4-50.8mm) in front of the sensor.
- When the LED stops blinking and stays "ON", move your hand to the desired position and hold in place until the LED begins to blink again.
- Once the SENSOR CONTROL LED (2) begins to blink again, remove your hand from the detection zone. When the flashing stops, the detection distance is set.



10

SERVICE

Battery needs replacement:

- Sensor will start to blink continuously every second. This is the indication that the batteries are low in power.
- Replace batteries in battery holder with Qty (4) AA alkaline type batteries.
- Batteries last approximately one year.
- Always change all 4 batteries. Failure to replacing all 4 batteries at the same time may cause faucet electronics to not work properly.

Reduced or distorted flow:

Debris or dirt accumulating at inlet or AERATOR MAY CAUSE REDUCED OR DISTORTED FLOW.

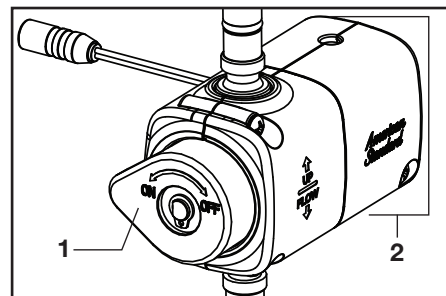
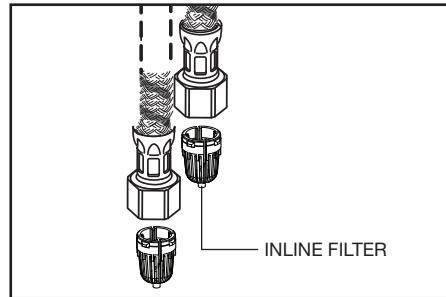
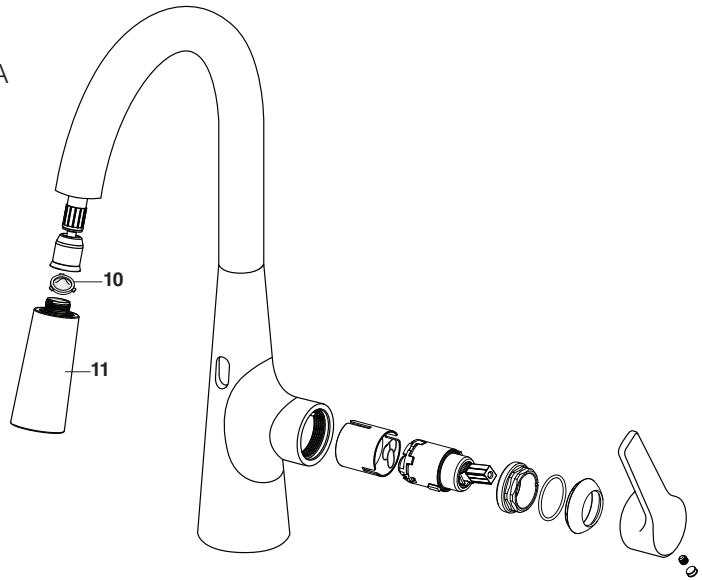
- A) Clean inline filter at inlet hoses.
- B) Turn hot and cold water supply off. Open valve in mixed position for two seconds to relief pressure close valve.
- C) Disconnect inlet hoses at stop valve and clean screen filter. If necessary remove inline filter and rinse at another water source.

Aerator Clean Out

- Unthread the AERATOR (8) with a coin or flat head screwdriver and clean it of any debris.
- Clean out the SCREEN (10) by removing SPRAY HEAD (11).

Power failure (manual bypass):

- In the event of a power failure, turn the BYPASS KNOB (1) on the SOLENOID ASSEMBLY (2) to the "ON" position. The faucet will be in MANUAL MODE (see section 5) and the handle can be used to turn on and off the water.



11

CARE INSTRUCTIONS

DO: SIMPLY RINSE THE PRODUCT CLEAN WITH CLEAR WATER. DRY WITH A SOFT COTTON FLANNEL CLOTH. **DO NOT:** DO NOT CLEAN THE PRODUCT WITH SOAPS, ACID, POLISH, ABRASIVES, HARSH CLEANERS, OR A CLOTH WITH A COARSE SURFACE.

TELL US WHAT YOU THINK!

Please leave us a product review or story
at **AmericanStandard.com/reviews**

Find installation videos at
youtube.com/americanstandard

Register your warranty and sign up for an idea-filled newsletter at
AmericanStandard-us.com/support/warranty

**PLEASE COMPLETE AMERICAN STANDARD WARRANTY REGISTRATION PROCESS AND
SAVE THIS WARRANTY INFORMATION IMPORTANT:**

Registration of the sink must be completed for this warranty to become effective. Your registration will make it easier to contact you in the event of a product recall.*

INSTRUCTIONS: Register your sink at www.americanstandard.com. Please save your proof of purchase (sale receipt). If you need assistance or do not have access to our website, please contact American Standard Customer Care at: (800) 442-1902. An American Standard representative will assist in completing the warranty registration.

*In California, your warranty rights remain intact even if you do not complete the registration process.



SHARE YOUR NEW PRODUCT!

Tag us @american_standard on Instagram
and show us how your new product looks.

≡ WANT MORE INFO?

For questions or help call us at **855-815-0004**,
or visit **AmericanStandard.com**

UNITED STATES

American Standard Brands
865 Centennial Ave.
Piscataway, New Jersey 08854
Attention: Director of Customer Care
For residents of the United States,
warranty information may also be
obtained by calling the following
toll free number: (855) 815-0004
www.AmericanStandard.com

CANADA

LIXIL Canada, Inc.
5900 Avebury Rd.
Mississauga, Ontario
Canada L5R 3M3
Toll Free: (800) 387-0369
AmericanStandard.ca/support/warranty

MEXICO

American Standard B&K Mexico
S. de R.L. de C.V.
Via Morelos #330
Col. Santa Clara
Ecatepec 55540 Edo. Mexico
Toll Free: 800-839-1200
AmericanStandard.com.mx/garantia

M985148 EN Rev. 1.0 (1/24)

7441381/7442381/7438381/7077380/7418381

PART OF **LIXIL**

American Standard