

B R A D F O R D W H I T E



Infiniti[®] GS – Infiniti[®] GR

Intelligent, Efficient and High-Performance
Tankless Water Heaters



Built to be the Best[®] | www.bradfordwhite.com

TANKLESS PERFORMANCE THAT LASTS.

Your customer wants tankless for good reason. They never want to run out of hot water again!

The Infiniti® GS and Infiniti® GR deliver high performance and efficiency with long-lasting reliability thanks to a robust stainless steel heat exchanger.



The Never-Ending Hot Water Your Customer Wants:

- **APPLICATION FLEXIBILITY.** Suitable for residential and commercial applications.
- **POWER to Handle high temperature and high demand application.** Cascade multiple units and 185°F maximum set point.
- **Free Standing Rack System** for time saving flexible installations
- **EASY TO INSTALL.** Built For the Pro® with convenient water, gas and vent connections.
- **BEST-IN-CLASS TECH SUPPORT** with Industry leading 24/7 tech support



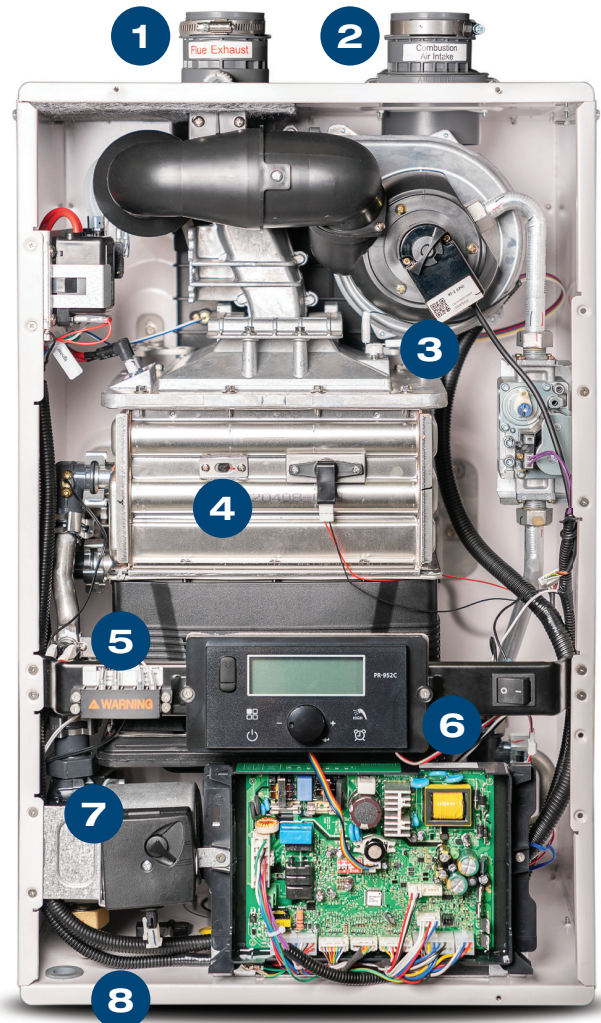
Learn More About All Infiniti Tankless Models by going to bradfordwhite.com/infinitiseries or scanning this QR Code

We've Built a Better Tankless!

The Infiniti® GS and GR have the capabilities and features you've always wanted to see on a tankless water heater, including:



- 1.** Flexible venting with PVC, CPVC, stainless steel or polypropylene up to 150 feet.
- 2.** Intake air and inlet water filters mounted outside of cabinet for easily accessible servicing.
- 3.** Precise Burner Control and Combustion System – designed for longer life and reduced dust build-up. Includes negative pressure gas valve and metal fiber burner construction
- 4.** Robust stainless steel heat exchanger for long-life and high performance.
- 5.** Terminal Block – for easier control of air handler and installation of on demand kit.
- 6.** Robust Digital Display for easier control and troubleshooting
- 7.** Built-in recirculation pump reduces total installation cost and space (Infiniti® GR)
- 8.** Advanced recirculation feature for whole home with dedicated loop, bypass valve through cold line, or inside product for faster hot water delivery




BRADFORD WHITE®
WATER HEATERS
Built to be the Best

Infiniti® GS and Infiniti® GR Specs-at-a-glance

Infiniti® GS Tankless Gas Condensing Water Heater Models

SIZING DATA

Model	Configuration	Gas Type	Max. Input		Min. Input		Turndown Ratio	Uniform Energy Factor
			MBH	kW	MBH	kW		
RTGS199N1	Standard	Natural Gas	199	58.3	13	3.8	15:1	0.96
RTGS199X1	Standard	Propane	199	58.3	13	3.8	15:1	0.96

Model	Water Connection Size	Gas Connection Size	Product Weight		Shipping Weight	
			lbs.	kg.	lbs.	kg.
RTGS199N1	3/4" NPT	3/4" NPT	78	35	89	40
RTGS199X1	3/4" NPT	3/4" NPT	78	35	89	40



DIMENSIONAL DATA

Standard Model RTGS199N1 and RTGS199X1	
Description	Size
Exhaust	2" PVC
Air Intake	2" PVC
Gas	3/4" NPT
Condensate	1/2" NPT
Hot Water Connection	3/4" NPT
Cold Water Connection	3/4" NPT
Cold Water Filter	—

Infiniti® GR Tankless Gas Condensing Water Heater Models

SIZING DATA

Model	Configuration	Gas Type	Max. Input		Min. Input		Turndown Ratio	Uniform Energy Factor
			MBH	kW	MBH	kW		
RTGR199N1	Recirculation	Natural Gas	199	58.3	18	3.8	15:1	0.96
RTGR199X1	Recirculation	Propane	199	58.3	18	3.8	15:1	0.96

Model	Water Connection Size	Gas Connection Size	Product Weight		Shipping Weight	
			lbs.	kg.	lbs.	kg.
RTGR199N1	3/4" NPT	3/4" NPT	85	38	96	44
RTGR199X1	3/4" NPT	3/4" NPT	85	38	96	44



DIMENSIONAL DATA

Recirculation Model RTGR199N1 and RTGR199X1	
Description	Size
Exhaust	2" PVC
Air Intake	2" PVC
Gas	3/4" NPT
Condensate	1/2" NPT
Hot Water Connection	3/4" NPT
Cold Water Connection	3/4" NPT
Recirculation Return Connection	3/4" NPT
Cold Water Filter	—
Recirculation Return Filter	—

Intelligent, Efficient and High-Performance **Tankless**



Infiniti® GS for Outstanding Tankless Performance,
and the **Infiniti® GR** for Even Faster Hot Water
Delivery with Built-in Recirculation Pump



- **ENDLESS SUPPLY OF HOT WATER** so no waiting for your water heater to heat back up
- **BUILT-IN RECIRCULATION PUMP** for the instant delivery of hot water to the shower or faucet (Infiniti® GR)
- **OUTSTANDING EFFICIENCY** of UEF 0.96 to Save Your Utility cost
- **ENERGYSTAR® CERTIFIED.** Rebate and Tax Credit Eligible
- **CERTIFIED GREEN PRODUCT™.** Recognized by the Green Restaurant Association.
- **COMPACT WALL-MOUNT DESIGN** allows more free floor space
- **15-YEAR RESIDENTIAL HEAT EXCHANGER WARRANTY**
- **ENVIRONMENTALLY RESPONSIBLE.** Low NOx system exceeds the most stringent NOx regulations


BRADFORD WHITE®
WATER HEATERS
Built to be the Best®

Features the Following Accessories for an Easy Installation



Part #ST1238
Outdoor Vent Kit



Part #ST1237
Pipe cover



Part #ST1239
On-Demand Sensor Kit
(Infiniti® GR only)



Part #FT1861
Cascade Cable



Part #415-55026-00
Service Valve
Kit With PRV
(Infiniti® GS only)



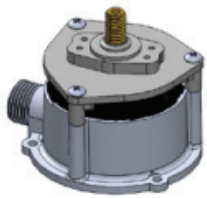
Part #415-55037-00
Service Valve Kit With
Recirc and PRV
(Infiniti® GR only)



Part #415-54353-00
ODR Crossover
Valve Kit



Part #ST1253
Non Return Valve for
PVC/CPVC
common venting



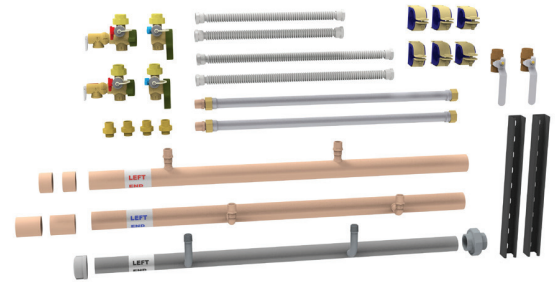
LP to NG Part #ST1147
NG to LP Part #ST1148
Field Gas Conversion Kit



Part #ST1249
Base Rack



Part #ST1250
Extension Rack



Cascade easy plumbing manifold kits
Part #P2151900 2 unit Side-by-Side
Part #P2152100 3 unit Side-by-Side
Part #P2152000 2 unit Back-to-Back
Part #P2152200 4 unit Back-to-Back

— BRADFORD WHITE IS —
**AMERICAN
STRONG**

bradfordwhite.com/infinitiseries

Products made by Bradford White are manufactured in the United States
using the finest raw materials and components from around the world.

©2025, Bradford White Corporation. All rights reserved. INFINTANK-GSGR 0625


BRADFORD WHITE®

WATER HEATERS

Built to be the Best™