

Ventilation Fans



**When your  
home breathes,  
you breathe  
easier, too.**



# When your home breathes, you breathe easier too.



## Exhaust Ventilation

removes excess moisture and odor from any room in the home, and can also provide continuous, whole-house ventilation.



## Kitchen Ventilation

expels cooking effluents from food preparation to eliminate airborne pollutants from spreading through the entire house.



## Fresh Air Systems

efficiently exchange inside air with fresh outside air, and remove airborne particulates with HEPA filtration.



## Overture™ System

is a fully automated fresh air solution that monitors and manages indoor air quality to eliminate pollutants and bring in fresh, clean air from the outside. See page 9 to learn more.

### **Broan-NuTone® can improve indoor air quality in every room of the home.**

From clearing humidity in the bathroom to removing steam and other airborne effluents in the kitchen, no company knows residential and light commercial ventilation like Broan-NuTone. After countless innovations and a commitment to indoor air quality, trust Broan-NuTone to clear up every concern.

# Why indoor air quality is important to you.

Not all homeowners recognize what contributes to poor indoor air quality, the potential effects and harm, and how to address these problems. Broan-NuTone® is here to help. For 90 years, Broan-NuTone has led the industry with residential ventilation solutions that improve indoor air quality and provide healthier home environments.



## Moisture

that is not properly ventilated can cause mildew and mold formation, potentially leading to structural and health problems. Exhaust ventilation solutions from Broan-NuTone remove humidity at the source to help maintain the optimal humidity balance of 40–60%.



## Off-gassing

from construction materials, carpeting, adhesives and synthetic materials—as well as solvents from common household cleaners—can accumulate in tightly built homes. Look to Broan-NuTone for continuous ventilation solutions that meet ASHRAE 62.2.



## Particulates

from dust, allergens, pet dander, and more can contribute to poor indoor air quality up to 100 times more polluted than outside air. A properly ventilated home creates a more enjoyable, comfortable and healthier environment.



## Cooking byproducts

can infiltrate the whole house in minutes. Grease, oils and aromas settle permanently into carpets, furniture, clothing and other surfaces. Kitchen ventilation solutions help eliminate cooking effluents for a cleaner, more comfortable and healthier environment.

- 5 Codes
- 6 Flex Series™
- 8 Flex DC Series™
- 12 QT® Series Fans
- 16 ULTRA Pro® / ULTRA Green®
- 20 SurfaceShield™
- 22 ChromaComfort®
- 24 SensoNIC®
- 28 Decorative / Recessed
- 30 LoProfile
- 32 Heater Fan/Lights
- 38 Economy Fan/Lights
- 42 Upgrade Kits/Covers
- 48 Wall Controls
- 52 Fresh In™
- 54 Utility Fans
- 58 Light Commercial
- 64 Attic Ventilation
- 66 Parts & Accessories
- 68 Specifications
- 72 Performance Curves

## America's most used and trusted residential ventilation company.

Broan-NuTone® is proud to have our American-made ventilation and home comfort and convenience products installed in 90 million homes across the country.



# Industry leadership can't be claimed. It's earned through innovation.



**Nine decades ago**, an engineer in Southeastern Wisconsin named Henry Broan had a revelation: wouldn't a built-in mechanical ventilation solution help to provide better indoor air quality in the kitchen? And so, Motordor® was conceived—the first kitchen ventilator—and a company was born. The invention of the bath fan soon followed, as the passion for improving indoor air quality continued.

**Throughout the years, Broan-NuTone® has led the industry with countless innovations.** From the first energy-efficient certified fans and range hoods, to quiet ventilation solutions that are easier than ever to install. It's because Mr. Broan knew leadership is earned and proven through a passion and commitment to finding novel solutions to real problems time and time again. This is why Broan-NuTone has taken the job of improving air quality in our homes very seriously for 90 years.

# To build a code-compliant home, understand today's ventilation requirements.

The American Society of Heating, Refrigeration and Air Conditioning Engineers set the ventilation standard for low-rise residential buildings with ASHRAE 62.2. It established the minimum standard for spot ventilation of bathrooms at 50 CFM delivered airflow at 3.0 sones or less, and specifies requirements for whole-house ventilation at a max sound rating of 1.0 sone for ventilation fans.

## Use these tables to find whole-house solutions that help meet ASHRAE 62.2.

Fan Series	Model	CFM	Sones	Page No.
ULTRA Green® Multi Speed	ZB80	80	<0.3*	18
	ZB80M	80	<0.3*	17
	ZB110	110	<0.3	18
	ZB110H	110	<0.3	17
ULTRA Green® Single Speed	XB50	50	<0.3	18
	XB80	80	<0.3*	18
	XB110	110	<0.3	18
ULTRA Pro®	RB80	80	<0.3	19
	RB110	110	0.6	19
QTXE™	QTXE080	80	0.3	14
	QTXE110	110	0.7	14
LoProfile	LP80	80	1.0	31
	AE50	50	0.5	11
Flex Series™	AE80K	80	0.7	11
	AE110	110	1.0	11
	AE110K	110	1.0	11

Fan/Light Series	Model	CFM	Sones	Page No.
ULTRA Green® Multi Speed	ZB80L1	80	<0.3*	18
	ZB80ML1	80	<0.3*	17
	ZB110L1	110	<0.3	18
	ZB110HL1	110	<0.3	17
	ZB110ML1	110	<0.3	17
ULTRA Green® Single Speed	XB50L1	50	<0.3	18
	XB80L1	80	<0.3*	18
	XB110L1	110	<0.3	18
ULTRA Pro®	XB110HL1	110	<0.3	17
	RB80L1	80	<0.3	19
Flex Series™	RB110L1	110	0.8	19
	AE80LK	80	0.7	10
	AE110LK	110	1.0	10

ENERGY STAR® fans use 70% less energy, on average, than standard models and may qualify for local utility rebates



\*With 6" duct (0.3 sones with 4" duct)

Saving energy saves tomorrow by protecting our resources. We are honored to have received the ENERGY STAR® Sustained Excellence Award.



### With CODE-KEY, select compliant ventilation solutions with confidence.

- Choose state, home size facts and user preferences
- Get recommended ventilation products instantly
- Change parameters to see a range of options
- Open a browser on any device and go—it's easy



# Flex Series.™ Take the aggravation out of installation.

Flex Series™ is about time-saving, flexible solutions for new construction or roomside retrofit. Innovative features simplify roomside installation and improve building airtightness like never before. With fresh cover designs and a full range of fans, fan/lights and sensing models, there's a Flex Series™ solution for every installation.



# Easy roomside installation. Airtight performance. LED lighting.



FoldAway® mounting ears simplify new construction and fold flat for roomside retrofits.



LED lighting offers energy efficiency and longevity. The 11-watt, 800 lumen integrated module lasts up to 25,000 hours.



TrueSeal® damper technology reduces air leakage up to 50%, and saves up to 1 HERS point and \$9 per year in operating costs.\*



EzDuct™ connector enables roomside installation without attic access. Pull the 4" duct through, attach the EzDuct™ connector and set it with one screw.

\*Compared to competitive fans; based on software calculations and analysis conducted by Broan. Testing reflects total fan housing air tightness.



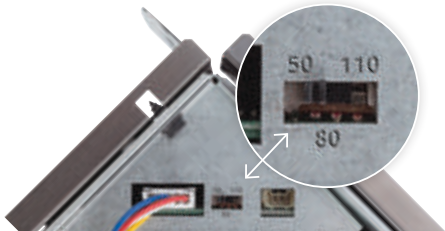
Scan or tap the code to see how Flex Series™ fans simplify installation.

## Flex DC Series™. We took Flex even further.

Flex DC Series ventilation fans provide three CFM settings accessible at the touch of a switch. You have the best solution for any installation. An energy-efficient DC motor makes it possible, all while running at less than 1.0 sone at all fan speeds.

### Features

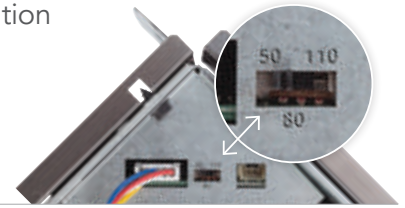
- 50% more airtight
- Select 50, 80 or 110 CFM with a switch
- Dimmable LED fan/lights
- Humidity sensing models
- Quiet operation as low as <0.3 sones
- Flange kit for a leak-free seal (sold separately)
- Enhanced energy efficiency—up to 14.7 CFM/watt



Available on select models  
Hanger Bars | Humidity Sensing | LED Lighting

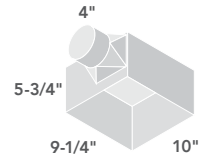
## Flex DC Series™ Simplify installation with three-way selectable CFM.

The Flex DC Series™ was built to give you what matters most. With a selectable DC motor, you can switch between 50, 80 or 110 CFM to meet any room ventilation requirement as well as ASHRAE 62.2 for spot and dwelling unit ventilation. The brushless DC motor lasts longer than standard motors and achieves 90% efficiency, saving money long after installation.



### General Features & Benefits

- Selectable DC motor enables right-sized ventilation for any room
- Quiet operation at less than 1.0 sone at all CFM speeds
- TrueSeal® damper technology creates an airtight seal from inside the housing
- 4" round duct connector compatible with any Broan duct increaser
- UL Listed for use over tub and shower when connected to a GFCI protected branch circuit
- Type IC, fits 2" x 6" and larger construction



UP TO  
**50% LESS**  
AIR LEAKAGE  
WITH TRUESEAL®  
DAMPER  
TECHNOLOGY



**AE50110DC**



**AE50110DCS**

- Sensaire™ Sense on Rise technology



**AE50110DCSL, AE50110DCL**

- Dimmable, Title 24 compliant LED lighting
- Sensaire™ Sense on Rise technology on model AE50110DCSL
- Grille pictured is AE50110DCSL



### Snap-fit Flange Kit

Installation and retrofit upgrades just got easier. Go flangeless or add the flange by simply snapping it on the side of the fan housing for a professional finish and tighter, leak-free seal.

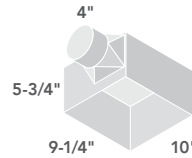
Broan Model	CFM	Sones	Light	Sensing	Duct	ENERGY STAR®	Overture® Compatible	Cover Size
AE50110DC	50-80-110	<0.3-0.4-0.9	—	—	4	Yes	Yes	12½ x 11¾
AE50110DCL	50-80-110	<0.3-0.4-0.9	11W LED	—	4	Yes	Yes	12½ x 11¾
AE50110DCS	50-80-110	<0.3-0.4-0.9	—	Humidity	4	Yes	Yes	12½ x 11¾
AE50110DCSL	50-80-110	<0.3-0.4-0.9	11W LED	Humidity	4	Yes	Yes	12½ x 11¾

ENERGY STAR® fans use 70% less energy, on average, than standard models and may qualify for local utility rebates



**General Features & Benefits**

- Detects a rapid rise in humidity
- User adjustable sensitivity control
- Easy-to-set shut-off timer: 5–60 minutes
- UL Listed for use over tub and shower when connected to a GFCI protected branch circuit
- ENERGY STAR® certified
- HVI Certified
- RD2 radiation damper accessory for Flex Series (see page 61)



**DID YOU KNOW?**

Contractors recognize the Broan-NuTone® ventilation brand above all others.

**AE80S, AE110S**

- FoldAway® mounting ears enable easy roomside installation
- Fits in 2x6 ceiling construction

**AE80SL, AE110SL**

- FoldAway® mounting ears enable easy roomside installation
- Bright, energy efficient LED Lighting
- Fits in 2x6 ceiling construction

Broan Model	CFM	Sones	Light	Sensing	Duct	ENERGY STAR®	Overture® Compatible	Cover Size
AE80S	80	0.7	—	Humidity	4	Yes	Yes	12 x 11½
AE110S	110	1.0	—	Humidity	4	Yes	Yes	12 x 11½
AE80SL	80	0.7	11W LED	Humidity	4	Yes	Yes	12½ x 11¾
AE110SL	110	1.0	11W LED	Humidity	4	Yes	Yes	12½ x 11¾

ENERGY STAR® fans use 70% less energy, on average, than standard models and may qualify for local utility rebates



**Monitor, measure and manage your indoor air quality with Overture.™**

Today's tightly built homes are models of energy efficiency. But sometimes, what you can't see requires the most attention. The Overture™ system monitors, measures and manages indoor air quality at the room level. When high levels of humidity, TVOCs, CO<sub>2</sub> and temperature are detected, Overture™ automatically starts ventilation devices to exhaust bad air and introduce fresh air.



Look for the Overture™ Badges throughout the catalog to find compatible products.

**Smart Wall Control**  
Model BIAQWC1



**Smart Room Sensor**  
Model BIAQRS1



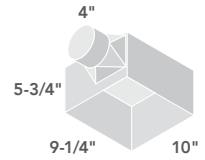
**Smart Plug**  
Model BIAQSP1



Scan to learn more about Overture™

**General Features & Benefits**

- FoldAway® mounting ears enable easy new construction and roomside replacement installations
- TrueSeal® damper technology forms a tight seal to reduce backdrafts
- EzDuct™ connector creates an air-tight seal inside the housing and enables roomside installation without attic access
- Effective ventilation clears humidity and odors
- UL Listed for use over tub and shower when connected to a GFCI protected branch circuit
- All models starting with AE are ENERGY STAR® certified



See how SurfaceShield™ kills bacteria and viruses at the touch of a switch. Scan or tap the code to learn more.



**A70L, A110L**

- Fan/Light with Incandescent E26 Base (bulb not included)



**AE80BL, AE110L**

- LED Fan/Light with 11 watt, 800 Lumens, 3000K, 80 CRI integrated module
- 25,000-hour LED for maintenance-free convenience



**AE80LK, AE110LK**

- CleanCover design stays cleaner longer
- LED Fan/Light with 11 watt, 800 Lumens, 3500K integrated module
- 25,000-hour LED for maintenance-free convenience



**AER80CCTK, AER110CCTK**

- CleanCover design stays cleaner longer
- Features integrated dimmable LED with color adjustable CCT lighting, warm (3000K), bright (3500K), cool (4000K) and daylight (5000K)
- 25,000 hour LED for maintenance-free convenience



**VVLED**

Convert your ventilation fan to a SurfaceShield™ bacteria- and virus-fighting solution.

The VVLED upgrade light is compatible with the following models: AE50110DCL, AE50110DCSL, AE80BL, AE80SL, AE110L, AEN80BL, AEN110L, AE80LK and AE110LK. See page 21 to learn more.

Broan Model	CFM	Sones	Light	Duct	ENERGY STAR®	Overture® Compatible	Cover Size
A70L*	70	2.0	E26 Base	4	No	Yes	12½ x 11½
A110L*	110	1.3	E26 Base	4	No	Yes	12½ x 11½
AE80BL	80	1.2	11W LED	4	Yes	Yes	12½ x 11¾
AE80LK	80	0.7	11W LED	4	Yes	Yes	12¼ x 12¼
AE110L	110	1.0	11W LED	4	Yes	Yes	12½ x 11¾
AE110LK	110	1.0	11W LED	4	Yes	No	12¼ x 12¼
AER80CCTK	80	0.7	11W LED	4	Yes	Yes	12¼ x 12¼
AER110CCTK	110	1.0	11W LED	4	Yes	Yes	12¼ x 12¼

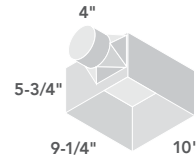
ENERGY STAR® fans use 70% less energy, on average, than standard models and may qualify for local utility rebates

\*Bulb not included



**General Features & Benefits**

- FoldAway® mounting ears enable easy new construction and roomside replacement installations
- TrueSeal® damper technology forms a tight seal to reduce backdrafts
- EzDuct™ connector creates an air-tight seal inside the housing and enables roomside installation without attic access
- Effective ventilation clears humidity and odors
- UL Listed for use over tub and shower when connected to a GFCI protected branch circuit
- All models starting with AE are ENERGY STAR® certified



**A80, A110, AE50, AE80B, AE110**



**AE80K, AE110K**

Broan Model	CFM	Sones	Duct	ENERGY STAR®	Overture® Compatible	Cover Size
A80	80	2.0	4	No	Yes	12 x 11½
A110	110	3.0	4	No	Yes	12 x 11½
AE50	50	0.5	4	Yes	Yes	12 x 11½
AE80K	80	0.7	4	Yes	Yes	12¼ x 12¼
AE80B	80	1.2	4	Yes	Yes	12 x 11½
AE110	110	1.0	4	Yes	Yes	12 x 11½
AE110K	110	1.0	4	Yes	No	12¼ x 12¼

ENERGY STAR® fans use 70% less energy, on average, than standard models and may qualify for local utility rebates

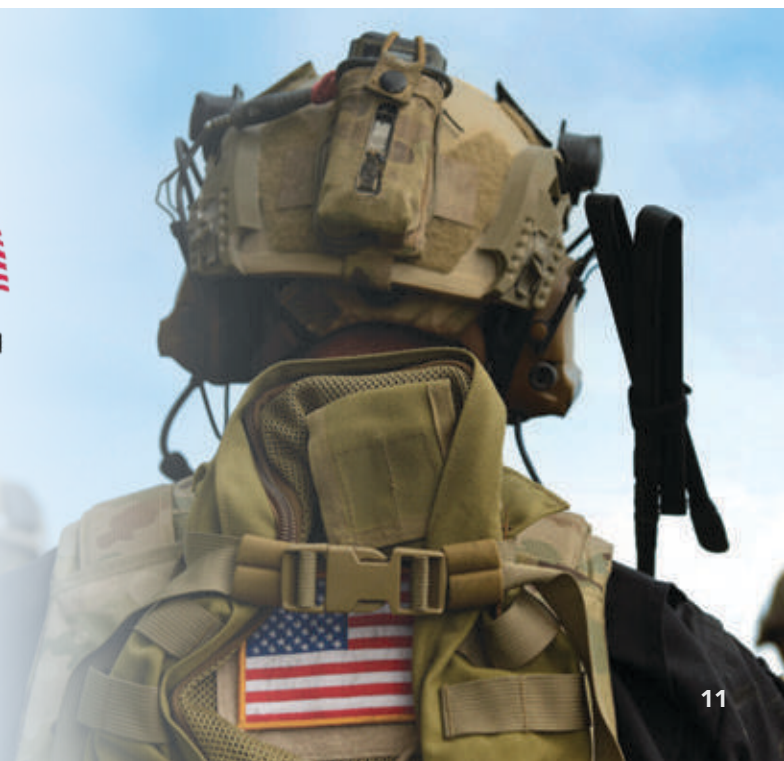


# Better Life. For Our Veterans.



We believe that Veterans, particularly those who returned wounded, deserve a better life. So we're proud to support the Homes For Our Troops foundation by donating products to help Veterans breathe fresh, clean air at home.

**Broan-NuTone.com**



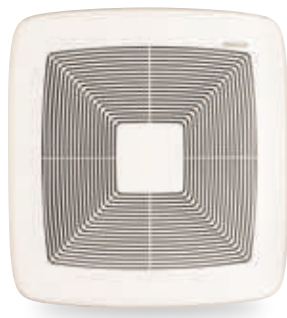
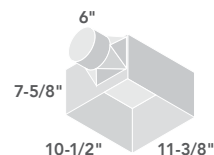
# QT® Series. Peaceful moments can be enjoyed even more.

The very quiet Broan-NuTone QT® Series is the ideal solution for any room that benefits from ventilation. Most QT® models operate at less than one sone—the sound of a quiet running refrigerator. But quiet operation doesn't mean less power. Installed properly, the QT® Series maintains full-rated airflow in real-world installations.



**General Features & Benefits**

- Selectable DC motor enables right-sized ventilation for any room
- 30% tighter housing than competitive models\*
- Flangeless housing facilitates a seamless installation
- Quiet operation at less than or equal to 0.7 sones at all CFM speeds
- TrueSeal® damper technology creates an airtight seal from inside the housing
- 6" round duct connector to reduce static pressure in ducting
- UL Listed for use over tub and shower when connected to a GFCI protected branch circuit
- Type IC, fits 2" x 8" and larger construction



**QTXE110150DC**

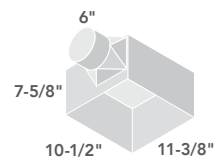


**QTXE110150DCL**

- Bright, energy-efficient LED lighting

**Sensaire™ Humidity Sensing**

- Detects a rapid rise in humidity
- User adjustable sensitivity control
- Easy-to-set shut-off timer: 5–60 minutes
- UL Listed for use over tub and shower when connected to a GFCI protected branch circuit
- ENERGY STAR® certified
- HVI Certified



**QTXE110150DCS**

- Fan cover-mounted humidity sensor for fast reaction time
- Sensaire™ Sense on Rise technology
- RDFU1 radiation damper available while supplies last with RDJUMPQ accessory
- Hanger bar system up to 24" for flexible installation in all types of construction



**QTXE110150DCSL**

- Bright, energy-efficient LED lighting
- Fan cover-mounted humidity sensor for fast reaction time
- Sensaire™ Sense on Rise technology
- RDFU1 radiation damper available while supplies last with RDJUMPQ accessory
- Hanger bar system up to 24" for flexible installation in all types of construction



Broan Model	CFM	Sones	Light	Sensing	Duct	ENERGY STAR®	Overture® Compatible	Cover Size
QTXE110150DC	110-130-150	<0.3-0.4-0.7	—	—	6	Yes	No	13¾ x 13
QTXE110150DCL	110-130-150	<0.3-0.4-0.7	18W LED	—	6	Yes	Yes	13¾ x 13
QTXE110150DCS	110-130-150	<0.3-0.4-0.7	—	Humidity	6	Yes	Yes	13¾ x 13
QTXE110150DCSL	110-130-150	<0.3-0.4-0.7	18W LED	Humidity	6	Yes	Yes	13¾ x 13

ENERGY STAR® fans use 70% less energy, on average, than standard models and may qualify for local utility rebates

\*Compared to competitive fans; based on software calculations and analysis conducted by Broan. Testing reflects total fan housing air tightness.

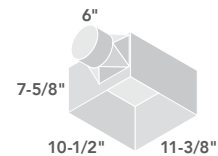


**QTXEDCH**  
**Simplify Installation with Project Packs.**

Project packs are ideal for contractors and builders who have yet to pick out the final product. With the housing for the fan sold separately from the cover and motor, contractors are able to continue with construction and not have to worry about damaging, losing or storing the product. Once all construction is complete, the purchase of a finish pack, 4 covers and 4 motor/blower wheels, can be made to add the finishing touches to the room.

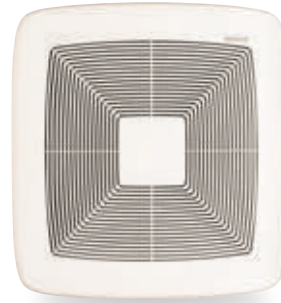
**General Features & Benefits**

- Very quiet operation 0.3 to 1.4 sones
- 80 CFM to 150 CFM
- 6" ducting for superior performance
- Hanger bar system up to 24" for flexible installation in all types of construction
- Motor engineered for continuous operation
- UL Listed for use over tub and shower when connected to a GFCI protected branch circuit
- Fits 2x8 ceiling construction
- ENERGY STAR® certified
- HVI Certified
- Radiation damper RDFQF available separately



**QTXE110S**

- Fan cover-mounted humidity sensor for fast reaction time
- Sensaire™ Sense on Rise technology
- Hanger bar system up to 24" for flexible installation in all types of construction



**QTXE080, QTXE110, QTXE150**



**RDFQF**  
**Premium Radiation Damper.**

When the air temperature passing through the damper exceeds 165°F the fusible link melts, triggering the thermal fabric to automatically close across the damper. Airflow is interrupted by a flame and heat barrier, preventing the rapid spread of fire to other areas. **Scan or tap the code to learn more.**

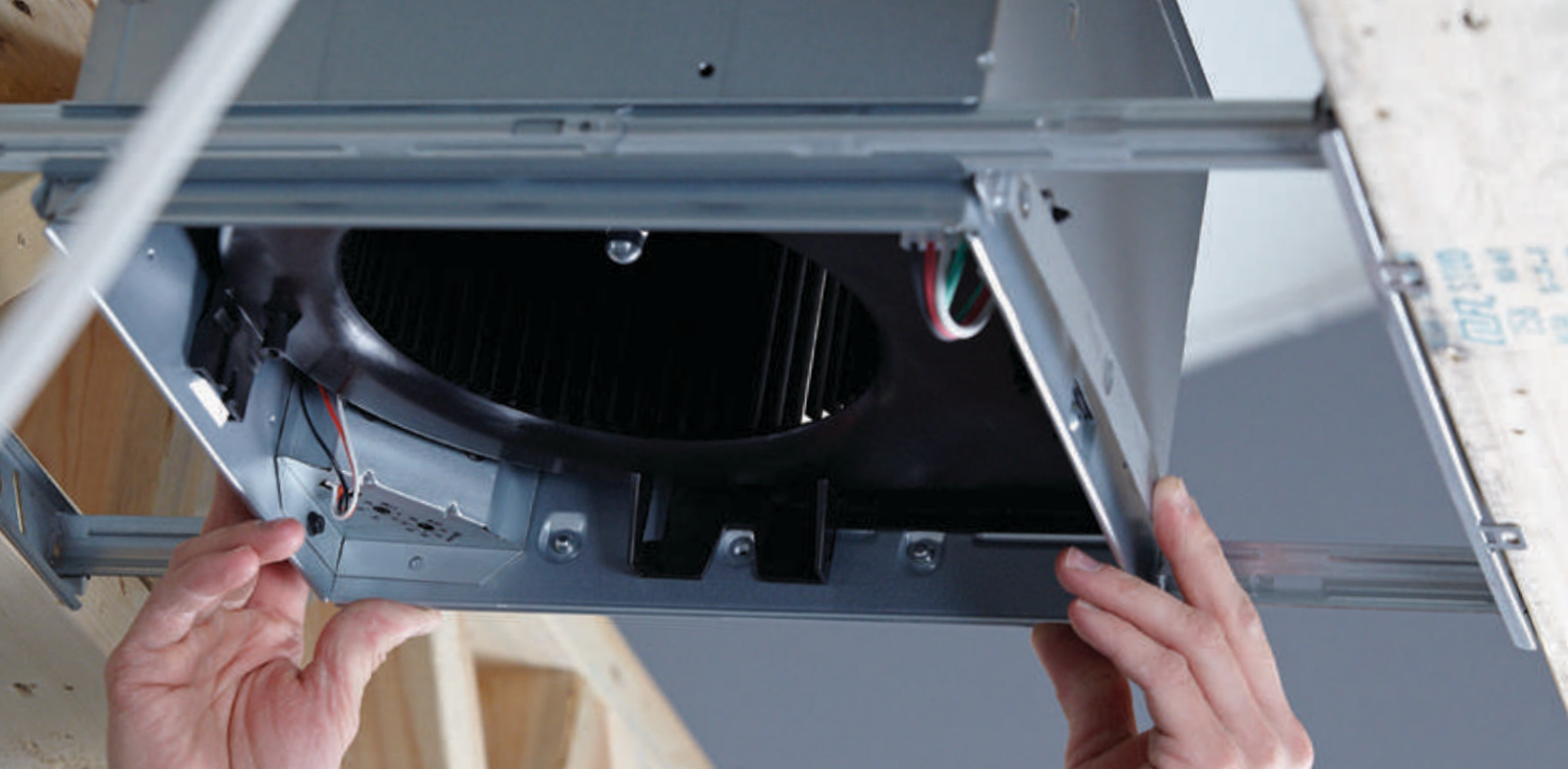


Broan Model	CFM	Sones	Duct	Sensing	ENERGY STAR®	Overture® Compatible	Broan Cover Size
QTXE110S	110	0.7	6	Humidity	Yes	Yes	13¾ x 12¾
QTXE080	80	0.3	6	—	Yes	Yes	13¾ x 13
QTXE110	110	0.7	6	—	Yes	Yes	13¾ x 13
QTXE150	150	1.4	6	—	Yes	Yes	13¾ x 13

ENERGY STAR® fans use 70% less energy, on average, than standard models and may qualify for local utility rebates







# We didn't just change one thing to make installation faster. We changed everything.

For the fastest, easiest, most universal solution for any installation, think ULTRA® Series. With a unique telescoping mounting frame that installs roomside on retro-fits and an easy-to-insert housing and blower that snap into place, you'll never have another difficult installation—no matter what's behind the drywall.

## **ULTRA Green®. The perfect solution to meet today's continuous ventilation requirements.**

Built for easy installation in either new construction or retrofit applications, the ULTRA Green® Series makes it simple to ventilate any room in the house. Exclusive ULTRA Smart™ DC Motor and Control Technology enables fans to maintain their powerful operation—even at high static pressures—and provide required air movement levels for whole-house ventilation, all while meeting spot ventilation needs on-demand. Continuous CFM levels can be precisely adjusted to meet the specific needs of each home.





**General Features & Benefits**

- HVI Certified at <0.3 sones, ULTRA Silent™ sound technology provides the quietest sound rating obtainable
- 80 or 110 CFM
- Intermittent and continuous ventilation
- ULTRA Smart™ DC Motor and Control Technology monitors CFM output and adjusts motor speed to ensure rated air movement ULTRAQuick® installation technology enables fast, easy, universal installation
- XB and ZB models feature 6" ducting 80 CFM models include an optional 6" to 4" duct reducer
- UL Listed for use over tub and shower when connected to a GFCI protected branch circuit
- Type IC
- Fits 2x8 ceiling construction
- Optional RDFU premium radiation damper kit available



**XB110HL1, ZB110HL1**



**XB110H, ZB110H**



**ZB80ML1, ZB110ML1**



**ZB80M**

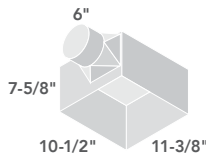


Scan the code to see how ULTRA® Series fans simplify installation.

Broan Model	CFM	Sones	Light	Sensing	Duct	ENERGY STAR®	Overture® Compatible	Cover Size
XB110H	110	<0.3	—	Humidity	6	Yes	Yes	14 x 13 <sup>1</sup> / <sub>8</sub>
XB110HL1	110	<0.3	LED	Humidity	6	Yes	Yes	13 <sup>3</sup> / <sub>4</sub> x 14 <sup>1</sup> / <sub>4</sub>
ZB110H	110	<0.3	—	Humidity	6	Yes	Yes	14 x 13 <sup>1</sup> / <sub>8</sub>
ZB110HL1	110	<0.3	LED	Humidity	6	Yes	Yes	13 <sup>3</sup> / <sub>4</sub> x 14 <sup>1</sup> / <sub>4</sub>
ZB80ML1	80	<0.3*	LED	Motion	6 Round + 6 to 4 Reducer	Yes	Yes	13 <sup>3</sup> / <sub>4</sub> x 14 <sup>1</sup> / <sub>4</sub>
ZB110ML1	110	<0.3	LED	Motion	6	Yes	Yes	13 <sup>3</sup> / <sub>4</sub> x 14 <sup>1</sup> / <sub>4</sub>
ZB80M	80	<0.3*	—	Motion	6 Round + 6 to 4 Reducer	Yes	Yes	14 x 13 <sup>1</sup> / <sub>8</sub>

ENERGY STAR® fans use 70% less energy, on average, than standard models and may qualify for local utility rebates

\*With 6" duct (with 4" duct 0.3)





**General Features & Benefits**

- HVI Certified at <0.3 sones, ULTRA Silent™ sound technology provides the quietest sound rating obtainable
- 50, 80 or 110 CFM
- Intermittent and continuous ventilation
- ULTRA Smart™ DC Motor and Control technology monitors CFM output and adjusts motor speed to ensure rated air movement ULTRAQuick® installation technology enables fast, easy, universal installation
- XB and ZB models feature 6" ducting—50 and 80 CFM models include an optional 6" to 4" duct reducer
- UL Listed for use over tub and shower when connected to a GFCI protected branch circuit
- Type IC
- Fits 2x8 ceiling construction
- Optional RDFU Premium Radiation Damper Kit available



**XB50L1, XB80L1, XB110L1, ZB80L1, ZB110L1**

- Bright, energy-efficient LED lighting

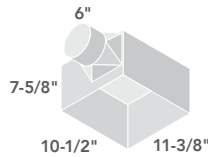


**XB50, XB80, XB110, ZB80, ZB110**

Broan Model	CFM	Sones	Light	Duct	ENERGY STAR®	Overture® Compatible	Cover Size
XB50L1	50	<0.3	LED	6 Round + 6 to 4 Reducer	Yes	Yes	13¾ x 14¼
XB80L1	80	<0.3*	LED	6 Round + 6 to 4 Reducer	Yes	Yes	13¾ x 14¼
XB110L1	110	<0.3	LED	6	Yes	Yes	13¾ x 14¼
ZB80L1	80	<0.3*	LED	6 Round + 6 to 4 Reducer	Yes	Yes	13¾ x 14¼
ZB110L1	110	<0.3	LED	6	Yes	Yes	13¾ x 14¼
XB50	50	<0.3	—	6 Round + 6 to 4 Reducer	Yes	Yes	13¾ x 13
XB80	80	<0.3*	—	6 Round + 6 to 4 Reducer	Yes	Yes	13¾ x 13
XB110	110	<0.3	—	6	Yes	Yes	13¾ x 13
ZB80	80	<0.3*	—	6 Round + 6 to 4 Reducer	Yes	Yes	13¾ x 13
ZB110	110	<0.3	—	6	Yes	Yes	13¾ x 13

ENERGY STAR® fans use 70% less energy, on average, than standard models and may qualify for local utility rebates

\*With 6" duct (with 4" duct 0.3)



**With CODE-KEY, select compliant ventilation solutions with confidence.**

- Choose state, home size facts and user preferences
- Get recommended ventilation products instantly
- Change parameters to see a range of options
- Open a browser on any device and go—it's easy



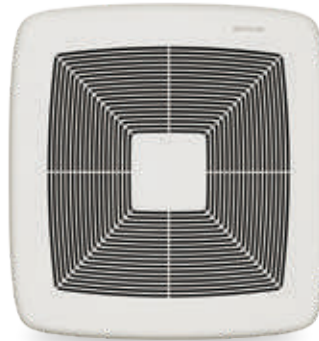


**General Features & Benefits**

- Extremely quiet operation with innovative sound reduction technologies
- QStream™ technology features airflow-smoothing baffles to reduce turbulence
- Optional RDFU Premium Radiation Damper Kit available for RB models



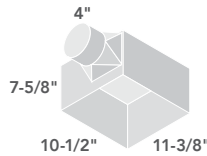
RB80L1, RB110L1



RB80, RB110

Broan Model	CFM	Sones	Light	Duct	ENERGY STAR®	Overture® Compatible	Cover Size
RB80L1	80	<0.3	LED	4	Yes	Yes	13¾ x 14¼
RB110L1	110	0.8	LED	4	Yes	Yes	13¾ x 14¼
RB80	80	<0.3	—	4	Yes	Yes	13¾ x 13
RB110	110	0.6	—	4	Yes	Yes	13¾ x 13

ENERGY STAR® fans use 70% less energy, on average, than standard models and may qualify for local utility rebates



**ULTRAQUICK®**  
INSTALLATION TECHNOLOGY

ULTRA® Ventilation Fans are engineered to be the fastest, easiest, most universal installation in remodel, retrofit or new construction—in any type of joist or truss system. Exclusive features simplify installation to save valuable time and money.

Inside/outside wiring capability provides flexible new or retrofit installation

Pre-installed screws in the mounting frame enable quick installation

Vertical positioning tabs ensure the housing is in the right place

The expandable mounting frame adjusts from 14"–24" and fits any type of joist, I-Joist or truss construction

SurfaceShield Purple Light



SurfaceShield™ WITH VYV ANTIMICROBIAL LIGHT  
Continuous Antimicrobial LED Technology



# You wipe down every surface. Now shield them all day long.

Everyday White LED Light



SurfaceShield™ with Vyv™ antimicrobial light technology is helping keep your spaces cleaner. SurfaceShield quietly removes excess humidity while killing\* viruses and fighting bacteria, mold, and fungi growth in your bathroom or other humidity prone environments. With the flip of a switch you'll spend less time cleaning and more time with the ones you love.

Shower curtains, shower walls, toilet seats, door handles, faucets and sinks are all places viruses, odor and illness causing bacteria, mold, and mildew accumulate. By preventing microbes from lingering, Broan-NuTone's SurfaceShield™ technology works doubly hard by removing airborne pollutants from the room and reducing microbial buildup.

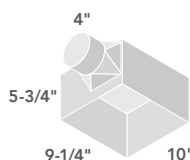
That technology is coupled with the powerful and quiet 110 CFM Roomside™ series bathroom ventilation fan to remove humidity and pollutants from the air in the room.

\*Testing on a non-enveloped virus (MS2 bacteriophage) showed a 99.985% reduction in controlled laboratory testing in 6 hours on hard surfaces. MRSA and E. coli showed 90%+ reduction in controlled laboratory testing in 24 hours on hard surfaces. Results may vary depending on the amount of light that is reaching the surfaces in the space where the product is installed and the length of time of exposure. Use of Vyv antimicrobial light is not intended to replace manual cleaning. Get more info at [vyv.tech/virus](http://vyv.tech/virus)

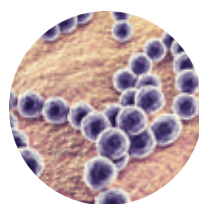


**SurfaceShield™ Anti-bacterial Fan/Light AR110LKVV, ARN110LKVV**

- EzDuct™ connector enables easy roomside installation
- TrueSeal® damper technology reduces air leakage up to 50%
- SnapFit Flange Kit offers flexible installation for new construction or retrofit upgrades
- Foldable mounting ears allow for easy installation in both new construction and room-side replacement applications
- Powerful enough for rooms up to 105 sq. ft.
- Brighter white covers blend in to match most common ceiling paint
- Corrosion resistant galvanized steel housing stands up to moisture
- Permanently lubricated AC motor engineered for continuous operation



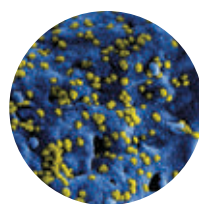
Broan Model	NuTone Model	CFM	Sones	Light	Duct	Overture® Compatible	Cover Size
AR110LKVV	ARN110LKVV	110	1.0	LED	4	Yes	12¼ x 12¼
FG1000VV	—	—	—	LED	—	—	12¼ x 12¼
VVLED	—	—	—	LED	—	—	—



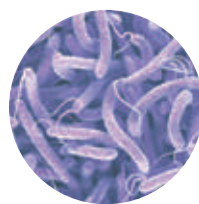
Gram Positive Bacteria



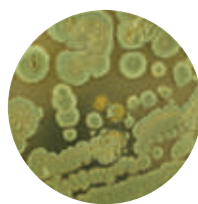
Yeast



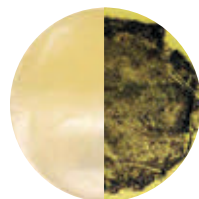
Virus



Gram Negative Bacteria



Fungi



Petri dish without and with SurfaceShield™ protection.

**Turn your existing fan/light into a SurfaceShield™ anti-bacterial solution and virus-killing solution.**

With an upgrade kit or LED module, many Broan-NuTone® fan/lights can be converted into a SurfaceShield™ solution in a matter of minutes. Both are compatible with certain legacy Broan® or NuTone InVent®, Flex Series™, or Roomside Series fan/light.



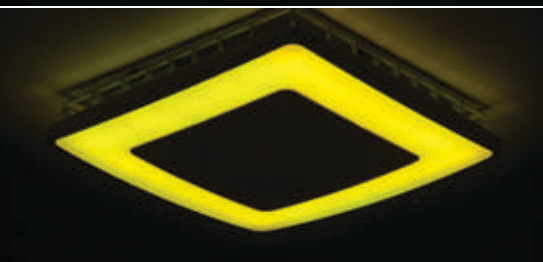
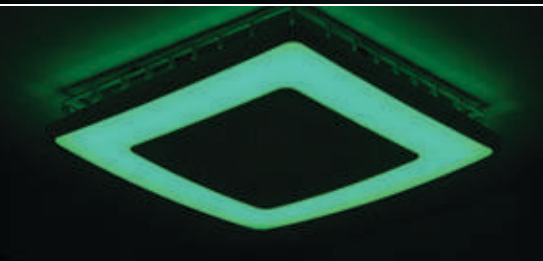
**Upgrade Fan Cover FG1000VV**

- CleanCover® stays cleaner longer with less louvers to trap dust and dirt
- Two lighting modes: an everyday LED white light perfect for task lighting and the SurfaceShield™ continuous antibacterial mode
- No drywall or additional wiring work required. Plugs directly into existing lighting connection
- Compatible with existing ventilation fan housing dimensions of 9¼" x 10" (lighted fans only)



**LED Module VVLED**

- Replace the LED lighting module in your existing fan/light
- Two lighting modes: an everyday LED white light perfect for task lighting and the SurfaceShield™ continuous antibacterial mode



# ChromaComfort® Color the way you live.

Experience greater ambience in your home. The ChromaComfort® fan combines colorful LED lighting options, superior ventilation, and quiet operation to create a colorful experience for any room of your house. Control light settings, brightness, timers, and fan speed all at the touch of a button.

## Choose from 24 different hues to fit your aesthetic mood.

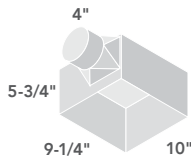
The uniquely-designed, multi-color LED chroma light features dimmable LEDs so you can create any color ambience and adjust brightness levels.



### SPK110RGL, SPKN110RGL

- Enjoy crisp, bold sound with a built-in Sensonic™ Stereo Bluetooth® speaker
- Create your own personal experience with 24 selectable colors via the included wall control or over 16 million choices on the free smartphone app
- Brilliant lighting controlled with included wireless wall control or app
- Continuous color transitions
- Bluetooth® wireless technology for app connection
- Room-side installation means no attic access required

Broan Model	NuTone Model	CFM	Sones	Light	Duct	ENERGY STAR®	Overture® Compatible	Cover Size	Sensonic™ Speaker
SPK110RGL	SPKN110RGL	110	1.5	Integrated RGL LED	4	No	Yes	13¼ x 13¼	Yes



### Remote control with the ChromaComfort™ app

Use the included multi-function wall control or download the free ChromaComfort™ app and connect to Bluetooth® wireless technology to easily adjust light settings, set timers, control the fan, and customize colors.



APPLE® is a registered trademark of Apple Inc.  
 Google Play and the Google Play logo are trademarks of Google LLC.



SENSONIC®  
YOUR MUSIC OUT OF SIGHT

# Your music, out of sight.

## Ventilation for the music fan.

Unlike wireless speakers that require counter space, Sensonic® speakers with Bluetooth® wireless technology fill your room with rich sound from above. From hard rock to news talk, play any audio through the dual high-fidelity speakers and enjoy entertainment and privacy at the touch of a button.





**SPK110**

- Dual high-fidelity Sensonic® speakers
- Brilliant audio performance concealed behind your fan cover
- Play any audio through most Bluetooth® enabled devices
- Effective, extremely quiet ventilation clears humidity and odors quickly
- UL Listed for use over tub and shower when connected to a GFCI protected branch circuit
- Type IC for use in direct contact with thermal insulation
- Fits 2x8 ceiling construction
- Includes unique spacer for easy I-joint mounting
- ENERGY STAR® certified



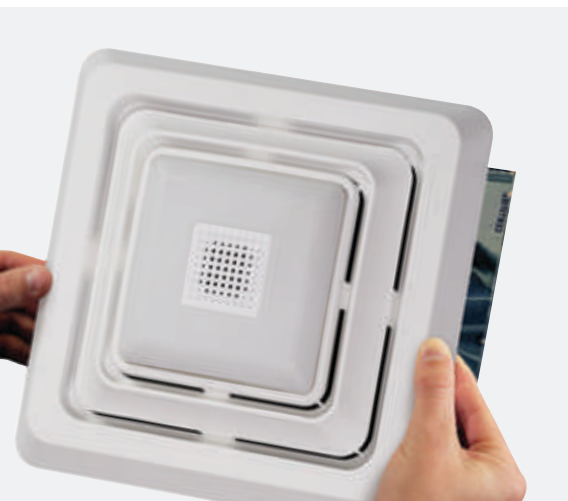
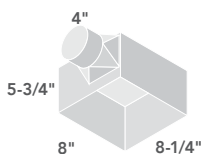
**SPK80L**

- High-fidelity Sensonic® speaker
- 80 CFM
- 2.5 sones
- Bright, energy-efficient LED light
- Most common bath fan size—easy DIY project
- Tapered, polymeric 4 in. round duct fitting for easy, positive duct connection and no metallic clatter
- UL Listed for use over a bathtub or shower when connected to a GFCI-protected branch circuit to provide more direct ventilation (ceiling mount only)
- Bright white covers match most common ceiling paint
- Corrosion-resistant galvanized steel housing stands up to moisture
- Permanently lubricated AC motor engineered for continuous operation

**SPK80NL**

Broan Model	NuTone Model	CFM	Sones	Light	Duct	ENERGY STAR®	Overture® Compatible	Broan Cover Size	NuTone Cover Size
SPK110	—	110	1.0	—	4	Yes	Yes	14 x 13	—
SPK80L	SPK80NL	80	2.5	LED	4	No	Yes	9¾ x 10¼	9¾ x 11
FG800SPKS (upgrade cover)	FG800SPKNS (upgrade cover)	—	—	LED	—	—	—	9¾ x 10¼	9¾ x 11
FG800SPK (upgrade cover 4-pack)	FG800SPKN (upgrade cover 4-pack)	—	—	LED	—	—	—	9¾ x 10¼	9¾ x 11

ENERGY STAR® fans use 70% less energy, on average, than standard models and may qualify for local utility rebates



**Upgrade Fan Covers  
FG800SPKS | FG800SPKNS\*\***

In just minutes, upgrade your classic or legacy bath fan models with Bluetooth® wireless speaker capability and bright, energy-efficient LED lighting.

**Visit [Broan-NuTone.com](http://Broan-NuTone.com) for the list of compatible models.**

\*\*While supplies last



**Scan or tap the code to see installation. No drywall work or extra wiring required. See page 45 for more information.**

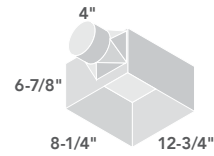
# Decorative ventilation. Draw fresh air into any room in the home—beautifully.

Imagine a fan/light combination fixture that unobtrusively blends into the ceiling. Or a statement fan/light with a stunning LED perimeter glow that showcases your unique décor. Our decorative series provides the necessary ventilation, all while meeting your decorating challenges without compromising your style.



**General Features & Benefits**

- High efficiency centrifugal fan
- 70 CFM or 50–80 CFM, see table below
- Trim matches designs of major recessed light manufacturers
- Put multiple units in larger rooms
- All models UL Listed for use over tub and shower when connected to a GFCI protected branch circuit
- 6 $\frac{7}{8}$ " high housing appropriate for new construction and 2" x 8" ceiling joists
- 4" round duct connector
- Wall control switches available, see pages 48–51
- Type IC, sealed housing
- Not for use over cooking surfaces



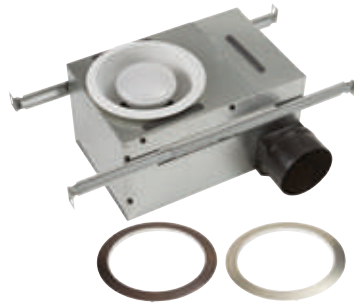
**744, 744NT, 744LED**

- 744LED includes 9.5 watt, GU24 based LED bulb
- 744 and 744NT require PAR30L or PAR30LN type bulbs (not included). Both products use a standard E26 base (R30 or BR30 for standard applications)



**744RNL**

- Selectable speeds of 50–80 CFM
- Quiet operation of 0.3 and 2.0 sones
- E26 LED bulb included
- Adjustable brackets to make installation easier
- ENERGY STAR® certified
- Choose bronze, nickel or white trim rings



**744L**

- White trim ring included
- Selectable CFM with speeds of 50 or 80 CFM
- Quiet operation of 0.3 sones and 2.0 sones
- Matches most recessed lights to blend in seamlessly
- Plug-in permanently lubricated motor
- Rugged galvanized steel construction
- Adjustable mounting brackets for ease of installation
- UL listed for use over bathtubs and showers when connected to a GFCI protected branch circuit
- UL listed for use in insulated ceilings (Type IC)

Broan Model	NuTone Model	CFM	Sones	Light	Duct	ENERGY STAR®	Overture® Compatible	Cover Size
744	744NT	70	1.5	75W	4	No	Yes	7 $\frac{3}{8}$ Dia
744LED	—	70	1.5	9.5W LED	4	Yes	Yes	7 $\frac{3}{8}$ Dia
744L	—	50–80	0.3–2.0	75W	4	No	Yes	7 $\frac{3}{8}$ Dia
—	744RNL	50–80	0.3–2.0	75W	4	Yes	Yes	7 $\frac{3}{8}$ Dia

ENERGY STAR® fans use 70% less energy, on average, than standard models and may qualify for local utility rebates



Scan or tap the code to see the 744RNL installation video.



# Ventilation can be beautiful, as well as functional.

It might look like an attractive lighting fixture, but a decorative solution from Broan-NuTone brings powerful ventilation into any room—beautifully. Choose from styles and finishes that complement fixtures, finishes and hardware while delivering the ventilation power you need. It really is a breath of fresh air.



**General Features & Benefits**

- Dimmable integrated LED module (except on 770RLTK/770RNLTk)
- Sturdy, easy, four-point mounting directly to the joist
- Motor engineered for continuous operation
- Rugged, galvanized steel construction



**AER110SLW, AERN110SLW, AER80LWH, AERN80LWH**

- Low-profile designer style fan cover
- AER110SLW and AERN110SLW have humidity sensing capabilities to rapidly remove moisture
- AER110SLW and AERN110SLW are UL listed for use in insulated ceilings (Type IC)
- All models except AR80LWH are ENERGY STAR® Certified



**AER110LBN**

- White fan covers complements any décor
- Fits in 2x6 ceiling construction
- 4" duct / E26 base lighting
- Designed to fit the space of a heater/fan/light
- UL listed for use over tub and shower when installed in a GFCI protected circuit



**AR80MB**

- Matte black decorative luminaire provides a distinctive accent
- Room-side retrofit install with EzDuct™ connector—no attic access required
- TrueSeal™ Damper reduces air leakage up to 50%
- Foldable mounting ears enable easy installation—new construction or retrofit
- AC motor engineered for continuous operation

Broan Model	NuTone Model	CFM	Sones	Light	Humidity Sensing	Duct	ENERGY STAR®	Overture® Compatible	Cover Size
AER110SLW	AERN110SLW	110	1.5	16W LED	Yes	4	Yes	Yes	15 Dia
AER80LWH	AERN80LWH	80	0.8	16W LED	No	4	Yes	Yes	15 Dia
AER110LBN	—	110	1.5	16W LED	No	4	Yes	Yes	15 Dia
AR80MB	—	80	1.0	16W LED	No	4	No	No	15 Dia

ENERGY STAR® fans use 70% less energy, on average, than standard models and may qualify for local utility rebates



**770RLTK, 770RNLTk**

- Includes two easy to change trim kits to match any décor, brushed nickel or brushed bronze
- Drywall cut completely covered with included adaptor plate
- Rugged, 26-gage galvanized steel construction
- Sturdy key-holed mounting brackets for quick and accurate installation
- 60 watt maximum, A19 type, E26 bulb or energy efficient equivalent (bulb not included)
- Not to be installed over a bathtub or shower enclosure
- UL listed for use in insulated ceilings (Type IC)

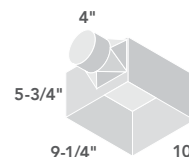


**AER110LTK, AERN110LTK**

- Low-profile designer style fan cover
- Includes three easy-to-change trim kits to match any décor: white, brushed nickel or brushed bronze
- Dimmable integrated LED module
- Sturdy, easy, four-point mounting directly to the joist
- Motor engineered for continuous operation
- Rugged, galvanized steel construction
- ENERGY STAR® Certified
- UL listed for use in insulated ceilings (Type IC)

Broan Model	NuTone Model	CFM	Sones	Light	Duct	ENERGY STAR®	Overture® Compatible	Cover Size
AER110LTK	AERN110LTK	110	1.5	16W LED	4	Yes	Yes	12 x 12
770RLTK	770RNLTk	80	2.5	E26 Base	4	No	Yes	13¾ Dia

ENERGY STAR® fans use 70% less energy, on average, than standard models and may qualify for local utility rebates



# Whether wall or ceiling mount, LoProfile is the right fan for a tight fit.

For some installations, conventional ventilation simply won't fit. Where multi-family applications require it, the LoProfile fan is narrow enough to be installed in a wall between 2x4 studs. If plumbing or electrical obstructions are found behind the drywall in ceiling remodel applications, the fan still fits without having to move anything. That way, any room can have powerful, quiet, efficient ventilation.



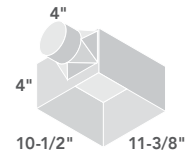
Narrow enough to be installed in a wall between 2x4 studs



LP50100DC.  
Selectable CFM with speeds of 50-80-100.

**General Features (LP80, LP110, LP50100DC)**

- Fits in 2x4 ceiling or wall construction
- >50 CFM at 0.25" static pressure meets ASHRAE 62.2 local ventilation requirements (with 4" oval duct or 3" round duct)
- Efficient operation lowers utility bills
- Ideal for multi-family applications
- Compatible with RDF1 Premium Radiation Damper (LP50100DC compatible with RDF2 Premium Radiation Damper)
- Project packs available
- 80 CFM with 4" duct ensures ample air movement; 70 CFM with 3" duct reducer
- 4" oval or 3" round duct connection for installation flexibility (LP110 and LP50100DC come with 4" duct only)



**LP50100DCF  
Fan Finish Pack**  
Broan® LoProfile series housing pack, 50-80-100 Selectable CFM, ENERGY STAR®



**LP80, LP110, LP50100DC**

- Selectable CFM (LP50100DC only)
- May be used in compliance with Title 24
- TrueSeal® damper technology creates an airtight seal from inside the housing
- Maintains constant CFM to higher static pressure over the competition (LP50100DC only)
- UL Listed for use over tub or shower when connected to a GFCI protected branch circuit
- May be used with a radiation damper in multi-family homes
- Fits 2x4 wall or ceiling installation

Broan Model	CFM	Sones	Duct	ENERGY STAR®	Overture® Compatible	Broan Cover Size
LP80	80	1.0	4 Oval or 3 Round	Yes	Yes	14 x 13
LP110	110	1.5	4 Oval	Yes	No	14 x 13
LP50100DC	50-80-100	<0.3-0.7-1.2	4 Oval	Yes	No	14 x 13

ENERGY STAR® fans use 70% less energy, on average, than standard models and may qualify for local utility rebates



**LPDCH Housing Pack**  
Broan® LoProfile Series Housing Pack, 50-80-100 Selectable CFM, ENERGY STAR®



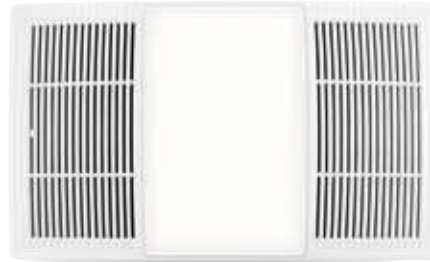
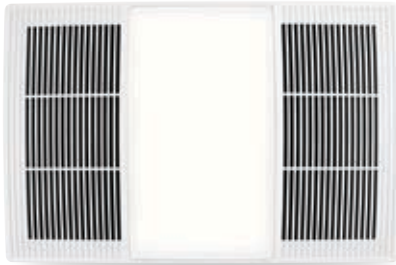
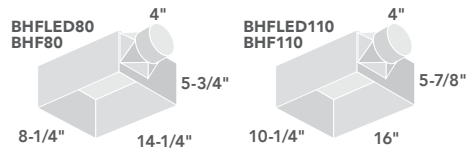


## **Heater/Fan Solutions. Get instant heat, right when you need it. Exactly where you want it.**

No matter where you live, there's certainly one room you never want to be chilly—the bathroom. Whether it's taking a morning shower, or relaxing in a whirlpool at the end of a long day, your family appreciates a warm, comfortable bathroom. Instead of waiting for the whole house to heat, get powerful heating, light and ventilation at the touch of a switch. Our heater fan/lights provide instant heat to quickly warm up the room, quiet ventilation to remove excess humidity, and convenient light. Operate each feature separately or simultaneously—no furnace required.

**General Features & Benefits**

- Dimmable LED lighting with adjustable color temperature on FLED models
- Bright white fan cover matches any decor
- Quiet operation
- Quick and flexible installation for all types of construction



**PowerHeat™ Series BHFLED80, BHFLED110**

- Heater/Fan/Light  
Heater/Fan, 14-amp circuit acceptable
- Features integrated dimmable LED with color adjustable CCT lighting; warm (2700K), bright (3500K), and daylight (5000K)
- LED dimmable lighting may be used as a nightlight (dimmer switch is not included)

**PowerHeat™ Series BHF80, BHF110**

- Heater/Fan  
14-amp circuit acceptable



**BHFLED80F Finish Pack**

- Features integrated dimmable LED with color adjustable CCT lighting; warm (2700K), bright (3500K), and daylight (5000K)
- LED dimmable lighting may be used as a nightlight (dimmer switch is not included)

**BHFLED80H Housing Pack**

- Broan PowerHeat Series Housing pack, 80 CFM

Broan Model	CFM	Sones	Light	Heater Watts	Duct	ENERGY STAR®	Cover Size
BHFLED110	110	2.0	Dimmable CCT LED	1500	4	No	11¾ x 17¾
BHFLED80	80	1.5	Dimmable CCT LED	1300	4	No	9¾ x 16¼
BHFLED80H	80	1.5	Dimmable CCT LED	1300	4	No	—
BHFLED80F	80	—	Dimmable CCT LED	1300	4	No	16¼ x 9¾
BHF110	110	2.0	—	1500	4	No	11¾ x 17¾
BHF80	80	1.5	—	1300	4	No	9¾ x 16¼

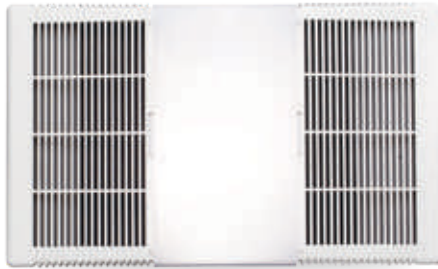
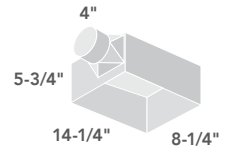
ENERGY STAR® fans use 70% less energy, on average, than standard models and may qualify for local utility rebates



Scan or tap to learn more about the Broan® PowerHeat™ LED Heater Exhaust Fan with CCT LED Lighting.

**General Features & Benefits**

- Bright white fan cover matches any decor
- 1300-watt heater for instant heat when you want it
- Rugged galvanized steel housing stands up to moisture
- Automatic-reset thermal protection
- Fan, light and heater can operate independently
- Type IC
- Fits in 2x6 ceiling construction
- Two- or three-function wall controls are available separately (see guide on pages 48–51)



**765H80L**

- Motor engineered for continuous operation

**General Features & Benefits**

- Powerful ventilation
- Extra-quiet operation
- Bright ceiling light
- Convenient night light
- White fan cover
- 1500 watts of powerful heat
- Includes a four-function wall switch
- Fits 2x8 ceiling construction



**QT9093WH**

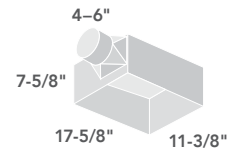


**9093WH**

NuTone Model	CFM	Sones	Light/Night Light	Heater Watts	Duct	Cover Size
765H80L	80	2.0	14W LED	1300	4	10 <sup>3</sup> / <sub>8</sub> x 16 <sup>3</sup> / <sub>4</sub>
QT9093WH	110	4.0	100W/7W	1500	4	15 <sup>3</sup> / <sub>8</sub> Dia
9093WH	70	3.5	100W/7W	1500	4	15 <sup>3</sup> / <sub>8</sub> Dia

**General Features**

- Efficient PowerHeat™ heater design
- Choose standard E26 base (2, 60 watt) lighting (bulbs not included) or energy-efficient 36 watt GU24 fluorescent (bulbs included)
- Fan motor is engineered for continuous operation
- HVI Certified
- Type IC
- Requires a dedicated 20 amp circuit
- Switches sold separately (see guide on pages 48–51)
- 7 watt night-light (bulb not included)



**QTX110HL**



**765H110L**

- 1500-watt heater with 360° directionally-adjustable design so heat ends up exactly where you want it
- Bright white fan cover matches any decor
- Select-your-bulb capacity and type (bulb not included)
- Fits in 2x6 ceiling construction
- Rugged galvanized steel housing stands up to moisture
- Motor engineered for continuous operation

Broan Model	NuTone Model	CFM	Sones	Light/Night Light	Heater Watts	Duct	Cover Size
QTX110HL	—	110	0.9	120W/7W	1500	6	15 x 20
—	765H110L	110	2.0	100W	1500	4	11½ x 17½

**Tired of your dirty, discolored old fan cover?  
Upgrade your look in 5 minutes.**

Broan-NuTone® made upgrading your bath ventilation fan easier than ever. Our convenient upgrades enable you to put a fresh face on an old fan. See pages 42–47.

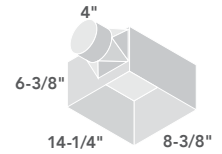


Is your fan ready for a new look?  
Scan or tap the code to see the complete compatibility cross-reference guide at [Broan-NuTone.com](http://Broan-NuTone.com)



**General Features & Benefits**

- Quiet, highly efficient blower wheels
- Dampers prevent backdrafts and eliminate mechanical noise
- 4" round duct connectors with tapered sleeves simplify ducting
- Fan and heater can operate independently
- Attractive white fan covers
- Compact steel housings with adjustable mounting brackets with keyhole slots that span up to 24"
- 250 watt R40 or BR40 size infrared bulbs (not included)
- Type IC, UL Listed for 60°C wiring (retrofits)



**162, 9417DN While supplies last**

- One-Bulb Heater/Fan



**164, 9427P While supplies last**

- Two-Bulb Heater/Fan, Two-function control

**General Features & Benefits**

- Infrared bulbs deliver energy-saving warmth
- Get instant comfort in the bathroom without turning up the central thermostat
- 250 watt R40/BR40 size infrared bulbs (not included)
- Attractive, white fan covers
- Compact steel housings
- Adjustable mounting brackets with keyhole slots span up to 24"



**161, 9412D While supplies last**

- One-Bulb Heater, UL Listed for 75°C wiring



**163, 9422P While supplies last**

- Two-Bulb Heater, Type IC

Broan Model	NuTone Model	CFM	Sones	Light	Heater Watts	Duct	Cover Size
162*	9417DN**	70	4.0	250W Infrared	250*	4	10¼ x 10¼
161**	9412D**	—	—	250W Infrared	250	—	10¼ x 10¼
164*	9427P**	70	4.0	500W Infrared	500*	4	10¼ x 15½
163**	9422P**	—	—	500W Infrared	500	—	10¼ x 15½

\*Ventilation Fan/Bulb Heater versions

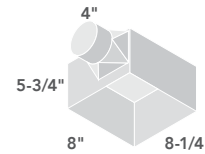
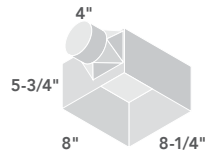
\*\*While supplies last



# Economy Fan/Lights. A well ventilated room is a healthier room.

Keeping every room in your home fresh is easy and economical. That's why Broan-NuTone® engineers a ventilation solution to fit every room and budget. Consider a style, finish or shape that complements your room décor. Rest assured, if you're concerned about saving money and energy, our bath fans are the perfect fit for your room.



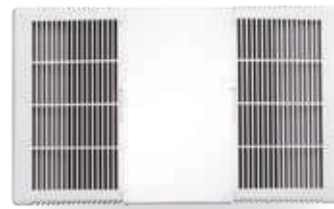


**678, 679, HD80L**

- White, fan cover complements any décor
- Fits in 2x6 ceiling construction
- 4" duct / E26 base lighting
- HD80L is designed for continuous operation
- Project packs available for some models
- UL listed for use over tub and shower when installed in a GFCI protected circuit
- HVI Certified

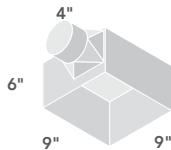
**763, 763N, HB80RL**

- White, fan cover complements any décor
- Fits in 2x6 ceiling construction
- 4" duct / E26 base lighting
- HB80RL is designed for continuous operation
- Project packs available for some models
- UL listed for use over tub and shower when installed in a GFCI protected circuit
- HVI Certified



**750, 8664RP**

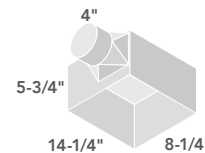
- Round design eliminates squaring with walls
- Fits in 2x6 ceiling construction
- 4" duct / E26 base lighting
- 750 feature a regular light and nightlight
- UL listed for use over tub and shower when installed in a GFCI protected circuit
- HVI Certified



**696 While supplies last**

- White fan covers complements any décor
- Fits in 2x6 ceiling construction
- 4" duct / E26 base lighting
- Designed to fit the space of a heater/fan/light
- UL listed for use over tub and shower when installed in a GFCI protected circuit

**668RP**



Broan Model	NuTone Model	CFM	Sones	Light/Night Light	Duct	Overture® Compatible	Broan Cover Size	NuTone Cover Size
—	668RP	70	4.0	E26 Base	4	Yes	—	9 <sup>7</sup> / <sub>8</sub> x 16 <sup>1</sup> / <sub>4</sub>
696**	—	100	4.5	E26 Base	4	Yes	10 <sup>5</sup> / <sub>8</sub> x 16 <sup>3</sup> / <sub>4</sub>	—
750	—	100	5.0	100W / 7W Nightlight	4	Yes	15 Dia	—
—	8664RP	100	5.0	100W	4	Yes	15 Dia	15 Dia
678	763, 763N	50	2.5	E26 Base	4	Yes	10 <sup>5</sup> / <sub>8</sub> x 11 <sup>1</sup> / <sub>8</sub>	10 <sup>3</sup> / <sub>4</sub> x 12
HD80L	HB80RL	80	2.5	100W Incandescent	4	Yes	10 <sup>5</sup> / <sub>8</sub> x 11 <sup>1</sup> / <sub>8</sub>	10 <sup>3</sup> / <sub>4</sub> x 12
679	—	70	3.5	100W incandescent	4	No	10 <sup>5</sup> / <sub>8</sub> x 11 <sup>1</sup> / <sub>8</sub>	—

\*\*While supplies last





**671, 688**

- White fan cover complements any décor
- Fits 2x4 ceiling construction
- 3" duct
- Metal fan cover kits available (sold separately)
- Project packs available for most models
- UL listed for use over tub and shower when installed in a GFCI protected circuit
- HVI Certified



**696N**

- White fan cover complements any décor
- Fits 2x4 ceiling construction
- 3" duct
- Metal fan cover kits available (sold separately)
- Project packs available for most models
- UL listed for use over tub and shower when installed in a GFCI protected circuit
- HVI Certified



**6884H**

**New housing pack for 688.**

The 6884H housing pack consists of 18 housings with 4" duct connectors attached.

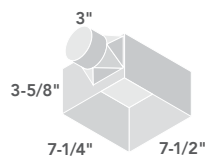
Project packs are ideal for contractors and builders who have yet to pick out the final product.



**E050, E070**

- White fan cover complements any décor
- Fits 2x4 ceiling construction
- 3" duct
- Metal fan cover kits available (sold separately)
- Project packs available
- UL listed for use over tub and shower when installed in a GFCI protected circuit
- HVI Certified

Broan Model	NuTone Model	CFM	Sones	Duct	Overture® Compatible	Broan Cover Size	NuTone Cover Size
671	—	70	6.0	3	No	9¼ x 9	—
688	696N	50	4.0	3	Yes	9¼ x 9	9½ x 8¼
E050	—	50	2.5	3	Yes	9¾ x 9¼	—
E070	—	70	4.0	3	Yes	9¾ x 9¼	—



**Ductless ventilation made simple**

Ductless Bathroom Exhaust Fan with snap-in mounting and replaceable charcoal filter processes air to eliminate odors where ductwork is impossible or impractical. It is an easy to install solution for half baths or where humidity isn't a concern. Included is a long lasting, easy to replace charcoal filter. The easy snap-in mounting makes for a fast and simple installation.

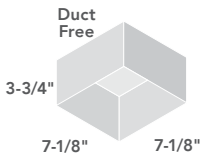


682



97009563 filter for 682, S97009563 filter for 682NT

Broan Model	Duct	Cover Size
682	Duct-free	8½ x 8½



Scan to join Broan-NuTone in supporting severely wounded veterans and their families.



# Better Life. For Our Veterans.

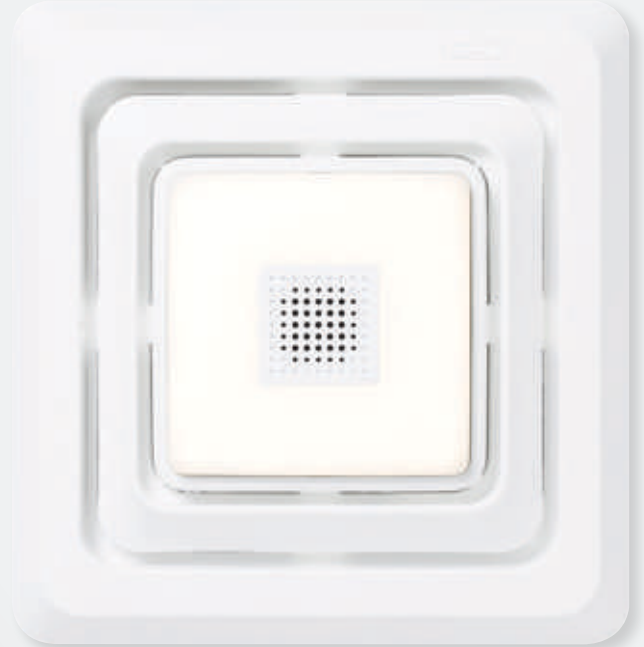


We believe that Veterans who have risked their lives daily and return from service severely wounded deserve a better life and a home that meets their physical needs. As a result, we are pleased to support the **Gary Sinise Foundation** and their **R.I.S.E. Program**, which builds specially adapted smart homes that serve to restore independence and support the empowerment of these Veterans and their families. At Broan-NuTone, we are proud to donate our products to help improve the air for Veterans so they breathe fresh, clean air in their new forever home. **Broan-NuTone.com**





OLD



NEW

# Fan upgrade kits. If you have 5 minutes, it's easy to make a tired old fan new again.

Broan-NuTone® made upgrading your bath ventilation fan easier than ever. In a matter of minutes, our convenient kits enable you to put a fresh face on a reliable fan, add lighting, a Bluetooth® wireless speaker, or even a performance kit to reduce sound by up to 50%. Upgrade fan covers don't require any tools for installation. For performance kits, all you need is a flat head screwdriver. It's another fresh idea for fresher air.



No drywall cutting



No drywall patching



Plug-in upgrade



No wiring



No tools



**SURFACESHIELD™ FG1000VV**

- SurfaceShield™ LED light powered by Vyv™ prevents bacteria, mold, and fungi growth within your room
- SurfaceShield™ technology combined with Broan's powerful ventilation is an effective one, two punch to kill\* viruses and prevent the growth of bacteria, mold, and fungi within your room
- Bright white finish matches most white ceiling paint
- Quickly and easily installs in under 5 minutes
- No cutting required—covers existing drywall cuts
- No additional wiring needed, plugs directly into existing lighting connection
- Compatible with existing ventilation fan housing dimensions of 9¼" x 10" (lighted fans only)
- Works with certain legacy Broan or NuTone InVent® Flex Series™, or Roomside Series lighted exhaust fans
- NOTE: Due to certain State regulations this product is not available in Indiana and Hawaii.
- Fan cover dimensions: 12¼" x 12¼"



**SURFACESHIELD™ LED MODULE VVLED**

- The VVLED upgrade light module is compatible with the following fan models: AE80BL, AEN80BL, AEN80L, AE110L, AEN110L, AE80LK, AE110LK, AE50110DCL, AE50110DCSL
- SurfaceShield™ technology combined with Broan's powerful ventilation is an effective one, two punch to kill\* viruses and prevent the growth of bacteria, mold, and fungi within your room
- Quickly and easily installs in under 5 minutes

For a full list of SurfaceShield™ compatible models scan or tap the code.

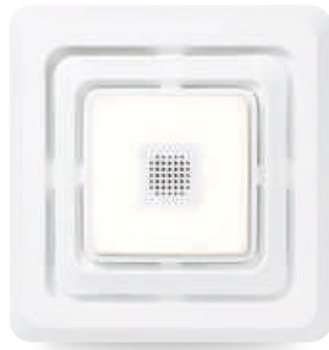


**CHROMACOMFORT™ FG600RGB**

- Quickly and easily installs in under 5 minutes
- Customizable, color changing LED lighting and Bluetooth® wireless speaker to play your favorite music, podcast or news
- No additional wiring needed. Quick-connect plug allows you to upgrade without new wiring, even if the existing cover doesn't have a light
- Fan cover dimensions: 10¼" x 9¾"

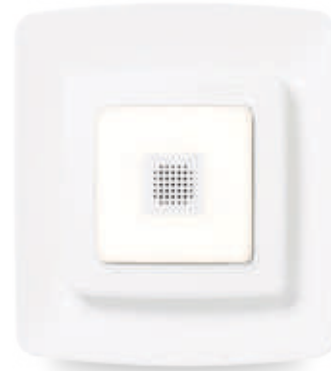
Broan Model	Light	Install Time
FG1000VV* + FG1000VVS	SurfaceShield™ LED	< 5 min
VVLED	SurfaceShield™ LED	< 5 min
FG600RGB* + FG600RGS	ChromaComfort™ LED	< 5 min

\*4-pack



**SENSONIC® FG800SPK**

- Quickly and easily installs in under 5 minutes
- Brilliant LED lighting and Bluetooth® wireless speaker to play your favorite music, podcast or news
- No additional wiring needed. Quick-connect plug allows you to upgrade without new wiring, even if the existing cover doesn't have a light
- Soft LED lighting illuminates darker areas of the bathroom; 600 lumens; 3000K color temperature; rated life of 25,000 hours
- Fan cover dimensions: 10¼" x 9¾"



**SENSONIC® FG800SPKN**

**While supplies last**

- Includes 2 sets of fan cover springs for use with multiple ventilation fan models
- Compatible with existing ventilation fan housing dimensions of 7½" x 7¼" and 8¼" x 8"
- Fan cover dimensions: 11" x 9¾"



**Upgrade your fan, and bring in some music.**

Sensonic® speakers with Bluetooth® wireless technology fill your room with rich sound from above. Connect to your phone and bring music, talk or your favorite podcast through the dual high-fidelity speakers at the touch of a button.



**CHROMACOMFORT™ SENSONIC® FG800RGB**

- Quickly and easily installs in under 5 minutes
- Customizable, color changing LED lighting and Bluetooth® wireless speaker to play your favorite music, podcast or news
- No additional wiring needed. Quick-connect plug allows you to upgrade without new wiring, even if the existing cover doesn't have a light
- Fan cover dimensions: 10¼" x 9¾"

Broan Model	NuTone Model	Light	Speaker	Install Time
FG800SPK* + FG800SPKS	FG800SPKN* + FG800SPKNS**	LED	Bluetooth® Speaker	< 5 min
FG800RGB* + FG800RGS	—	ChromaComfort™ LED	Bluetooth® Speaker	< 5 min

\*4-pack

\*\*While supplies last

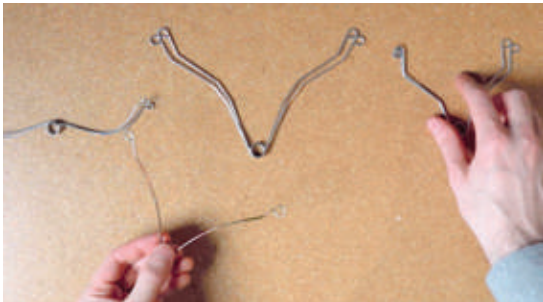


# Quick and easy installation in five simple steps.



## Step 1

Remove the old grille.



## Step 2

Match the spring size to your current fan.



## Step 3

Snap the springs into the corresponding clips.



## Step 4

Squeeze and insert into the slots.



## Step 5

Push it up tight and you're done.



No drywall cutting



No drywall patching



Plug-in upgrade



No wiring



No tools



**LED LIGHT FG600**

- Quickly and easily installs in under 5 minutes
- Brilliant LED lighting illuminates darker areas of the bathroom; 750 lumens; 3000K color temperature; rated life of 25,000 hours
- No wiring needed; quick-connect plug allows you to easily connect the LED light
- No drywall cutting or patching required
- Bright white finish matches most white ceiling paint
- Compatible with existing fan housing dimensions 7¼" x 7½" and 8¼" x 8"
- Fan cover dimensions: 10¼" x 9¾"



**LED LIGHT FG500N**

- Quickly and easily installs in under 5 minutes
- Brilliant LED lighting illuminates darker areas of the bathroom; rated life of 25,000 hours
- No wiring needed; quick-connect plug allows you to easily connect the LED light
- No drywall cutting or patching required
- Bright white finish matches most white ceiling paint
- Compatible with existing fan housing dimensions 7¼" x 7½" and 8¼" x 8"
- Fan cover dimensions: 11" x 9¾"



Scan or tap the code to see the FG701 installation video.



**QUICKIT® QK60, QKN60**

- Reduces sound by up to 50% while improving air movement by up to 20%
- 60 CFM adequately ventilates smaller baths and powder rooms
- 2.5 sones provides quiet performance
- White fan cover blends well with any décor
- Fan cover stays cleaner longer with fewer vent slots to clean
- Motor plate accommodates a variety of economy fan models
- Air and sound ratings are HVI Certified
- UL Listed



**UNIVERSAL CLEANCOVER™ FG701**

- Fresh, stylish design to easily revitalize an existing fan cover
- Quickly installs in under 5 minutes
- No drywall cutting or patching required
- Universal Fit for compatibility with small, medium and large size Broan and NuTone ventilation fans
- Bright white finish matches most white ceiling paint
- Low profile seamlessly blends into the ceiling
- Fan cover dimensions: 13½" x 13½"

Broan Model	NuTone Model	CFM	Sones	Light	Install Time
QK60* + QK60S	QKN60* + QKN60S	60	2.5	—	< 10 min
FG600* + FG600S	FG500N* + FG500NS	—	—	LED	< 5 min
FG701* + FG701S	—	—	—	—	< 5 min

\* 4-pack



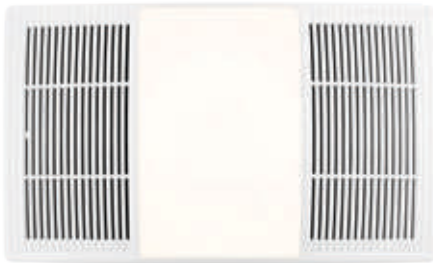
**INVENT® FGR300**

- Retrofits InVent® ventilation fan installations
- No drywall cutting or patching
- Hides existing dry wall cuts
- Instant upgrade blends with any décor
- Bright white finish matches most white ceiling paint
- Compatible with existing fan housing dimension of 9¼" x 10"
- Fan cover dimension: 11½" x 12"
- Fits Broan® and NuTone® Roomside, Flex Series™ and InVent® Series fans without a light



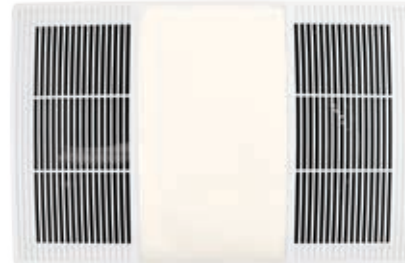
**ECONOMY FGR101**

- Retrofits Economy Series ventilation fan installations
- No drywall cutting or patching
- Hides existing dry wall cuts
- Instant upgrade blends with any décor
- Bright white finish coordinates with most white ceiling paint
- Compatible with existing fan housing dimension of 7½" x 7¼"
- Fan cover dimension: 9¼" x 9¾"
- Fits Broan® and NuTone® Economy Series fans



**FG80HBS**

- Heater exhaust fan light upgrade
- Features integrated dimmable LED with color adjustable CCT lighting; warm (2700K), bright (3500K), and daylight (5000K)
- LED dimmable lighting may be used as a nightlight (dimmer switch is not included)
- Bright white finish matches most white ceiling paint
- Compatible with: Broan 655 revision C (units manufactured after the year 2001), NuTone 665RP, Broan 656, Broan 659, Broan 657, Broan 696, NuTone 668RP, NuTone 765H80L, & Broan 765H80LB.
- Fan cover dimensions: 9¾" x 16¼"



**FG110HBS**

- Heater exhaust fan light upgrade
- Features integrated dimmable LED with color adjustable CCT lighting; warm (2700K), bright (3500K), and daylight (5000K)
- LED dimmable lighting may be used as a nightlight (dimmer switch is not included)
- Bright white finish matches most white ceiling paint
- Compatible with: Broan 100HL, Broan 100HFL, NuTone 765HL, Nutone 765HFL, NuTone 765H110L, and Broan 765H110LB
- Fan cover dimensions: 11¾" x 17¾"

Broan Model	Heater Watts	Light	Install Time
FGR300* + FGR300S	—	—	< 10 min
FGR101** + FGR101S	—	—	< 5 min
FG80HBS	1300	Dimmable CCT LED	< 10 min
FG110HBS	1300	Dimmable CCT LED	< 10 min

\*4-pack  
\*\*6-pack

# The control your fan needs to ventilate smarter.

The perfect control switch is a beautiful finishing touch, and our attractive options provide the speed, sensing and control needed for any spot ventilation solution. Sleek styles in bright white complement all designs and color palettes. All you need is the faceplate to match your décor. Installation is simple, and the results will help you breathe easy.



## Humidity Sensing Controls

### Sensaire™ Humidity Sensing Switch

#### Models 82W\*

- Turn any ventilation fan into a humidity-sensing solution
- Up to 4X faster humidity sensing than the competition
- Helps reduce mold and mildew to improve indoor air quality
- Three easy-to-program modes: Auto Sense Mode, Duty Cycle Mode & RH% Humidistat mode
- Rated 120V at 60Hz, max total of 9 amps/switch
- Available in Ivory (I) or White (W)

### Digital Dehumidistat Model DD500W\*

- Turn any ventilation fan into a humidity-sensing solution
- Reduce mold and mildew to improve indoor air quality
- Precision control enables desired humidity level to start the fan
- LED indicates fan on/off status
- Rated 120V at 60Hz, max total of 9 amps/switch
- Replaces obsolete model DH100W



**Two-Function Control**

**Model P2RW\***

- Two rocker switches control any two functions: fan, light, heater or nightlight
- Save space, conveniently fitting in a single gang box
- Simple installation saves time and money
- Rated 120V at 60Hz, max total of 15 amps/switch
- Replaces obsolete models: 269VL, 269WV, 68V, 68W, P68W, P68WN



**Three-Function Control**

**Model P3RW\***

- Control multiple applications from a single, central location
- Control any exhaust fan, fan/light or heater/fan/light
- Save space, conveniently fitting in a single gang box
- Simple installation saves time and money
- Rated 120V at 60Hz, max total of 15 amps/switch
- Replaces obsolete models: 66V, 66W, P66V, P66W, P66WN



**Occupancy Sensor**

**Model MS100W**

- Turn fan on/off when motion is sensed or stops
- Set fan/light runtime after motion stops
- Detect motion in rooms up to 900 square feet
- Sense motion up to 35 feet away
- Save energy by operating the fan/light only when motion is detected
- Rated 120V at 60Hz, max total of 1/2 HP, 300W LED/CFL, 600W incandescent



Precisely control the ventilation in your bathroom or indoor environment to mitigate mold and moisture issues from improper use of exhaust fans. Make Sensaire™ your first choice in smart ventilation.



**Speed Control**

**Model SC100W\***

- Turns any PSC or AC fan into an adjustable-speed fan
- Control sound levels by adjusting fan speed and CFM power
- Adjust fan speed precisely to bathroom ventilation needs to save energy
- Rated 120V at 60Hz, max total of 3 amps/switch
- Replaces obsolete models: 277V, 57V, 57W, 75V, P57W, P57WN



**60 Minute Countdown Timer**

**Model CD60W\***

- Set countdown timer to 20, 40 or 60 minutes
- Can also be set to run continuously
- Save energy—countdown timer ensures the fan always turns off
- LED indicates run-time remaining
- Rated 120V at 60Hz, max total of 9 amps/switch
- Replaces obsolete models: 59V, 59W, 61V, 61W, 62W, 63V, 63W, 71V, CFT12WH, P59V, P59W, P59WN, P61WN, VS63WH, VS66WH, VS67WH, VS68WH, VS69WH



**Delay Off Timer**

**Models DT100W\***

- Use the 'delay' setting under the switch plate to ensure proper bathroom ventilation by keeping the fan running for 5 to 60 minutes after you leave
- Use the 'ventilation' setting to meet code requirements by ventilating the bathroom for a predetermined amount of time every hour
- User adjustable settings can be changed as much as desired until the perfect setting is found
- Designed to meet ASHRAE 62.2 and CalGreen Title 24 codes for continuous ventilation
- Rated 120V at 60Hz, max total of 6 amps/switch
- Replaces obsolete models: 64V, 64W

\*Faceplate not included



<b>Broan</b>		<b>69W</b>	<b>P2RW</b>	<b>P3RW</b>	<b>77DV, 77DW</b>	<b>82A, 82W</b>	<b>DD500W</b>	<b>MS100W</b>	<b>SC100W</b>	<b>CD60W</b>	<b>DT100W</b>
<b>Ventilation Fans</b>	<b>670, 671, 688, 689</b>	•				•	•	•	•	•	•
	<b>E050, E070</b>	•				•	•	•	•	•	•
	<b>LP80, LP110</b>	•				•	•	•	•	•	•
	<b>LP50100DC</b>	•				•	•	•		•	•
	<b>AE50, A80, A80HD, AE80, AE80B, A110, AE110, AE80K, AE110K</b>	•				•	•	•	•	•	•
	<b>AE80S, AE110S</b>	•	•					•	•	•	•
	<b>AE50110DC</b>	•				•	•	•		•	•
	<b>AE50110DCS</b>	•	•					•		•	•
	<b>QTXE080, QTXE110, QTXE150</b>	•				•	•	•	•	•	•
	<b>QTXE110S</b>	•	•					•	•	•	•
	<b>QTXE110150DC</b>	•				•	•	•		•	•
	<b>QTXE110150DCS</b>	•	•					•		•	•
	<b>RB80, RB110</b>	•				•	•	•	•	•	•
	<b>XB50, XB80, XB110</b>	•				•	•	•		•	•
	<b>XB110H</b>	•	•					•		•	•
	<b>ZB80, ZB110</b>	•				•	•	•		•	•
	<b>ZB80M, ZB110M</b>	•	•			•	•			•	•
	<b>ZB110H</b>	•	•					•		•	•
<b>Ventilation Fan/Lights</b>	<b>657, 678, 679, 696, 751, HD80L</b>	•	•			•	•	•	•	•	•
	<b>750</b>		•	•		•	•	•	•	•	•
	<b>744, 744LED, 744L, 744RL</b>	•	•			•	•	•	•	•	•
	<b>A50L, A70L, A80L, AE80L, AE80BL, A110L, AE110L, AE80LK, AE110LK, AE80CCTK, AER110CCTK</b>	•	•			•	•	•	•	•	•
	<b>AE80SL, AE110SL</b>		•	•				•	•	•	•
	<b>AE50110DCL</b>	•	•			•	•	•		•	•
	<b>AE50110DCSL</b>		•	•				•		•	•
	<b>770RLTK, AR80LWH, AER80LWH, AER110LTK, AER110LBN</b>	•	•			•	•	•	•	•	•
	<b>AER110SLW</b>		•	•				•	•	•	•
	<b>AR80MB</b>		•								
	<b>QTXE080FLT, QTXE110FLT, QTXE150FLT</b>		•	•		•	•	•	•	•	•
	<b>QTXE110150DCL</b>	•	•			•	•	•		•	•
	<b>QTXE110150DCSL</b>		•	•				•		•	•
	<b>RB80L1, RB110L1</b>	•	•			•	•	•	•	•	•
	<b>XB50L1, XB80L1, XB110L1</b>	•	•			•	•	•		•	•
	<b>XB110HL1</b>		•	•				•		•	•
	<b>ZB80L1, ZB110L1</b>	•	•			•	•	•		•	•
	<b>ZB80ML1, ZB110ML1</b>		•	•		•	•			•	•
	<b>ZB110HL1</b>		•	•				•		•	•
	<b>Heater/Fan/Lights</b>	<b>765H80LB, 765H110LB</b>		•	•		•	•	•	•	•*
<b>100HL, 100HFL</b>			•	•		•	•	•	•	•*	
<b>161</b>		•						•		•	
<b>162</b>			•			•	•	•	•	•	•
<b>163</b>		•						•		•	
<b>164</b>			•			•	•	•	•	•	
<b>655</b>			•	•		•	•	•	•	•*	
<b>656</b>			•					•		•*	
<b>658</b>			•			•	•	•	•	•*	
<b>659</b>			•	•		•	•	•	•	•*	
<b>BHFLED80, BHFLED110, BHF80, BHF110</b>				•			•			•*	
<b>QTX110HL, QTX110HFLT</b>				•	•	•	•	•	•	•*	

Products in red have been discontinued.

\*The CD60W will work with these heater/fan/lights if the heater is wired to a separate rocker switch



**NuTone**

		69W	P2RW	P3RW	77DV, 77DW	82A, 82W	DD500W	MS100W	SC100W	CD60W	DT100W
<b>Ventilation Fans</b>	695, 696N	•				•	•	•	•	•	•
	EZ80N, LPN80	•				•	•	•	•	•	•
	AEN50, AEN80, AEN80B, AN110, AEN110, AERN80K, AERN110K	•				•	•	•	•	•	•
	QTXEN080, QTXEN110, QTXEN150	•				•	•	•	•	•	•
	RN80, RN110	•				•	•	•	•	•	•
<b>Ventilation Fan/Lights</b>	668RP, 763, 763N, 8664RP, HB80RL	•	•			•	•	•	•	•	•
	8663RP		•	•		•	•	•	•	•	•
	744NT, 744LEDNT, 744RNL	•	•			•	•	•	•	•	•
	AN70L, AN80L, AEN80L, AEN80BL, AN110L, AEN110L, AERN80LK, AERN110LK	•	•			•	•	•	•	•	•
	AERN110DCSL		•	•				•		•	•
	770RNLTK, AERN80LWH, AERN110LTK	•	•			•	•	•	•	•	•
	AERN110SLW		•	•				•	•	•	•
	QTXEN080FLT, QTXEN110FLT, QTXEN150FLT		•	•		•	•	•	•	•	•
	QTNLEDA, QTNLEDB		•	•		•	•	•	•	•	•
	RN80L, RN110L	•	•			•	•	•	•	•	•
	765H80L, 765H110L		•	•		•	•	•	•	•*	
765HL, 765HFL		•	•		•	•	•	•	•*		
605RP		•			•	•	•	•	•*		
665RP		•	•		•	•	•	•	•*		
9412D	•						•		•		
9417DN		•			•	•	•	•	•	•	
9422P	•						•		•		
9427P		•			•	•	•	•	•		
9093WH, QT9093WH				•							
QTXN110HL, QTXN110HFL			•	•	•	•	•	•	•*		

*Products in red have been discontinued.*

\*The CD60W will work with these heater/fan/lights if the heater is wired to a separate rocker switch



# Fresh In™

## An energy-efficient, reliable way to bring fresh air inside.

In today's tightly built homes, bringing fresh air inside makes perfect sense, whether it's done to meet code requirements or for personal comfort preferences. That's why Broan offers Basic and Premium solutions to residential ventilation. Both models have variable speeds and an ultra-efficient Electronically Commutated Motor (ECM) to maintain a constant airflow. The Basic model is a single-mode solution that delivers continuous airflow. The Premium model utilizes an algorithm that satisfies three ventilation codes and offers five comfort modes to suit different climatic environments. Built-in intelligence delivers airflow without losing efficiency when installed according to industry best practices.

**An open window doesn't mean fresh air.** The moment you open a window, fine dust and other allergy aggravating particles settle onto every surface. Optional MERV 8 or MERV 13 rated filters remove particulates before air enters the dwelling.

### MERV Filtration

MERV 8  
FIN-MERV8

MOLD  
SPORES  
FINE DUST

MERV 13  
FIN-MERV13

MOLD  
SPORES  
FINE DUST  
BACTERIA  
SMOKE



CLEAN AIR

CLEANER AIR





**FIN-180B, FIN-180P**

- High efficiency ECM motor lowers energy consumption for more savings
- Blower efficiency as high as 8.4 CFM/W
- Constant airflow maintains the selected airflow under any conditions (up to 0.55 in. w.g.)
- Small and lightweight for easy installation and service
- Super silent ventilation with a sound level of 0.65 @ 130CFM
- High density EPS insulated housing avoids condensation and air leakage
- 5-year parts warranty

**Broan Fresh In™ fits in, anywhere.**

Install in any location or orientation—from the attic to the basement.



Optional VT11W Wall Control for Fresh In™ Premium features a filter clean indicator light.



Fresh In™ Series Model number	BASIC FIN-180B	PREMIUM FIN-180P
Constant Airflow	Yes	Yes
Unit Intelligence	No	Learning mode: AHU running time, outdoor temperature and humidity
Blower CFM	Selectable CFM: 30–180 CFM, 10 CFM increments	Intermittent (% running time) for unit intelligence: 130 and 180 CFM time-based adjustment
Static pressure*	Up to 0.4 in. w.g.—does not influence selected CFM level	
Power consumption (watts)	10.8 at 90 CFM 0.2 in. w.g.	18.2 at 130 CFM 0.2 in. w.g.
Fan efficiency	8.3 at 90 CFM 0.2 in. w.g.	7.1 at 130 CFM 0.2 in. w.g.
Noise level	0.65 sones at 130 CFM	
Filter	Washable aluminum filter—optional MERV 8 and 13 filters	
Motor	ECM, constant airflow	
Damper	Spring loaded with magnet	Motorized
Operating range of temperature & humidity	Continuous ventilation	3 codes compliant modes 5 comfort modes
Dimensions less ports	10-1/4" W x 14-3/4" D x 10" H	
Warranty on parts	5 years	
Optional wall control	No	VT11W
Optional finishing ring	FIN-R1015	
Product recommended for	Hot & Dry	Mixed & Hot, Dry & Humid
HVI Listed	Yes	Yes
ENERGY STAR® Certified	Yes	Yes
Overture® Compatible	Yes	No

\*Specifications subject to change. See specifications sheet at Broan-NuTone.com.



**Fresh In™ Premium™**

No Thermostat Call      Thermostat Heating Call      Thermostat Cooling Call

Code Compliant	Climate Zone	Lower limit		Higher limit		Lower limit		Higher limit	
		Temp (F)	Dew point (F)	Temp (F)	Dew point (F)	Temp (F)	Dew point (F)	Temp (F)	Dew point (F)
1-ASHRAE 2016	—	14				14			
2-ASHRAE 2010	—	14	Code compliant—no limits			14	Code compliant—no limits		
3-IRC / IMC 2012–2015	—	14				14			

**Comfort modes**

Mode	Climate Zone	Temp (F)	Dew point (F)	Temp (F)	Dew point (F)	Temp (F)	Dew point (F)	Temp (F)	Dew point (F)
A-Hot / Humid #1	2A, 1	40	23	88	73	32	14	96	78
B-Hot / Humid #2	1, 2A	40	23	90	75	32	14	98	80
C-Hot / Dry	2B	40	23	95	75	32	14	102	85
D-Mixed / Humid	3A, 4A, 3C, 4C	40	23	85	75	32	14	90	80
E-Mixed / Dry	3B, 4B	40	23	86	75	32	14	95	80

™The intelligent Fresh In™ algorithm is patent pending.



# Utility fans. Every room can be more comfortable.

Every room needs ventilation. That's why we thought of every solution. Our utility fans deliver clean, fresh air wherever you need it—a bathroom, laundry room, recreation room, workshop or nursery. Look to our room-to-room, wall/ceiling mount, through-wall or vertical discharge utility fans for powerful spot ventilation. Simple, practical and powerful—our fans provide the quality you expect and the comfort you deserve.



**General features for chain-operated utility fans**

- Pull-chain opens the door and starts fan
- Housing adjusts to fit walls from 4½"-9½" thick
- Specially designed fan blade
- Housing features foam insulated door for energy efficiency
- Use for a garage, kitchen, laundry room, rec room, and more



**506**

- 10" fan (10⅜" diameter sleeve)
- 430 CFM, designed for use in a garage, kitchen, laundry room, rec room, and more
- 7.5 Sones

**507**

- While supplies last**
- 8" fan (8⅜" diameter sleeve)
  - 250 CFM
  - 7.0 Sones

**General features for room-to-room fans**

- Adjustable mounting brackets span up to 24 in.
- Installs easily between ceiling joists or wall studs
- Built-in damper prevents backdrafts
- Bright white fan cover matches most white ceiling paint
- Permanently lubricated, thermally protected motor
- UL listed and HVI-2100 certified for safety



**510**

- While supplies last**
- 370 CFM, Whole home or Commercial Ventilation
  - 8.5 Sones

**511**

- 180 CFM, powerful ventilation designed for larger rooms or master baths, eliminates moisture, pollutants, and odors from larger rooms
- 4.5 Sones



**502 While supplies last, 503**

- Installs easily between ceiling joists or wall studs
- Built-in damper prevents backdrafts
- Fits ¾" x 10" duct
- 502 is 300 CFM and 503 is 160 CFM
- 502 is 9.0 Sones and 503 is 5.0 Sones



**508 (10"), 509/509S (8")**

- 509S: features an integral ON/OFF rotary switch—no wall switch to wire
- 509S: use in a garage, kitchen, laundry room, rec room, and more
- 508 is 290 CFM and 7.5 Sones
- 509/509S is 200 CFM and 8.5 Sones

Broan Model	CFM	Sones	Sizing Specifications	Overture® Compatible	Cover Size
506	430	7.5	Fits 4½"-9½" thick walls	Yes	13½ x 13½
507**	250	7.0	Fits 4½"-9½" thick walls	Yes	11½ x 11½
510**	370	8.5	Fits 3"-5½" thick walls	Yes	13½ x 13½
511	180	4.5	Fits 3"-5½" thick walls	Yes	13½ x 13½
502**	300	9.0	Fits ¾" x 10" duct	Yes	13½ x 13½
503	160	5.0	Fits ¾" x 10" duct	Yes	11½ x 11½
508	290	7.5	Fits 4½"-9½" thick walls	Yes	13½ x 13½
509	200	8.5	Fits 4½"-9½" thick walls	Yes	11½ x 11½
509S	200	8.5	Integral ON/OFF Rotary Switch	Yes	11½ x 11½

\*\*While supplies last





**512 While supplies last**

- 90 CFM, Powerful ventilation to remove moisture and reduce the risk of mold or mildew
- 4.0 Sones
- Built-in variable speed control
- Easy interior wall installation
- Galvanized steel housing stands up to moisture
- Permanently lubricated motor
- 6" room to room
- Use SC100W speed control separately

**512M**

- 6" Through-Wall
- Louvered exterior wall cap with built-in bird screen
- 6" diameter flexible aluminum duct included
- 70 CFM and 6.0 Sones

**General Features & Benefits**

- Galvanized steel housing installs easily between ceiling joists
- Steel mounting brackets with keyhole slots for fast installation



**504**

**While supplies last**

- 10" vertical discharge
- Fits 10" round duct—use Model 472 transition/damper (available separately) for 8" round duct (performance will be reduced)
- 330 CFM and 8.0 Sones

**505**

- 8" vertical discharge with built-in damper
- 8" fan, 8¼" diameter housing
- 200 CFM and 8.5 Sones

**673**

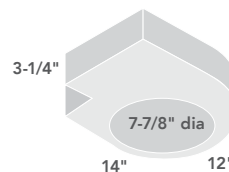
**While supplies last**

- 6" vertical discharge with built-in damper
- 6" paintable fan, spin-on, white fan cover
- 60 CFM and 4.5 Sones

Broan Model	CFM	Sones	Sizing Specifications	Overture® Compatible
512**	90	4.0	Fits up to 5½" thick walls	Yes
512M	70	6.0	Fits up to 5¼"–10" thick walls	Yes
504**	330	8.0	Fits 10" round duct	Yes
505	200	8.5	Fits 8" round duct	Yes
673**	60	4.5	Fits 6" round duct	Yes

\*\*While supplies last





**8210 Ceiling Mount, Vertical Discharge**

**While supplies last**

- Ventilates directly through the roof with round ducting
- 210 CFM, Whole home or Commercial Ventilation
- 6.5 Sones
- Surface-mount fan installs on interior walls with ease
- Room-to-room wall fan
- Two attractive white fan covers can be painted to match decor
- High-strength, reinforced fan blade
- Permanently lubricated motor for a long life
- Specially designed housing reduces diameter of discharge opening to fit 7" round duct; no reducer needed
- UL Listed for use in cooking areas

**8310 Wall/Ceiling Mount, Side discharge only**

**While supplies last**

- 160 CFM, powerful ventilation designed for larger rooms or master baths, eliminates moisture, pollutants, and odors from larger rooms
- 5.0 Sones
- Steel mounting brackets with keyhole slots for fast installation
- Duct size 8" diameter
- 3 1/4" x 10" duct, side discharge
- Installs easily in walls or ceiling
- Built-in backdraft damper
- UL Listed for use in cooking areas

NuTone Model	CFM	Sones	Duct	Overture® Compatible
8210**	210	6.5	Room-to-room	Yes
8310**	160	5.0	8	Yes

\*\*While supplies last



# BUILDING THE AMERICAN DREAM

Broan-NuTone® is America's most trusted residential ventilation company. We're proud to bring better air quality to more than 90 million homes nationwide.



# High-traffic environments need high performance ventilation.

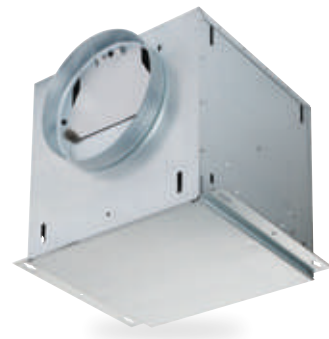
Need an exceptionally quiet solution to light commercial ventilation? With their heavy-duty motors, Broan-NuTone High Capacity Ventilation Fans are the perfect answer for ventilating conference rooms, dining areas, public restrooms and other heavily-trafficked spaces. Low-vibration and low-profile, these discrete products work quietly and powerfully behind the scenes to remove odor, humidity and air-borne particulates that affect indoor air quality.



## L100E, L150E, L200E, L250E, L300E

*Available end of 2022*

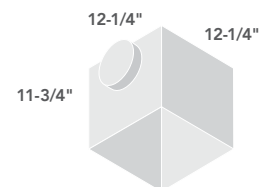
- Ceiling mounted
- 8" round metal duct connector
- 20 gauge galvanized steel housing
- Duct horizontally or vertically
- Low profile, white plastic fan cover
- Model MG1 metal fan cover sold separately
- Models L100E, L150E, L200E, L250E and L300E are cULus listed for use over tubs and showers when connected to a GFCI branch circuit
- Model 80L Variable Speed Control adjusts blower speed and sound level (available separately)



## L100EL, L150EL, L200EL, L250EL, L300EL

*Available end of 2022*

- Inline mounted
- Removable access panel, no insulation
- Two 8" round duct connectors
- No fan cover
- Suitable for kitchen installations





**L100, L150**

- 6" round metal duct connector
- Single, impact-resistant centrifugal blower wheel housing
- 20 gauge galvanized steel housing
- Duct horizontally, vertically, or in-line with a separate adapter
- Low profile, white or painted white enamel metal fan cover
- Models L100L and L150L are UL Listed for use over tubs and showers when connected to a GFCI branch circuit
- Model 80L Variable Speed Control adjusts blower speed and sound level (available separately)

**L200, L250, L300**

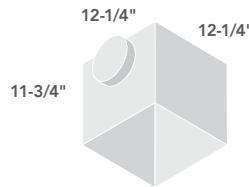
- 8" round metal duct connector
- Single, impact-resistant centrifugal blower wheel (Model L300KMG has a metal wheel)
- 20 gauge galvanized steel housing
- Duct horizontally, vertically, or in-line with a separate adapter
- Models L200L, L250L and L300L are UL Listed for use over tubs and showers when connected to a GFCI branch circuit
- Model 80L Variable Speed Control adjusts blower speed and sound level (available separately)

**L100L, L150L**

- Removable access panel, no insulation
- Two 6" round duct connectors
- No fan cover

**L200L, L250L, L300L**

- Suitable for kitchen installations
- Removable access panel, no insulation
- Two 8" round duct connectors



Broan Model	CFM	Sones	Duct	Overture® Compatible
L100	109	0.9	6	Yes
L150	157	1.5	6	Yes
L200	210	1.7	8	Yes
L250	259	2.2	8	Yes
L300	308	2.9	8	Yes
L100L	106	0.7	6	Yes
L150L	147	1.1	6	Yes
L200L	195	1.9	8	Yes
L250L	245	2.3	8	Yes
L300L	293	3.1	8	Yes
L400	434	2.3	4½ x 18½	Yes
L500	514	3.3	4½ x 18½	Yes
L700	701	4.7	4½ x 18½	Yes



**Model MG1 Metal Fan Cover Upgrade**

Compatible with L100, L150, L200, L250 and L300 series ventilation fans. Installation can be completed in 5 minutes or less



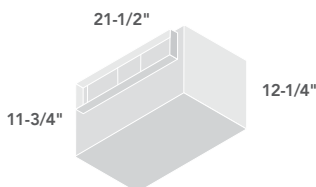
**Model 80L Variable Speed Control**

Specially designed for use with Broan LoSone Select® ventilators rated at 3 Amps or less



**L400, L500, L700**

- 4½" x 18½" duct connector
- Two impact-resistant centrifugal blower wheels
- Duct horizontally or vertically—In-line available with separate adapter
- Quiet automatic backdraft dampers

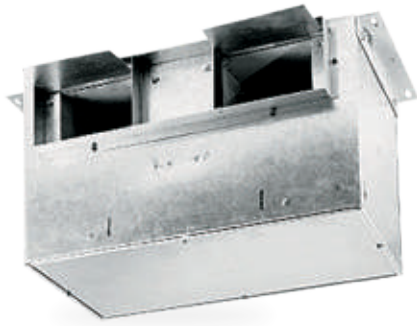


**Model RD1 Radiation Damper**

Prevents the rapid spread of fire to other areas of a home during a fire

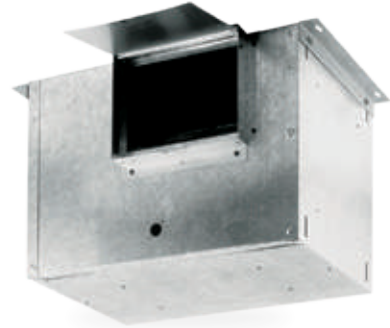


**VENTILATION IN  
COMMON AREAS  
WHEN YOU NEED IT**



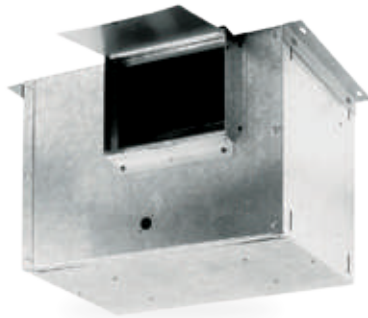
**L400L, L500L, L700L**

- Removable access panel; no insulation



**L900, L1500**

- L900 can use the 80L variable speed blower control (sold separately)



**L900L, L1500L**

- Removable access panel; no insulation
- Can use the 80L variable speed blower control (sold separately)



**L2000L**

- 38" L x 14<sup>5</sup>/<sub>8</sub>" W x 14<sup>5</sup>/<sub>8</sub>" H
- Fits 7<sup>3</sup>/<sub>4</sub>" x 33<sup>3</sup>/<sub>4</sub>" duct
- Optional metal fan cover (Model G102) and damper kit (Model D100)

Broan Model	CFM	Sones	Duct	Overture® Compatible
L400L	406	1.6	4½ x 18½	Yes
L500L	519	3.4	4½ x 18½	Yes
L700L	681	3.7	4½ x 18½	Yes
L900	901	4.1	8 x 12	Yes
L900L	894	3.8	8 x 12	Yes
L1500L	1214	6.7	8 x 12	Yes
L2000L	1791	9.4	7¾ x 33¾	Yes

