

30 805 875 Product version from 10/1/2024



- 500mm projection
- pivoting spout
- laminar flow
- cold water only
- max. flow 5.7 l/min at 3 bar flow pressure
- min. recess depth 125 mm
- max. recess depth 80 mm
- lead-free
- This product can help a building meet the requirements of Green Building Rating Systems, e.g. LEED®, BREEAM®, DGNB
- WRAS

	Brushed Platinum	30 805 875-06
	Chrome	30 805 875-00
	Platinum	30 805 875-08
	Dark Chrome	30 805 875-19
	Brushed Durabronze (23kt Gold)	30 805 875-28
	Brushed Dark Brass (PVD)	30 805 875-39
	Brushed Bronze (PVD)	30 805 875-42
	Brushed Champagne (22kt Gold)	30 805 875-46
	Champagne (22kt Gold)	30 805 875-47
	Brushed Chrome	30 805 875-93
	Brushed Dark Platinum	30 805 875-99

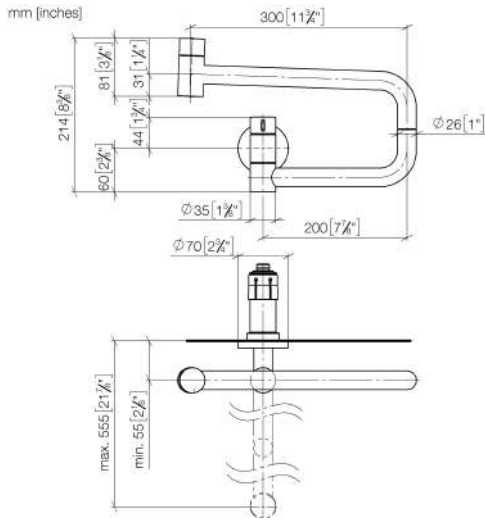
Required miscellaneous

**POT FILLER Concealed wall elbow** 35 087 970 90

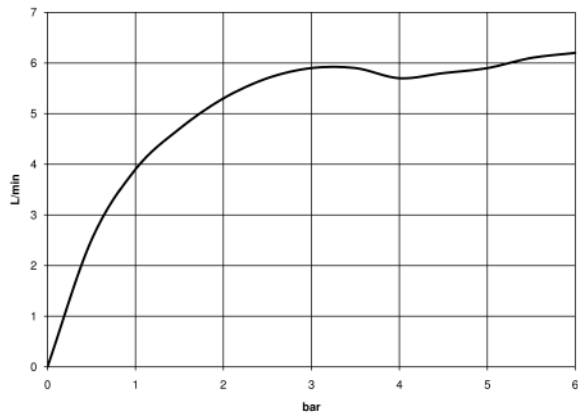


- max. recess depth 125 mm
- min. recess depth 80 mm

30 805 875 Product version from 10/1/2024



Flow rate chart



Codes & Standards

ASME A112.18.1	cUPC	DIN 4109	ISO 3822
NSF372	NSF61	Scottish Water Byelaws	UK Water Supply Regulations

Ü-Zeichen



# TARA ULTRA POT FILLER Cold-water valve - Brushed Platinum

TARA ULTRA

30 805 875 Product version from 10/1/2024

## Certificates and sustainability

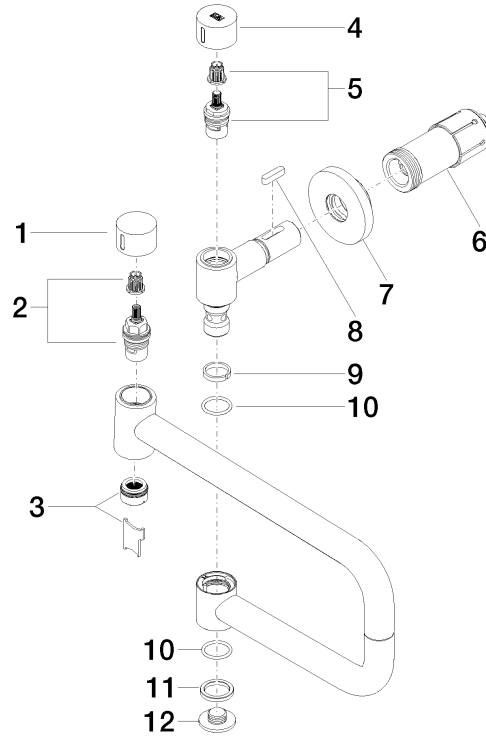
LGA\_29

IAPMO\_N-4

IAPMO\_6

WRAS\_240702

IAPMO\_4976 (



### Spare parts list

No.	Item Number	Name	Quantity used	Delivery time
	11 09 28 10 139 90	ring	1.00	2
	10 09 14 10 015 90	seal	2.00	2
	8 90 16 04 001 00 90	spring	1.00	2
	3 90 23 01 026 11-06	aerator	1.00	10
	7 90 27 87 039 00-06	rosette	1.00	10
	6 90 30 01 213 00 90	connection	1.00	2
	4 09 20 62 027-06	handle	1.00	10
	9 09 28 10 136 90	ring	1.00	2
	1 09 20 62 025-06	handle	1.00	10
	12 09 21 02 028-06	lid	1.00	10
	2 90 90 03 146 00 90	top	1.00	2
	5 90 90 03 171 00 90	top	1.00	2