

33 880 888 Product version from 5/31/2010 to 7/23/2018



- 200mm projection
- pivotable spout 360°
- air-enriched flow and spray flow
- height of mixer 415 mm
- test
- height up to aerator 275 mm
- hole diameter 35 mm
- 2 x pressure hose with 3/8" cap nut
- sprayface with anti-scaling system
- max. flow 5.7 l/min at 3 bar flow pressure
- lead-free
- This product can help a building meet the requirements of Green Building Rating Systems, e.g. LEED®, BREEAM®, DGNB

Intrinsic protection against back flow.

	Brushed Platinum	33 880 888-06 0010
	Chrome	33 880 888-00 0010
	Platinum	33 880 888-08 0010
	Dark Chrome	33 880 888-19 0010
	Brushed Dark Brass (PVD)	33 880 888-39 0010
	Brushed Bronze (PVD)	33 880 888-42 0010
	Brushed Chrome	33 880 888-93 0010
	Brushed Dark Platinum	33 880 888-99 0010

Recommended miscellaneous

Dispenser with rosette - Brushed Platinum 82 444 970-06

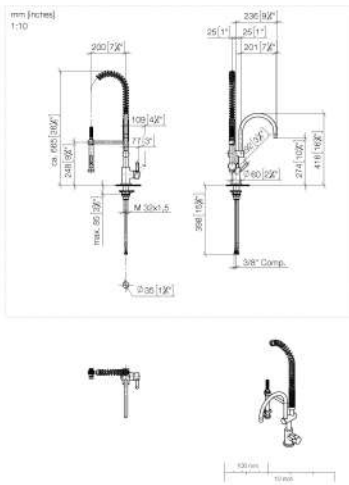


Recommended miscellaneous

AIR SWITCH Control button - Brushed Platinum 10 713 970-06



33 880 888 Product version from 5/31/2010 to 7/23/2018



Codes & Standards

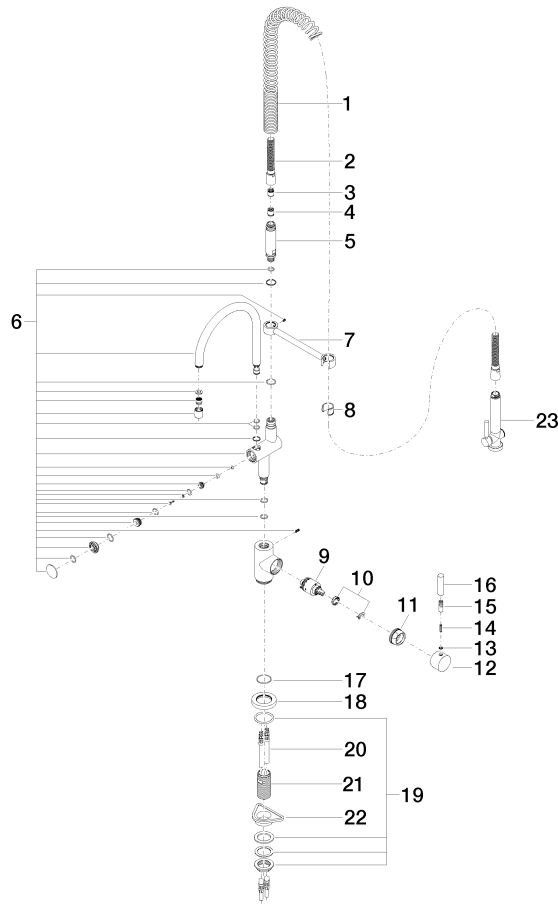
ADA	ASME A112.18.1	California Energy Commission (CEC)	cUPC
NSF372	NSF61		

Certificates and sustainability

IAPMO_N-4976 IAPMO_6397 IAPMO_4976 (

33 880 888 Product version from 5/31/2010 to 7/23/2018

Parts for other finishes can be found here: [Chrome](#)





TARA Profi single-lever mixer - Brushed Platinum

TARA

33 880 888 Product version from 5/31/2010 to 7/23/2018

Spare parts list

No.	Item Number	Name	Quantity used	Delivery time
12	90 20 88 040 00-06	handle	1.00	10
18	09 28 10 055-06	rosette	1.00	10
20	04 30 04 045 00 90	hose	2.00	2
7	04 17 20 014 00-06	holder	1.00	10
11	09 24 04 107-06	nut	1.00	10
5	09 30 01 067 10-06	adaptor	1.00	10
6	90 19 88 019 01-06	spout	1.00	10
1	09 16 02 034 90	spring	1.00	2
3	09 23 01 047 90	back-flow preventer	1.00	2
21	09 30 01 010 90	adaptor	1.00	2
14	09 31 11 010 90	pin	1.00	2
16	09 20 62 005-06	handle	1.00	10
22	09 18 40 090 90	sleeve	1.00	2
19	04 23 10 009 02 90	fixing set	1.00	2
17	09 14 10 102 90	seal	1.00	2
9	90 15 05 065 00 90	cartridge	1.00	2
15	90 24 04 048 00-06	nipple	1.00	10
23	90 12 11 097 11-06	shower	1.00	10
2	90 30 02 065 00-06	hose	1.00	10
8	90 18 40 035 00 90	sleeve	1.00	2
10	90 28 10 148 00 90	accessories	1.00	2
4	90 23 01 141 00 90	back-flow preventer	1.00	2
13	90 30 11 032 00 90	disc	1.00	2