

35 517 970 Product version up to 5/12/2021



- brass, lead free
- 2x back flow preventer
- Integrated supply stops
- 2x connections 3/4" (hot/cold)
- female thread 3/4" connection
- Thermostat cartridge
- Mud guard
- Water protection
- Sound insulation

**Recommended article**

**Extension 1-1/8" -**

12 177 970 90



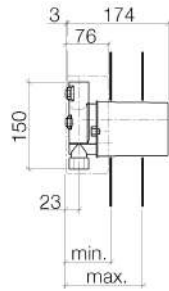
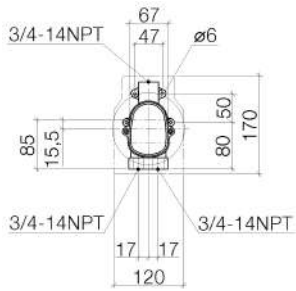
**Recommended article**

**Extension 1-3/4" -**

12 178 970 90



35 517 970 Product version up to 5/12/2021



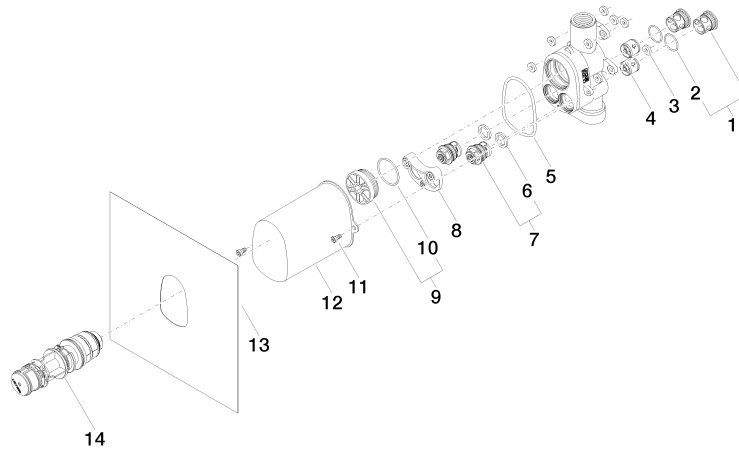
	min	max
Source	78	114
Circle	80	110
Lulu	80	110
Madison	80	110
Madison Flair	80	110
TARA LOGIC	80	110
Mela.Q2	80	110
Soul	80	110
Square	80	110
Cult	80	110
L'Aura	80	110
Combi	85	110
Just	80	155
LaFleur	95	160
SUPERNOVA	95	160
Symetria	95	160
DEQUE	95	160
Tara	95	160
MEM	115	158
CL.T	115	158

Codes & Standards

ASME A112.18.1      cUPC

Certificates and sustainability

IAPMO\_4976 (



### Spare parts list

Number	Item Number	Designation	Number of units	Lead time
8	90 12 12 218 00 90	base	1.00	2
2	09 14 10 098 90	seal	2.00	2
3	04 14 05 045 00 90	set	8.00	2
9	04 31 20 100 00 90	plug	1.00	2
12	09 21 02 103 90	cap	1.00	2
6	09 14 05 002 90	seal	2.00	2
7	90 29 05 031 00 90	insert	2.00	2
5	09 14 10 189 90	seal	1.00	2
10	09 14 10 111 90	seal	1.00	2
1	04 21 34 077 00 90	nipple	2.00	2
4	90 23 01 045 00 90	back-flow preventer	2.00	2
14	90 15 02 065 00 90	cartridge	1.00	2
13	04 14 03 073 04 90	gasket kit	1.00	2
11	90 30 30 027 00 90	screw	2.00	2