



## FG Inline duct fans

### Low to moderate airflow metal fans for various applications

- Durable, leak-free, low-noise operation
- Suitable for indoor installations
- Mount the fan at any angle/direction within the ductwork
- Built-in thermal overload protection with automatic reset
- Operable in air stream temperatures up to 140°F
- Mounting bracket and hardware included
- 5-year factory warranty

#### Airtight Design

The two-piece stamped, galvanized construction of the housing ensures durable, leak-free, and low-noise operation.

#### Versatile Application

Suitable for exhaust and supply air, making it ideal for commercial and residential ventilation applications.

#### Simple Installation

Mounting brackets and hardware are included, facilitating easy installation within ductwork at any angle or direction.

#### Simple maintenance

With no maintenance required to the fan, ventilation systems with an FG fan perform year after year as intended.

### Certifications



#### HVI Certified

HVI certification is a voluntary third-party certification programme to verify performance of residential ventilation products, in accordance with HVI/ANSI consensus test standards. Visit the HVI-Certified Products Directory to learn more.



#### Energy Star

Independently certified to meet strict standards for energy efficiency set by the United States Environmental Protection Agency (US EPA) and Department of Energy (DoE).



#### UL Listed

This product is Listed by UL. UL has rigorously tested and confirmed that this product meets all of their stringent requirements. Search the UL Product iQ directory for more information about our listed products.

## Technical parameters

### Nominal data

Voltage (nominal)	120	V
Frequency	60	Hz
Phases	1~	
Input power	175	W
Input current	2.45	A
Impeller speed	2510	rpm
Air flow	max 804	cfm
Temperature of transported air	-13 to 140	°F

### Protection/Classification

Enclosure class, motor	IP44
Insulation class	B
Certificate	AMCA Air, HVI, cULus, ENERGY STAR®

### Dimensions and weights

Duct dimension; Circular, inlet	12	in.
Duct dimension; Circular, inlet	12	in.
Duct dimension; Circular, outlet	12	in.
Duct dimension; Circular, outlet	305	mm
Weight	7.26	kg

### Optional

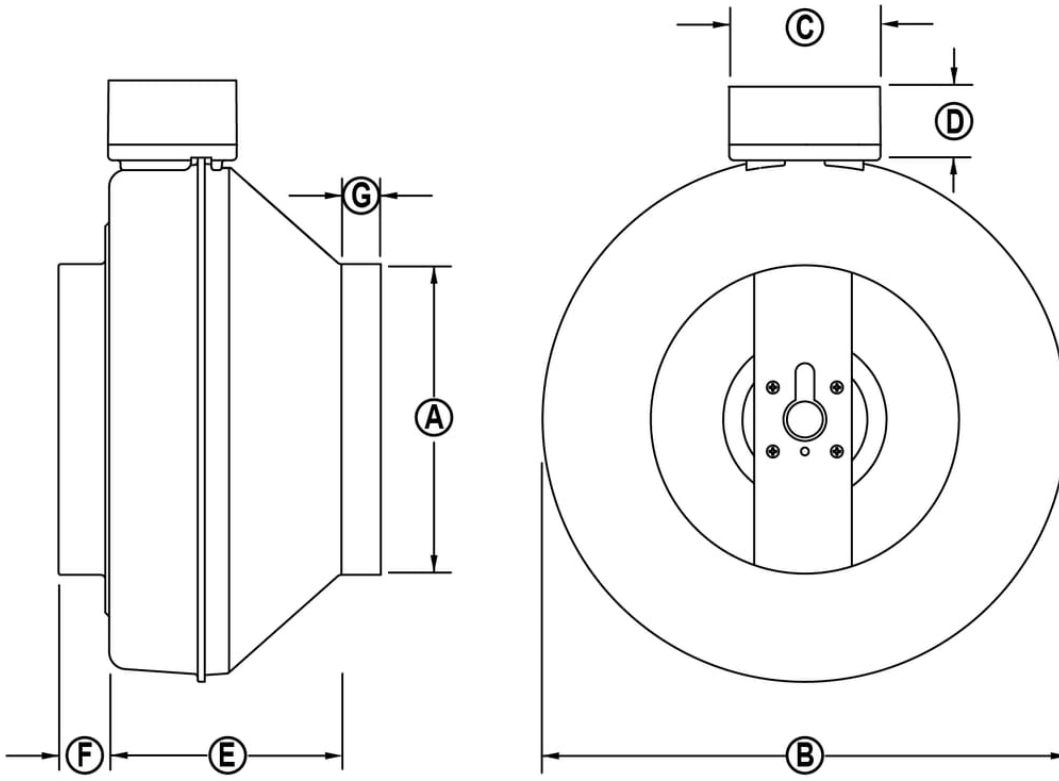
Duct connection type	Circular
Motor type	EC
Material	Metal

**Performances**

**HVI Certified Rating(s)**

<b>Static Pressure (In. Wg.)</b>	<b>Rated Airflow (CFM)</b>	<b>Rated Power (Watts)</b>
0.20	750	156

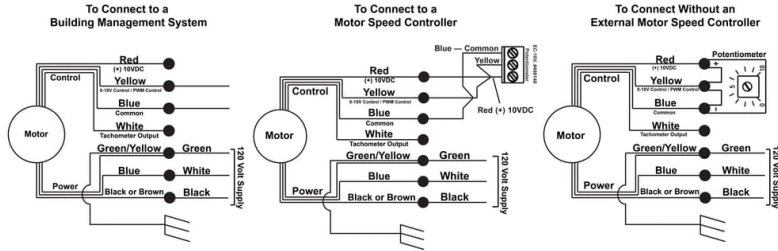
**Dimension**



Model	A	B	C	D	E	F	G
4XL EC	4 (102)	8-1/2 (216)	3-3/4 (95)	2 (51)	6-1/2 (165)	1 (25)	1 (25)
6M EC	6 (152)	13-1/8 (333)	3-3/4 (95)	2 (51)	7 (178)	1 (25)	1 (25)
8 EC	8 (203)	13-1/4 (337)	3-3/4 (95)	2 (51)	6 (152)	1 (25)	1 (25)
10 EC	10 (254)	13-1/4 (337)	3-3/4 (95)	2 (51)	4-3/4 (121)	1 1/8 (29)	1 (25)
12XL EC	12 (305)	16 (406)	3-3/4 (95)	2 (51)	6-11/16 (170)	1 1/2 (38)	1 (25)

*Dimensions are in inches (mm).*

## Wiring



## AHU Accessories

- ADC 12 Shut-off Damper w Motor (44692)
- IG 12 Inlet Guard (411128)
- RSK 12 Backdraft Damper (411117)
- FC 12 Mounting Clamps (2 pcs) (411123)
- FGR 12 Filter Cassette (44686)
- EC-10V Speed control (498148)
- IR 12 Iris Damper (411239)
- FML 12 Metal Hood Supply Air (45150)
- LD 12 Silencer (411287)

## Documents

- 400017 FG/K IOM EN
- E2326 FG-FR-FKD BR EN pages
- FG EC CSI Specification
- 483358 FG EC Submittal Sheet EN.pdf

## CSI Specification

Please note that the CSI Specification has been moved under the Documentation Tab.