



EFD Dampers

Shutter Damper with Actuator

- Spring-Return Actuators
- Energy Efficiency
- Aluminum Framework
- Nylon Bearing Swivel

Freeze Prevention

The shutter damper helps prevent the hot water coil from freezing by regulating the airflow, ensuring efficient operation even in cold conditions.

Energy Efficiency

By preventing cold air from entering the building when the unit is not operating, the damper helps maintain indoor temperatures and reduces the need for additional heating.

Airflow Control

With leakage of less than 1% of the local design airflow rate at the local maximum static pressure, the damper ensures effective airflow control.

Technical parameters

Nominal data

Voltage (nominal)	24	V
Frequency	60	Hz
Input power	2	W

Protection/Classification

Enclosure class	IP54
-----------------	------

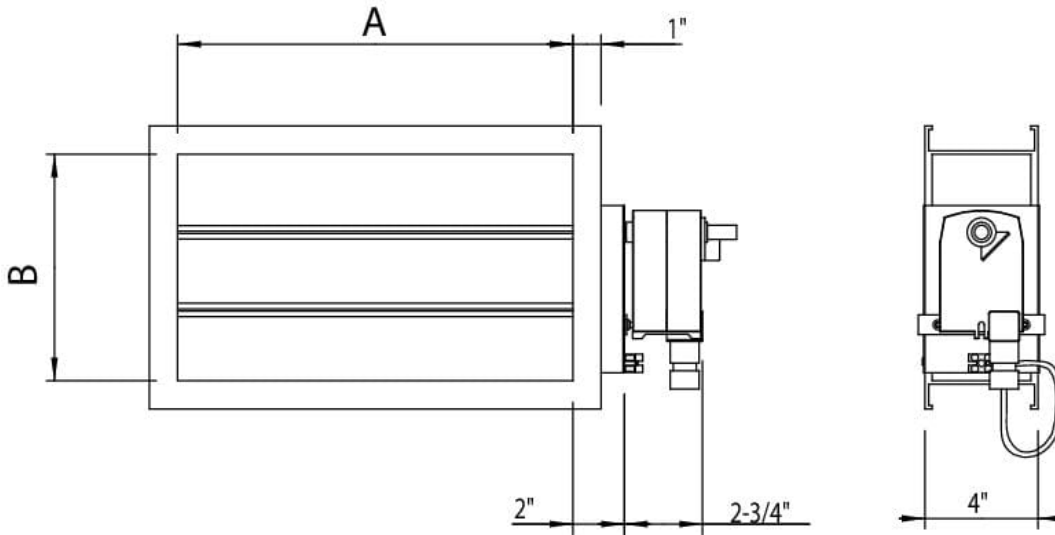
Controller and Sensors

Permitted ambient temperature	-22 to 122	°F
-------------------------------	------------	----

Dimensions and weights

Weight	2.65	kg
--------	------	----

Dimension

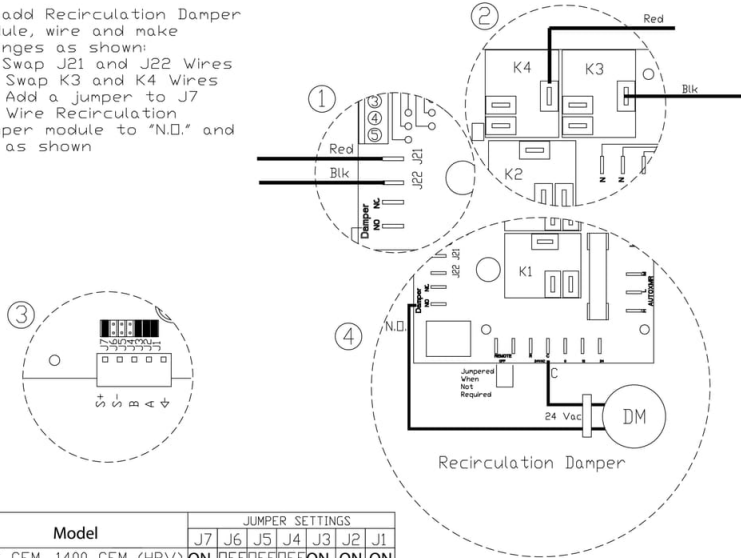


Wiring

Recirculation Defrost Wiring

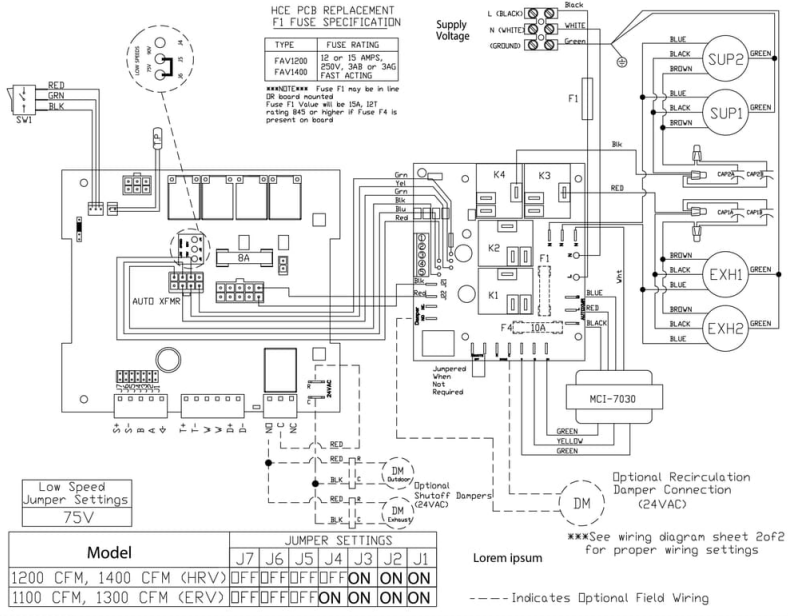
To add Recirculation Damper Module, wire and make changes as shown:

- (1) Swap J21 and J22 Wires
- (2) Swap K3 and K4 Wires
- (3) Add a Jumper to J7
- (4) Wire Recirculation Damper module to "N.O." and "C" as shown



Model	JUMPER SETTINGS						
	J7	J6	J5	J4	J3	J2	J1
1200 CFM, 1400 CFM (HRV)	ON	OFF	OFF	OFF	ON	ON	ON
1100 CFM, 1300 CFM (ERV)	ON	OFF	OFF	ON	ON	ON	ON

Fan Shutdown Defrost Wiring



Documents

· TFB24-S.PDF