

**NAX 110**

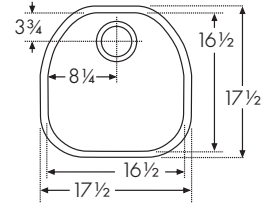


Interior Dimensions:  
16½" x 16½" x 7⅛"

Exterior Dimensions:  
17½" x 17½"

Minimum Cabinet Size: 21"

**NOBEL**



**Bottom Grid**  
Coated Stainless



NA-36C

**Cutting Board**  
Solid Wood with  
Optional Colander



NA-40C (Cutting Board)  
NA-70W (Colander)

**Small Drain Basket**  
Coated Stainless



CP-50C

**Small Drain Tray**  
White



CP-60W

**OAX 110**

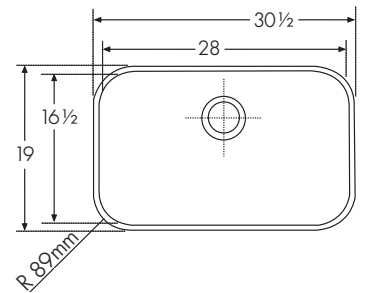


Interior Dimensions:  
27 15/16" x 16 7/8" x 8 7/8"

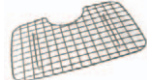
Exterior Dimensions:  
29 15/16" x 18 15/16"

Minimum Cabinet Size: 33"

**OCEANIA**



**Bottom Grid**  
Stainless



OA-36S

**Colander**  
Polished Stainless



OA-60S

**Cutting Board**  
Solid Wood



OA-40S

**OXX 110 with Integral Franke Ledge**

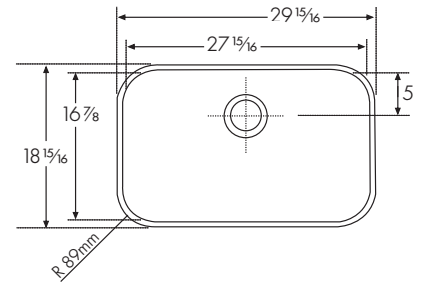


Interior Dimensions:  
27 15/16" x 16 7/8" x 8 7/8"

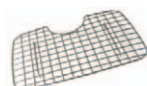
Exterior Dimensions:  
29 15/16" x 18 15/16"

Minimum Cabinet Size: 33"

**OCEANIA**



**Bottom Grid**  
Stainless



OA-36S

**Shelf Grid**  
Stainless



OA-31S

**Colander**  
Polished Stainless



OA-60S

**Cutting Board**  
Solid Wood



OA-40S

**ORX 110 with Integral Franke Ledge**

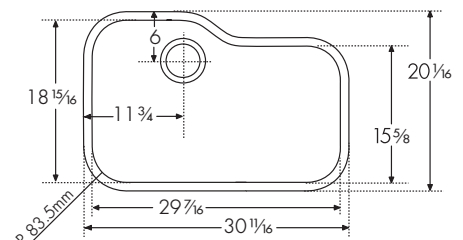


Interior Dimensions:  
29 7/16" x 18 15/16" x 9 1/16"

Exterior Dimensions:  
30 1/16" x 20 1/16"

Minimum Cabinet Size: 33"

**ORCA**

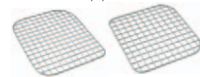


**Bottom Grid**  
Coated Stainless (C)  
or Stainless (S)



OC-36C  
OC-36S

**Shelf Grids**  
Coated Stainless (C)  
or Stainless (S)



OC-31C-LH OC-31C-RH  
OC-31S-LH OC-31S-RH

**Cutting Board**  
Solid Wood with  
Stainless Colander



OC-45SP

**Colander**  
Polished Stainless



OC-60S

**Utility Bowl**  
Black Synthetic



OC-80BK

Note: All accessories sold separately unless otherwise indicated. Design of custom accessories subject to change without notice. Franke recommends using template when making final cutout. It is necessary to have the sink and accessories on hand when making final cutout to ensure proper fit. Franke will not be responsible for any erroneous cuts in the countertop.