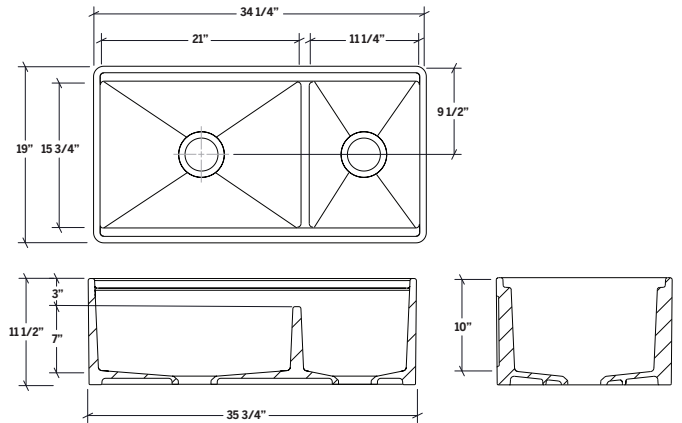


# FIRA SINK

APRON FRONT UNDERMOUNT DOUBLE BOWL KITCHEN SINK WITH LEDGE AND WALNUT BOARD











## Specifications

<b>Model Color</b>	<b>Code</b>
<input type="checkbox"/> Glossy White	103619
<input checked="" type="checkbox"/> Matte Black*	103620
<input type="checkbox"/> Taupe Grey, Matte*	103621
<b>Collection</b>	FIRA
<b>Bowl dimensions</b>	L 21" × 15 3/4" × 10" R 11 1/4" × 15 3/4" × 10"
<b>Overall dimensions</b>	35 3/4" × 19" × 11 1/2"
<b>Recommended cabinet</b>	39"
<b>Accessory material</b>	Walnut

## Included accessories

Cutting board	210060
---------------	--------

## Recommended accessories

	Drain	100080
	Grids	200942
		200943
	Serving bin	205039
	Serving bin with bowls (2)	205044
	Serving tray	205041
	Cutting board	210061
	Drying rack	215009

## Features

- Designed in Canada, handcrafted in Italy
- Integrated accessory ledge to sit full range of accessories
- Includes a solid walnut cutting board
- Flat apron front design
- Two deep 10" bowls and 3/4" thick walls for optimized work space
- Product dimensional variability  $\pm 3/16"$ , due to manufacturing process
- Made of fireclay and glazed on all sides
- Two center 3-1/2" drains
- Sloped bottom for maximized drainage
- Waste disposal unit compatible, recommended to confirm waste disposal or drain maximal thickness specifications
- No template provided, recommended to have the sink on hand for final sizing of cabinet and countertop
- Certifications: ASME A112.19.2/CSA B45.1

## Warranty

JULIEN Inc. offers warranties against manufacturing defects on most of its products, please visit our website [homerefinelements.ca](http://homerefinelements.ca) for complete product coverage.

\*These colors are a limited edition offering