



Type 43 drill stand

For Neck diameter
43mm Models



Part No.
A-36712

Flexible bit

(Include Phillips bit No.2-30, Slotted bit 6x30.
Flexible extension for driving into hard to access corners)



L (mm)	Part No.
190	A-86963

Socket

(With pin and O ring)



A (mm)	L (mm)	Part No.
--------	--------	----------

For Impact Wrenches with 1/2" square drive.
For Model: TW0200, TW0350

10	38	B-10497
12	38	A-89931
12	75	134867-5
13	38	134825-1
13	52	134827-7
14	38	134826-9
14	52	134828-5
16	38	B-10506
17	38	134829-3
17	52	134830-8
19	38	134831-6
19	52	134832-4
19	78	134837-4
21	38	134838-2
21	52	134833-2
21	78	134839-0
22	38	134851-0
22	52	134834-0
23	38	134840-5
23	52	134835-8
24	45	134841-3
24	52	134836-6
26	50	134842-1
26	78	134843-9

For Impact Wrenches with 1/2" square drive.
For Model: TW0350

27	50	134844-7
27	78	134845-5
30	50	134846-3
30	78	134847-1
32	50	134848-9
32	78	134849-7

For Impact Wrenches with 19mm(3/4") square drive.
For Model: 6906

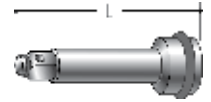
17	50	A-85494
17	95	A-85503
19	50	A-85519
19	95	A-85525
21	52	A-85531
21	95	A-85547
22	52	A-85553
22	95	A-85569
24	52	A-85575
24	95	A-85581
26	52	134853-6
26	95	134854-4
27	52	134855-2
27	95	134856-0
30	52	134857-8
30	95	134858-6
32	52	134871-4
32	95	134859-4
35	56	134860-9
35	95	134861-7
36	56	134862-5
36	95	134863-3

For Impact Wrenches with 25mm (1") square drive.
For Model: 6910, TW1000

35	80	134864-1
36	80	134865-9
41	80	134872-2

Extension bar

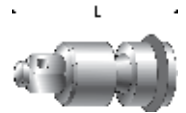
(With pin and O ring)
For narrow places



Model No.	L (mm)	Part No.
TW0200, TW0350	100	134874-8
6906	150	134997-2
6910, TW1000	200	134870-6

Universal joint

(With pin and O ring)
For use in tight areas where the tool
cannot be held in line with bolt or nut



Model No.	L (mm)	Part No.
TW0200, TW0350	84	134877-2
6906	105.5	134998-0

Bit adapter assembly

(With pin and O ring)



Model No.	Part No.
TW0200	134873-0

Grip assembly

Model No.	Part No.
6906	122464-9
6910	123018-5
TW1000	122727-3



Sleeve size reference table

Inner sleeve Outer sleeve
For Model: 6922NB *Type F

Sleeve	Bolt Size	L (mm)	Part No.
Outer sleeve	M16	35	764362-7
Inner sleeve	M16	36	764416-0
Outer sleeve	M20	37	764361-9
Inner sleeve	M20	38	764417-8
Outer sleeve	M22	39	153909-6
Inner sleeve	M22, 7/8"	39	764418-6
Outer sleeve	M22, 7/8"	85	764364-3
Inner sleeve	M22, 7/8"	85	764352-0
Outer sleeve	5/8"	35	764362-7
Inner sleeve	5/8"	36	764420-9
Outer sleeve	3/4"	37	764361-9
Inner sleeve	3/4"	38	764419-4
Outer sleeve	3/4"	83	764363-5
Inner sleeve	3/4"	84	764353-8

For Model: 6924N

Outer sleeve	M22	49	194033-6
Inner sleeve	M22, 7/8"	49	194310-6
Outer sleeve	7/8"	49	194092-0
Inner sleeve	1"		194312-2
Outer sleeve	M24, 1"	49	194034-4
Inner sleeve	M24	49	194311-4