



SERVICE PARTS LIST

BULLETIN NO.
54-49-2875

SPECIFY CATALOG NO. AND SERIAL NO. WHEN ORDERING PARTS		REVISED BULLETIN	DATE
M18 FUEL™ TELESCOPING POLE SAW			Jan. 2025
CATALOG NO.	3013-20	SERIAL NO.	N26A
		WIRING INSTRUCTION See Page 6 and 7	

FIG.	PART NO.	DESCRIPTION OF PART	NO. REQ.
1	05-74-0516	M4 x 67mm Pan Hd. T-20 Machine Screw	(3)
9	06-82-4003	M4 x 16mm Pan Hd. T-20 ST Screw	(28)
16	-----	Power Head Housing - Cover	(1)
17	05-88-5375	M4 x 13.5mm Pan Hd. T-20 ST Screw	(1)
18	-----	Power Head Guard - Cover	(1)
19	05-88-1257	M4 x 22mm Pan Hd. T-20 ST Screw	(2)
20	-----	Power Head Housing - Support	(1)
21	-----	Power Head Guard - Support	(1)
28	05-78-0029	M5 x 8mm Pan Hd. T-25 Machine Screw	(3)
29	05-74-0315	M5 x 17mm Pan Hd. T-25 Machine Screw	(3)
31	06-82-4003	M4 x 16mm Cap Hd. Hex Recess Mach. Sc.	(4)
32	05-74-0538	M3 x 3.5mm Pan Hd. Phillips Machine Scr.	(1)
37	40-50-0373	Action Lever Spring	(1)
39	40-50-0374	Trigger Spring	(1)

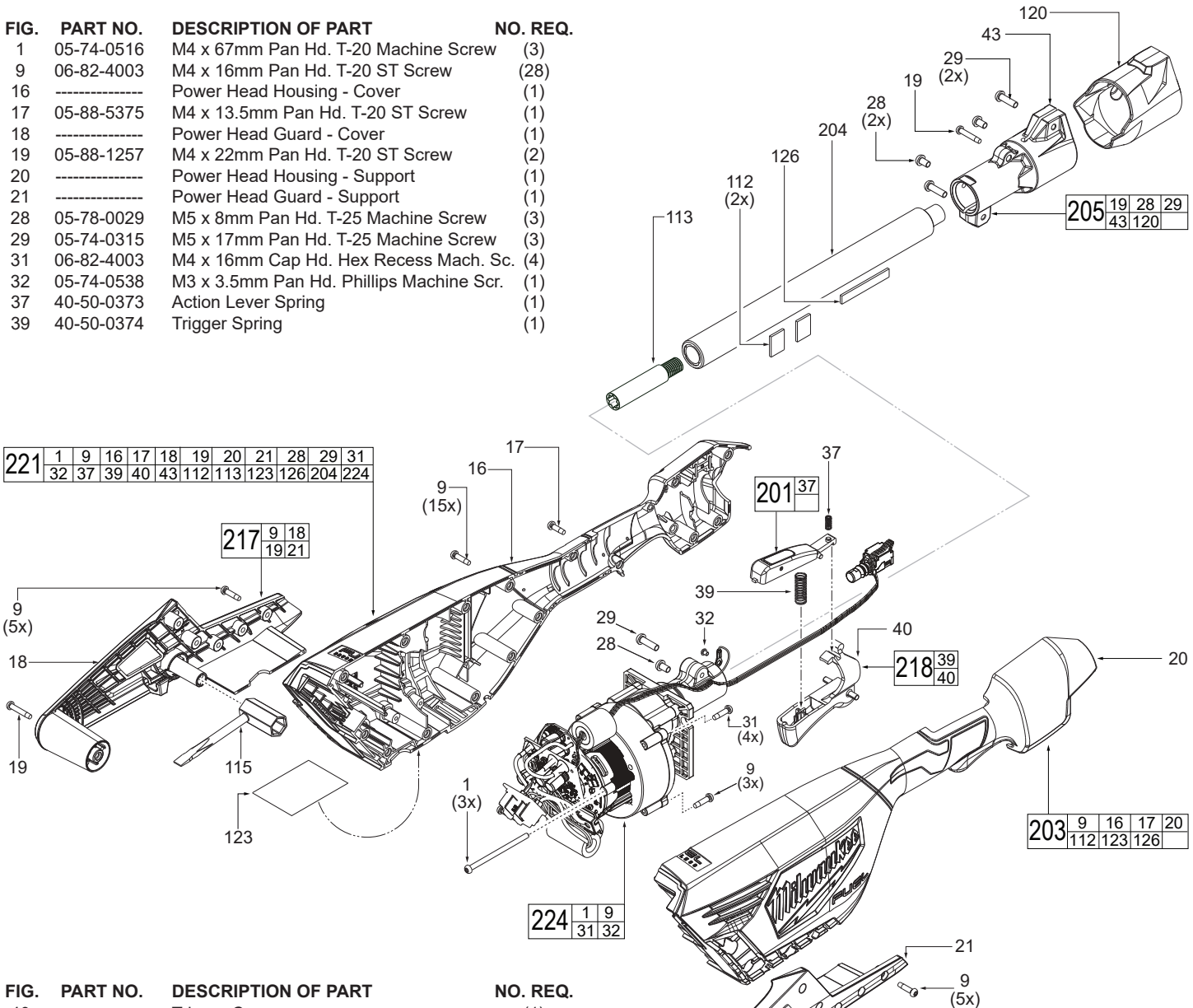


FIG.	PART NO.	DESCRIPTION OF PART	NO. REQ.
40	-----	Trigger Cap	(1)
43	-----	Tube Coupler	(1)
112	44-52-0009	Rubber Foam	(2)
113	42-04-0101	Sleeve Adapter	(1)
115	45-96-1001	Screwdriver / Wrench	(1)
120	45-12-0018	Rubber Boot	(1)
123	12-20-0222	Service Nameplate	(1)
126	44-52-0004	Rubber Foam	(1)
201	31-92-0013	Trigger Lock-Out Service Assembly	(1)
203	31-44-0164	Power Head Housing Service Kit	(1)
204	45-22-0128	Coupler Tube Service Assembly	(1)
205	42-90-0108	Tube Coupler Service Kit	(1)
217	43-54-0028	Impact Guard Service Kit	(1)
218	31-92-0029	Trigger Service Kit	(1)
221	14-38-2219	Power Head Service Assembly	(1)
224	14-30-1924	Motor and Gearcase Assembly	(1)

EXAMPLE:
Component Parts (Small #)
Are Included When Ordering
The Assembly (Large #).

FIG. NOTES

- 123 Prior to taking tool apart, use a sharp razor blade to score the center line of nameplate. This will allow housing halves (16 and 20) to separate when housing screws are removed.
- 123 A clean, dry surface is essential for the proper performance for any adhesive system. The area intended for application of any adhesive label or nameplate must be prepared by cleaning with isopropyl alcohol. The solvent is to be applied with a clean, lint free applicator and the surface allowed to dry before applying any label or nameplate.

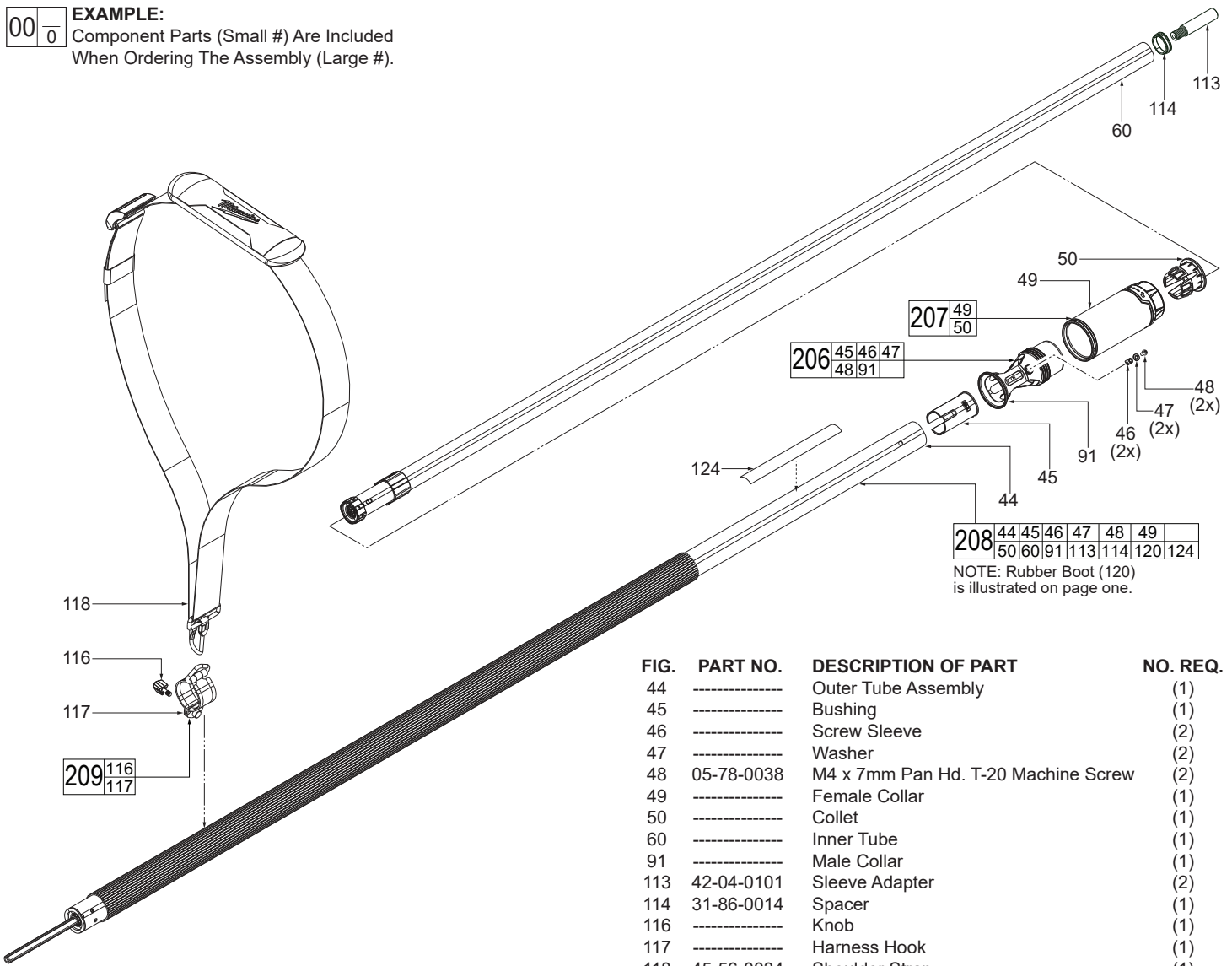
SCREW TORQUE SPECIFICATIONS ARE ON PAGE 5

LUBRICATION NOTES ARE ON PAGE 2

00 0

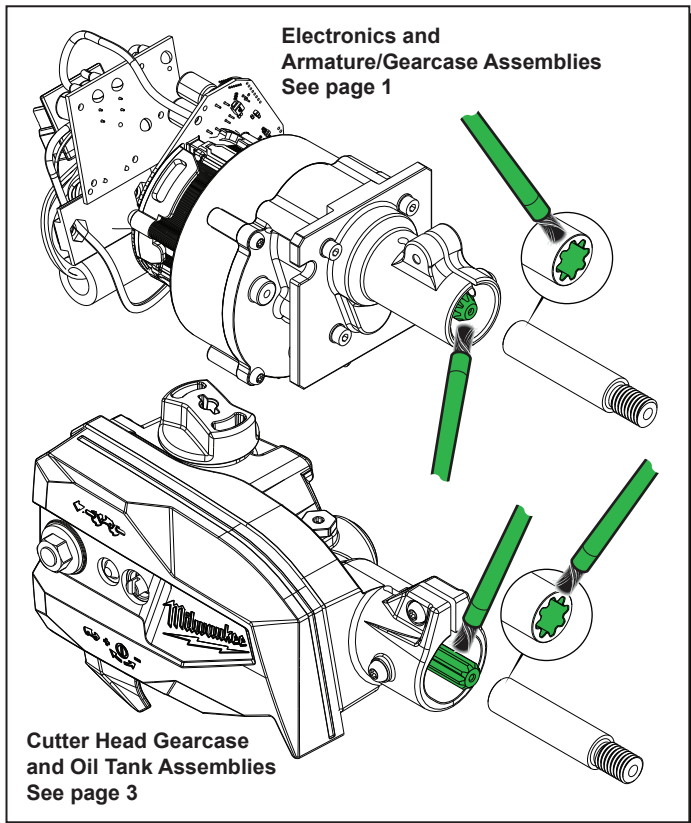
EXAMPLE:

Component Parts (Small #) Are Included
When Ordering The Assembly (Large #).



NOTE: Rubber Boot (120) is illustrated on page one.

FIG.	PART NO.	DESCRIPTION OF PART	NO. REQ.
44	-----	Outer Tube Assembly	(1)
45	-----	Bushing	(1)
46	-----	Screw Sleeve	(2)
47	-----	Washer	(2)
48	05-78-0038	M4 x 7mm Pan Hd. T-20 Machine Screw	(2)
49	-----	Female Collar	(1)
50	-----	Collet	(1)
60	-----	Inner Tube	(1)
91	-----	Male Collar	(1)
113	42-04-0101	Sleeve Adapter	(2)
114	31-86-0014	Spacer	(1)
116	-----	Knob	(1)
117	-----	Harness Hook	(1)
118	45-56-0034	Shoulder Strap	(1)
120	45-12-0018	Rubber Boot (Not Shown)	(1)
124	10-20-0054	Warning Label	(1)
206	42-76-0097	Male Collar / Bushing Service Kit	(1)
207	42-76-0099	Female Collar / Collet Service Assembly	(1)
208	42-82-0013	Extension Tube Service Assembly	(1)
209	43-75-0028	Harness Hook Service Assembly with Knob	(1)



SCREW TORQUE SPECIFICATIONS ARE ON PAGE 5

FIG. NOTES

124 A clean, dry surface is essential for the proper performance for any adhesive system. The area intended for application of any adhesive label or nameplate must be prepared by cleaning with isopropyl alcohol. The solvent is to be applied with a clean, lint free applicator and the surface allowed to dry before applying any label or nameplate.

LUBRICATION

Type 'J' Grease, 49-08-4220 (1 lb. can)

When servicing, remove 90-95% of the existing grease prior to installing Type 'J'. Original grease may be similar in color but not compatible with 'J'.

Regarding parts to be lubricated:
Apply a light coating of grease to all highlighted parts shown prior to installation.

00 0

EXAMPLE:

Component Parts (Small #) Are Included
When Ordering The Assembly (Large #).

FIG.	PART NO.	DESCRIPTION OF PART	NO. REQ.
28	05-78-0029	M5 x 8mm Pan Hd. T-25 Machine Screw	(1)
29	05-74-0315	M5 x 17mm Pan Hd. T-25 Machine Screw	(1)
48	05-78-0038	M4 x 7mm Pan Hd. T-20 Machine Screw	(1)
55	-----	Ball Bearing	(1)

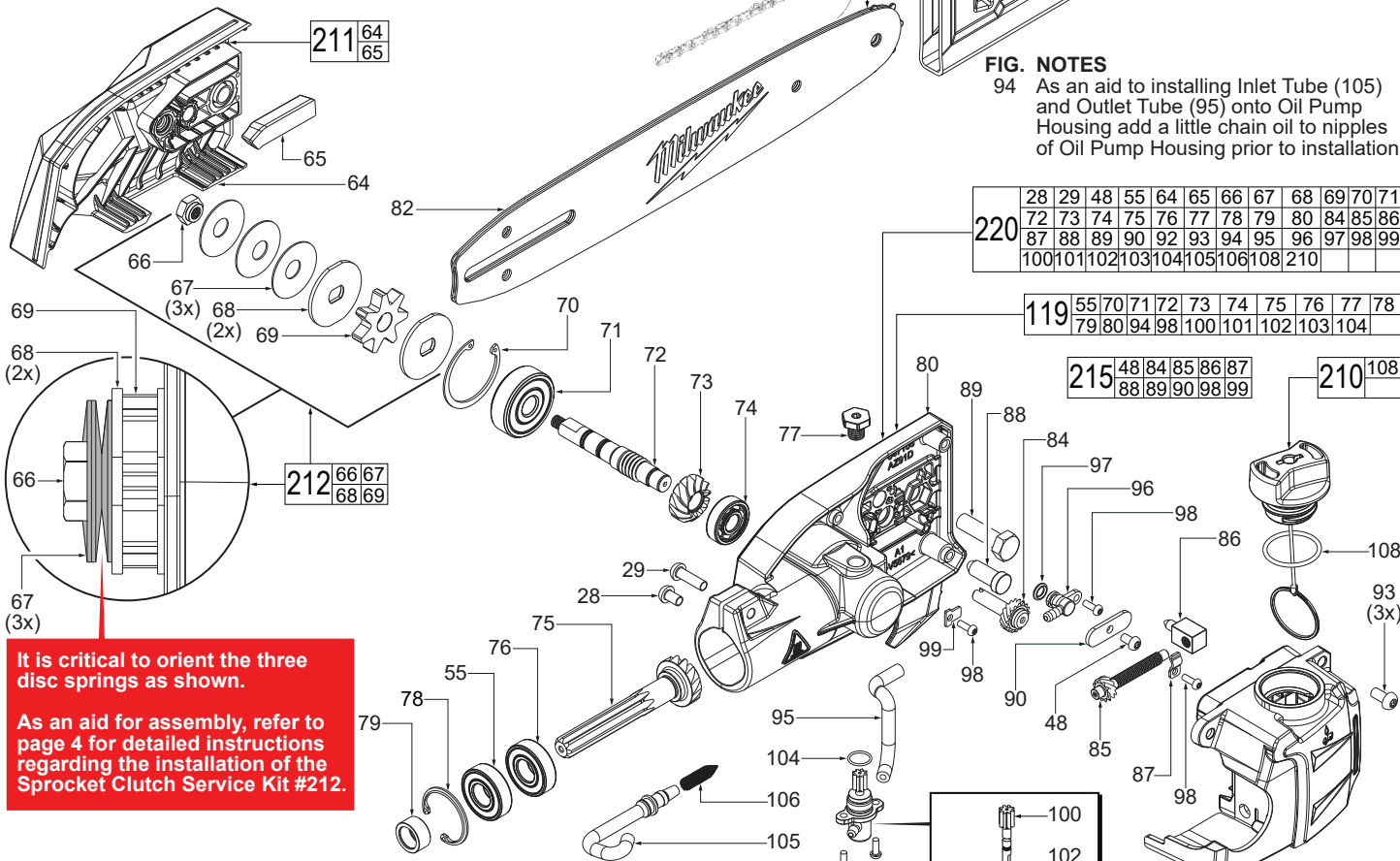


FIG. NOTES

94 As an aid to installing Inlet Tube (105) and Outlet Tube (95) onto Oil Pump Housing add a little chain oil to nipples of Oil Pump Housing prior to installation.

220	28	29	48	55	64	65	66	67	68	69	70	71
	72	73	74	75	76	77	78	79	80	84	85	86
	87	88	89	90	92	93	94	95	96	97	98	99
	100	101	102	103	104	105	106	108	210			

119	55	70	71	72	73	74	75	76	77	78
	79	80	94	98	100	101	102	103	104	

215	48	84	85	86	87
	88	89	90	98	99

210	108
-----	-----

It is critical to orient the three disc springs as shown.

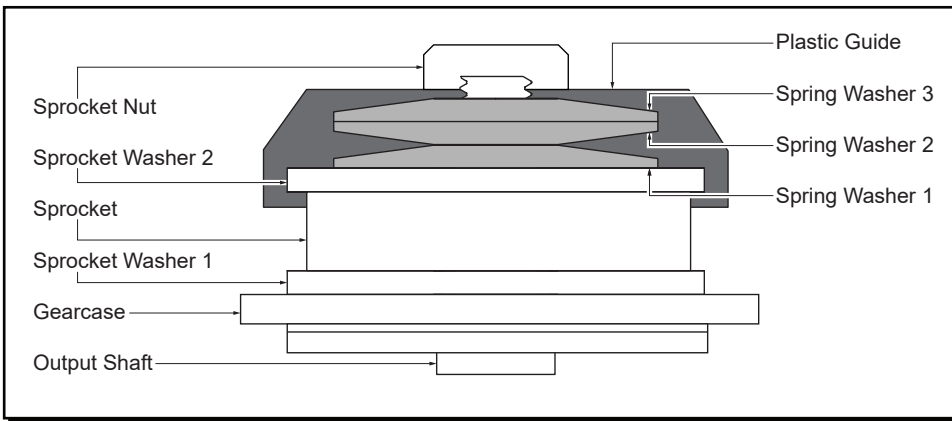
As an aid for assembly, refer to page 4 for detailed instructions regarding the installation of the Sprocket Clutch Service Kit #212.

FIG.	PART NO.	DESCRIPTION OF PART	NO. REQ.
64	-----	Sprocket Cover w/Self Contained Flange Nut	(1)
65	-----	Insert Block	(1)
66	-----	Shaft Nut	(1)
67	-----	Spring Washer	(3)
68	-----	Sprocket Washer	(2)
69	-----	Sprocket	(1)
70	-----	Bevel Retaining Ring	(1)
71	-----	Ball Bearing	(1)
72	-----	Input Shaft	(1)
73	-----	Bevel Gear	(1)
74	-----	Ball Bearing	(1)
75	-----	Bevel Pinion	(1)
76	-----	Ball Bearing	(1)
77	05-85-0080	M8 x 1.25 Hex Hd. T-25 Machine Screw	(1)
78	-----	Bevel C-Ring	(1)
79	-----	Stopper Bushing	(1)
80	-----	Cutter Head Gearcase	(1)
81	49-16-2759	10" Chain, 3/8" Pitch (Accessory)	(1)
82	49-16-2760	10" Chain Bar (Accessory)	(1)
83	49-62-0012	Scabbard for 10" Bar (Accessory)	(1)
84	-----	Chain Tensioner Adjustment Screw	(1)
85	-----	Tensioning Main Screw	(1)
86	-----	Chain Tension Post	(1)
87	-----	Tensioning Rack Retention Tab	(1)
88	-----	Location Pin	(1)
89	05-85-0012	M8 x 28mm Hex Hd. Machine Screw	(1)
90	-----	Stamping Plate	(1)
92	-----	Oil Tank	(1)
93	05-78-0024	M5 x 10mm Pan Hd. T-25 Machine Screw	(3)
94	-----	Oil Pump Housing	(1)
95	-----	Outlet Tube	(1)

FIG.	PART NO.	DESCRIPTION OF PART	NO. REQ.
96	-----	Connector	(1)
97	34-40-4002	O-Ring	(1)
98	05-81-0015	M3 x 8.5mm Pan Hd. T-10 Machine Screw	(5)
99	-----	Tensioning Rack Retention Tab	(1)
100	-----	Pump Gear	(1)
101	-----	Pump Body Pin	(1)
102	-----	Pump Gear O-Ring	(1)
103	-----	Pump Body	(1)
104	-----	Pump Housing O-Ring	(1)
105	-----	Inlet Tube	(1)
106	-----	Cone Spring	(1)
108	34-40-0228	Oil Cap O-Ring	(1)
119	14-30-0071	Cutter Head Gearcase Assembly	(1)
210	42-52-0051	Oil Cap Assembly	(1)
211	45-44-0019	Sprocket Cover Service Kit	(1)
212	32-10-0023	Sprocket Clutch Service Kit	(1)
213	42-54-0014	Oil Pump Service Assembly	(1)
214	45-66-0021	Oil Tank Service Kit	(1)
215	42-60-0031	Chain Tensioning Service Kit	(1)
220	14-38-0063	Cutting Head Service Assembly	(1)

SCREW TORQUE SPECIFICATIONS ARE ON PAGE 5

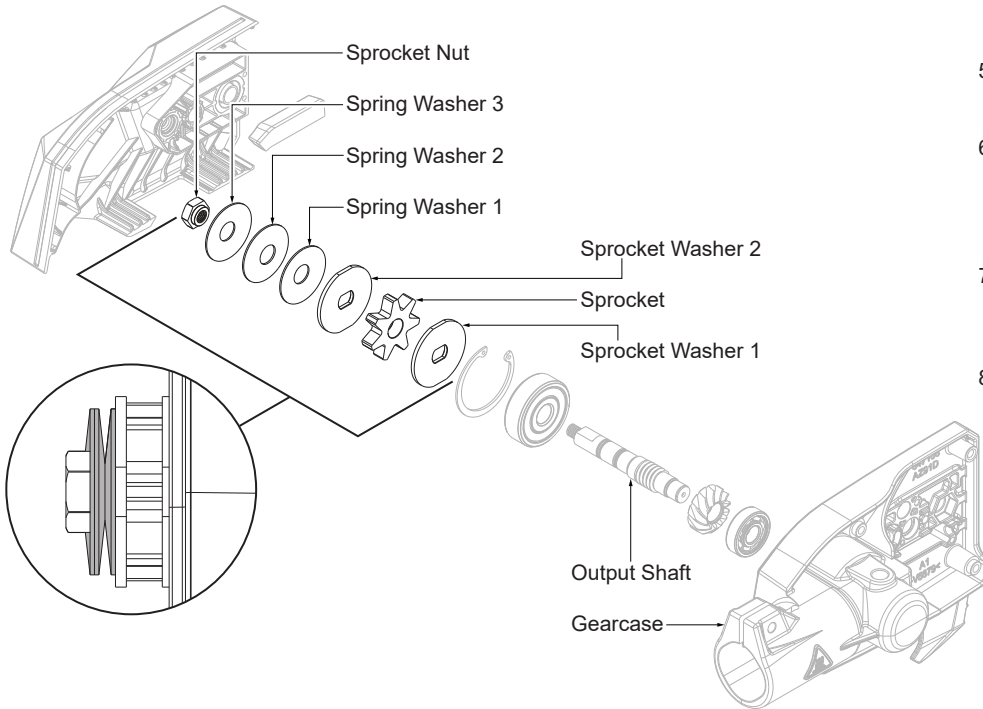
INSTALLATION OF #212, 32-10-0023 SPROCKET CLUTCH SERVICE KIT

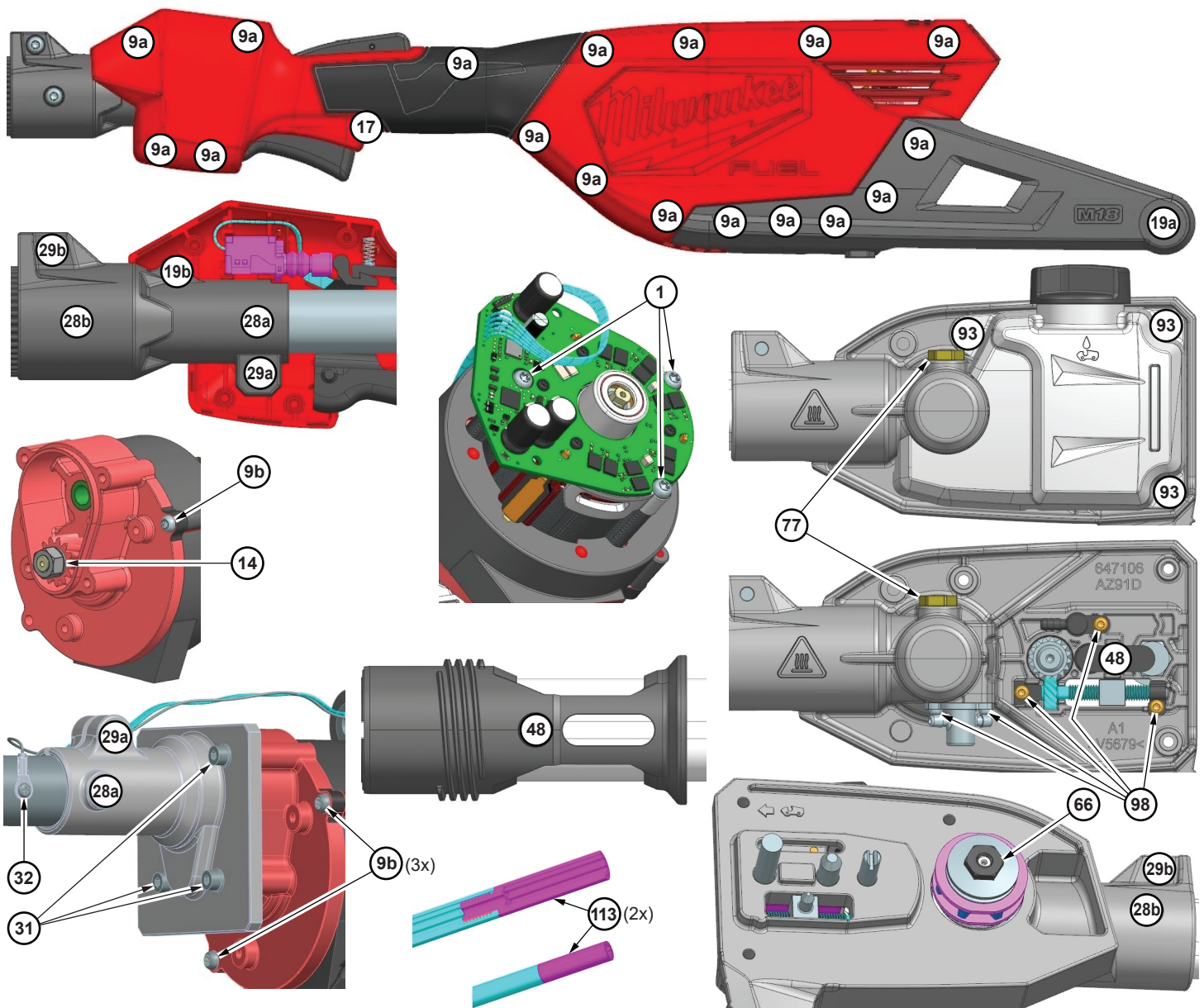


INSTALLING THE SPROCKET CLUTCH SERVICE KIT

There are a series of 3 Spring Washers that must be oriented in a specific way for the tool to function properly.

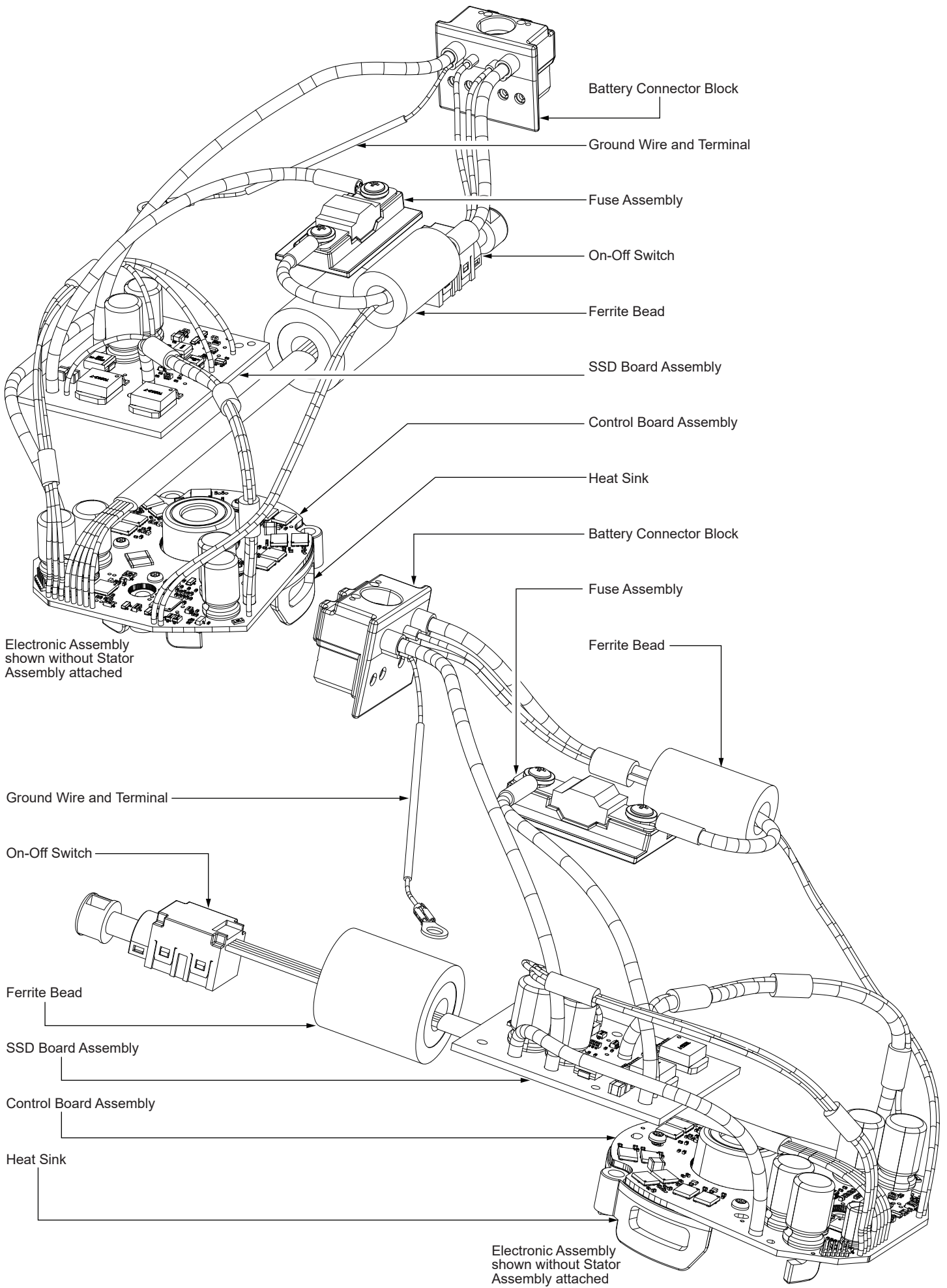
1. **WARNING!** Remove battery to avoid starting the tool.
2. Install Sprocket Washer 1 onto Output Shaft, ensure it is seated on the shoulder of the Output Shaft.
3. Install Sprocket onto Output Shaft, ensure it is seated on Sprocket Washer 1.
4. Install the Sprocket Washer 2, ensure it is seated on the Sprocket.
5. Install Plastic Guide onto second Sprocket Washer.
6. Install the 3 Spring Washers in the correct orientation, as shown in detail on the left. The Plastic Guide will help ensure the Spring Washers are aligned properly.
7. Fasten the Sprocket Nut to the threads on the end of the Output Shaft. Tighten to 7 ft-lbs. with a calibrated device.
8. Remove and discard Plastic Guide.

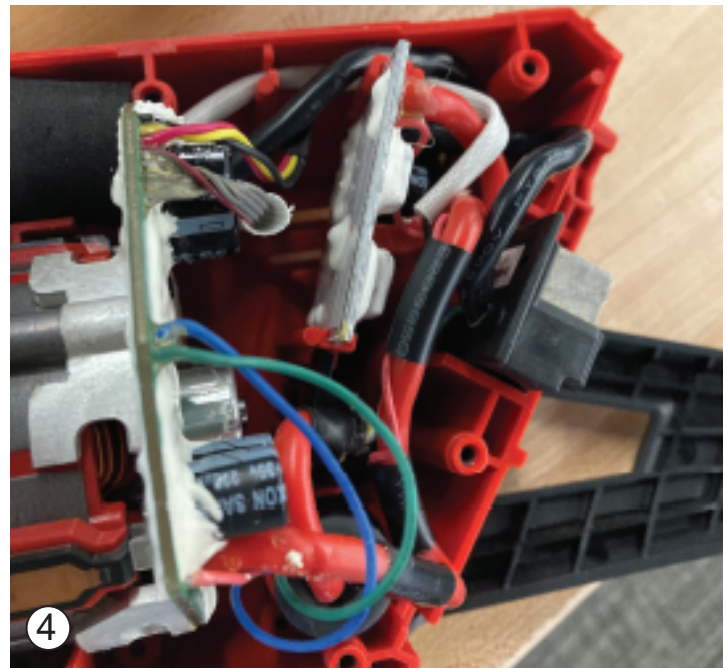
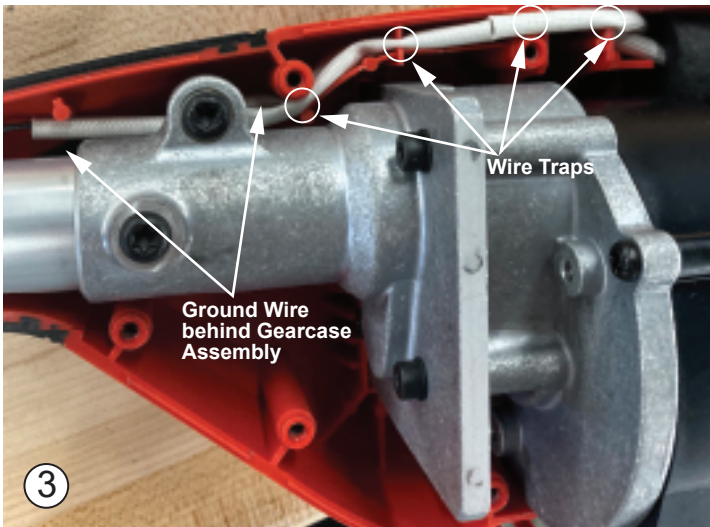
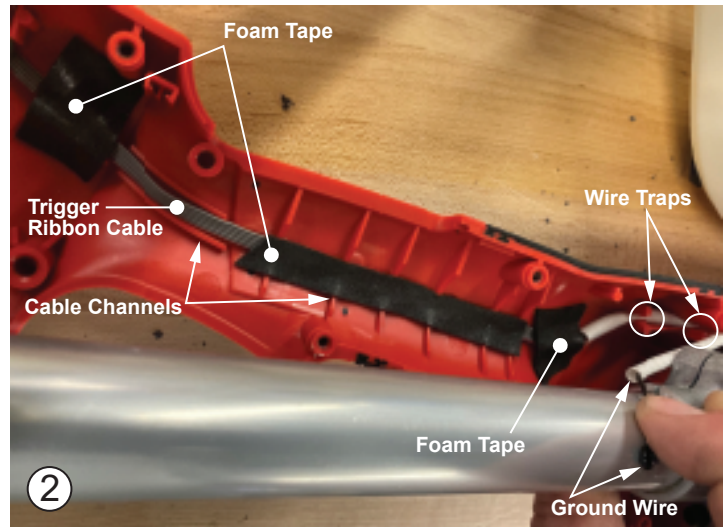
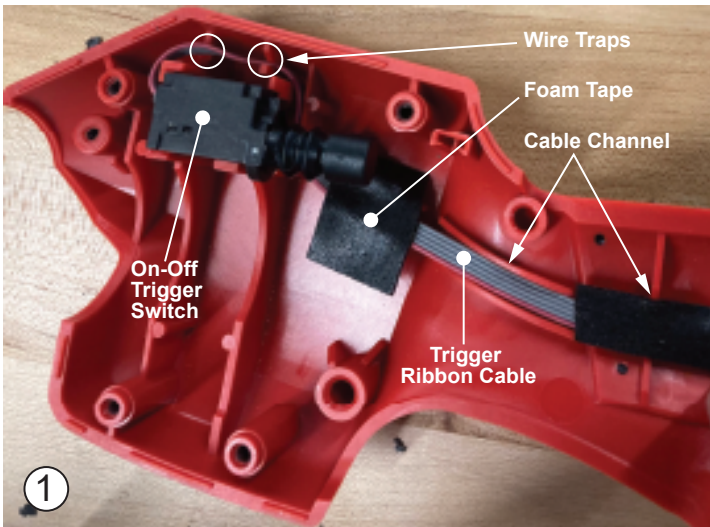




SCREW TORQUE SPECIFICATIONS

FIG.	PART NO.	DESCRIPTION OF FASTENER	WHERE USED	SEAT TORQUE	
				(kgf-cm)	(lb-in)
1	05-74-0193	M4 x 67mm Pan Hd. T-20 Machine Screw	Electronics Service Assembly	25±3	21.6±2.6
9a	06-82-4003	M4 x 16mm Pan Hd. T-20 ST Screw	Power Head Housing & Power Head Guard	14±2	12.1±1.7
9b	06-82-4003	M4 x 16mm Pan Hd. T-20 ST Screw	Motor Housing	14±2	12.1±1.7
17	05-88-5375	M4 x 13.5mm Pan Hd. T-20 ST Screw	Power Head Housing	14±2	12.1±1.7
19a	05-88-1257	M4 x 22mm Pan Hd. T-20 ST Screw	Power Head Guard	16±2	13.8±1.7
19b	05-88-1257	M4 x 22mm Pan Hd. T-20 ST Screw	Tube Coupler	14±2	12.1±1.7
28a	05-78-0029	M5 x 8mm Pan Hd. T-25 Machine Screw	Tube Coupler & Armature/Gearcase Service Assy.	35±3	30.3±2.6
28b	05-78-0029	M5 x 8mm Pan Hd. T-25 Machine Screw	Tube Coupler & Cutter Head Gearcase	50±3	43.3±2.6
29a	05-74-0315	M5 x 17mm Pan Hd. T-25 Machine Screw	Tube Coupler & Armature/Gearcase Service Assy.	35±3	30.3±2.6
29b	05-74-0315	M5 x 17mm Pan Hd. T-25 Machine Screw	Tube Coupler & Cutter Head Gearcase	50±3	43.3±2.6
31	06-82-4003	M4 x 16mm Cap Hd. Hex Recess Mach. Screw	Armature/Gearcase Service Assembly	20±2	17.3±1.7
32	05-74-0538	M3 x 3.5mm Pan Hd. Phillips Machine Scr.	Ground Wire Terminal	5.5±0.5	4.7±0.4
48	05-78-0038	M4 x 7mm Pan Hd. T-20 Machine Screw	Male Collar & Stamping Plate	18±2	15.6±1.7
--	-----	Self Contained M8 Flange Nut (See page 3)	Sprocket Cover	140±10	121±8.6
66	-----	Shaft Nut	Input Shaft	95±5	82.4±4.3
77	05-85-0080	M8 x 1.25 Hex Hd. T-25 Machine Screw	Cutter Head Gearcase	45±3	39±2.6
93	05-78-0024	M5 x 10mm Pan Hd. T-25 Machine Screw	Oil Tank	17±2	14.7±1.7
98	05-81-0015	M3 x 8.5mm Pan Hd. T-10 Machine Screw	Oil Pump Housing/Tensioning Rack Retention Tabs	5±0.5	4.3±0.4
98	05-81-0015	M3 x 8.5mm Pan Hd. T-10 Machine Screw	Connector	5±0.5	4.3±0.4
113	42-04-0101	Sleeve Adapter	Coupler Tube & Inner Tube	33±3	285.6±2.6





1. Route Trigger Switch wires in wire traps as shown. Be sure to push wires completely down in traps. Place trigger ribbon cable in cable channel and secure with foam tape. Install Trigger Switch firmly and squarely in switch cavity of the Power Head Housing Support.
2. Prior to installing the Electronics and Gearcase Assemblies, continue to route trigger ribbon cable through cable channels of Power Head Housing Support. Be sure the ribbon cable is pressed flat in channel, (Not lifting onto ribbed surfaces causing wire pinching). Secure the trigger ribbon cable with foam tape as shown.
3. Place Electronics and Gearcase Assemblies into Housing Support. Route Trigger Ribbon and Ground Wire through the wire traps shown, being sure wires are fully seated in wire traps and are not falling out.
- 4,5 Photos depict components of the electronics package (See page 5). Install all components firmly and squarely in corresponding cavities of the Power Head Housing Support. Route all wires as shown being sure those placed in wire traps are pressed completely down in bottom of traps. Tuck all excess wires down into handle cavities to avoid pinching when the Power Head Housing Cover is installed.

As an aid to reassembly, take notice of wire routings and position in wire guides and traps while dismantling tool.

Be sure that all components of the electronics assembly are seated firmly and squarely in housing recesses.

Avoid pinched wires, be sure that all wires and sleeves are pressed completely down in wire traps.

Prior to securing housing cover onto the housing support, be sure that there are no interferences.

Before installing the battery, check for proper functionality of shuttles, buttons and triggers.

Install battery and depress switch trigger to assure tool is operating properly.

