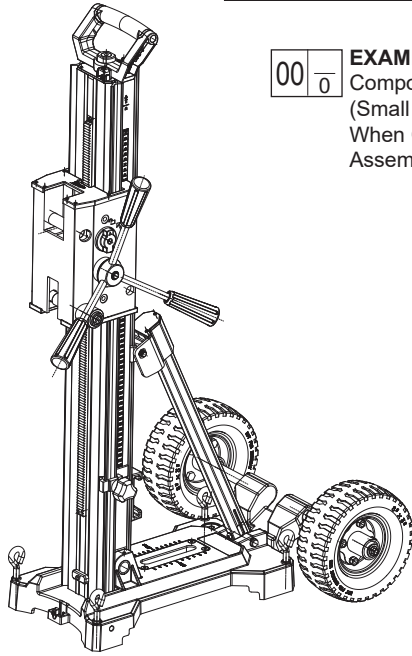




SERVICE PARTS LIST

BULLETIN NO.
54-46-0015

SPECIFY CATALOG NO. AND SERIAL NO. WHEN ORDERING PARTS		REVISED BULLETIN	DATE
Core Rig STAND			Nov. 2023
CATALOG NO.	3302	WIRING INSTRUCTION	
SERIAL NO.	N40A		



EXAMPLE:

00	0
----	---

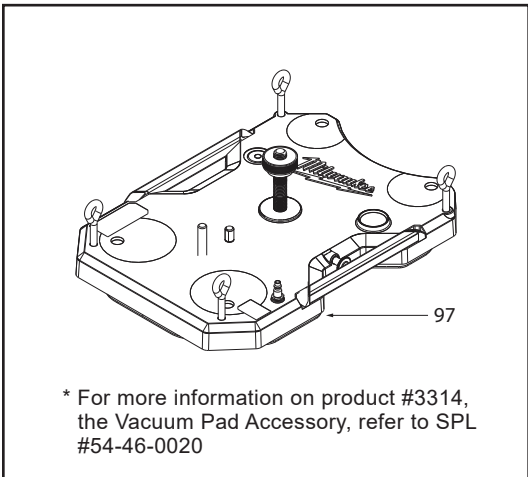
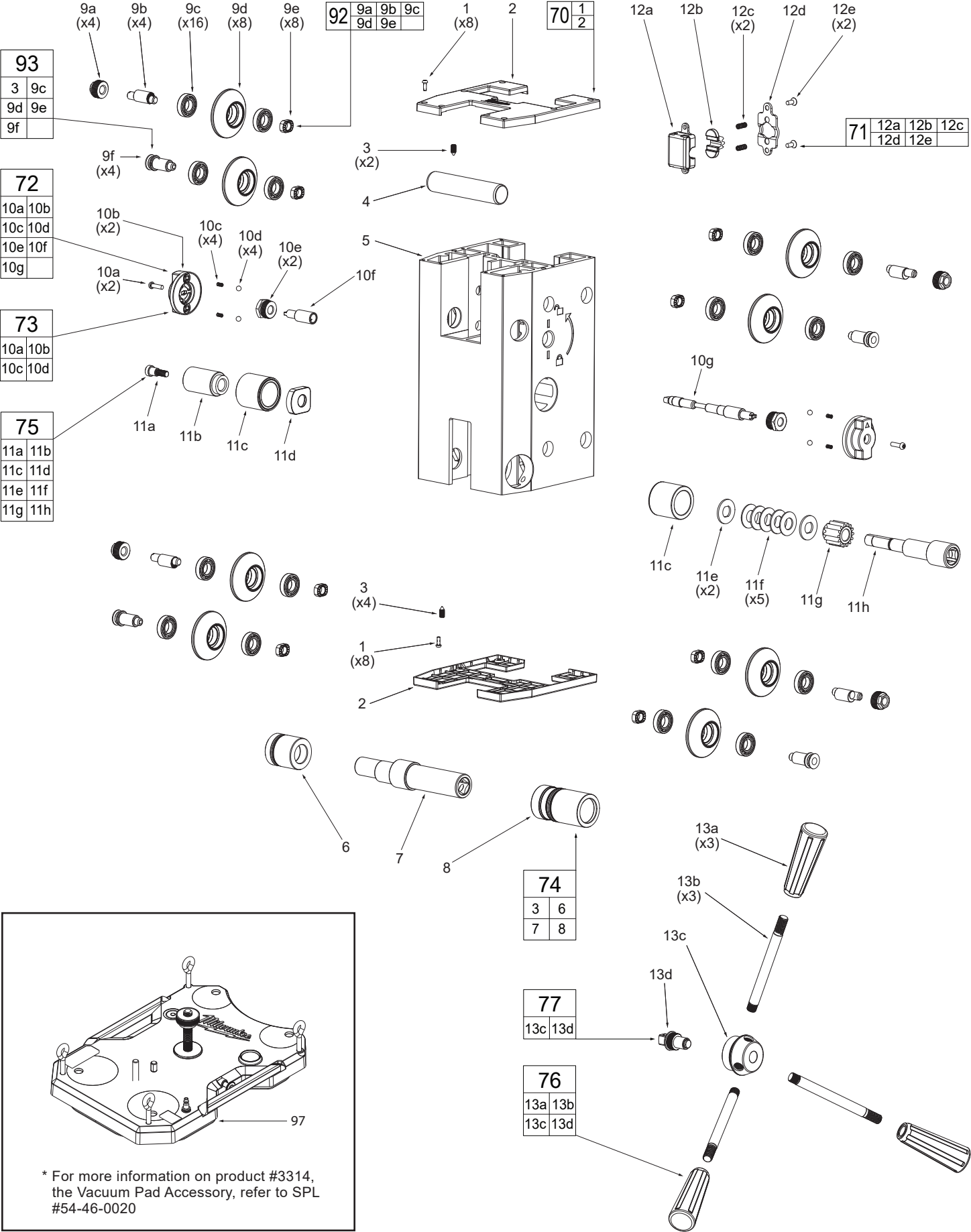
 Component Parts
 (Small #) Are Included
 When Ordering The
 Assembly (Large #).

FIG.	PART NO.	DESCRIPTION OF PART	NO. REQ.
1	05-81-0015	M3x8.5mm Pan Hd. Torx T-10 Screw	(23)
2	-----	Carrier Cap	(2)
3	06-83-0014	Set Screw M5	(8)
4	44-60-7105	Hook Tube Pin	(1)
5	42-68-5345	Carrier	(1)
6	-----	Threaded Insert	(1)
7	-----	Square Drive Lock Pin	(1)
8	-----	Retaining Collar	(1)
9a	-----	Thread Nut	(4)
9b	-----	Eccentric Shaft	(4)
9c	-----	Ball Bearing	(16)
9d	-----	Carrier Wheel	(8)
9e	-----	Bushing	(8)
9f	-----	Concentric Shaft	(4)
10a	05-74-0078	M4x12mm Torx T-20 Screw	(2)
10b	-----	Lock Handle	(2)
10c	-----	.7 Wire Diameter Spring	(4)
10d	-----	Steel Ball .5mm	(4)
10e	-----	Nut with Shoulder	(2)
10f	-----	Lock Shaft End	(1)
10g	-----	Cam Lock Shaft	(1)
11a	05-88-0052	SQ Bolt	(1)
11b	-----	Handle SQ Drive	(1)
11c	-----	Large Bushing	(2)
11d	-----	Wear Plate	(1)
11e	-----	Washer	(2)
11f	-----	Disc Spring	(5)
11g	-----	Rack Pinion with Spacer	(1)
11h	-----	Pinion Drive Shaft	(1)
12a	-----	Lock Cam Holder	(1)
12b	-----	Lock Cam	(1)
12c	-----	Carrier Lock Spring	(2)
12d	-----	Cover Plate	(1)
12e	-----	M4x0.7mm Flat Hd. Torx T-20 Screw	(2)
13a	43-98-7125	Feed Handle Knob	(3)
13b	43-98-7130	Feed Handle Post	(3)
13c	-----	Hub	(1)
13d	-----	Square Drive Assembly	(1)
14	-----	Jacking Screw Cap	(1)
15	-----	Jacking Screw M14	(1)
16	28-44-0150	Mast Handle	(1)
17	44-72-0125	Pointer	(1)
18	-----	Mast Cap	(1)
19	43-24-2835	Mast Extrusion	(1)
20	-----	Rack Top Plate	(1)
21	06-82-0058	M5x0.8mm Pan Hd. T-25 M Screw	(2)
22	-----	Mast Rack	(1)
23	-----	Rack Bottom Plate	(1)

FIG.	PART NO.	DESCRIPTION OF PART	NO. REQ.
24	-----	Pin	(3)
25	-----	Stopper	(1)
26	43-98-7085	Depth Adjust	(1)
27	45-04-7030	Depth Indicator Set Screw Knob	(1)
28	-----	Mast Vial Holder	(1)
29	-----	Vial	(1)
30	-----	Battery Holder	(1)
31	05-80-0011	M6x1mm FH Hexagon Recess M Screw	(2)
32	45-88-0069	Flat Washer	(1)
33	06-14-0370	Machining Bolt	(1)
34	-----	Mast Sleeve	(1)
35	06-83-7040	Angle Brace	(1)
36	31-83-0240	Mast Clamp Blot Tube Spacer	(1)
37	-----	Bushing	(1)
38	-----	Angle Adjustment Slider	(1)
39	-----	Angle Brace Cap	(1)
40	-----	Bevel Adjust Plate	(1)
41	42-70-5268	E-Ring	(1)
42	43-24-2840	Angle Brace Extrusion	(1)
43	-----	Angle Adjust Plate	(1)
44	-----	Washer	(1)
45	06-82-0073	M6x1mm Pan Hd. Torx T-30 M Screw	(1)
46	34-60-0026	Snap Ring	(2)
47	-----	13MM Connection Pin	(1)
48	-----	Eye Bolt	(4)
49	05-80-0012	M6x1mm FH Hexagon Recess M Screw	(4)
50	-----	Flat Plate	(1)
51	42-04-3775	Base Adaptor	(1)
52	-----	Vial for Core Drill Stand	(1)
53	-----	Bevel Retaining Ring MT-36	(1)
54	-----	Sleeve Screw M10	(4)
55	-----	Round Leveling Pad	(4)
56	-----	Flat Washer 4.1x10x1	(4)
57	-----	M4x14mm Pan Hd. Torx T-20 M Screw	(4)
58	40-50-9227	Spring Plunger	(1)
59	-----	Stamping, Washer	(2)
60	-----	Wheel Mount and Shaft Assembly	(1)
61	43-98-7135	Knob Screw	(1)
62	45-94-8470	Stand Wheel	(2)
63	-----	Washer	(2)
64	-----	Flange Bolt M8x25	(2)
70	14-34-7080	Carrier Cap Kit	(2)
71	14-46-9880	Lock Cam Kit	(1)
72	14-73-3220	Lock Shaft Kit	(1)
73	14-34-7085	Lock Knob Kit	(2)
74	14-48-0365	Lock Kit	(1)
75	14-29-9050	Pinion Shaft Kit	(1)
76	14-46-9885	Feed Handle Kit	(1)
77	14-46-9890	Feed Handle Hub Assembly	(1)
78	45-04-7020	Jack Screw Assembly	(1)
79	14-73-3250	Mast Cap Kit	(1)
80	44-80-0225	Mast Rack Kit	(1)
81	43-46-0185	Depth Gauge Kit	(1)
82	44-08-0220	Vial Assembly	(1)
83	42-70-5720	Battery Clip Kit	(1)
84	45-16-3255	Mast Tightness Kit	(1)
85	45-16-3220	Mast Pivot Kit	(1)
86	44-08-0225	Base Vial Kit	(1)
87	44-66-7290	Anchor Slot Plate Kit	(1)
88	45-16-3230	Angle Brace Cap Kit	(1)
89	45-16-3225	Angle Brace Pivot Kit	(1)
90	14-46-9910	Wheel Assembly Kit	(1)
91	14-46-9950	Wheel Assembly Fasteners Kit	(1)
92	14-46-9920	Adjustable Wheel Kit	(4)
93	14-46-9925	None Adjustable Wheel Kit	(4)
94	14-34-7065	Leveling Bolt Kit	(4)
95	14-34-7060	Leveling Bolt Feet Kit	(4)
96	14-34-7090	Angle Adjustment Kit	(1)
97	3314*	Vacuum Pad Accessory	(1)
98	3315**	Handheld Drill Mounting Plate	(1)
100	12-20-9846	Service Nameplate (Not Shown)	(1)

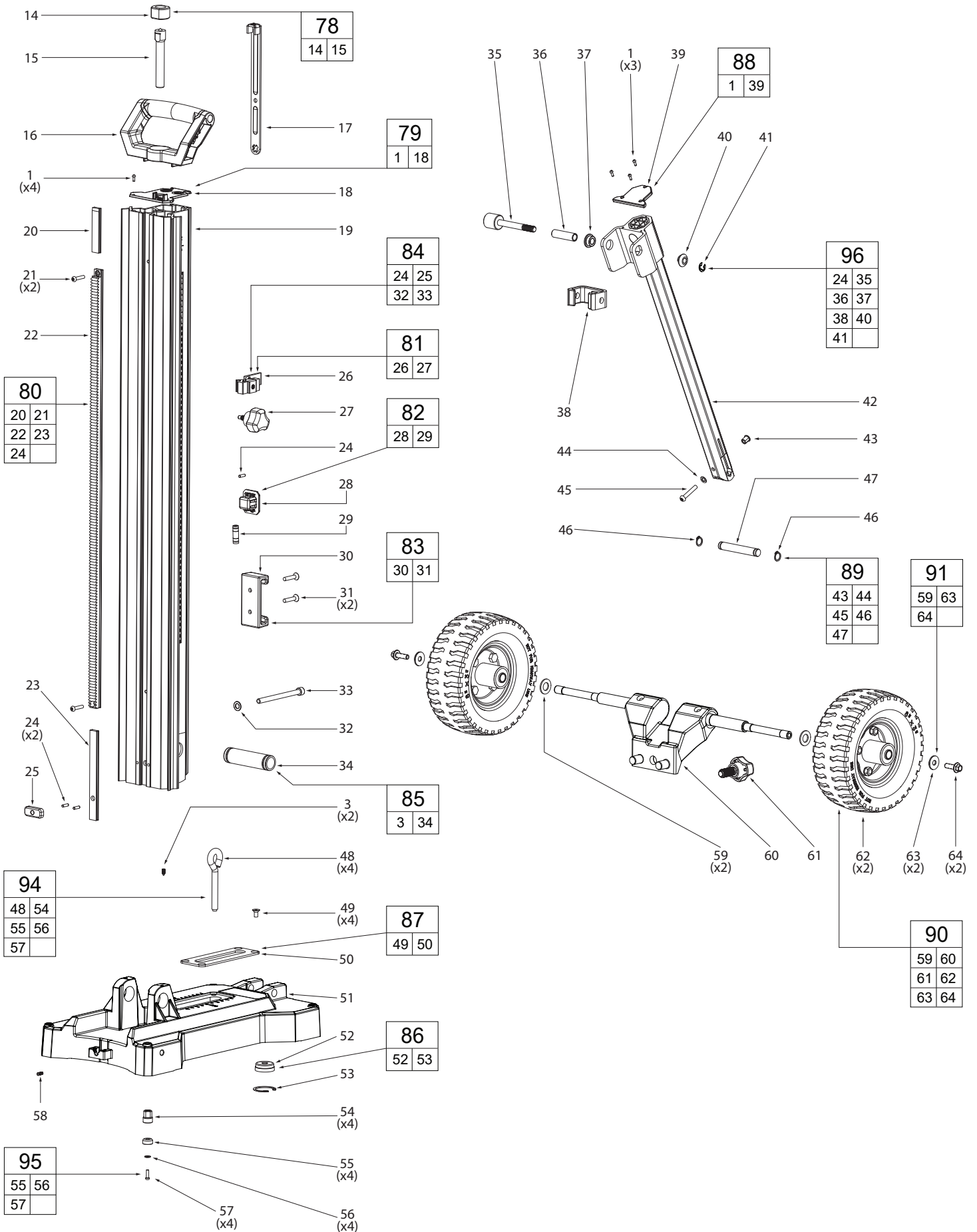
* For more information on product #3314, refer to SPL #54-46-0020
 ** For more information on product #3315, refer to page 4

TOOL ASSEMBLY - EXPLODED VIEW



* For more information on product #3314, the Vacuum Pad Accessory, refer to SPL #54-46-0020

TOOL ASSEMBLY - EXPLODED VIEW (Continued)



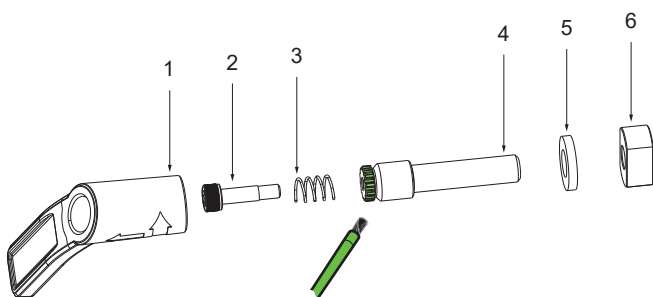
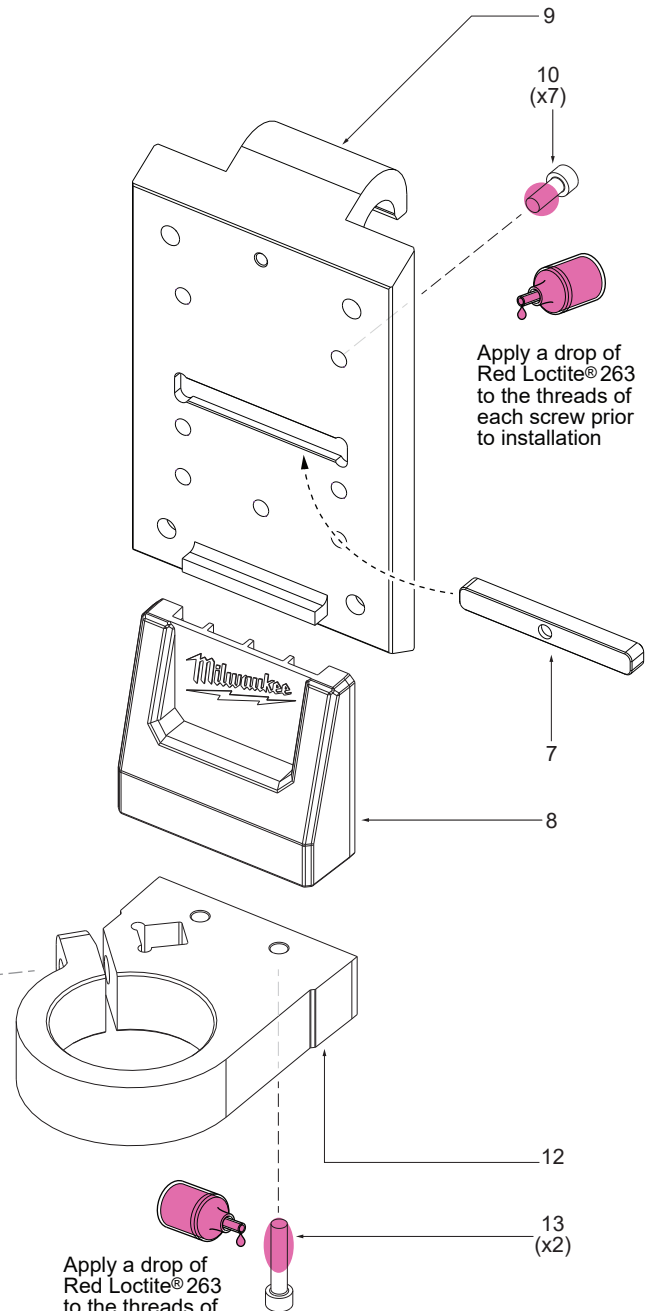
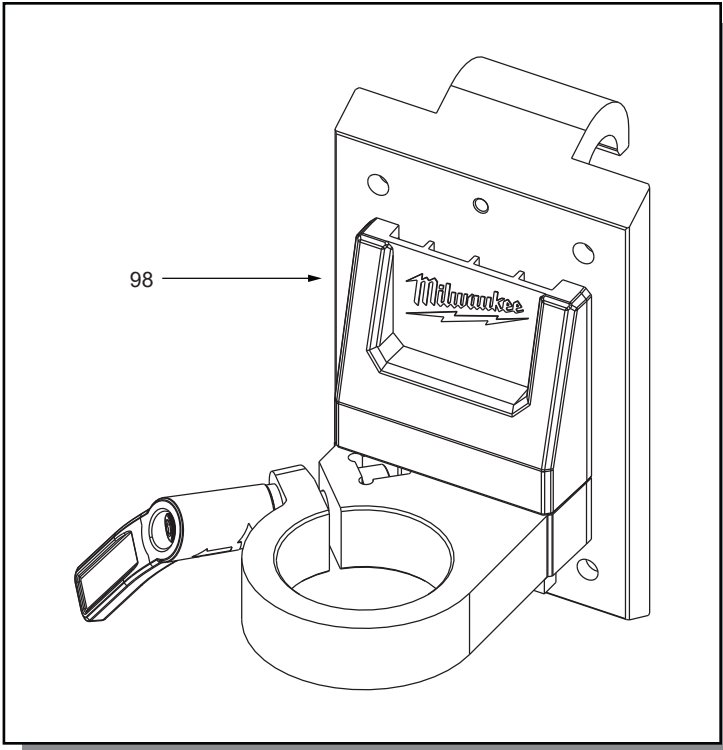


FIG.	PART NO.	DESCRIPTION OF PART	NO. REQ.
1	44-10-0017	Tool Free Handle	(1)
2	05-89-0013	Tool Free Handle Bolt	(1)
3	40-50-0083	Tool Free Spring	(1)
4	05-89-0014	Tool Mount Screw Bolt	(1)
5	45-88-0068	Washer	(1)
6	06-55-0015	Tool Free Handle Holder	(1)
7	43-96-0011	Flange Key	(1)
8	-----	Logo Flange	(1)
9	-----	Carrier Mount	(1)
10	45-04-1090	M6 x 16mm M Screw	(7)
12	-----	Tool Mount Plate	(1)
13	05-88-0051	M6 x 30mm Socket Head Cap Screw	(2)
98	3315	Handheld Drill Mounting Plate Accessory	(1)

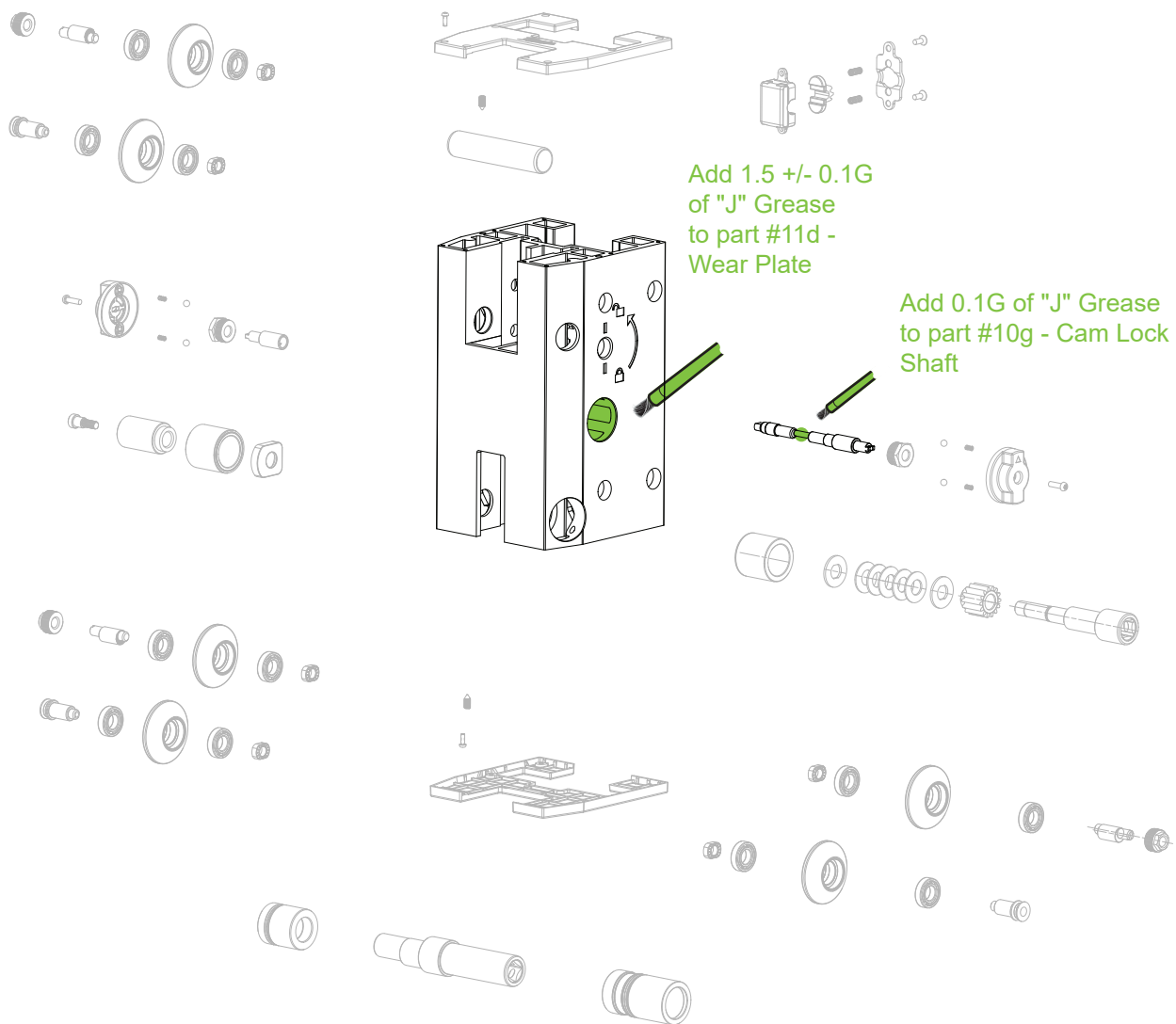
Apply a drop of Red Loctite® 263 to the threads of each screw prior to installation

LUBRICATION

- = 263 Red Loctite®
- = Type 'J' Grease, No. 49-08-4220

NOTE: When servicing, remove 90-95% of the existing grease prior to installing Type 'J'. Original grease may be similar in color but not compatible with 'J'. Clean gear assemblies with a clean dry cloth.

LUBRICATION INSTRUCTIONS



Add 1.5 +/- 0.1G of "J" Grease to part #11d - Wear Plate

Add 0.1G of "J" Grease to part #10g - Cam Lock Shaft

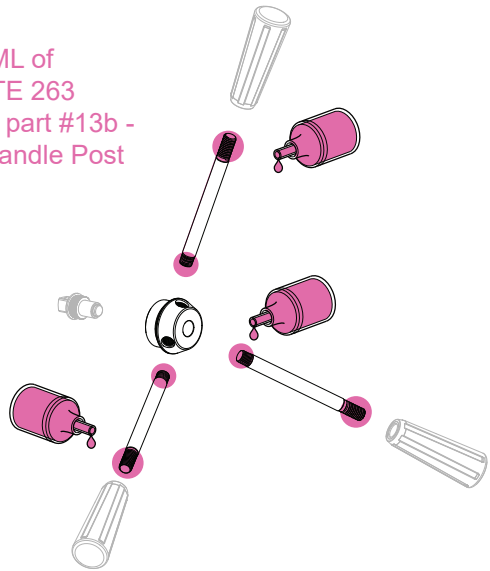


NOTE
Regarding parts to be lubricated:
Apply a light coating of grease to all highlighted parts shown prior to installation.
Reference the key below for grease types.



NOTE
Regarding parts to receive thread locking sealant:
Place one to two drops of the recommended Loctite® thread locking sealant (or the equivalent) to the threads of parts shown prior to installation.

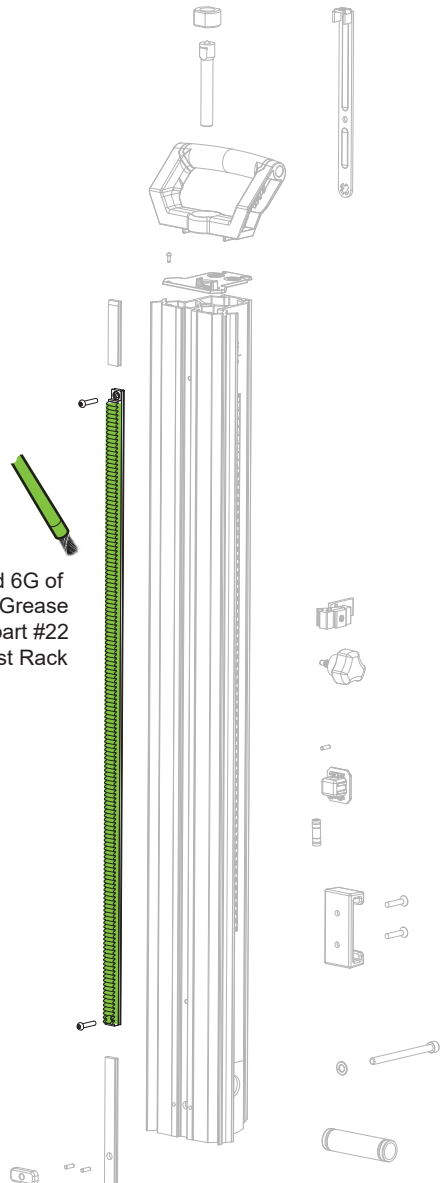
Add .1ML of LOCTITE 263 to each part #13b - Feed Handle Post



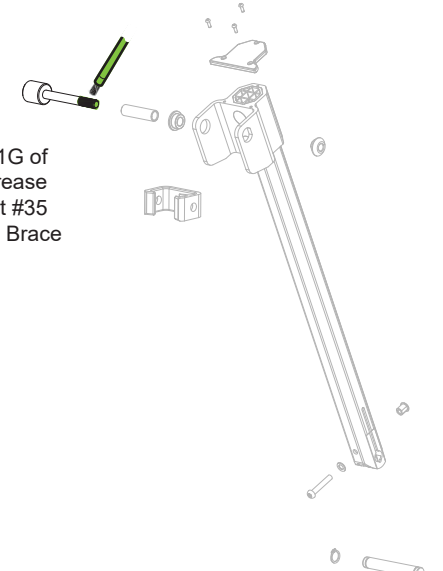
LUBRICATION NOTES:
Type 'J' Grease
No. 49-08-4220, 1 lb. can

NOTE: When servicing, remove 90-95% of existing grease prior to installing Type 'J'. Original grease may be similar in color but may not compatible with 'J'. Prior to reinstalling, clean gear assemblies with a clean, dry cloth. Lightly coat all parts highlighted here with 'J' grease. Apply a greater amount of grease to all internal and external gear teeth.

LUBRICATION INSTRUCTIONS (Continued)



Add 6G of
"J" Grease
to part #22
Mast Rack



Add .1G of
"J" Grease
to part #35
Angle Brace



● LUBRICATION NOTES:

Type 'J' Grease
No. 49-08-4220, 1 lb. can

NOTE: When servicing, remove 90-95% of existing grease prior to installing Type 'J'. Original grease may be similar in color but may not be compatible with 'J'. Prior to reinstalling, clean gear assemblies with a clean, dry cloth. Lightly coat all parts highlighted here with 'J' grease. Apply a greater amount of grease to all internal and external gear teeth.

SCREW TORQUE SPECIFICATIONS

FIG.	PART NO.	DESCRIPTION OF FASTENER	WHERE USED	SEAT TORQUE	
				(kgf-cm)	(lb-in)
1	-----	M3 x 8.5mm Pan Hd. Torx T-10 Screw	Carrier Cap	4±0.4	3±.3
3	-----	M5 Set Screw	Wheel and Mast Pivot	20±2	17±1.7
9a	-----	Thread Nut	Adjustable Wheel	143±21	124±18
9b	-----	Eccentric Shaft	Adjustable Wheel	15±1.5	13±1.3
10a	-----	M4 x 12mm Pan Hd. Torx T-20 Screw	Lock Knob and Shaft	15±1.5	13±1.3
10e	-----	Nut with Shoulder	Lock Shaft	100±15	86±13
11a	-----	Square Bolt	Pinion Shaft	120±18	104±15
12e	-----	M4 x .7 Pan Hd. Torx T-20 Screw	Lock Cam	20±2	17±1.7
15	-----	Jacking Screw M14 x 1	Jack Screw Assembly	50±7.5	43±6.5
21	-----	M5 x .8 Pan Hd. Torx T-25 Screw	Mast Rack	50±7.5	43±6.5
31	-----	M6 x 1 Flat Hd. Hexagon Recess Screw	Battery Clip	50±7.5	43±6.5
33	-----	Machining Bolt	Mast	100±15	86±13
45	-----	M6 x 1 Pan Hd. Torx T-30 Screw	Angle Brace Pivot	80±12	69±10
49	-----	M6 x 1 Flat Hd. Hexagon Recess Screw	Anchor Slot	25±4	21±3.4
57	-----	M4 x 14mm Pan Hd. Torx T-20 Screw	Leveling Bolt	20±2	17±1.7
64	-----	M8 x 25 Flange Bolt	Wheel Assembly	100±15	86±13