

OASIS® VERSACOOLER® II MODELS
PGVD8ACSL, PGVDACSL – INDOOR AND OUTDOOR RATED

INSTRUCTIONS

A. INSPECTION

Inspect the water cooler, water fountain and cartons for evidence of rough handling and concealed damage. Damage claims should be filed with the carrier.

B. TO PUT WATER COOLER AND FOUNTAIN INTO SERVICE

1. **NOTE:** The following states require a licensed plumber to install cooler; AG, GA, MA, MI, OK, RI, SC, SD, TX, VT and WI. CA, KS, MN, NM and OR allow for a state-registered installer or contractor as well. State and local plumbing codes may prohibit use of saddle tapping valves for water line connection in some applications. All connections must conform to applicable plumbing codes.
2. The PGVD8ACSL 14G is composed of a water cooler and a water fountain. The water cooler contains the refrigeration system and is always mounted on the right side. This unit can be configured with the water cooler high or low. Refer to proper roughing in drawing for location of plumbing and electrical service. Filter units have additional instructions on a label inside fountain side access panel. Read these before installing unit. This drinking water cooler is designed to be operated at a water supply line pressure of up to 100 psi (690 kPa). A pressure regulator must be installed in front of the unit's water inlet if the water pressure (including any possible pressure spikes) could exceed 100 psi (690 kPa).
3. **FLUSH BUILDING WATER SUPPLY BEFORE INSTALLING UNIT.**
4. Install wall hangers as shown on the desired roughing in drawing. Wall hangers are shipped fastened to the backs of each unit.
5. **To configure this cooler for right side high or right side low installation, refer to details below. Bottom screws of the appropriate side panel may be temporarily removed to install patch plate. Assemble drains as shown below, matching the position of the gaskets to the contour of the cooler tops.**
6. Mount the water cooler on the right hanger.
7. Mount water fountain on left side hanger while routing "Water In" tube through access hole to stop valve as required. Remove cap from "Drain/Remote Cold Water" connection and insert "Water In" tube.
8. **All provided waste drain parts for field installation are packed in the water fountain. Assemble drain per appropriate roughing in drawing. The short leg of the crossover piece will be on the water cooler side. When unit has an internal waste trap, it should be wrapped with insulating tape to prevent sweating. Use of 1-3/4" knockout for a waste line is not recommended because of potential conflict with ADA* toe space requirements. Check with your local building code inspector for approval.**
9. Install a shut off valve in water supply line. Connect "Water Supply" tube to shut off valve. An in-line strainer is furnished in "Water Supply" tube. This connection should not be a solder joint. The unit is furnished with an in-line strainer in one of two possible locations: the 3/8" "Water Supply" copper tube or in the 1/4" OD tube "Water Supply" line at the end opposite the 3/8" to 1/4" OD quick-connect fitting. To ease removal of the strainer for service, a sheet metal screw may be lightly threaded into the strainer. **THIS STRAINER SHOULD ONLY BE REMOVED FOR SERVICING, AND IS REQUIRED TO BE INSTALLED FOR PROPER UNIT OPERATION.**
10. Rotate fan blade by hand to see that it is free of obstructions.
11. Check available power supply against water cooler data plate to assure correct electrical service. This drinking water cooler is intended to be connected to a 20A minimum ground fault circuit interrupting (GFCI) device to meet UL requirements. Plug power supply cord into wall outlet. The rear most 1-3/8 diameter knockout in frame bottom is for an externally located electrical supply. Make sure knockout hole edge is smooth and free of any burrs. Use of Heyco bushing #2184 in knocked out hole is recommended to prevent damage to service cord and to close up excess opening around cord. Route cord so it does not interfere with ADA* space requirements.
12. To fill cold water tank on water cooler, open water supply line shut-off and push front push button to allow water to flow to bubbler. Run water until stream is free of bubbles.
13. To Adjust Bubbler stream, remove the Bezel and Button from front of cooler. Turn adjustment clockwise to increase stream height.

C. MAINTENANCE

The only maintenance operation required is the removal of dirt and lint from the condenser of the water cooler. Inspection should be made at 3-month intervals. Disconnect the power supply cord, then clean the condenser with a small stiff non-wire brush when required. Observance of this procedure will ensure adequate air circulation through the condenser, so operation is efficient and economical.

D. OVERLOAD PROTECTION (water cooler)

The compressor motor, where used, is equipped with an automatic reset protector which will disconnect the motor from the line in case of an overload.

E. LUBRICATION (water cooler)

This unit is equipped with a hermetically sealed compressor and requires no additional lubrication. The fan motor on this unit seldom needs oiling, but if required, a few drops of SAE 10 oil should be used.

F. TO DISCONTINUE USE OF WATER COOLER AND WATER FOUNTAIN

1. Close water shut off valve.
2. Provide container to catch water to be drained.
3. Disconnect power supply cord then disconnect water supply line at shut off valve. Route water supply line to container and actuate push button. If this drains too slowly for you, prepare 3/8" ID tube or 3/8" OD tube with quick-connect fitting and remove screw plug in tank drain. Slide tube over drain and route to container. Replace screw plug when draining is complete. Do not over-tighten. O-ring only needs to be snug to seal.
4. **ALWAYS DRAIN ALL WATER WHEN FREEZING TEMPERATURES ARE ANTICIPATED AND BEFORE SHIPPING THE WATER COOLER.**

*American With Disabilities Act

WARNING

The warranty and the Underwriters' Laboratory listing for this machine are automatically voided if this machine is altered, modified, or combined with any other machine or device. Alteration or modification of this machine may cause serious flooding and/or hazardous electrical shock or fire. **EXCEPT AS SET FORTH HEREIN, THE MANUFACTURER MAKES NO OTHER WARRANTY, GUARANTEE OR AGREEMENT EXPRESSED, IMPLIED OR STATUTORY, INCLUDING ANY IMPLIED WARRANTY OR MERCHANTABILITY OR FITNESS FOR A PARTICULAR PURPOSE.**



OASIS INTERNATIONAL

222 East Campus View Blvd. • Columbus, OH 43235 U.S.A.

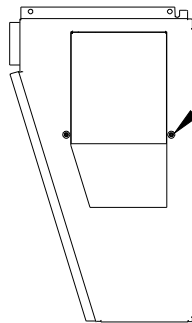
1-800-950-3226

www.oasiscoolers.com

OASIS is a registered trademark of LVD Acquisition, LLC dba Oasis International

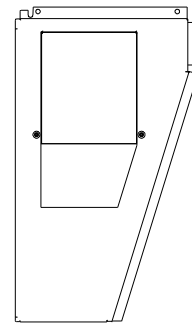
© 2024 LVD Acquisition, LLC
030099-722, Date 03/2024

WATER FOUNTAIN
RIGHT SIDE PANEL



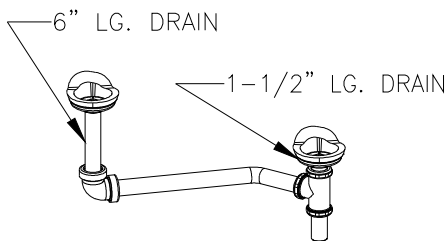
2 T15 TORX HEAD
SCREWS (PROVIDED)

WATER COOLER
LEFT SIDE PANEL



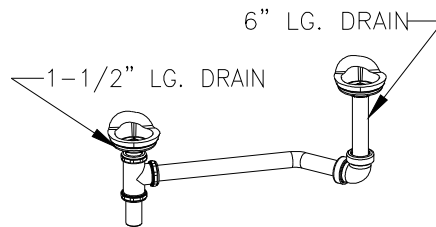
PATCH PLATE LOCATION
FOR COOLER CONFIGURED
FOR RIGHT SIDE LOW

PATCH PLATE LOCATION
FOR COOLER CONFIGURED
FOR RIGHT SIDE HIGH



DRAIN CONFIGURATION
RIGHT SIDE LOW

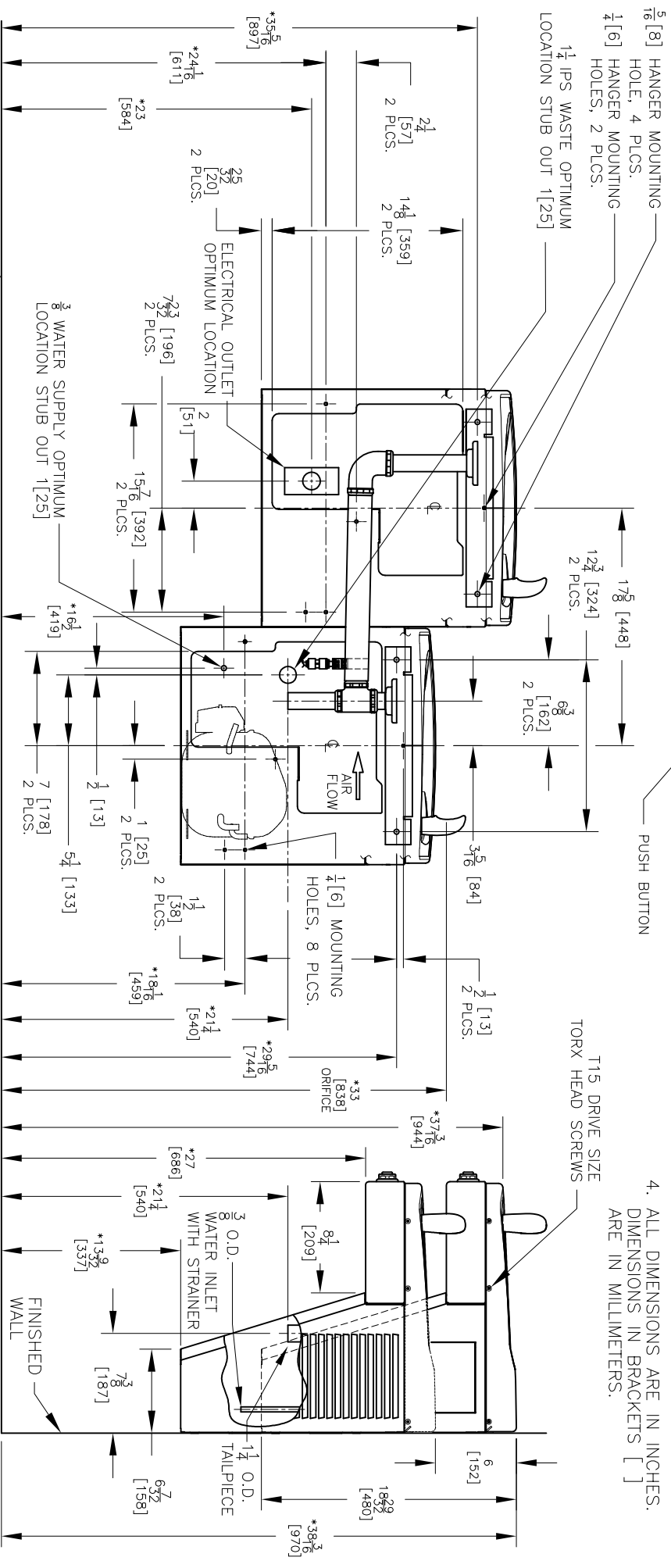
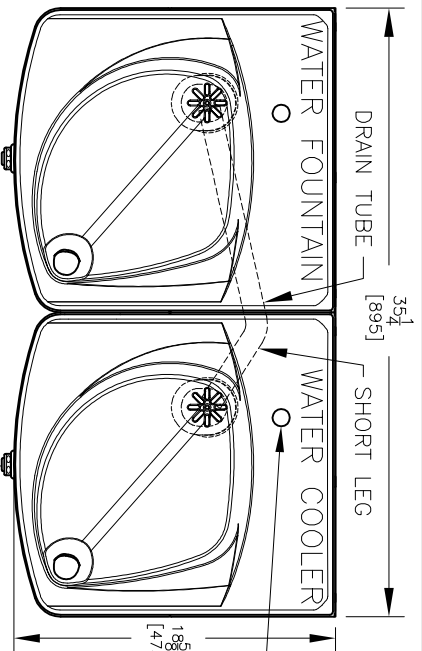
MOUNT DRAINS WITH PROVIDED
1-1/4" LONG SCREWS



DRAIN CONFIGURATION
RIGHT SIDE HIGH

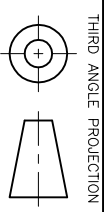
MOUNT DRAINS WITH PROVIDED
1-1/4" LONG SCREWS

OASIS® VERSACOOLER® II MODELS
 PGVD8ACSL, PGVDACSL INDOOR AND OUTDOOR RATED



RIGHT SIDE LOW
 CONFIGURATION

- NOTES:
- TRAP, STOP VALVE AND ELECTRICAL OUTLET NOT FURNISHED.
 - ALLOW 4 INCHES [102 MM] MIN. PER SIDE FOR VENTILATION.
 - RECOMMENDED ADULT BARRIER FREE HEIGHT INSTALLATION SHOWN. REDUCE HEIGHT BY 3 INCHES FOR INSTALLATIONS USED PRIMARILY BY CHILDREN AGES 12 AND YOUNGER. UNIT SHALL ALSO HAVE A MINIMUM CLEAR FLOOR SPACE 30"[760] BY 48"[1220]. ADJUST VERTICAL DIMENSIONS AS REQ'D TO COMPLY WITH FEDERAL, STATE, AND LOCAL CODES.
 - ALL DIMENSIONS ARE IN INCHES. DIMENSIONS IN BRACKETS [] ARE IN MILLIMETERS.



THIRD ANGLE PROJECTION
 ROUGHING-IN
 AND
 DIMENSIONAL
 DRAWING