



# AQUAPOINTE™ ELECTRONIC BOTTLE FILLER, MODULAR, REFRIGERATED MODEL MW12EBF

## Suggested Specification

Model MW12EBF shall deliver 12.0 gph of 50°F water at 90°F ambient and 80°F inlet water per ASHRAE 18 testing. Shall be recessed in design. Water flow to the bottler filler is by means of an electronically activated solenoid. Shall include the Aqua Pointe™ Bottle Filler with contactless activation and laminar flow. Bottle Filler alcove and cabinet finish shall be stainless steel. Key Aqua Pointe™ bottle filler components contain Freshield®, which utilizes a silver-based antimicrobial compound to protect the surfaces from discoloration, odors and degradation caused by the growth of micro-organisms and mildew. Shall use R-134a refrigerant. Shall comply with ANSI 117.1 and ADA. Shall be listed by Underwriters Laboratories to US and Canadian standards. Shall comply with NSF/ANSI 61 and NSF/ANSI 372.

<b>Features:</b>	<ul style="list-style-type: none"> <li>• Built-in 100 micron strainer stops particles before they enter the waterway</li> <li>• Waterways are Lead-Free in materials &amp; construction</li> <li>• High efficiency cooling system</li> <li>• Heavy duty galvanized steel frame</li> <li>• Contactless activation bottle filler with programmable auto shut off</li> <li>• Built-in filter monitor and bottle counter</li> <li>• Logos permanently formed into the alcove and stainless steel wrapper</li> <li>• LED lighted alcove</li> <li>• Built in panel locks for easy access to chiller and filtration if applicable</li> </ul>
<b>Filtration:</b>	Option to add filtration
<b>Power:</b>	115 Volts, 60 Hz
<b>Activation By:</b>	Contactless Sensor on Bottle Filler
<b>Mounting Type:</b>	In Wall
<b>Chilling Option:</b>	12.0 gph*
<b>Full Load Amps</b>	5.5 amps
<b>Rated Watts</b>	550
<b>Approx. Net Weight</b>	88 lbs
<b>Installation Location:</b>	Indoor



Ships in multiple boxes.

### Installation

- Prior to rough-in consult with local, state and federal codes for proper mounting height
- Shipped with complete instructions
- Recessed mounting frame included, but water supply and drain required

### Finishes

- Standard cabinet finish: Stainless steel

### Limited 5-Year Warranty

(Continental limits of the United States and Canada) Five years on the sealed refrigeration system. Bottle fillers, fountains, and electrical components are warranted for 12 months. Detailed warranty certificate enclosed with each water cooler; sample available upon request.

### Export Warranty

One year on components parts. Detailed warranty certificate enclosed with each drinking fountain; sample copy available upon request.

### Certifications/Compliance

- Certified to UL 399 and CAN/CSA C22.2 No.120 (electric water coolers only)
- Product Certified to NSF/ANSI Standard 61-G & 372 and conforms with the lead content requirements for "Lead Free" plumbing as defined by California, Vermont, Maryland, and Louisiana state laws and the U.S. Safe Drinking Water Act
- These water coolers comply with the requirements of ADA (Americans with Disabilities Act) when properly installed

\*Industry standard rating condition at 90°F ambient, 80°F inlet water and 50°F drinking water temperature

MODEL: \_\_\_\_\_ QTY: \_\_\_\_\_

PROJECT: \_\_\_\_\_

CONTACT: \_\_\_\_\_

NOTES: \_\_\_\_\_

APPROVAL: \_\_\_\_\_ DATE: \_\_\_\_\_



**WARNING:**  
Cancer and Reproductive Harm  
[www.P65Warnings.ca.gov](http://www.P65Warnings.ca.gov)



Specifications subject to change without notice



# AQUAPOINTE™ ELECTRONIC BOTTLE FILLER, MODULAR, REFRIGERATED **MODEL MW12EBF**

## Accessories



### **OASIS VersaFilter III Universal Retrofit Kit**

OASIS Item #041253-001

- Add filtration to your unit - retrofit into all OASIS fountains and bottle fillers. Certified to NSF/ANSI 42, 53 and 401 for lead, Particulate Class 1, chlorine, taste, odor and microplastics reduction to 4,750 gallons.



### **OASIS Total PFAS Universal Retrofit Kit**

OASIS Item #041253-005

- Add filtration to your unit - retrofit into all OASIS fountains and bottle fillers. Certified to NSF/ANSI 42, 53 and 401 for chlorine, taste, odor, particulate class 1, lead, cysts, Total PFAS, and microplastics reduction to 1,100 gallons.



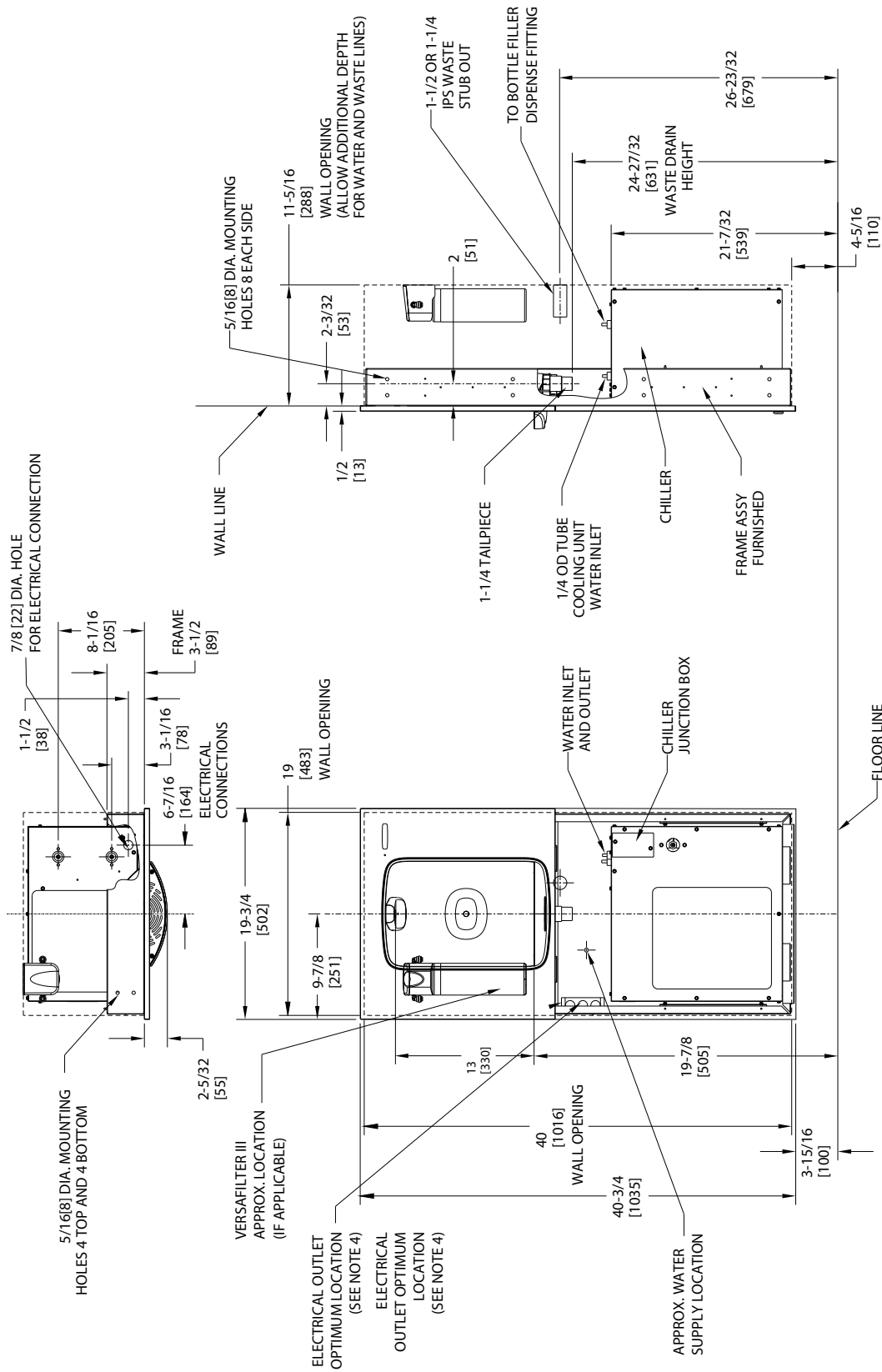
### **OASIS Pharmaceutical Universal Retrofit Kit**

OASIS Item #041253-006

- Add filtration to your unit - retrofit into all OASIS fountains and bottle fillers. Certified to NSF/ANSI 42, 53 and 401 for chlorine, taste, odor, particulate class 1, lead, cysts, Atenolol, Bisphenol A, Carbamazepine, DEET (diethyltoluamide), Estrone, Ibuprofen, Meprobamate, Metolachlor, Naproxen, Nonyl phenol, Phenytoin and Trimethoprim, and microplastics reduction to 725 gallons.



[View all filters and accessories](#)



**NOTES:**

1. RECOMMENDED ADULT HEIGHT INSTALLATION SHOWN. ADJUST VERTICAL DIMENSIONS AS REQUIRED TO COMPLY WITH FEDERAL, STATE AND LOCAL CODES.
2. STOP VALVE, TRAP, PIPE CONNECTOR TO WASTE LINE NOT PROVIDED. SHORT RADIUS TRAP REQUIRED.
3. ALL DIMENSIONS ARE IN INCHES. DIMENSIONS IN [ ] ARE IN MILLIMETERS.
4. 115V GROUNDED NORTH AMERICAN DUPLEX RECEPTACLE REQUIRED. THIS DRINKING WATER COOLER IS INTENDED TO BE CONNECTED TO A 20A MINIMUM GROUND FAULT CIRCUIT INTERRUPTING (GFCI) DEVICE TO MEET UL REQUIREMENTS.