



URFACE MOUNT AQUAPOINTE™, ELECTRONIC BOTTLE FILLER, REFRIGERATED MODEL MWSM12EBF

Suggested Specification

Model MWSM12EBF shall deliver 12.0 gph of 50°F water at 90°F ambient and 80°F inlet water per ASHRAE 18 testing. Shall be surface mount in design. Water flow to the bottle filler is by means of an electronically activated solenoid. Shall include the Aqua Pointe™ Bottle Filler with contactless activation and laminar flow. Bottle Filler alcove and cabinet finish shall be stainless steel. Key Aqua Pointe™ bottle filler components contain Freshield®, which utilizes a silver-based antimicrobial compound to protect the surfaces from discoloration, odors and degradation caused by the growth of micro-organisms and mildew. Shall use R-134a refrigerant. Shall comply with ANSI 117.1 and ADA. Shall be listed by Underwriters Laboratories to US and Canadian standards. Shall comply with NSF/ANSI 61 and NSF/ANSI 372.

- Features:**
- Built-in 100 micron strainer stops particles before they enter the waterway
 - Waterways are Lead-Free in materials & construction
 - High efficiency cooling system
 - Heavy duty galvanized steel frame
 - Contactless activation bottle filler with programmable auto shut off
 - Built-in filter monitor and bottle counter
 - Logos permanently formed into the alcove and stainless steel wrapper
 - LED lighted alcove
 - Built in panel locks for easy access to chiller and filtration

Filtration:	Option to add filtration
Power:	115 Volts, 60 Hz
Activation By:	Contactless Sensor
Mounting Type:	Wall Mount
Chilling Option:	12.0 gph*
Full Load Amps	5.5 amps
Rated Watts	550
Approx. Net Weight	101 lbs
Installation Location:	Indoor



Ships in multiple boxes.

Installation

- Prior to rough-in consult with local, state and federal codes for proper mounting height
- Shipped with complete instructions
- Surface mount frame included, but water supply and drain required

Finishes

- Standard: Stainless Steel Finish

Limited 5-Year Warranty

(Continental limits of the United States and Canada) Five years on the sealed refrigeration system and most component parts. Detailed warranty certificate enclosed with each water cooler; sample available upon request.

Export Warranty

One year on components parts. Detailed warranty certificate enclosed with each drinking fountain; sample copy available upon request.

Certifications/Compliance

- Certified to UL 399 and CAN/CSA C22.2 No.120 (electric water coolers only)
- Product Certified to NSF/ANSI Standard 61-G & 372 and conforms with the lead content requirements for "Lead Free" plumbing as defined by California, Vermont, Maryland, and Louisiana state laws and the U.S. Safe Drinking Water Act
- These water coolers comply with the requirements of ADA (Americans with Disabilities Act) when properly installed

*Industry standard rating condition at 90°F ambient, 80°F inlet water and 50°F drinking water temperature

MODEL: _____ QTY: _____
 PROJECT: _____
 CONTACT: _____
 NOTES: _____
 APPROVAL: _____ DATE: _____



WARNING:
Cancer and Reproductive Harm
www.P65Warnings.ca.gov



Specifications subject to change without notice



URFACE MOUNT AQUAPOINTE™, ELECTRONIC BOTTLE FILLER, REFRIGERATED **MODEL MWSM12EBF**

Accessories



OASIS VersaFilter III Universal Retrofit Kit

OASIS Item #041253-001

- Add filtration to your unit - retrofit into all OASIS fountains and bottle fillers. Certified to NSF/ANSI 42, 53 and 401 for lead, Particulate Class I, chlorine, taste, odor and microplastics reduction to 4,750 gallons.



OASIS Total PFAS Universal Retrofit Kit

OASIS Item #041253-005

- Add filtration to your unit - retrofit into all OASIS fountains and bottle fillers. Certified to NSF/ANSI 42, 53 and 401 for chlorine, taste, odor, particulate class 1, lead, cysts, Total PFAS, and microplastics reduction to 1,100 gallons.



OASIS Pharmaceutical Universal Retrofit Kit

OASIS Item #041253-006

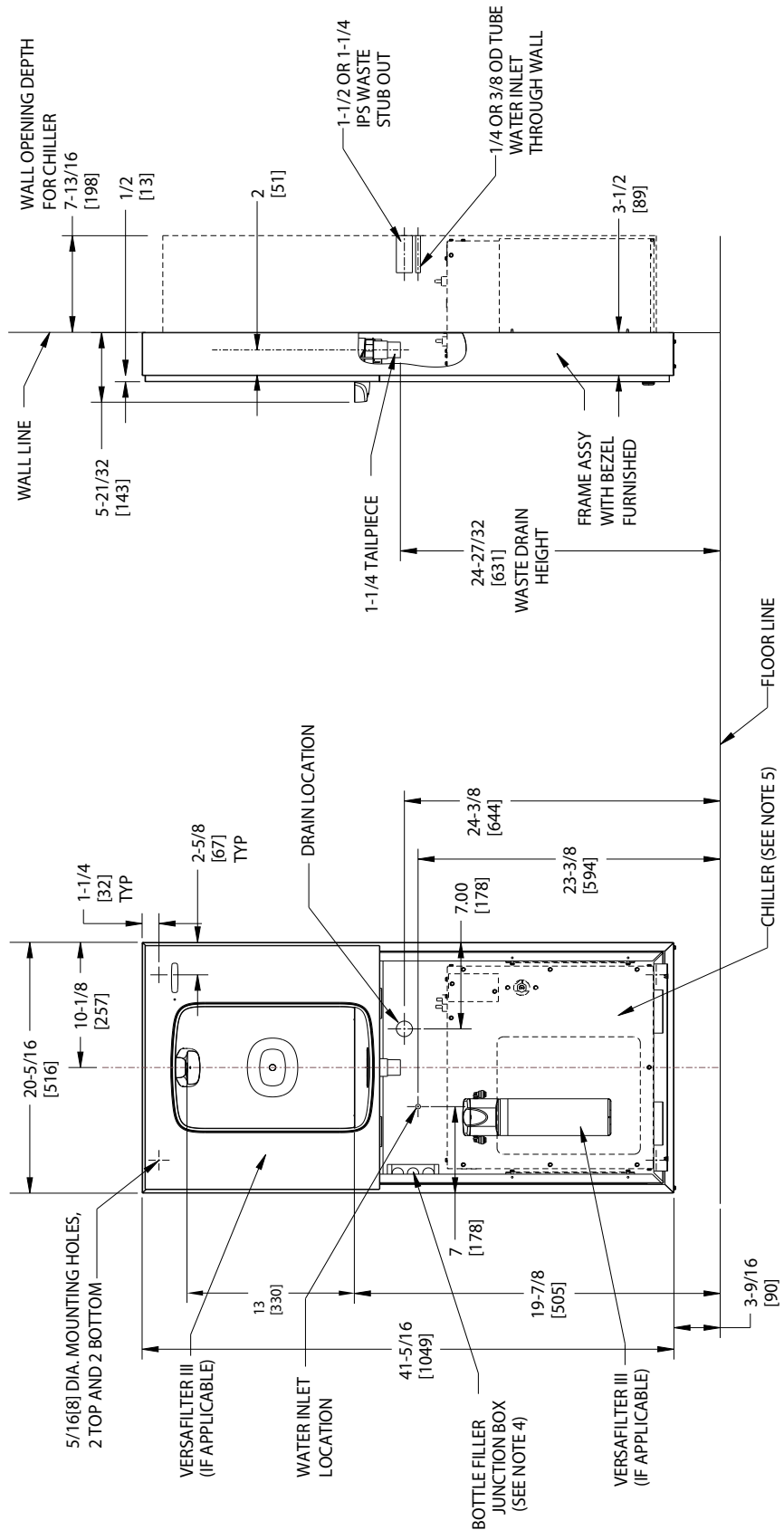
- Add filtration to your unit - retrofit into all OASIS fountains and bottle fillers. Certified to NSF/ANSI 42, 53 and 401 for chlorine, taste, odor, particulate class 1, lead, cysts, Atenolol, Bisphenol A, Carbamazepine, DEET (diethyltoluamide), Estrone, Ibuprofen, Meprobamate, Metolachlor, Naproxen, Nonyl phenol, Phenytoin and Trimethoprim, and microplastics reduction to 725 gallons.



[View all filters and accessories](#)



SURFACE MOUNT AQUAPOINTE™, ELECTRONIC BOTTLE FILLER, REFRIGERATED
MODEL MWSM12EBF



- NOTES:**
1. RECOMMENDED ADULT HEIGHT INSTALLATION SHOWN. ADJUST VERTICAL DIMENSIONS AS REQUIRED TO COMPLY WITH FEDERAL, STATE AND LOCAL CODES.
 2. STOP VALVE, TRAP, PIPE CONNECTOR TO WASTE LINE NOT PROVIDED. SHORT RADIUS TRAP REQUIRED.
 3. ALL DIMENSIONS ARE IN INCHES. DIMENSIONS IN [] ARE IN MILLIMETERS.
 4. 115V GROUNDED NORTH AMERICAN DUPLEX RECEPTACLE REQUIRED. THIS DRINKING WATER COOLER IS INTENDED TO BE CONNECTED TO A 20A MINIMUM GROUND FAULT CIRCUIT INTERRUPTING (GFCI) DEVICE TO MEET UL REQUIREMENTS.
 5. CHILLER, IF APPLICABLE, MUST BE ADEQUATELY SUPPORTED BY SOMETHING OTHER THAN THE FRAME.
 6. FILTER INSTALLATION LOCATIONS WILL VARY BY MODEL.