



SURFACE MOUNT QUASAR, ELECTRONIC BOTTLE FILLER, REFRIGERATED, DUAL FILTRATION MODEL MWSM12F2EBQ

Suggested Specification

odel MWSM12F2EBQ shall deliver 12.0 gph of 50°F water at 90°F ambient and 80°F inlet water per ASHRAE 18 testing. Shall be surface mount in design. Water flow to the bottler filler is by means of an electronically activated solenoid.

QUASAR bottle filler shall have UV-C LED treatment at the dispense point, which disinfects the water while it is being dispensed. UV-C LED also cycles on periodically to keep the dispense point sanitized between dispenses.

Shall include the Aqua Pointe™ Bottle Filler with contactless activation and laminar flow. Bottle Filler alcove and cabinet finish shall be stainless steel. Key Aqua Pointe™ bottle filler components contain Freshield®, which utilizes a silver-based antimicrobial compound to protect the surfaces from discoloration, odors and degradation caused by the growth of micro-organisms and mildew. Shall use R-134a refrigerant. Shall comply with ANSI 117.1 and ADA. Shall be listed by Underwriters Laboratories to US and Canadian standards. Shall comply with NSF/ANSI 61 and NSF/ANSI 372.

Features:	• Contactless QUASAR with mercury-free UV-C LED treatment at the dispense point
	• Built-in 100 micron strainer stops particles before they enter the waterway
	• Waterways are Lead-Free in materials & construction
	• High efficiency cooling system
	• Heavy duty galvanized steel frame
	• Contactless activation bottle filler with programmable auto shut off
	• Built-in filter monitor and bottle counter
	• Logos permanently formed into the alcove and stainless steel wrapper
	• LED lighted alcove
	• Built in panel locks for easy access to chiller and filtration
Filtration:	VersaFilter III is Certified to NSF/ANSI 42 and 53 for lead, cyst, Particulate Class I, chlorine, taste and odor reduction to 4,750 gallons and Remedi Filter.
Power:	115 Volts, 60 Hz
Activation By:	Contactless Sensor
Mounting Type:	Wall Mount
Chilling Option:	12.0 gph*
Full Load Amps	5.5 amps
Rated Watts	550
Approx. Net Weight	104 lbs
Installation Location:	Indoor



Ships in multiple boxes.

Installation

- Prior to rough-in consult with local, state and federal codes for proper mounting height
- Shipped with complete instructions
- Surface mount frame included, but water supply and drain required

Finishes

- Standard: Stainless Steel Finish

Limited 5-Year Warranty

(Continental limits of the United States and Canada) Five years on the sealed refrigeration system. Bottle fillers, fountains, and electrical components are warranted for 12 months. Detailed warranty certificate enclosed with each water cooler; sample available upon request.

Export Warranty

One year on components parts. Detailed warranty certificate enclosed with each drinking fountain; sample copy available upon request.

Certifications/Compliance

- Certified to UL 399 and CAN/CSA C22.2 No.120 (electric water coolers only)
- Product Certified to NSF/ANSI Standard 61-G & 372 and conforms with the lead content requirements for "Lead Free" plumbing as defined by California, Vermont, Maryland, and Louisiana state laws and the U.S. Safe Drinking Water Act
- These water coolers comply with the requirements of ADA (Americans with Disabilities Act) when properly installed

MODEL: _____ QTY: _____
 PROJECT: _____
 CONTACT: _____
 NOTES: _____
 APPROVAL: _____ DATE: _____



WARNING:
Cancer and Reproductive Harm
www.P65Warnings.ca.gov



Specifications subject to change without notice



SURFACE MOUNT QUASAR, ELECTRONIC BOTTLE
FILLER, REFRIGERATED, DUAL FILTRATION
MODEL MWSM12F2EBQ

Accessories



OASIS VersaFilter III Replacement Cartridge

OASIS Item #041145-001

- VersaFilter III is Certified to NSF/ANSI 42 and 53 for lead, Particulate Class I, chlorine, taste and odor reduction to 4,750 gallons



OASIS Remedi Replacement Cartridge

OASIS Item #037406-101

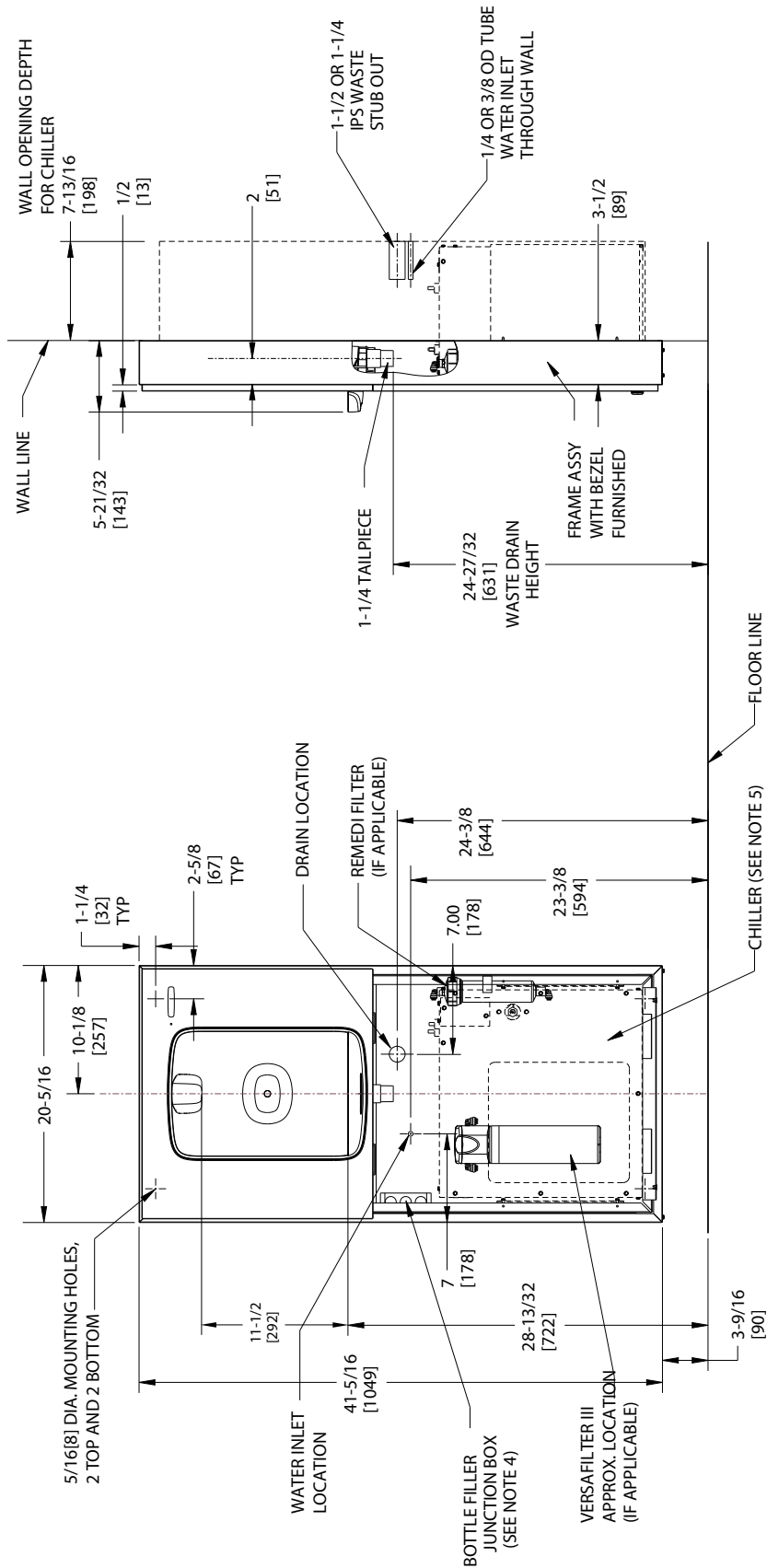
- Remedi filter reduces chlorine, taste and odor reduction, pharmaceutical & chemical waste, heavy metals (copper, iron, lead, tin), cysts, viruses, & bacteria.



[View all filters and accessories](#)



SURFACE MOUNT QUASAR, ELECTRONIC BOTTLE FILLER, REFRIGERATED, DUAL FILTRATION MODEL MWSM12F2EBO



NOTES:

1. RECOMMENDED ADULT HEIGHT INSTALLATION SHOWN. ADJUST VERTICAL DIMENSIONS AS REQUIRED TO COMPLY WITH FEDERAL, STATE AND LOCAL CODES.
2. STOP VALVE, TRAP, PIPE CONNECTOR TO WASTE LINE NOT PROVIDED. SHORT RADIUS TRAP REQUIRED.
3. ALL DIMENSIONS ARE IN INCHES. DIMENSIONS IN [] ARE IN MILLIMETERS.
4. 115V GROUNDING NORTH AMERICAN DUPLEX RECEPTACLE REQUIRED. THIS DRINKING WATER COOLER IS INTENDED TO BE CONNECTED TO A 20A MINIMUM GROUND FAULT CIRCUIT INTERRUPTING (GFCI) DEVICE TO MEET UL REQUIREMENTS.
5. CHILLER, IF APPLICABLE, MUST BE ADEQUATELY SUPPORTED BY SOMETHING OTHER THAN THE FRAME.
6. FILTER INSTALLATION LOCATIONS WILL VARY BY MODEL.