



# RADII DRINKING FOUNTAIN, NON-REFRIGERATED & MODULAR AQUAPOINTE™ MECHANICAL BOTTLE FILLER

## MODEL MGSBF

### Suggested Specification

Model MGSBF is a non-refrigerated unit. Shall be recessed in design. Water flow to the bottler filler is by means of a manually activated push button. Shall include the Aqua Pointe™ Bottle Filler with mechanical activation and laminar flow. Bottle Filler alcove and cabinet finish shall be stainless steel. Key Aqua Pointe™ bottle filler components contain Freshield®, which utilizes a silver-based antimicrobial compound to protect the surfaces from discoloration, odors and degradation caused by the growth of micro-organisms and mildew. Basin shall be designed to eliminate splashing and standing water. Shall comply with ANSI 117.1 and ADA. Shall be listed by Underwriters Laboratories to US and Canadian standards. Shall comply with NSF/ANSI 61 and NSF/ANSI 372.

<b>Features:</b>	<ul style="list-style-type: none"> <li>• Built-in 100 micron strainer stops particles before they enter the waterway</li> <li>• Waterways are Lead-Free in materials &amp; construction</li> <li>• Heavy duty galvanized steel frame</li> <li>• Manually activated water flow</li> <li>• Logos permanently formed into the alcove and stainless steel wrapper</li> <li>• Built in panel locks for easy access to chiller and filtration if applicable</li> </ul>
<b>Filtration:</b>	Option to add filtration
<b>Power:</b>	No electricity required
<b>Activation By:</b>	Independent manual activation on bottle filler and fountain
<b>Mounting Type:</b>	In Wall
<b>Chilling Option:</b>	Non-Refrigerated
<b>Full Load Amps</b>	0 amps
<b>Rated Watts</b>	0
<b>Approx. Net Weight</b>	77 lbs
<b>Installation Location:</b>	Indoor



Ships in multiple boxes.

### Installation

- Prior to rough-in consult with local, state and federal codes for proper mounting height
- Shipped with complete instructions
- Frame allows for universal installation
- Recessed mounting frame included, but water supply and drain required

### Finishes

- Standard cabinet finish: Stainless steel

### Limited 1-Year Warranty

(Continental limits of the United States and Canada)  
One year on bottle fillers and electrical components. Detailed warranty certificate enclosed with each water cooler; sample available upon request.

### Export Warranty

One year on components parts. Detailed warranty certificate enclosed with each drinking fountain; sample copy available upon request.

### Certifications/Compliance

- Certified to UL 399 and CAN/CSA C22.2 No.120 (electric water coolers only)
- Product Certified to NSF/ANSI Standard 61-G & 372 and conforms with the lead content requirements for "Lead Free" plumbing as defined by California, Vermont, Maryland, and Louisiana state laws and the U.S. Safe Drinking Water Act
- These water coolers comply with the requirements of ADA (Americans with Disabilities Act) when properly installed

MODEL: \_\_\_\_\_ QTY: \_\_\_\_\_

PROJECT: \_\_\_\_\_

CONTACT: \_\_\_\_\_

NOTES: \_\_\_\_\_

APPROVAL: \_\_\_\_\_ DATE: \_\_\_\_\_



**WARNING:**  
Cancer and Reproductive Harm  
[www.P65Warnings.ca.gov](http://www.P65Warnings.ca.gov)



Specifications subject to change without notice



# RADII DRINKING FOUNTAIN, NON-REFRIGERATED & MODULAR AQUAPOINTE™ MECHANICAL BOTTLE FILLER **MODEL MGSBF**

## Accessories



### **OASIS VersaFilter III Universal Retrofit Kit**

OASIS Item #041253-001

- Add filtration to your unit - retrofit into all OASIS fountains and bottle fillers. Certified to NSF/ANSI 42, 53 and 401 for lead, Particulate Class I, chlorine, taste, odor and microplastics reduction to 4,750 gallons.



### **OASIS Total PFAS Universal Retrofit Kit**

OASIS Item #041253-005

- Add filtration to your unit - retrofit into all OASIS fountains and bottle fillers. Certified to NSF/ANSI 42, 53 and 401 for chlorine, taste, odor, particulate class 1, lead, cysts, Total PFAS, and microplastics reduction to 1,100 gallons.



### **OASIS Pharmaceutical Universal Retrofit Kit**

OASIS Item #041253-006

- Add filtration to your unit - retrofit into all OASIS fountains and bottle fillers. Certified to NSF/ANSI 42, 53 and 401 for chlorine, taste, odor, particulate class 1, lead, cysts, Atenolol, Bisphenol A, Carbamazepine, DEET (diethyltoluamide), Estrone, Ibuprofen, Meprobamate, Metolachlor, Naproxen, Nonyl phenol, Phenytoin and Trimethoprim, and microplastics reduction to 725 gallons.



### **One piece chrome plated brass bubbler**

OASIS Item #036700-001

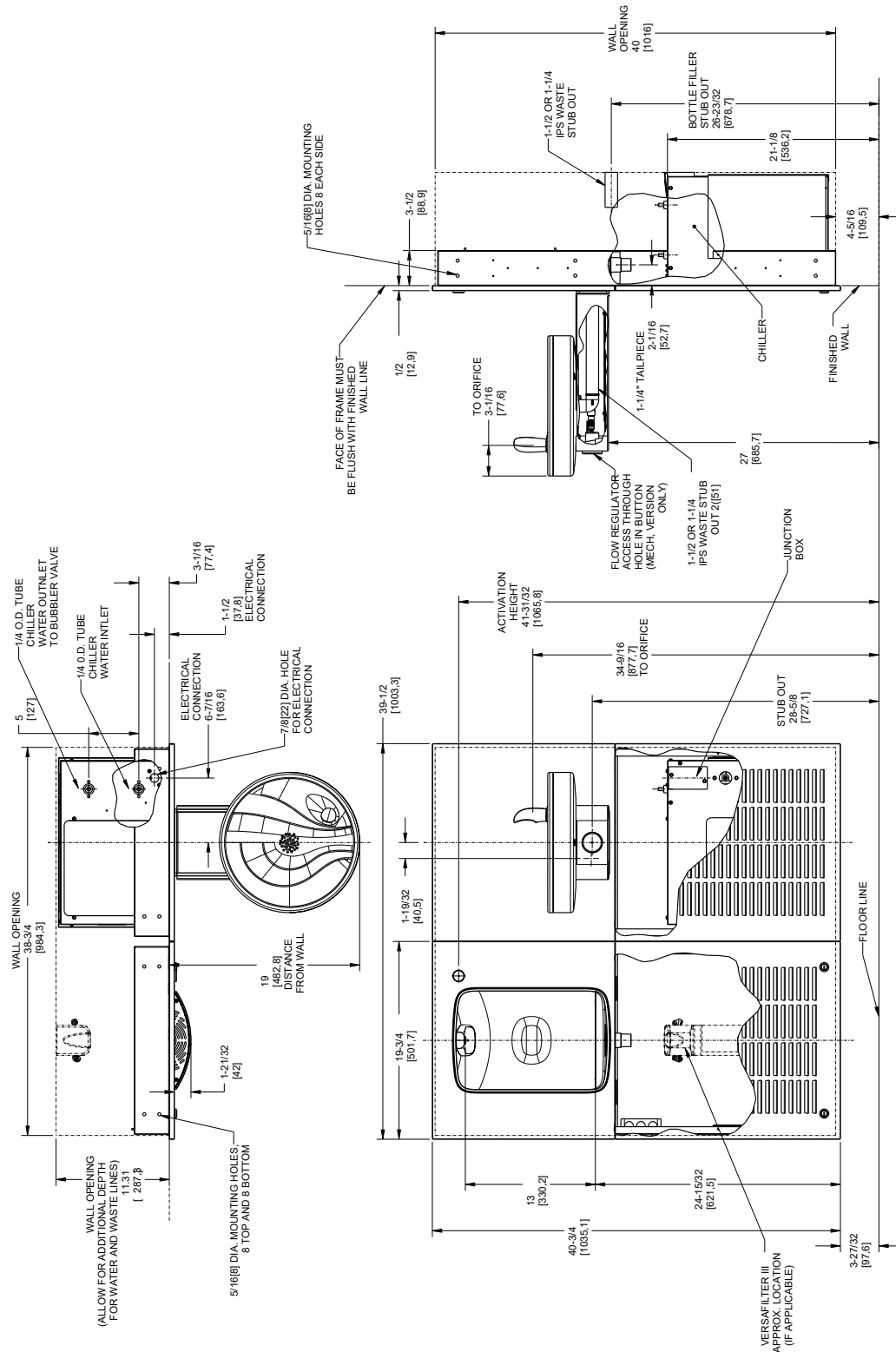


[View all filters and accessories](#)



# RADI DRINKING FOUNTAIN, NON-REFRIGERATED & MODULAR AQUAPOINTE™ MECHANICAL BOTTLE FILLER

## MODEL MGSBF



4. 115V GROUNDED NORTH AMERICAN DUPLEX RECEPTACLE REQUIRED. THIS DRINKING WATER COOLER IS INTENDED TO BE CONNECTED TO A 20 AMP MINIMUM CIRCUIT INTERRUPTING (GFCI) DEVICE TO MEET UL REQUIREMENTS.

5. FILTER INSTALLATION LOCATIONS WILL VARY BY MODEL.

NOTES:

1. RECOMMENDED ADULT HEIGHT INSTALLATION SHOWN. ADJUST VERTICAL DIMENSIONS AS REQUIRED TO COMPLY WITH FEDERAL, STATE AND LOCAL CODES.
2. STOP VALVE, TRAP, PIPE CONNECTOR TO WASTE LINE NOT PROVIDED. SHORT RADIUS TRAP REQUIRED.
3. ALL DIMENSIONS ARE IN INCHES. DIMENSIONS IN [ ] ARE IN MILLIMETERS.