



## IQ™ CENTRAL CONTROL SOFTWARE

Multi-Site Central Control for Smaller Sites

- Easy to learn software that's simple to use
- Modular system can grow with your needs
- Water management tools save you time and water

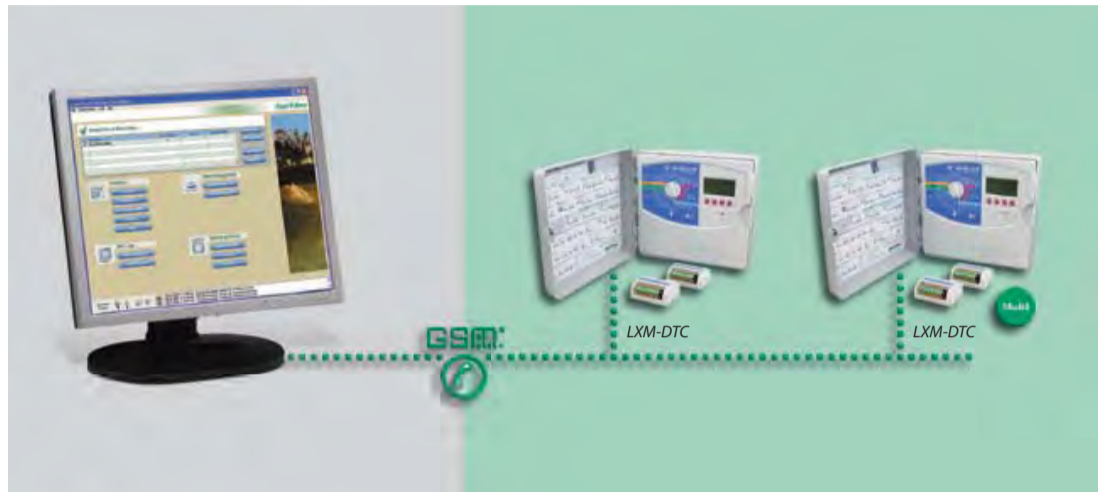
### FEATURES

#### • Central Software Features

- Operates with ESP LX Modular controllers equipped with an Upgrade kit.
- A Quick Start guide walks you through the simple steps to start and configure your software.
- Easy-to-navigate graphical user interface.
- User-defined sites (groups of satellite controllers with common adjustments).
- All ESP-LX Modular stand-alone controller features.
- Can manage up to 250 Satellites.
- Group site adjustments (auto/off, seasonal adjust% or ET).
- Program review with projected start and end time calculations.
- Dry-Run utility graphically displays program operation including flow, time, and warnings for water window and maximum flow violations.
- Real-time Satellite activity status.
- Manual station start, program start, advance, and cancel.
- RASTER™ (RAPid Station TEST Routine) provides station output test to detect and diagnose field wiring or solenoid problems.
- Auto/off dial and sensor active/bypass switch settings override from the Central Control Software.
- The ESP-LX Modular Controller and DTC-LXM Communication Interface Cartridge firmware can be re-flashed from the PC.
- View site logs and alarms on screen or in printed reports.
- Six different languages: English, Spanish, French, German, Italian, Portuguese.

#### • Water Management Features

- Station run times in seconds, minutes, and hours
- Cycle+Soak™ by station
- Program adjust % by program
- Daily seasonal adjust %
- Monthly seasonal adjust % automatically adjusts station runtimes for each month
- Daily ET adjustments
- Monthly ET adjustments automatically adjusts station run time for each month
- Programmable rain delay and calendar day off
- Programmable delay between stations by program



#### • Communication Options

- Analog phone line
- GSM modem
- Direct Hardwire

### MINIMUM COMPUTER REQUIREMENTS

- Windows XP-Professional SP2
- Pentium 1,8 GHz processor
- 512MB RAM memory
- 200 MB free hard drive space
- 1024x768 screen resolution
- CD-ROM
- Communication modem/port
- Computer not included with software package

### MODELS

IQSTARTCD: Starter Software Package, 5-Satellite Capacity

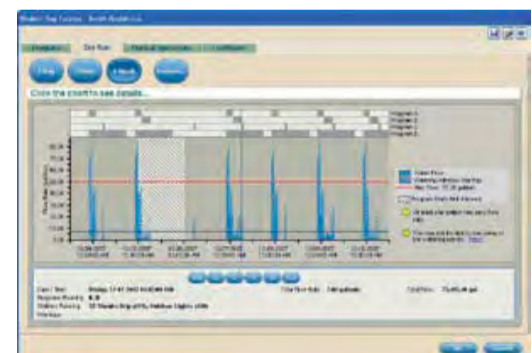
IQSTDCD: Standard Software Package, 250-Satellite Capacity



Easy-to-navigate graphical user interface



Easy-to-use program screen



Dry-run utility graphically displays program operation