

RIDGID

PRESSING

PRODUCT CATALOG



BUILT FOR THOSE WHO KNOW[®]






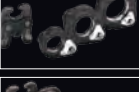




When you work in the skilled trades, you leave your mark on every job you touch. Your reputation is built over time. Day by day, job by job.

When it's your name on the line, make sure our name is on your tool. For nearly 100 years, we've built our legacy the same way you have — one job at a time. We make tools that stand up to the toughest challenges and last long enough for you to pass them down to the next generation. We deliver a better way to work.

It's more than our promise. We guarantee it.



TABLE OF CONTENTS

MINI		10	RP 115 MINI PRESS TOOL
		11	MINI JAWS FOR PROGRESS® OR PUREFLOW®
COMPACT		12	RP 240 & RP 241 PRESS TOOLS
		15	COMPACT JAWS FOR PROGRESS, PUREFLOW, MEGAPRESS®, ASTM F 1807, AND RLS®
		17	TIGHT ACCESS RINGS FOR PROGRESS OR MEGAPRESS
STANDARD		18	RP 350 PRESS TOOL
		19	RP 351 PRESS TOOL
		20	STANDARD JAWS FOR PROGRESS OR PUREFLOW
		21	TIGHT ACCESS RINGS FOR PROGRESS
		22	RINGS FOR PROGRESS XL-C®
		23	STANDARD JAWS AND TIGHT ACCESS RINGS FOR MEGAPRESS
		24	RP 342-XL PRESS TOOL
EXTENDED		25	PRESS BOOSTER
		26	STRUTSLAYR® STRUT SHEAR HEAD
		27	PRESS SNAP® SOIL PIPE CUTTER
		28	MANUAL PRESS TOOLS
		29	RIDGID LINK™

PRESS CONFIDENTLY. PRESS WITH THE BEST.

RIDGID® press tools save you time and money by delivering reliable performance press after press. Every generation of press tools works harder — and smarter — than the last. We are constantly working to reduce in-use tool weight while increasing overall performance. That's why we are the #1 press tool manufacturer since 1999. **RIDGID: BUILT FOR THOSE WHO KNOW.®**



LOWER TOTAL
INSTALLATION COST.



WATERTIGHT
CONNECTIONS
IN SECONDS.



PRESS CONNECTIONS
ON A "WET" SYSTEM.



NO OPEN FLAMES.
NO BURN PERMITS.
NO ONSITE FIRE WATCH.



REDUCES VITAL
EQUIPMENT SHUTDOWNS.

#1 IN NORTH AMERICA

RIDGID® revolutionized the North American market by introducing press technology in 1999. Since then, RIDGID has become the most recognizable and trusted brand for press tools. Through years of dedication to delivering a better way to work, RIDGID stands as the #1 pressing platform in North America.

RUGGED DURABILITY.

RIDGID tools are tested under the harshest conditions to ensure that each tool will work properly in any environment. RIDGID designers, engineers and testers work closely to deliver durable products that offer quality in every press. Rigorous lab testing ensures that every RIDGID press tool is ready for even the toughest of jobs.

PURPOSE-BUILT.

RIDGID® remains the #1 press tool in North America due to constant innovation. They introduced the first lithium-ion battery for pressing, the first soil pipe cutter actuated by a press tool, and the first tools for pressing iron pipe. RIDGID continued its tradition of purpose-built innovations with the RP 342-XL, the press tool that presses any size and material pipe that can currently be pressed. We then upped our game again with the RP 350 and 351's ergonomic design - letting you press in tight spaces, while its brushless motor delivers 100,000+ cycles.

SMALLER. FASTER. SMARTER.

Every generation of RIDGID press tools works harder and smarter than the last. The RP 115 is the smallest, lightest press tool on the market, while still packing big performance. The RP 240 and 241 compact profiles let you work in difficult jobsite conditions with ease. Current models are equipped with Bluetooth® compatibility, so the tools can interface with RIDGID Link™, an app that shares valuable insights about the tool.

#1 IN PRESS TOOLS SINCE 1999.

RIDGID® press tools are unsurpassed in making quick and reliable connections on copper, carbon steel, stainless steel and PEX tubing. No open flames. No mess. Just secure connections in less than five seconds – wet or dry.

- KEY FEATURES**
- FLAMELESS SYSTEM
 - FASTER CONNECTIONS
 - ALL-DAY POWER



WHICH TOOL IS RIGHT FOR ME?

	MINI (RP 115) PAGES 10-11	COMPACT (RP 240 and RP 241) PAGES 12-14	STANDARD (RP 350 and RP 351) PAGES 18-19	EXTENDED (RP 342-XL and Press Booster**) PAGES 24-25
PEX	1/2" - 3/4"	1/2" - 1 1/2"	1/2" - 2"	1/2" - 2"
Copper	1/2" - 3/4"	1/2" - 1 1/4"	1/2" - 4"	1/2" - 4"
Stainless	1/2" - 3/4"	1/2" - 1 1/4"	1/2" - 4"	1/2" - 4"
Carbon Steel	N/A	1/2" - 1"	1/2" - 2"*	1/2" - 4"

RESIDENTIAL

COMMERCIAL

INDUSTRIAL AND MARINE

*Press Booster extends capacity to 4"
**Standard Press Tool required for Press Booster use



PRESSING CROSS REFERENCE GUIDE

	COMPACT TOOL APPLICATIONS				PEX	
	TUBING	PIPE	PIPE	PIPE		
	Copper	Stainless Steel	Stainless Steel	Carbon Steel		
JAWS	<p>RLS® Jaws 1/4" - 1 3/8" Cat. #'s 1/4" - 55108; 5/16" - 55113; 3/8" - 55118; 1/2" - 55123; 5/8" - 55128; 3/4" - 55133; 7/8" - 55138R; 1 1/8" - 55143; 1 3/8" - 55148</p>	<p>ProPress® Jaws 1/2" - 1 1/4" Cat. #'s 1/2" - 16958; 3/4" - 16963; 1" - 16978; 1 1/4" - 31228</p>	<p>MegaPress® Jaws 1/2" - 1" Cat. #'s 1/2" - 48433; 3/4" - 48438; 1" - 48443</p>	<p>PureFlow® Jaws 3/8" - 1 1/2" Cat. #'s 3/8" - 17003; 1/2" - 17008; 5/8" - 19813; 3/4" - 17013; 1" - 17018; 1 1/4" - 22683; 1 1/2" - 22688</p>	<p>ASTM F 1807 Jaws 1/2" - 1 1/4" Cat. #'s 1/2" - 22958; 3/4" - 22968; 1" - 22973; 1 1/4" - 22978</p>	
RINGS + RING ACTUATORS	<p>C1 Actuator 1/2" - 1 1/4" Cat. # 26163</p>		<p>ProPress Rings 1/2" - 1 1/4" Cat. #'s 1/2" - 27998; 3/4" - 28003; 1" - 28008R; 1 1/4" - 28013</p>	<p>MegaPress Rings 1/2" - 3/4" Cat. #'s 1/2" - 48448; 3/4" - 48453</p>		
BATTERY PLATFORM	<p>12V Battery and Charger Cat. #'s 2.5 Ah Battery - 55183; 12V Battery Charger - 55193</p> <p><small>*Maximum Battery pack voltage (V Max) is 12V, the nominal voltage is 10.8V. Max V represents the open circuit battery voltage measured on a fully charged battery without a workload.</small></p>					



STANDARD AND EXTENDED TOOL APPLICATIONS

	TUBING		PIPE		PEX	STANDARD PRESS TOOL APPLICATIONS
	Copper	Stainless Steel	Stainless Steel	Carbon Steel		
JAWS	<p>ProPress® Jaws 1/2" - 2" Cat. #'s 1/2" - 76652; 3/4" - 76657; 1" - 76662; 1 1/4" - 76667; 1 1/2" - 76672; 2" - 76677</p>	<p>MegaPress® Jaws 1/2" - 1" Cat. #'s 1/2" - 37958; 3/4" - 37963; 1" - 37968</p>	<p>PureFlow® Jaws 1/2" - 2" Cat. #'s 1/2" - 22653 3/4" - 22658 3/4" - 22663 1" - 22668 1 1/4" - 22673 1 1/2" - 22678 2" - 35343</p>	<p>Press Snap® Cutter Cat. # 34403R (Provides a fast and easy way to cut 1 1/2" - 4" cast iron soil pipe)</p>		
RINGS + RING ACTUATORS	<p>V1 Actuator 1/2" - 1 1/4" Cat. # 28033</p>		<p>ProPress Rings 1/2" - 1 1/4" Cat. #'s 1/2" - 27998; 3/4" - 28003; 1" - 28008R; 1 1/4" - 28013</p>	<p>MegaPress Rings 1/2" - 3/4" Cat. #'s 1/2" - 48448; 3/4" - 48453</p>		
	<p>(For use with BOTH the V1 Actuator and Compact Tool C1 Actuator)</p>					
	<p>V2 Actuator 1 1/4" - 4" Cat. # 21878</p>		<p>ProPress Rings 1 1/2" - 2" Cat. # 1 1/2" - 28018; 2" - 28023 (For use with the V2 Actuator)</p>	<p>MegaPress Rings 1" - 2" Cat. #'s 1" - 66133; 1 1/4" - 37973; 1 1/2" - 37978; 2" - 37983 (For use with the V2 Actuator)</p>		
	<p>ProPress XL-C® Rings 2 1/2" - 4" Cat. #'s 2 1/2" - 20543; 3" - 20548; 4" - 20553 (For use with the V2 Actuator)</p>		<p>Press Booster Cat. # 60658 60638 Press Booster Kit (For 2 1/2" - 4" carbon steel pipe and for use with RIDGID Standard Press Tools only)</p>			
	<p>MegaPress XL Rings 2 1/2" - 4" Cat. #'s 2 1/2" - 60643; 3" - 60648; 4" - 60653 (Requires RP 342-XL or Press Booster)</p>		<p>Viega® Z3 Actuator Cat. # 67818 (For use with the RP 342-XL only)</p>			
BATTERY PLATFORM	<p>18V Battery and Charger Cat. #'s 2.5 Ah LI Battery - 56513; 5.0 Ah LI Battery - 56518; 120V Charger - 64383; Set of 1 Battery/1 Charger + LIO - 66003; Set of 2 Batteries/1 Charger + LIO - 66013</p>					

PRESSING MINI PRESS TOOL

RP 115 MINI PRESS TOOL

NEW

CAPACITY: 1/2" TO 3/4" (COPPER, STAINLESS STEEL AND PEX)

With the ability to press 75% of the fittings in the market, the RIDGID® 115 Mini Press Tool delivers quicker payback and maximum value on the job. A lightweight profile and 210° swivel ensures effortless operation and easy access in tight spots. With the RP 115, introducing pressing to your business has never been more accessible.

Kits

CATALOG NO.	DESCRIPTION	WEIGHT LB.
72553	RP 115 Battery Kit with ProPress® Jaws (1/2" – 3/4")	10.4
72543	RP 115 Battery Kit with PureFlow® Jaws (1/2" – 3/4")	10.4
72558	RP 115 Battery Kit with ProPress & PureFlow Jaws (1/2" – 3/4")	14.8

Specifications

- ▶ **WEIGHT**
Tool Only – 2.9 lbs.
Tool with Battery – 3.3 lbs.
Tool with Battery and Jaw – 5.5 lbs.
- ▶ **LENGTH**
Tool Only – 13"
Tool with Jaw – 14.6"
- ▶ **HEIGHT**
2.5"
- ▶ **HYDRAULIC RAM OUTPUT**
3,400 lbs. (15kN)
- ▶ **CYCLE TIME**
Standard ~3 seconds
- ▶ **SERVICE INTERVAL**
20,000 Cycles
- ▶ **POWER**
12V Advanced Lithium-ion 2.5 Ah Battery
- ▶ **OPERATING TEMPERATURE RANGE**
15° F to 104° F (-10° C to 40° C)
- ▶ **LIGHTING**
LED
- ▶ **210° HEAD SWIVEL**



MINI JAWS FOR PROPRESS® OR PUREFLOW® - 1/2" TO 3/4"

FOR USE WITH RP 115



ProPress for Copper and Stainless



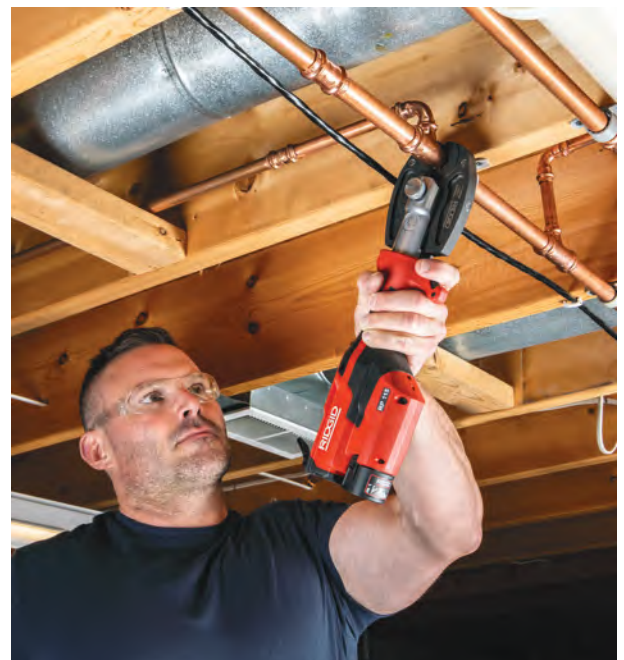
PureFlow for PEX

Jaws For ProPress (Copper and Stainless)

CATALOG NO.	DESCRIPTION	WEIGHT LB.
72578	1/2" Mini Jaw for ProPress	2.2
72583	3/4" Mini Jaw for ProPress	2.2

Jaws For PureFlow (PEX)

CATALOG NO.	DESCRIPTION	WEIGHT LB.
75343	1/2" Mini Jaw for PureFlow	2.2
72568	3/4" Mini Jaw for PureFlow	2.2



PRESSING
COMPACT
PRESS TOOLS

THE PRESSING TOOLS MORE PROFESSIONALS TRUST.

The RIDGID® RP 240 and 241 are built to keep you moving. Engineered lighter and more compact, they easily connect to the RIDGID Link™ app through your mobile device.



RP 240 PRESS TOOL

CAPACITY: ½" TO 1¼" (COPPER AND STAINLESS STEEL); ½" TO 1⅜" (REFRIGERATION GRADE COPPER); ⅜" TO 1½" (PEX); ½" TO 1" (CARBON STEEL)

The RP 240 is the latest pistol-grip™ tool in the RIDGID Compact Press Tool family. This low-profile design is lightweight and balanced. Features include a forward-positioned handle for better ergonomic control. The RP 240 offers Bluetooth® connectivity (connecting the tool to the RIDGID Link™ app), which allows users to track numbers of cycles, battery information, and much more.

CATALOG NO.	DESCRIPTION	WEIGHT LB.
57418	RP 240 Press Tool Only	4.9

Kits

CATALOG NO.	DESCRIPTION	WEIGHT LB.
57398	RP 240 Kit with ½" - 1¼" ProPress® Jaws	24.5
57403	RP 240 Kit with ½" - 1" ProPress Jaws	22.5
57408	RP 240 Kit with ½", ¾" and 1" PureFlow® Jaws	22.5
57413	RP 240 Kit without Jaws	14.5

All RP 240 Kits include the RP 240, 2 12V Lithium-ion batteries, battery charger, and carrying case. (Excluding Press Tool Only Kit)



SPECIFICATIONS

- ▶ **WEIGHT**
Tool Only – 4.9 lbs.
Tool with Battery – 5.3 lbs.
Tool with Battery and ½" Jaws – 7.4 lbs.
- ▶ **LENGTH**
13"
- ▶ **HEIGHT**
9.5"
- ▶ **HYDRAULIC RAM OUTPUT**
5,400 lbs. (24kN)
- ▶ **CYCLE TIME**
~5 Seconds
- ▶ **SERVICE INTERVAL**
32,000 Cycles
- ▶ **BATTERY**
12V Advanced Lithium-ion 2.5
- ▶ **PRESSES PER CHARGE****
140+ Crimps Per Charge
- ▶ **OPERATING TEMPERATURE RANGE**
15° F to 140° F (-10° C to 60° C)
- ▶ **LIGHTING**
Large LED Light
- ▶ **180° BARREL/JAW SWIVEL**

*Maximum Battery pack voltage (V Max) is 12V, the nominal voltage is 10.8V. Max V represents the open circuit battery voltage measured on a fully charged battery without a workload.



12V Advanced Lithium-ion 2.5 Battery*



**Dependent upon pipe material, pipe size, and type of fitting.

PRESSING COMPACT PRESS TOOLS

RP 241 PRESS TOOL

CAPACITY: ½" TO 1¼" (COPPER AND STAINLESS STEEL); ½" TO 1¾" (REFRIGERATION GRADE COPPER); ¾" TO 1½" (PEX); ½" TO 1" (CARBON STEEL)

The RP 241 is the latest tool in the RIDGID® Compact Press Tool family. This low-profile design is lightweight and balanced. Features include an ergonomic design for one-handed operation to help you easily work in tight spaces. The RP 241 offers Bluetooth® connectivity (connecting the tool to the RIDGID Link™ app), which allows users to track numbers of cycles, battery information, and much more.

CATALOG NO.	DESCRIPTION	WEIGHT LB.
57388	RP 241 Press Tool Only	4.8

Kits

CATALOG NO.	DESCRIPTION	WEIGHT LB.
57363	RP 241 Kit with ½" - 1¼" ProPress® Jaws	24.5
57373	RP 241 Kit with ½" - 1" ProPress Jaws	22.5
57378	RP 241 Kit with ½", ¾" and 1" PureFlow® Jaws	22.5
57383	RP 241 Kit without Jaws	14.5
73678	RP 241 Kit with ¼" - 1¾" RLS® Jaws	28
74963	RP 241 Kit with ¼" - 7⁄8" RLS Jaws	23

All RP 241 Kits include the RP 241, 2 12V Lithium-ion batteries, battery charger, and carrying case. (Excluding Press Tool Only Kit)



Accessories For Both RP 240 & RP 241 Press Tools

CATALOG NO.	DESCRIPTION	WEIGHT LB.
55183	12V Advanced Lithium-ion 2.5 Ah Battery	0.5
55193	12V Advanced Lithium-ion Battery Charger	1.5
57423	RP 240 Carrying Case Only	1.0
57393	RP 241 Carrying Case Only	1.0
73688	RP 241 and RLS Jaw Carrying Case	1.0

SPECIFICATIONS

- ▶ **WEIGHT**
Tool Only – 4.8 lbs.
Tool with Battery – 5.3 lbs.
Tool with Battery and ½" Jaws – 7.4 lbs.
- ▶ **LENGTH**
15.8"
- ▶ **HEIGHT**
4.3"
- ▶ **HYDRAULIC RAM OUTPUT**
5,400 lbs. (24kN)
- ▶ **CYCLE TIME**
~5 Seconds
- ▶ **SERVICE INTERVAL**
32,000 Cycles
- ▶ **BATTERY**
12V Advanced Lithium-ion 2.5
*Maximum Battery pack voltage (V Max) is 12V, the nominal voltage is 10.8V. Max V represents the open circuit battery voltage measured on a fully charged battery without a workload.
- ▶ **PRESSES PER CHARGE****
140+ Crimps Per Charge
- ▶ **OPERATING TEMPERATURE RANGE**
15° F to 140° F (-10° C to 60° C)
- ▶ **LIGHTING**
Large LED Light
- ▶ **180° BARREL/JAW SWIVEL**



**Dependent upon pipe material, pipe size, and type of fitting.

COMPACT JAWS FOR PROPRESS®, PUREFLOW®, MEGAPRESS® & ASTM F 1807

FOR USE WITH RP 240, RP 241, RP 210-B, RP 200-B, RP 100-B

Jaws For ProPress (Copper and Stainless) – ½" to 1¼"

CATALOG NO.	DESCRIPTION	WEIGHT LB.
16958	½" Jaw for ProPress	2.5
16963	¾" Jaw for ProPress	2.5
16978	1" Jaw for ProPress	2.5
31228	1¼" Jaw for ProPress	2.5



Copper and Stainless

Jaws For PureFlow (PEX) – ⅜" to 1½"

CATALOG NO.	DESCRIPTION	WEIGHT LB.
17003	⅜" Jaw for PureFlow	2.5
17008	½" Jaw for PureFlow	2.5
19813	⅝" Jaw for PureFlow	2.5
17013	¾" Jaw for PureFlow	2.5
17018	1" Jaw for PureFlow	2.5
22683	1¼" Jaw for PureFlow	2.5
22688	1½" Jaw for PureFlow	2.5



PEX for Viega® PureFlow

Jaws For MegaPress – ½" to 1"

CATALOG NO.	DESCRIPTION	WEIGHT LB.
48433	½" Jaw for MegaPress	3.0
48438	¾" Jaw for MegaPress	3.2
48443	1" Jaw for MegaPress	2.5
66983	Kit, ½", ¾", 1" Jaws for MegaPress	11.0



MegaPress

Jaws For ASTM F 1807 (PEX) – ½" to 1¼"

CATALOG NO.	DESCRIPTION	WEIGHT LB.
22958	½" Jaw for ASTM F 1807	2.7
22968	¾" Jaw for ASTM F 1807	2.4
22973	1" Jaw for ASTM F 1807	2.4
22978	1¼" Jaw for ASTM F 1807	3.1



ASTM F 1807 (PEX)

For compatible Compact Press Tools, see pages 12, 13, 14

PRESSING
COMPACT PRESS
TOOL APPLICATIONS

COMPACT JAWS FOR RLS®

FOR USE WITH RP 240, RP 241, RP 210-B, RP 200-B, RP 100-B



RLS (PEX)

Jaws for RLS – 1/4" to 1 3/8"

CATALOG NO.	DESCRIPTION	WEIGHT LB.
55108	1/4" Compact Jaw for RLS	2.5
55113	3/8" Compact Jaw for RLS	2.5
55118	1/2" Compact Jaw for RLS	2.5
55123	5/8" Compact Jaw for RLS	2.5
55128	3/4" Compact Jaw for RLS	2.5
55133	7/8" Compact Jaw for RLS	2.5
55138R	1-1/8" Compact Jaw for RLS	2.5
55148	1-3/8" Compact Jaw for RLS	2.5

For compatible Compact Press Tools, see pages 12, 13, 14

TIGHT ACCESS RINGS FOR PROPRESS® OR MEGAPRESS®

FOR PROPRESS COPPER, STAINLESS STEEL AND CARBON STEEL FITTINGS

- ▶ V1 and V2 Kits are designed for RIDGID® Standard Press Tools (RP 350, RP 351, RP 342-XL, RP 340, 320-E, CT400)
- ▶ C1 Compact Kits are designed for RIDGID Compact Press Tools (RP 240, RP 241)
- ▶ Rings can be used with all RIDGID Press Tools (Standard and Compact)
- ▶ Ball-tip actuator swivels 180° for use in tight spaces

Kits

CATALOG NO.	MODEL NO.	DESCRIPTION	WEIGHT LB.
28048	V1/C1	V1/C1 Combo Kit, ½"-1¼" Rings for ProPress	12.9
28043	C1	C1 Kit, ½"-1¼" Rings for ProPress	8.1

Rings for ProPress – ½" to 1¼"

CATALOG NO.	ACTUATOR	DESCRIPTION	WEIGHT LB.
27998	V1/C1	½" Ring for ProPress	0.5
28003	V1/C1	¾" Ring for ProPress	0.8
28008R	V1/C1	1" Ring for ProPress	1.0
28013	V1/C1	1¼" Ring for ProPress	1.0

Rings for MegaPress – ½" to ¾"

CATALOG NO.	ACTUATOR	DESCRIPTION	WEIGHT LB.
48448	V1/C1	½" Ring for MegaPress	1.0
48453	V1/C1	¾" Ring for MegaPress	1.0
66993	C1	Kit, ½", ¾", 1" Compact Jaws and ½", ¾" Rings for MegaPress	16.0
66988	C1	Kit, ½", ¾" Rings for MegaPress and C1 Actuator	8.0

Actuators

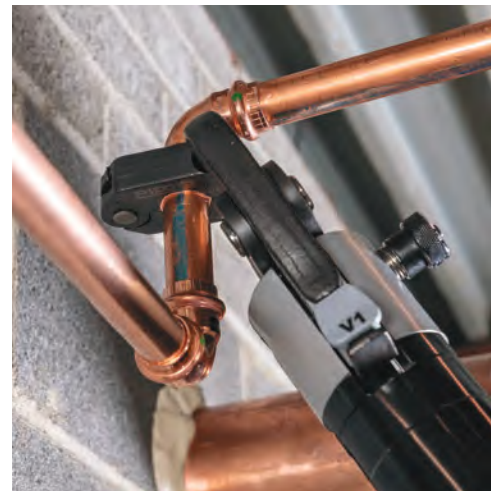
CATALOG NO.	ACTUATOR	DESCRIPTION	WEIGHT LB.
26163	C1	C1 Actuator for ½" - 1¼"	2.1

Accessories

CATALOG NO.	MODEL NO.	DESCRIPTION	WEIGHT LB.
28028	V1/C1	Carrying Case #1 for ½" - 1¼"	3.0



C1 Combo Kit, ½", ¾", 1", 1¼" Rings



For compatible Compact and Standard Press Tools, see pages 12, 13, 14, 18, 19

PRESSING STANDARD PRESS TOOLS

RP 350 PRESS TOOL

**CAPACITY: ½" TO 4" (CARBON STEEL*,
COPPER AND STAINLESS STEEL);
½" TO 2" (PEX)**

*PRESS BOOSTER IS NEEDED FOR 2½" TO 4" CARBON STEEL

With a brushless motor, the RP 350 eliminates the need for scheduled maintenance and is capable of over 100,000 cycles. 360° swivel and an ergonomic pistol-grip™ design get you in and out of tight spots with ease. Total compatibility with all RIDGID® Standard Series applications gives you the flexibility and adjustability you need from job to job.

RP 350 Battery Press Tool

CATALOG NO.	DESCRIPTION	WEIGHT LB.
67053	RP 350 Battery Kit with ½" - 2" Jaws for ProPress®	50.8
67058	RP 350 Battery Kit with ½" - 1" Jaws for ProPress	30.8
70138	RP 350 Battery Kit with ½" - 1" Jaws for MegaPress®	26.5
67063	RP 350 Battery Kit (no jaws)	18.8
67068	RP 350 Corded Kit with ½" - 2" Jaws for ProPress	47.8
67073	RP 350 Corded Kit with ½" - 1" Jaws for ProPress	27.8
67078	RP 350 Corded Kit (no jaws)	15.8
67083	RP 350 Press Tool Only	7.1

Specifications

- ▶ **WEIGHT**
Tool Only – 7.1 lbs.
- ▶ **LENGTH**
11.3"
- ▶ **HEIGHT**
11"
- ▶ **HYDRAULIC RAM OUTPUT**
7,200 lbs.
- ▶ **CYCLE TIME**
~4 seconds
- ▶ **SERVICE INTERVAL**
No Scheduled Maintenance
- ▶ **POWER**
18V Lithium-ion Battery
- ▶ **OPERATING TEMPERATURE RANGE**
15° F TO 122° F (-10° C TO 50° C)
- ▶ **LIGHTING**
LED light for low or no-light environment
- ▶ **360° BARREL/JAW SWIVEL**



BRUSHLESS MOTOR
Increases efficiency and durability



NO SCHEDULED MAINTENANCE
Reduces downtime



STANDARD PRESS TOOL APPLICATIONS

STANDARD JAWS FOR PUREFLOW®



Page 20

STANDARD JAWS AND TIGHT ACCESS RINGS FOR PROGRESS®



Pages 20 & 21

RINGS FOR PROGRESS XL-C®



Page 22

STANDARD JAWS AND TIGHT ACCESS RINGS FOR MEGAPRESS®



Page 23

RP 351 PRESS TOOL

**CAPACITY: ½" TO 4" (CARBON STEEL*,
COPPER AND STAINLESS STEEL);
½" TO 2" (PEX)**

*PRESS BOOSTER IS NEEDED FOR 2½" TO 4" CARBON STEEL

The RP 351 is our latest in-line Standard Press Tool, optimally balanced to reduce jobsite fatigue. With no scheduled maintenance and more presses per charge, this tool delivers reliability and efficiency on every job. 360° swivel helps you press in tight spots, while total compatibility with all RIDGID® Standard Series applications delivers valuable versatility.

RP 351 Battery Press Tool

CATALOG NO.	DESCRIPTION	WEIGHT LB.
67178	RP 351 Battery Kit with ½" - 2" Jaws for ProPress®	50.7
67183	RP 351 Battery Kit with ½" - 1" Jaws for ProPress	30.7
70818	RP 351 Battery Kit with ½" - 1" Jaws for MegaPress®	26.4
67188	RP 351 Battery Kit (no jaws)	18.7
67193	RP 351 Corded Kit with ½" - 2" Jaws for ProPress	47.7
67198	RP 351 Corded Kit with ½" - 1" Jaws for ProPress	27.7
67218	RP 351 Corded Kit (no jaws)	15.7
67223	RP 351 Press Tool Only	6.8



**360°
ENDLESS
HEAD SWIVEL**
Gets in and out of
tight spaces



**MOST ADVANCED LED
INTERFACE & LIGHTING**
Ensures accuracy in
low-light situations

Specifications

- ▶ **WEIGHT**
Tool Only – 6.8 lbs.
- ▶ **LENGTH**
15.6"
- ▶ **HEIGHT**
4.6"
- ▶ **HYDRAULIC RAM OUTPUT**
7,200 lbs.
- ▶ **CYCLE TIME**
4.5 seconds
- ▶ **SERVICE INTERVAL**
No Scheduled Maintenance
- ▶ **POWER**
18V Lithium-ion Battery
- ▶ **OPERATING TEMPERATURE RANGE**
15° F TO 122° F (-10° C TO 50° C)
- ▶ **LIGHTING**
LED light for low or no-light environment
- ▶ **360° BARREL/JAW SWIVEL**



STRUTSLAYR® STRUT SHEAR HEAD



Page 26

PRESS SNAP® SOIL PIPE CUTTER



Page 27

VEIGA® Z3 ACTUATOR FOR RP 342-XL



Page 24



PRESSING
STANDARD PRESS
TOOL APPLICATIONS

STANDARD JAWS FOR PROPRESS® OR PUREFLOW® - ½" TO 2"

FOR USE WITH RP 350, RP 351, RP 342-XL, RP 340, 320-E, CT400



ProPress for Copper and Stainless

PureFlow for PEX

Jaws For ProPress (Copper and Stainless)

CATALOG NO.	DESCRIPTION	WEIGHT LB.
76652	½" Jaw for ProPress	4.0
76657	¾" Jaw for ProPress	4.3
76662	1" Jaw for ProPress	4.5
76667	1¼" Jaw for ProPress	4.8
76672	1½" Jaw for ProPress	6.5
76677	2" Jaw for ProPress	10.0

Jaws For PureFlow (PEX)

CATALOG NO.	DESCRIPTION	WEIGHT LB.
22653	½" Jaw for PureFlow	4.0
22658	¾" Jaw for PureFlow	4.3
22663	¾" Jaw for PureFlow	4.5
22668	1" Jaw for PureFlow	4.5
22673	1¼" Jaw for PureFlow	4.8
22678	1½" Jaw for PureFlow	6.5
35343	2" Jaw for PureFlow	10.0



TIGHT ACCESS RINGS FOR PROPRESS® - ½" TO 2"

FOR PROPRESS COPPER AND STAINLESS STEEL FITTINGS

- ▶ V1 and V2 Kits are designed for RIDGID® Standard Press Tools (RP 350, RP 351, RP 342-XL, RP 340, 320-E, CT400)
- ▶ Rings can be used with all RIDGID Press Tools (Standard and Compact)
- ▶ Ball-tip actuator swivels 180° for use in tight spaces

Kits

CATALOG NO.	ACTUATOR	DESCRIPTION	WEIGHT LB.
27423	V1	V1 Kit, ½" - 1¼" Rings for ProPress	10.8
27428	V2	V2 Kit, 1½" - 2" Rings for ProPress	13.6
28048	V1/C1	V1/C1 Combo Kit, ½" - 1¼" Rings for ProPress	12.9

Rings for ProPress

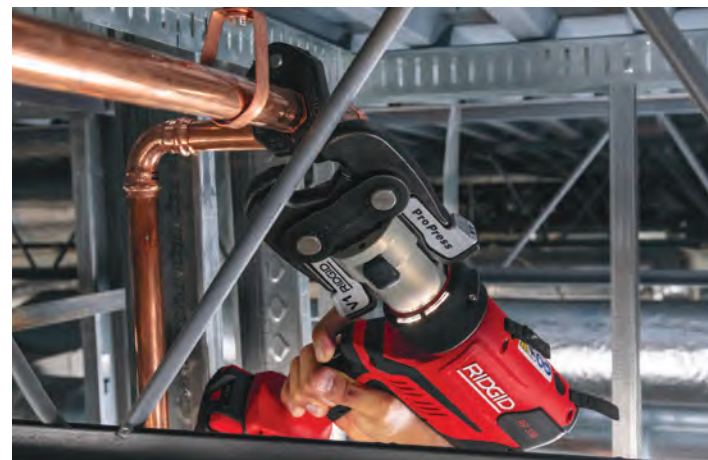
CATALOG NO.	ACTUATOR	DESCRIPTION	WEIGHT LB.
27998	V1/C1	½" Ring for ProPress	0.5
28003	V1/C1	¾" Ring for ProPress	0.8
28008R	V1/C1	1" Ring for ProPress	1.0
28013	V1/C1	1¼" Ring for ProPress	1.0
28018	V2	1½" Ring for ProPress	1.5
28023	V2	2" Ring for ProPress	2.0

Actuators

CATALOG NO.	ACTUATOR	DESCRIPTION	WEIGHT LB.
28033	V1	V1 Press Ring Actuator	4.9
21878	V2	V2 Press Ring Actuator	6.7

Accessories

CATALOG NO.	ACTUATOR	DESCRIPTION	WEIGHT LB.
28028	V1/C1	Carrying Case #1 for ½" - 1¼"	3.0
28038	V2	Carrying Case #2 for 1½" - 2"	3.0



For compatible Compact and Standard Press Tools, see pages 12, 13, 14, 18, 19

PRESSING
STANDARD PRESS
TOOL APPLICATIONS

RINGS FOR PROPRESS® XL-C® - 2½" TO 4"

FOR PROPRESS XL-C COPPER AND STAINLESS STEEL FITTINGS
FOR USE WITH RP 350, RP 351, RP 342-XL, RP 340, 320-E, CT400



Kit

CATALOG NO.	ACTUATOR	DESCRIPTION	WEIGHT LB.
20483	V2	2½" - 4" Rings for ProPress XL-C, V2 Actuator and Case	40.3

SAVE TIME

Connect 2½" to 4" copper and stainless in 5 seconds.

ALL THE RIGHT ANGLES

Ball-tip V2 actuator swivels 180° for use in tight spaces.

Rings

CATALOG NO.	ACTUATOR	DESCRIPTION	WEIGHT LB.
20543	V2	2½" Ring for ProPress XL-C	6.0
20548	V2	3" Ring for ProPress XL-C	9.8
20553	V2	4" Ring for ProPress XL-C	11.8

Actuator

CATALOG NO.	ACTUATOR	DESCRIPTION	WEIGHT LB.
21878	V2	V2 Press Ring Actuator	6.7

Accessory

CATALOG NO.	DESCRIPTION	WEIGHT LB.
21103	XL-C Carrying Case Only	7.8

For compatible Standard Press Tools, see pages 18, 19

STANDARD JAWS AND TIGHT ACCESS RINGS FOR MEGAPRESS® - ½" TO 2"

FOR USE WITH RP 350, RP 351, RP 342-XL, RP 340, 320-E, CT400

- ▶ Save time and cost by press connecting carbon steel pipe
- ▶ Flameless system eliminates the need for hot work permits
- ▶ Jointly developed and tested with Viega®

Kits

CATALOG NO.	DESCRIPTION	WEIGHT LB.
48553	½" - 2" MegaPress Kit	48.5
48558	½" - 1" MegaPress Kit	23.1

Jaws for MegaPress

CATALOG NO.	DESCRIPTION	WEIGHT LB.
37958	½" Jaw for MegaPress	4.9
37963	¾" Jaw for MegaPress	5.2
37968	1" Jaw for MegaPress	6.8

Rings for MegaPress

CATALOG NO.	ACTUATOR	DESCRIPTION	WEIGHT LB.
48448	V1/CI	½" Ring for MegaPress	1.0
48453	V1/CI	¾" Ring for MegaPress	1.0
66133	V2	1" Ring for MegaPress	2.4
37973	V2	1¼" Ring for MegaPress	6.0
37978	V2	1½" Ring for MegaPress	6.5
37983	V2	2" Ring for MegaPress	6.0

Actuator

CATALOG NO.	DESCRIPTION	WEIGHT LB.
21878	V2 Press Ring Actuator	6.7

Accessories

CATALOG NO.	DESCRIPTION	WEIGHT LB.
37993	½" - 1" MegaPress Prep Tool	1.8
37988	1¼" - 2" MegaPress Prep Tool	2.3
38008	Abrasive Strips (Box of 10) ½" - 1"	0.3
38003	Abrasive Strips (Box of 10) 1" - 2"	0.3
48563	MegaPress Carrying Case	6.4



½" - 2" MegaPress Kit



½", ¾" and 1" Rings for MegaPress



MegaPress Prep Tool



Abrasive strips

For compatible Standard Press Tools, see pages 18, 19

**PRESSING
EXTENDED
PRESS TOOLS**

RP 342-XL PRESS TOOL

CAPACITY: ½" TO 4" (CARBON STEEL, COPPER AND STAINLESS STEEL); ½" TO 2" (PEX)

The RP 342-XL is the first ever RIDGID® press tool that works on any size and material pipe. From ½" PEX all the way up to 4" carbon steel*, one tool can press it all. It also works with the full line of RIDGID Standard Series applications including fan favorites like STRUTSLAYR® and Press Snap® Soil Pipe Cutter. Its ergonomic design and versatile applications make it the tool you want for every job.

CATALOG NO.	DESCRIPTION	WEIGHT LB.
65468	RP 342-XL Kit	22.7
65473	RP 342-XL with Viega® Z3 Actuator	35.7
65478	RP 342-XL with Viega Z3 Actuator and 2½" - 4" MegaPress XL Rings	65.1

*Viega Z3 actuator is required for 2 ½" to 4" carbon steel applications



QUICK SWITCH[®]
COLLAR
For standard and extended applications

Specifications

- ▶ **WEIGHT**
Tool Only – 10.8 lbs.
Tool with Battery – 11 lbs.
- ▶ **LENGTH**
20.9"
- ▶ **HEIGHT**
10.5"
- ▶ **HYDRAULIC RAM OUTPUT**
7,200 lbs.
- ▶ **CYCLE TIME**
Standard ~4 seconds
Extended ~9 seconds
- ▶ **POWER**
18V Advanced Lithium-ion 2.5 Ah Battery
- ▶ **OPERATING TEMPERATURE RANGE**
15° F to 122° F (-10° C to 50° C)
- ▶ **LIGHTING**
LED light for low or no-light environment
- ▶ **270° BARREL/JAW SWIVEL**

STANDARD PRESS TOOL APPLICATIONS (*COMPATIBLE WITH RP 342-XL)

<p>STANDARD JAWS FOR PUREFLOW[®]</p>  <p>Page 20</p>	<p>STANDARD JAWS AND TIGHT ACCESS RINGS FOR PROGRESS[®]</p>  <p>Pages 20 & 21</p>	<p>RINGS FOR PROGRESS XL-C[®]</p>  <p>Page 22</p>	<p>STANDARD JAWS AND TIGHT ACCESS RINGS FOR MEGAPRESS[®]</p>  <p>Page 23</p>	<p>STRUTSLAYR[®] STRUT SHEAR HEAD</p>  <p>Page 26</p>	<p>PRESS SNAP[®] SOIL PIPE CUTTER</p>  <p>Page 27</p>	<p>VIEGA Z3 ACTUATOR FOR RP 342-XL</p>  <p>Page 24</p>
--	--	--	---	---	--	--

PRESS BOOSTER

CAPACITY: 2½" TO 4" CARBON STEEL

**FOR USE WITH MEGAPRESS® FITTINGS
 AND WITH RIDGID® STANDARD PRESS TOOLS
 (RP 350, RP 351, RP 340, RP 330)**

Increase the output of your RIDGID Standard Press Tool with the Press Booster. Designed for efficiency and versatility, this tool connects carbon steel pipe up to 4" in less than 25 seconds.

CATALOG NO.	DESCRIPTION	WEIGHT LB.
60658	Press Booster for MegaPress XL®	21.6

Kits

CATALOG NO.	DESCRIPTION	WEIGHT LB.
60638	2½" - 4" Rings for MegaPress XL Kit with Press Booster	52.5
66868	2½" - 4" Rings for MegaPress XL Kit with Case	29.4

Rings

CATALOG NO.	DESCRIPTION	WEIGHT LB.
60643	2½" Ring for MegaPress XL	5.9
60648	3" Ring for MegaPress XL	7.1
60653	4" Ring for MegaPress XL	9.9

Actuator

CATALOG NO.	DESCRIPTION	WEIGHT LB.
67818	Z3 MegaPress Actuator	15.7

Accessories

CATALOG NO.	DESCRIPTION	WEIGHT LB.
60663	Press Booster Carrying Case	21.6
66863	Case for 2½" - 4" Rings	6.4



MEGAPRESS RINGS FOR RP 342-XL AND PRESS BOOSTER

**4" RING FOR
 MEGAPRESS XL**



Cat. #60653

**3" RING FOR
 MEGAPRESS XL**



Cat. #60648

**2½" RING FOR
 MEGAPRESS XL**



Cat. #60643

PRESSING
STANDARD PRESS
TOOL APPLICATIONS

STRUTSLAYR®

STRUT SHEAR HEAD

CUTTING CAPACITY UP TO 12-GAUGE MILD STEEL STRUT CHANNEL ON 1 5/8" x 1 5/8" AND 1 5/8" x 1 3/16"

STRUTSLAYR® delivers a fab shop quality cut in the field in five seconds or less. A built-in measuring guide and powerful shear ensure a precise cut and reduce the need for filing. A spark-free cutting plane keeps jobsites safer and cleaner, while a compact design makes for easy transport to and from jobsites.



**BURR-FREE
IN 5 SECONDS**



**NO FILING
NECESSARY**



**MOBILE
STRUT CUTTER**



**SPARK-FREE
CUTTING PLANE**



**BUILT-IN
MEASURING GUIDE**

Kits

CATALOG NO.	DESCRIPTION	WEIGHT LB.
64053	Kit, Head+Case+1 3/16" Die	19.8
64058	Kit, Head+Case+1 5/8" Die	19.8

Accessories

CATALOG NO.	DESCRIPTION	WEIGHT LB.
64033	Die Shear - 1 3/16"	2.9
64038	Die Shear - 1 5/8"	2.9
64048	STRUTSLAYR Carrying Case	6.5
64118	STRUTSLAYR Head	10.5



PRESS SNAP[®] SOIL PIPE CUTTER

**CAPACITY: CUTS 1½" TO 4" NO HUB
AND SERVICE WEIGHT SOIL PIPE**

The Press Snap Soil Pipe Cutter adds even more versatility to your standard press tool by delivering efficient cuts on cast iron soil pipe in seconds. This tool eliminates the need to score pipe, while no lengthy lever arms makes for easy access. Compatible with all RIDGID[®] Standard press tools, the Press Snap Soil Pipe Cutter makes cutting cast iron soil pipe a snap.

CATALOG NO.	DESCRIPTION	WEIGHT LB.
34403R	Press Snap Soil Pipe Cutter Kit	12.0
34678	Press Snap Soil Pipe Cutter Case	3.4



PRESSING
MANUAL PRESS TOOLS

MANUAL PRESS TOOLS

CAPACITY: ½" TO 1"

- ▶ Available sizes: ½", ¾", 1" and ½" and ¾" combo tool
- ▶ Easily adjustable lock screw for tool calibration
- ▶ All tools come standard with a go/no-go gauge

ASTM F 1807 Traditional PEX Crimp Tool



ASTM F 1807 Close Quarters PEX Crimp Tool

CATALOG NO.	DESCRIPTION	WEIGHT LB.
23448	½" PEX Crimp Tool	2.9
23458	¾" PEX Crimp Tool	2.9
23463	1" PEX Crimp Tool	3.0
23468	½" and ¾" PEX Combo Tool	3.5
43853	½" PEX Close Quarters Crimp Tool	2.1
43858	¾" PEX Close Quarters Crimp Tool	2.3

Accessories

CATALOG NO.	DESCRIPTION	WEIGHT LB.
29583	¾" - 1" ASTM F 1807 Gauge	1.0

LESS FORCE

33% less force required compared to traditional PEX crimp tools.

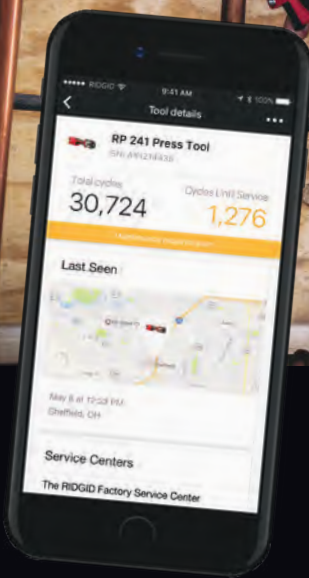
LIGHTER WEIGHT

Glass-filled polycarbonate handles make the tool 20% lighter than traditional PEX crimp tools.

ALL DAY COMFORT

E³® (Expert Engineered Ergonomics) handles provide increased feel and usability.

RIDGID LINK™
DOWNLOAD THE APP AND GET CONNECTED.



SMARTER TOOLS WITH THE RIDGID LINK APP.
Track tool data and maximize jobsite performance.



COUNT

- Track tool usage with smart cycle counter

SERVICE

- Know how many crimps until service
- Use location to find a RIDGID® service center near you

BATTERY

- App shows real-time battery life

LOCATE

- See the location of where your RIDGID Link enabled tool was last seen

SUPPORT

- Easily find operator's manuals, videos and more

HOW TO GET STARTED:

1. Download the RIDGID Link app from Apple Store or Google Play.
2. Open the app and sign in using your RIDGID.com credentials or create a new account.
3. Follow on-screen instructions to register your tool.



Contact Information: 888.743.4333 | RIDGID.com

RIDGID

