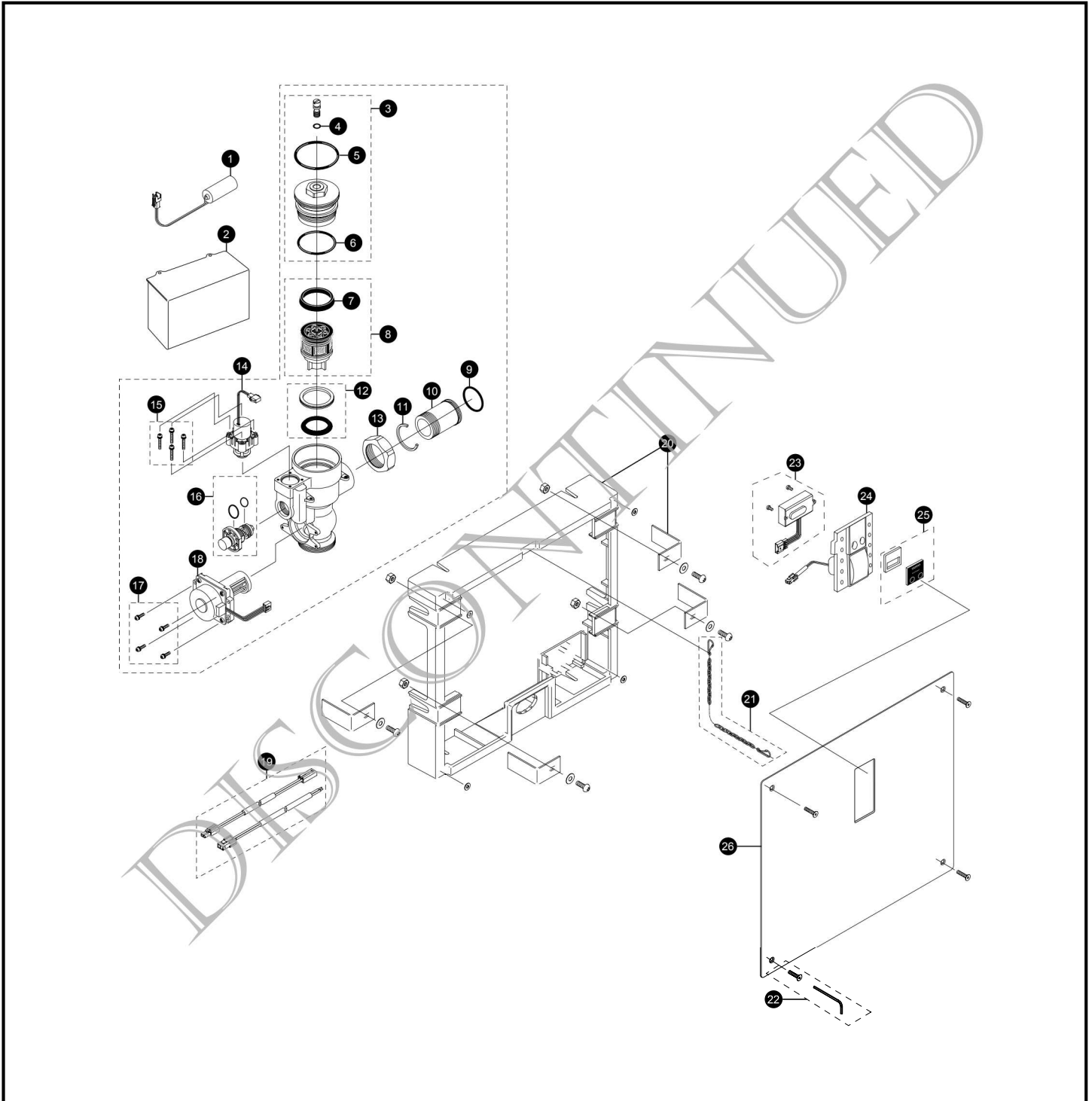


TEU2GN#SS Series

TEU2GN11#SS
TEU2GN21#SS
TEU2GN#SS

EcoPower® Sensor Urinal Flush Valve Concealed (14" x 12") - 1.0 Gpf Hydro-Power Charge



TEU2GN#SS Series

TEU2GN11#SS
TEU2GN21#SS
TEU2GN#SS

EcoPower® Sensor Urinal Flush Valve Concealed (14" x 12") - 1.0 Gpf Hydro-Power Charge

Item	Part	Description	Item	Part	Description
1	THP3053	Back-Up Battery	Vacuum Breaker Sets		
2	TH559EDV549	Urinal Valve Controller	VB13RB-11		Concealed - Back Spud (3/4" Outlet)
3	TH559EDV508	Valve Cap Assy (Urinal 1.0/0.5 GPF)	VB13RB-21		Concealed - Back Spud (1-1/4" Outlet)
4	TH305SV111	O-Rings (Cap Screw) (10 Pieces)	Note: For additional information, refer to the individual vacuum breaker parts sheets.		
5	TH305SV120	O-Rings (Valve Cap) (10 Pieces)			
6	TH305SV112	O-Rings (Valve Guide) (10 Pieces)			
7	TH305SV103	U-Packing (For Piston) (10 Pieces)			
8	TH323V104R	Piston Assembly (1.0/0.5 GPF)			
9	TH305SV106	O-Rings (Tail Piece) (10 Piece)			
10	TH305SV114	Tail Piece			
11	TH305SV105	Locking Rings (10 Piece)			
12	TH321	Seal Washer Kit			
13	TH305SV113	Nut			
14	TH559EDV510	Solenoid Unit & Diaphragm Assy			
15	TH559EDV301	Double Sems Screws M3 (4 Pieces)			
16	TH559EDV558	Manual Flushing Button			
17	TH559EDV505	Double Sems Screws M3 (4 Pieces)			
18	TH559EDV504	Hydro-Power Generator (Urinal)			
19	TH559EDV556	Extension Wire Set			
20	TH559EDV341	Wall Frame			
21	TH559EDV345	Chain Set			
22	8HU5019	4 Vandal Resist Screws With Wrench			
23	TH559EDV550	Sensor Controller & Screws Set			
24	TH559EDV552	Touch Button Assembly Unit			
25	TH559EDV553	Cover Glass			
26	TH559EDV554	Big Cover Plate			

Product Number Explanations

Flush Valve

(T) Fitting
(E) Electronic
(U) Urinal 1.0
(2) Concealed Large Plate
(G) Dynamo (Hydro Generator)
(N) Neutral Rough-In
(11) 3/4" Outlet Back Spud
(21) 1-1/4" Outlet Back Spud
(#SS) Stainless Finish