

VOLA 100, 100X, 200, 200V, 300
 VOLA 400DV, 400, 400V, 400N, 400NV, 400T
 VOLA 400TV, 400F, 400FV, 400R, 400RV
 VOLA 2100, 2100X, 2200, 2200V, 2300, 2400
 VOLA 2400V, 2400N, 2400NV, 2400T, 2400TV
 VOLA 2400F, 2400FV, 2400R, 2400RV

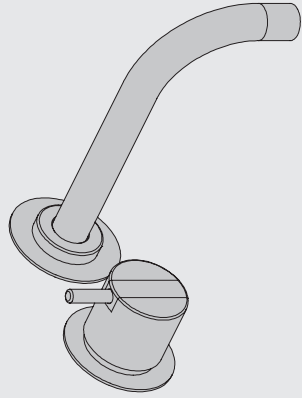
Fitting instruction Monteringsvægledning
 Montageanleitung Montage hanledning
 Monteringsvejledning Manuel de montage



04/00029

04/00031

04/00055



www.vola.com

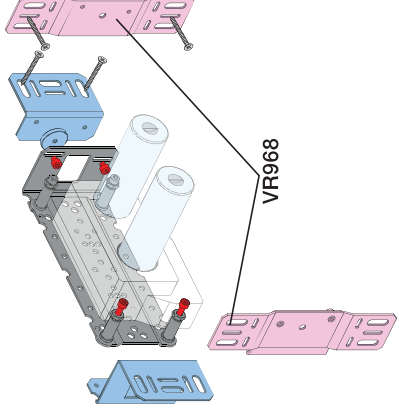
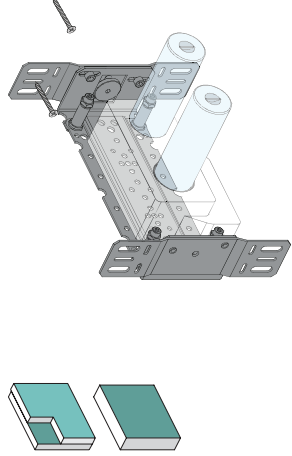
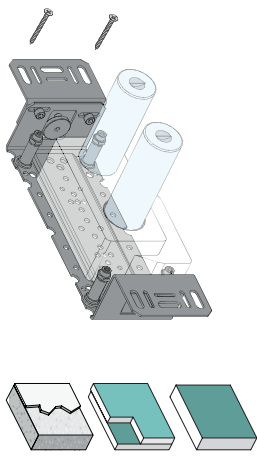
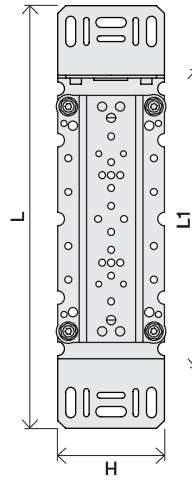
100-2100_V3_40998502

02-01-2025



5 705230 286211

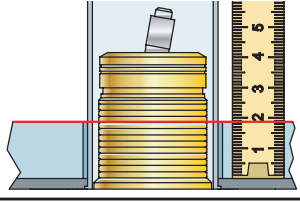
	L	L1	L2	H	H1	D
100, 100X, 200V, 300, 400V, 400DV 2100, 2100X, 2200V, 2300, 2400V	377 mm 14 3/4"	260 mm 10"	268 mm 10 1/2"	95 mm 3 3/4"	186 mm 7 3/8"	70 mm 2 3/4"
	475 mm 18 3/4"	355 mm 14"	367 mm 14 1/2"			
	552 mm 21 3/4"	435 mm 17"	447 mm 17 5/8"			



VR968:
 To be ordered separately.
 Werden separat bestellt.
 Bestilles separat.
 Apart te bestellen.
 À commander séparément.

Extension
 Verlängerung
 Verlängerdele
 Förlängning
 Aanpassing
 Modification

T Min. 3 mm
 Max 65 mm



T	Y
3 - 15 mm	110 - 98 mm
15 - 25 mm	98 - 88 mm
25 - 35 mm	88 - 78 mm
35 - 45 mm	78 - 68 mm
45 - 55 mm	68 - 58 mm
55 - 65 mm	58 - 48 mm

Data, 3 Bar/43.5 Psi:

	l/min.	Gal/min.
100:	18,3	4,8
400V:	15,6	4,1
2100:	26,2	6,7
2400V:	22,2	5,9

Max. 65°C, 150°F

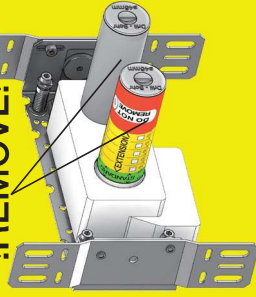
Max.: 10 Bar/145 psi

A

B

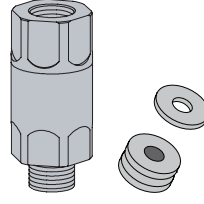
Check the local legislation.
 Bitte die örtlichen Vorschriften überprüfen.
 Tjek de lokale regler.
 Kontrollera den lokala lagstiftning.
 Verifieer de lokale regelgeving.
 Vérifiez la législation locale.

!DO NOT!
 !REMOVE!



C

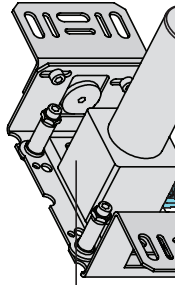
DE: Bitte separat beiliegende Anleitung für die Schalldämpfer VR1249 beachten



DE: Bitte separat beiliegende Anleitung für die Schallentkopplung VR972 beachten

D

Box till inbyggnadsblandare.
 Boks til indbyggningsblandere.
 Laatikko seinäasetteiselle sekoittajalle.
 Ingår inte i leveransen, köps separat.



200M

Fitting of extension
 Montage von verlängerung
 Monterig af forlængerdele

VR1260+

